

Installation Instructions



4000-3S Point-Row Option 2005+

Used with:

- 4000-3S



When you see this symbol, the subsequent instructions and warnings are serious - follow without exception. Your life and the lives of others depend on it!

General Information

These instructions explain how to install the Point-Row Option. The point-row option allows you to raise and lower openers on each drill section independently.

These instructions apply to:

195-306A 4000-3S Point Row Assy. 2005

Instructions apply to 3S-4000 drills built after January 1, 2005, for S/N YY1311+. These are start of in-line filters on each pressure reducing valve.

Definitions

Right-hand and left-hand as used in this manual are determined by facing the direction the drill will travel while in use.

Manual Information

Refer to the 4000-3S operator's manual for detailed information on safely operating, adjusting, troubleshooting and maintaining the Point-Row Option. Refer to the parts manual for part identification.

195-242M	4000-3S Operator's Manual
195-242P	4000-3S Parts Manual

Before You Start

Pages 8 and 9 are a detailed listing of parts included in the Point-Row Option package. Use this list to inventory parts received.

Assembly Instructions

Hydraulic Assembly

Refer to Figure 1

1. Unscrew hoses from tee fittings (1) on mounting bracket. Remove and discard tee fittings.

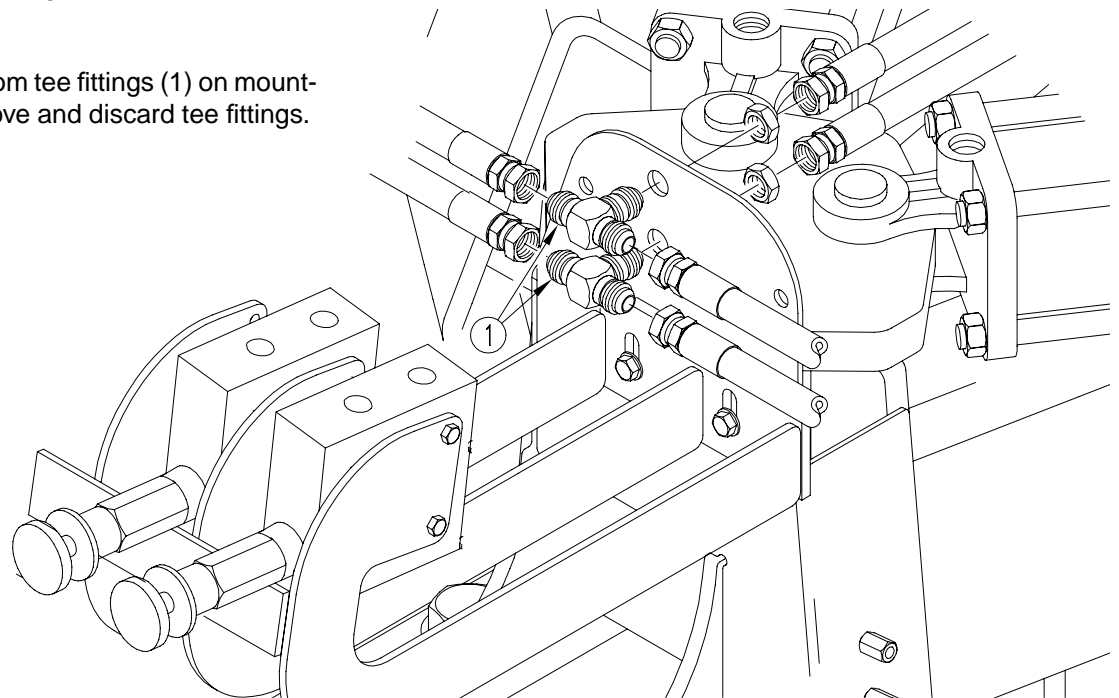
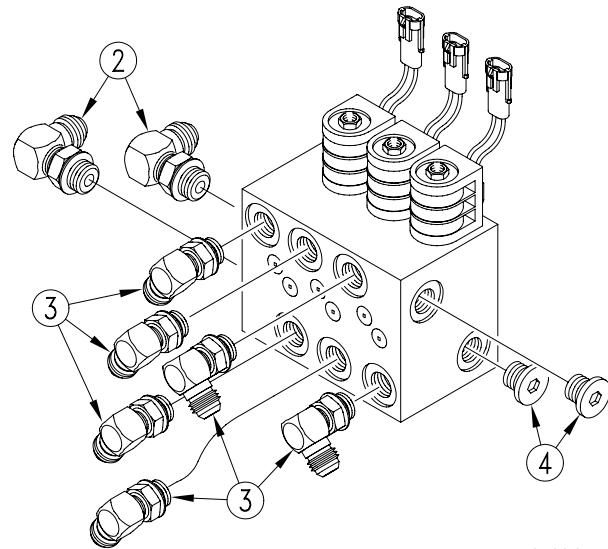


Figure 1

17083

Refer to Figure 2

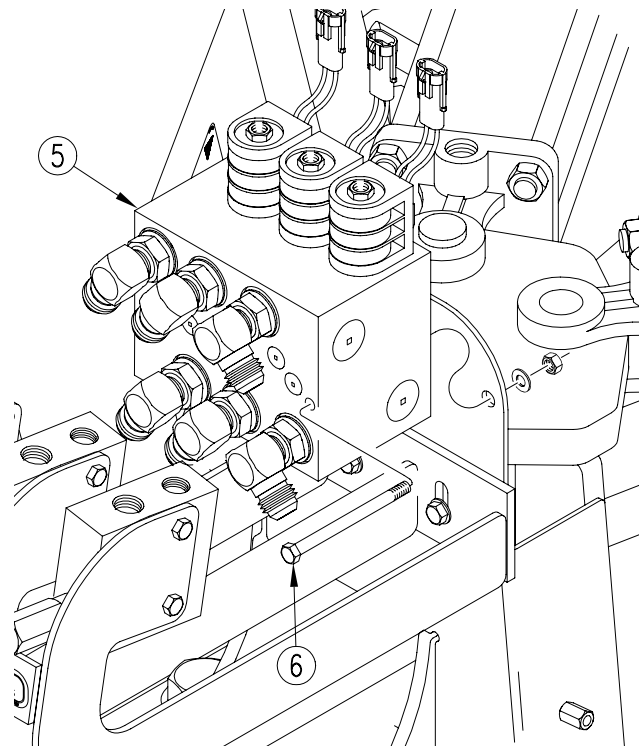
2. Pre-assemble fittings in block. Assemble the 3/4" elbows (2) in the side ports as shown. Assemble 9/16" elbows (3) in the ports in the front of the block. Assemble 3/4" plugs (4) in side ports as shown.



17084

Figure 2*Refer to Figure 3*

3. Mount block (5) on mounting bracket using 3/8" x 3 3/4" bolts (6), washers and locks nuts.



17085

Figure 3

Refer to Figure 4

4. Mount the new pressure-control valve (9) on the mounting bracket using 1/4" x 2 1/4" bolts (10), flat washers, lock washers and nuts. Place the new decals (11) under the pressure-control valves.

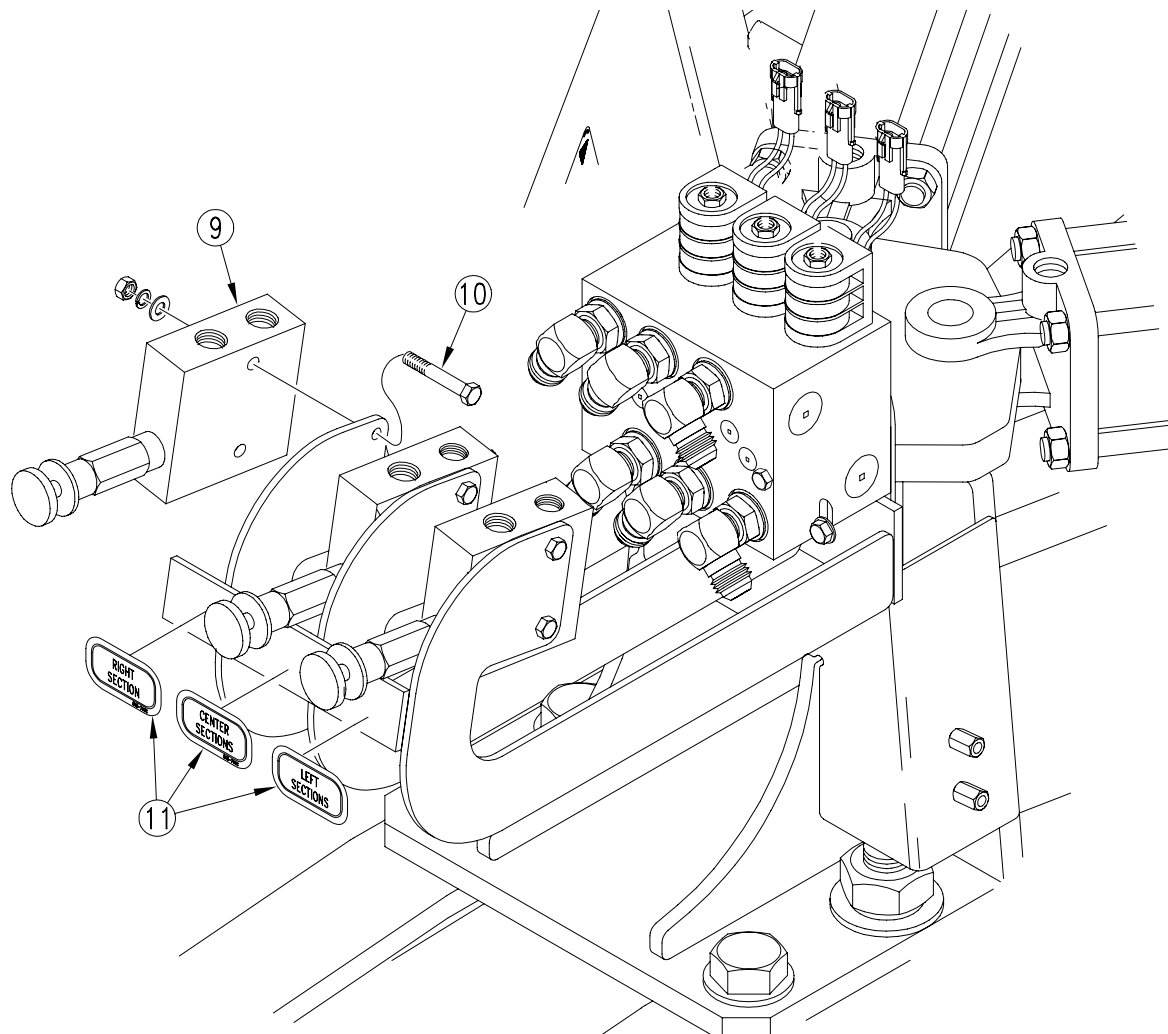
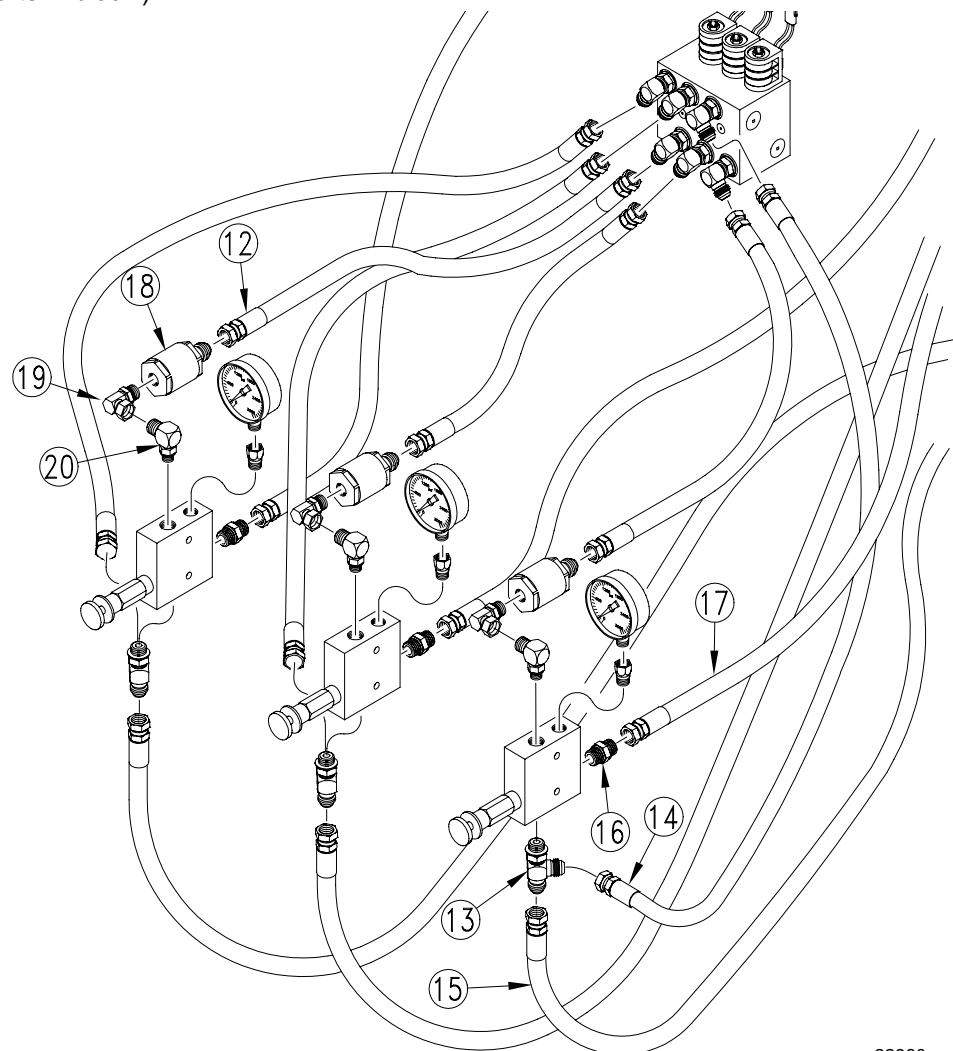


Figure 4

17086

Refer to Figure 5

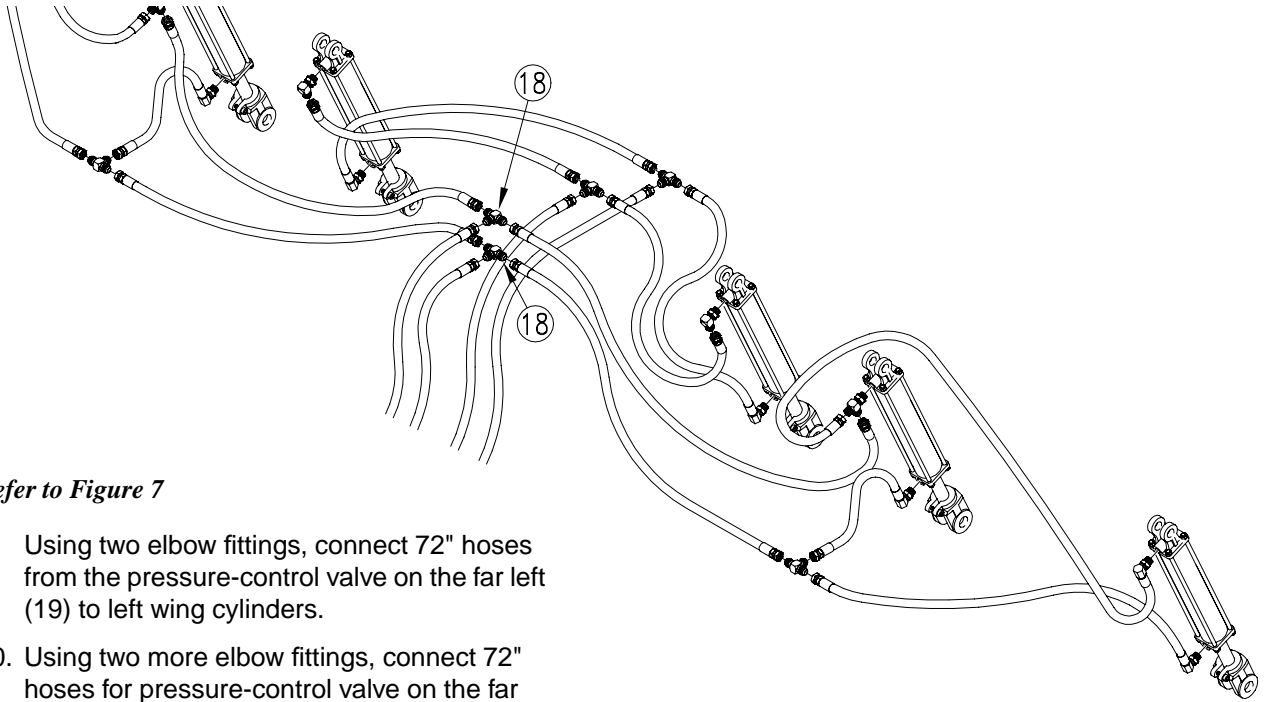
5. Assemble new 20" hose (12) to filters connected to top-front port on new pressure control valve. Using tee fitting (13), assemble new 18" hose (14) and one new 72" hose (15) to bottom port. Using adaptor fitting (16), assemble remaining 72" hose (17) to rear port.
6. Route 72" hoses (15 and 17) from new pressure control valves back along top of drill frame.
7. Connect short hoses to new block. Connect 21" hoses to lower-front ports in block. Connect 18" hoses to top-front ports in block. Connect hoses to block in same order as valves. (For example, connect hoses from center valve to center ports in block.)

**Figure 5**

22960

Refer to Figure 6

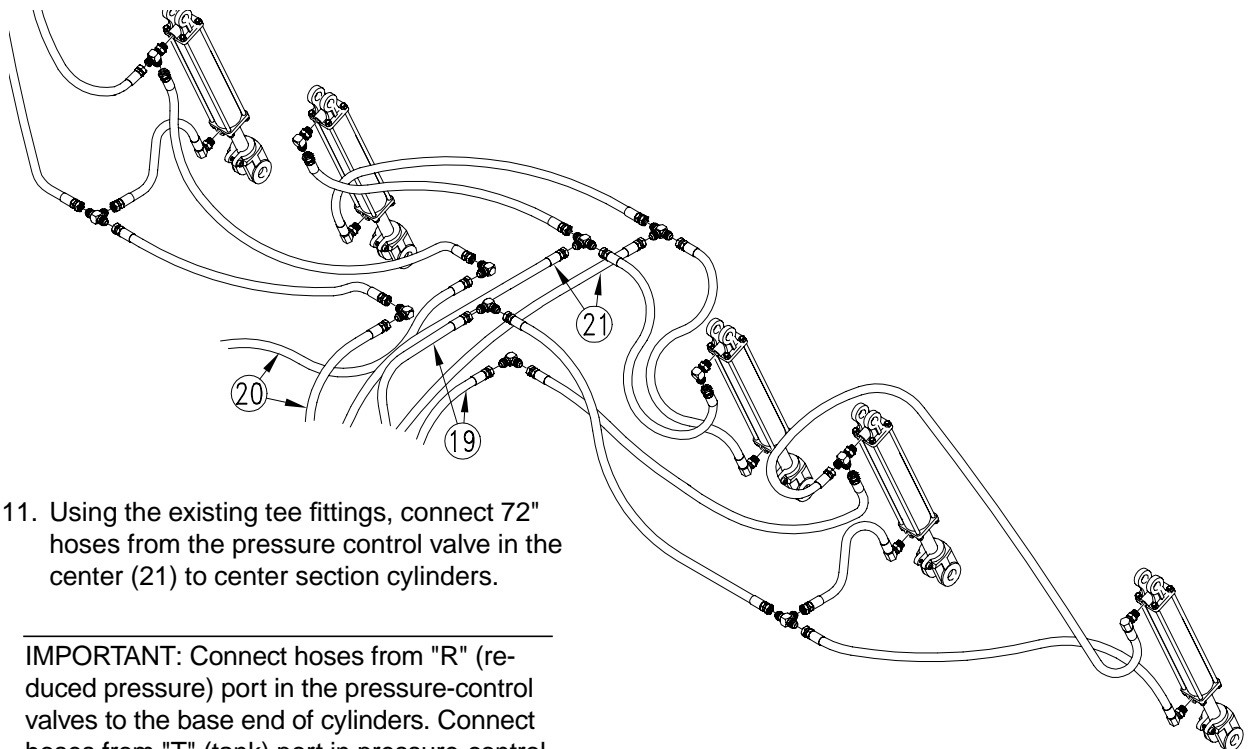
8. At the drill frame, remove the tee fittings (18) in the wing hydraulic circuit.

*Refer to Figure 7*

9. Using two elbow fittings, connect 72" hoses from the pressure-control valve on the far left (19) to left wing cylinders.
10. Using two more elbow fittings, connect 72" hoses for pressure-control valve on the far right to right wing cylinders (20).

Figure 6

17088



11. Using the existing tee fittings, connect 72" hoses from the pressure control valve in the center (21) to center section cylinders.

IMPORTANT: Connect hoses from "R" (reduced pressure) port in the pressure-control valves to the base end of cylinders. Connect hoses from "T" (tank) port in pressure-control valves to rod end of cylinders.

Figure 7

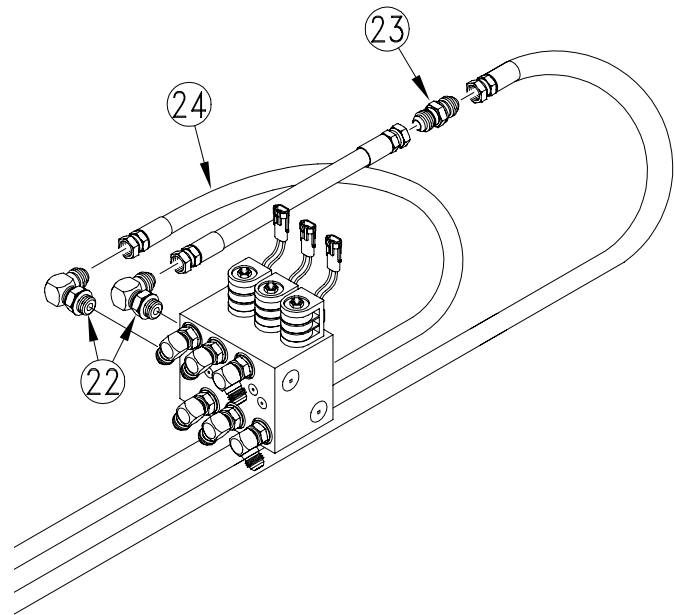
17089

Refer to Figure 8

12. Connect hoses from tractor outlets to the elbow fittings (22) in the side of the block as follows.

Connect hose from male-male adaptor fitting (23) to V1 (upper elbow).

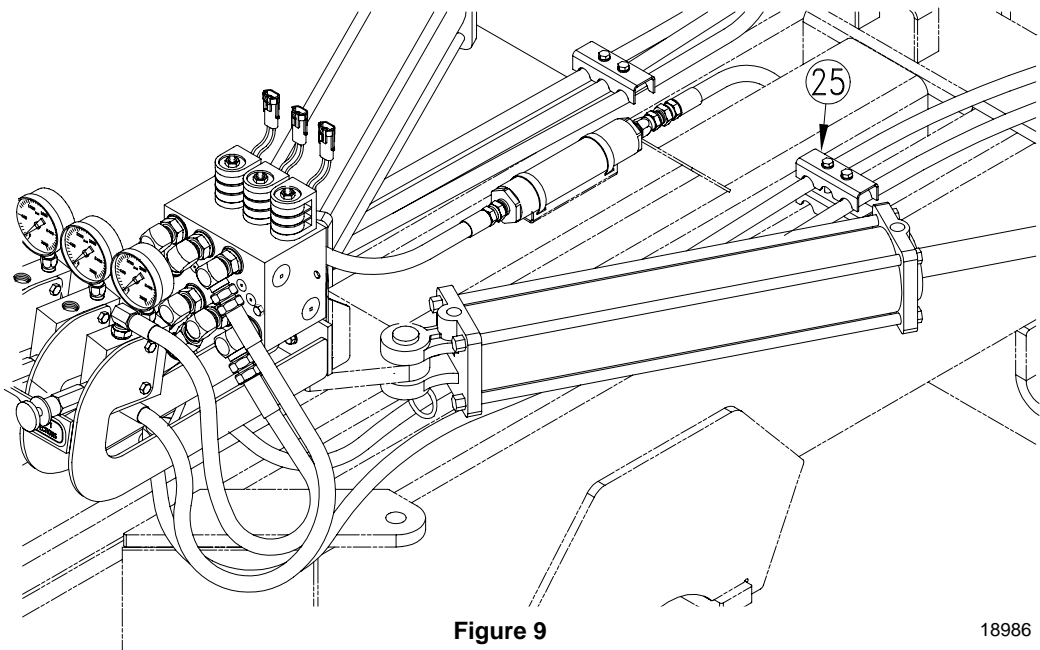
Connect hose from top rear port on bypass valve to V2 (lower elbow).

**Figure 8**

2291

Refer to Figure 9

13. Secure hydraulic hoses under hose clamps (25) on top of mainframe.

**Figure 9**

18986

Mount Control Box

Refer to Figure 10

1. Mount control box (1) in a convenient location in tractor cab. Plug harness extension (2) into control box. Connect control box to a 12-volt power source such as your tractor battery.

NOTE: Connect red wire to positive terminal and black wire to negative terminal.

2. Route wiring harness (3) through drill tongue.
3. Plug two-pin connectors (4) from wiring harness into coils on block. Look for letters L, C and R on leads to identify left, center and right.
4. Plug wiring-harness lead into control-box lead (5).
5. Secure wiring harness so it will not be damaged during lifting, folding, transporting or field turns.
6. If your tractor does not require a bypass valve to operate the 3000-3S, discard solenoid (6) provided in point-row kit. DO NOT COMPLETE THE FOLLOWING STEPS 7-12.
7. Install solenoid (6) into top port on bypass valve (8).

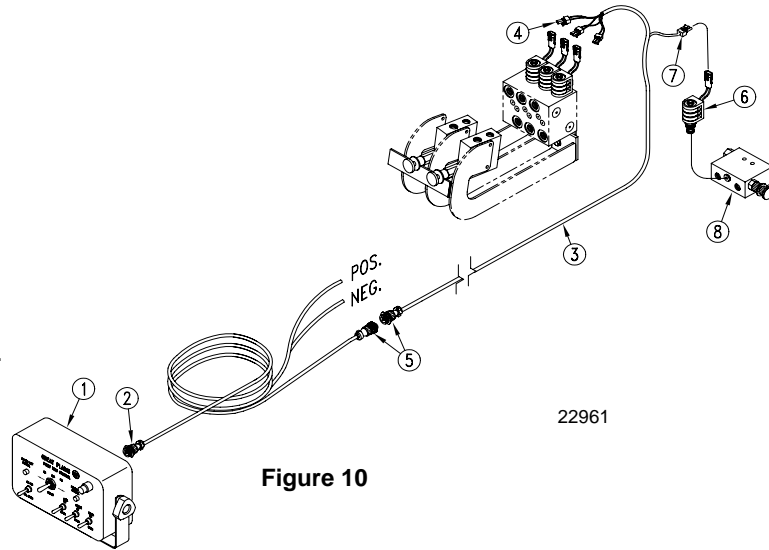


Figure 10

Refer to Figure 11

8. Remove the plug (3) on the bypass valve block (2) and discard. Install the solenoid valve (1) from the kit into this open port. Refer to the next step for special handling and tightening instructions.
9. The solenoid valve (1) needs to be tightened into the valve block (2) to seat the o-ring. A special thin wrench is required for this. If a special thin wrench is not available, do the following.
10. Carefully loosen the coil nut (4) on top of the solenoid (1). Remove the coil assembly (5). The hex (6) on the lower part of the valve is now exposed and a regular wrench may be used to tighten the valve into the block.
11. Reinstall the coil (5) and coil nut (4). Use great care to not over tighten this nut. Torque to 4-6 lb-ft.
12. Plug two-pin connector from monitor lead(s) marked with letter "S" into solenoid.

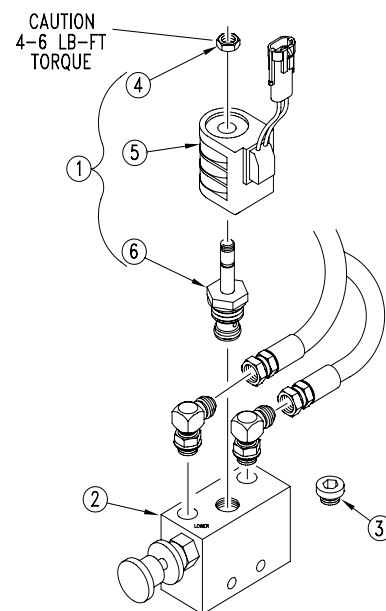


Figure 11

22971

8 Point-Row Option 2005+

195-306A 3S-4000 POINT ROW ACCESSORY 2005+

Qty.	Part No.	Part Description
1	195-308M	MANUAL 3S-4000 PT ROW 2005
6	800-082C	CABLE TIE .31X21.5 6DIA 12
2	802-026C	HHCS 3/8-16X3 3/4 GR5
2	802-551C	HHCS 1/4-20X2 1/4 GR5
2	803-006C	NUT HEX 1/4-20 PLT
4	803-014C	NUT HEX 3/8-16 PLT
5	804-006C	WASHER LOCK SPRING 1/4 PLT
4	804-013C	WASHER LOCK SPRING 3/8 PLT
2	804-075C	WASHER FLAT 1/4 USS PLT
1	810-300C	PRESSURE GAUGE 3000 PSI
1	810-301C	VALVE PRESS REDUCING W/CHE
1	810-371C	MANIFOLD ASY 3S-3000 POINT
1	810-408C	BYPASS CARTRIDGE AND SOLEN
1	810-554C	FILTER INLINE 3/4FORB 3/4M
1	811-064C	TE 9/16MJIC 9/16MJIC 9/1
6	811-065C	EL 9/16MJIC 9/16MORB
1	811-170C	AD 9/16MORB 9/16MJIC
2	811-171C	EL 3/4MORB 9/16MJIC
2	811-203C	PL 3/4MORB HOLLOW HEX
1	811-216C	EL 3/4MJIC 9/16MORB
1	811-286C	HH3/8R2 020 3/4FJIC 9/16FJ
4	811-393C	EL 9/16MJIC
1	811-631C	HH3/8R1 018 9/16FJIC
1	811-677C	AD 9/16MORB 1/4FNPT
2	811-774C	HH3/8R1 072 9/16FJIC
1	818-662C	DECAL RIGHT SECTION
1	818-663C	DECAL LEFT SECTION
1	818-664C	DECAL CENTER SECTION
1	823-175C	3 SECT POINT ROW WIRE HARN
1	823-185C	POINT ROW CONTROL BOX
1	823-190C	POINT ROW CABLE W/ POWER L
1	841-077C	EL 3/4FJIC 3/4MORB