

## Parts Manual

14 Gallon Poly Tank  
**High Volume Foam Marker**  
1995+

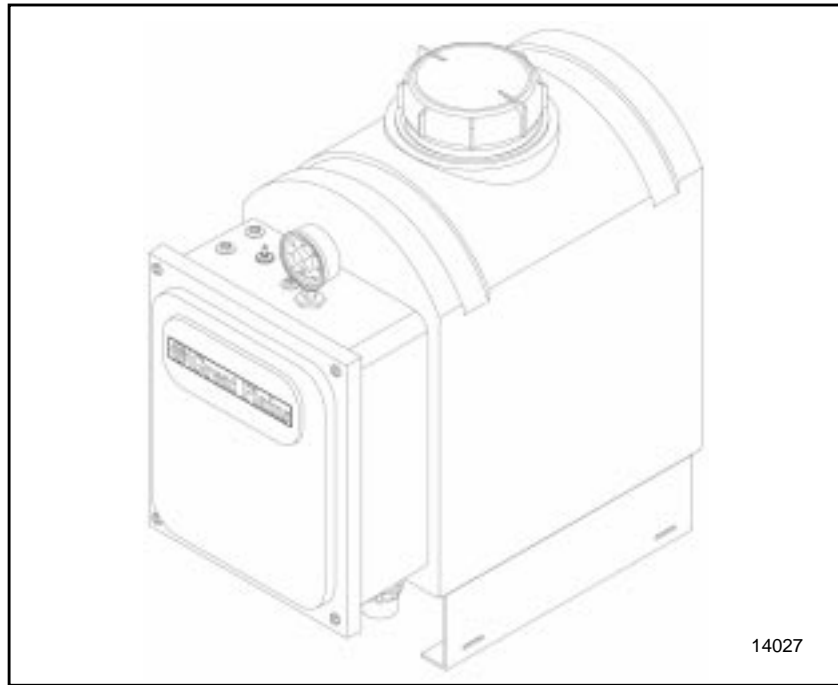
# Great Plains

Manufacturing, Inc.

P.O. Box 5060 • Salina, Kansas 67402-5060



Read the Operator's manual entirely. When you see this symbol, the subsequent instructions and warnings are serious - follow without exception. Your life and the lives of others depend on it!



14027

*Cover illustration may show optional equipment not supplied with standard unit.*

# Table of Contents

<b>Section 1 Introduction</b> . . . . .	<b>1-1</b>	3-Point Sprayer Foam Marker . . . . .	2-5
<b>General Information</b> . . . . .	<b>1-1</b>	Tractor Mount Sprayer Foam Marker . . . . .	2-7
Revisions . . . . .	1-1	Foam Marker Control Box Assembly . . . . .	2-9
Touch-up Paint and Manual Information . . . . .	1-1	Foam Marker Tank Assembly . . . . .	2-11
Replacement Hardware . . . . .	1-1	Foam Marker Control Toggle Switch Box Assembly (833-056C) . . . . .	2-13
Part Number Service Coding . . . . .	1-2	Foam Marker Boot Swivel Assembly . . . . .	2-15
Part Number Index . . . . .	1-3	CF600 Foam Marker Boot Swivel Assembly . . . . .	2-17
<b>Section 2 Foam Marker Assemblies</b> . . . . .	<b>2-1</b>		
Tandem Axle Sprayer Foam Marker . . . . .	2-1		
Trailer Sprayer Foam Marker . . . . .	2-3		

© Copyright 1998 All rights Reserved

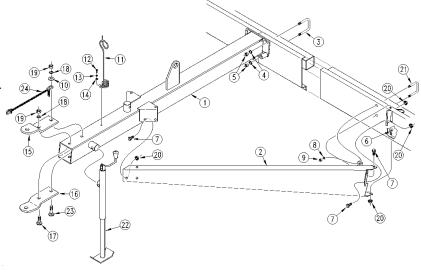
Great Plains Manufacturing, Inc. provides this publication "as is" without warranty of any kind, either expressed or implied. While every precaution has been taken in the preparation of this manual, Great Plains Manufacturing, Inc. assumes no responsibility for errors or omissions. Neither is any liability assumed for damages resulting from the use of the information contained herein. Great Plains Manufacturing, Inc. reserves the right to revise and improve its products as it sees fit. This publication describes the state of this product at the time of its publication, and may not reflect the product in the future. The illustrations in this manual are not intended for safe and proper assembly or disassembly of equipment. The illustrations are intended for ordering parts only.

Great Plains Manufacturing, Incorporated Trademarks

The following are trademarks of Great Plains Mfg., Inc.: Application Systems, Ausherman, Land Pride, Great Plains

All other brands and product names are trademarks or registered trademarks of their respective holders.

*Printed in the United States of America.*

Section Number & Description	Serial Number Break	Illustration Page	Parts Page
<p>Section 2 Frames  <b>Tongue &amp; Pull Bar (S/N 00000-)</b>                      Great Plains Mfg., Inc.</p> <p><b>Illustration Heading</b></p>  <p><b>Illustration</b></p> <p>10207</p> <p>2-1 EWD13 13' End Wheel Drill 175-083P 5/21/98</p> <p><b>Left Page Number</b></p> <p><b>Manual Name &amp; Number</b></p> <p><b>New or Modification Date</b></p>			<p>Great Plains Mfg., Inc. Section 2 Frames  <b>Tongue &amp; Pull Bar (S/N 00000-)</b></p> <p><b>Parts List</b></p> <ol style="list-style-type: none"> <li>1. 177-001H 13' END WHEEL TONGUE WELDMENT</li> <li>2. 177-004H PULL BAR WELDMENT LH</li> <li>2. 177-005H PULL BAR WELDMENT RH</li> <li>3. 806-032C U-BOLT 5/8-11 X 3 17/32 UNEVEN</li> <li>4. 804-022C WASHER LOCK SPRING 5/8 PLT</li> <li>5. 803-021C NUT HEX 5/8-11 PLT</li> <li>6. 802-183C RHSNB 1/2-13X1 GR5</li> <li>7. 802-083C HFSS 1/2-13X1 1/4 GR8</li> <li>8. 804-015C WASHER LOCK SPRING 1/2 PLT</li> <li>9. 803-020C NUT HEX 1/2-13 PLT</li> <li>10. 177-587D SAFETY CHAIN WASHER</li> <li>11. 807-023C SPRING HOSE LOOP</li> <li>12. 801-028C SCREW HEX 3/8-16X1 TYPE F</li> <li>13. 804-013C WASHER LOCK SPRING 3/8 PLT</li> <li>14. 804-012C WASHER FLAT 3/8 SAE PLT</li> <li>15. 177-009D CLEVIS HITCH TOP HALF</li> <li>16. 177-008D CLEVIS HITCH BOTTOM HALF</li> <li>17. 802-177C RHSNB 3/4-10X2 1/2 GR5</li> <li>18. 804-023C WASHER LOCK SPRING 3/4 PLT</li> <li>19. 803-027C NUT HEX 3/4-10 PLT</li> <li>20. 803-037C NUT HEX WHIZ 1/2-13 PLT</li> <li>21. 806-028C U-BOLT 1/2-13 X 3 17/32 X4 3/4</li> <li>22. 890-118C SCREW JACK 2000#</li> <li>23. 802-289C RHSNB 3/4-10X3 GR5</li> <li>24. 890-182C SAFETY CHAIN 10000 LB</li> </ol> <p>7/1/98 EWD13 13' End Wheel Drill 175-083P 2-2</p> <p><b>Right Page Number</b></p>

## General Information

### Revisions

Please refer to the date at the bottom of each page for the most current version of the equipment. Serial number breaks are at the top of the page at the end of the illustration heading, refer to the illustration above.

### Touch-up Paint and Manual Information

Repaint parts where paint is worn or scratched to prevent rust. Aerosol touch-up paint is available. To order use Great Plains part numbers below:

- GP Green . . . . .821-001C
- GP Black . . . . .821-002C
- GP Beige . . . . .821-003C
- GP Buckskin . . . . .821-004C
- LP Beige . . . . .821-011C
- LP Black . . . . .821-032C

Replacement manuals available. Use Great Plains part 500-088P.

### Replacement Hardware

All bolts and nuts are grade 5 unless otherwise noted. The use of improper grades of hardware can result in personal injury, damage to equipment, or loss of property. See **“Hardware Legend”** on page 1-2, for hardware abbreviations used within all parts lists.

## Hardware Legend

AR	As Required
BLADE	Blade Bolt
C	Cap Screw
CP	Cotter Pin
CPHSSS	Cup Point Hex Socket Set Screw
CPSHSS	Cup Point Square Head Set Screw
CPSQHSS	Cup Point Square Head Set Screw
CRFCHMS	Cross Recess Flat Countersunk Head Mach. Screw
CRPHMS	Cross Recess Pan Head Machine Screw
CRPHTFS	Cross Recess Pan Head Thread Forming
CRRHMS	Cross Recess Round Head Machine Screw
CRTHMS	Cross Recess Truss Head Machine Screw
CSNB	Countersunk Square Neck Bolt
FHMS	Flat Head Machine Screw
FTC	Full Thread Cap Screw
H	Hex Nut
HCLN	Hex Center Lock Nut
HFLCS	Hex Flange Lock Cap Screw
HFS	Hex Flange Screw
HFSLN	Hex Flange Serrated Lock Nut
HFSS	Hex Flange Serrated Screw
HHCS	Hex Head Cap Screw or Metric Bolt
HSBHCS	Hex Socket Button Head Cap Screw
HSFCHCS	Hex Socket Flat Countersunk Head Cap Screw
HSHCS	Hex Socket Head Cap Screw
HSSS	Hex Socket Head Screw
HTLN	Hex Top Lock Nut
HWHCS	Hex Washer Head Cap Screw

HWHMS	Hex Washer Head Machine Screw
HXBHCS	Hex Socket Button Head Cap Screw
J	Hex Jam Nut
JIC	37 Degree Tapered Thread
L	Helical Spring Lock Washer
LUG	Lug Bolt
NFC	National Fine Cap Screw
NPSM	National Pipe Straight Mechanical
NPTF	National Pipe Taper Fuel
P	Wide Plain Washer
PHMS	Pan Head Machine Screw
PLOW	Plow Bolt
RHMS	Round Head Machine Screw
RHSNB	Round Head Square Neck Bolt
SCREW LEVELING	Leveling Screw
SCREW THUMB	Thumb Screw
SCREW WELD	Weld Screw
SFCHMS	Slotted Flat Countersunk Head Machine Screw
SFHMS	Slotted Fillister Head Machine Screw
SP	Special
SP SCREW	Special Screw
SQHSS	Square Head Set Screw
SRHMS	Slotted Round Head Machine Screw
SSS	Socket Set Screw
STCS	Self Tapping Cap Screw
STHMS	Slotted Truss Head Machine Screw
WHEEL	Wheel Studs and Hub Long Bolts
WING	Wing Bolt

## Part Number Service Coding

Within the following parts lists some part numbers are coded for revisions and interchangeability.

### Legend:

Newest serial numbers are listed first.

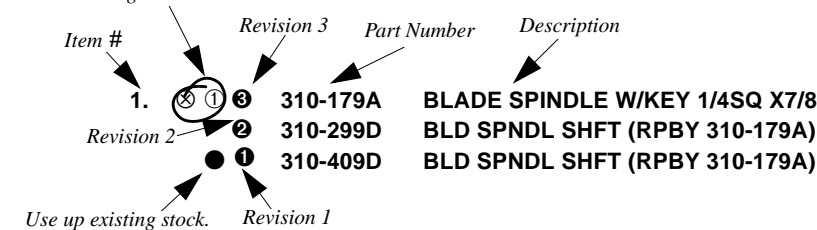
**Bold face type indicates parts that are serviced. These parts are considered interchangeable, if it supersedes another part, unless otherwise noted.**

### Example:

- (S/N 20001+) Includes serial numbers 20001 and above (to the newest numbers)
- (S/N 10001↔20000) Includes serial numbers between and including 10001 and 20000
- (S/N 10000-) Includes serial numbers 10000 and below (to the oldest number)

- ① First revision, e.g.; ② is 2nd revision, ③ is 3rd revision, etc.  
(Greater numbers are the newest.)
- The existing stock for this part should be used up before ordering the new part.
- ⊗ Not interchangeable
- ⊗①② Revision 2 is not interchangeable w/1

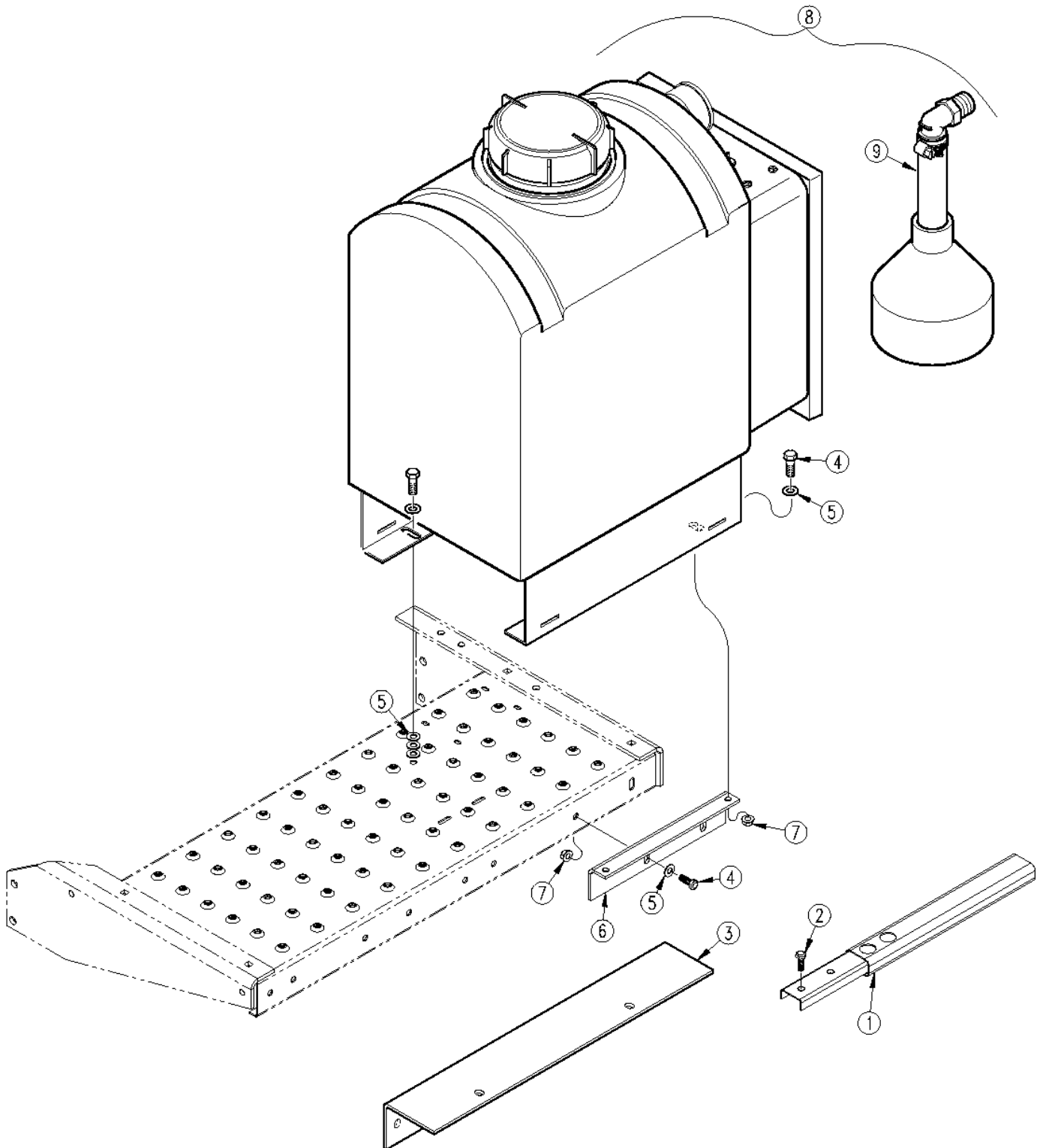
Not interchangeable with revision 1



**Part Number Index**

<u>Part Number</u>	<u>Page</u>	<u>Part Number</u>	<u>Page</u>	<u>Part Number</u>	<u>Page</u>	<u>Part Number</u>	<u>Page</u>
10437	2-12	830-071C	2-10				
60001	2-10	830-084C	2-16				
621102	2-10	830-111C	2-10				
627076	2-10	830-113C	2-10				
654831	2-10	830-123C	2-10				
10437-A	2-12	830-028C	2-18				
2000-134	2-10	830-084C	2-18				
2100-647	2-10	830-291C	2-18				
3350-0082A	2-12	831-006C	2-10				
3800-0047	2-12	833-056C	2-10				
4193A-PP2-100SS	2-10	833-057C	2-10				
502-081H	2-16	890-371C	2-2				
502-082H	2-16	890-371C	2-4				
502-083H	2-16	890-371C	2-6				
502-103H	2-2	890-371C	2-8				
502-142D	2-4	890-407C	2-2				
502-143D	2-4	890-407C	2-4				
502-144D	2-4	890-407C	2-6				
502-156D	2-2	890-407C	2-8				
502-157D	2-6	990-078R	2-16				
502-175D	2-2	990-081R	2-10				
506-182D	2-16	A-14S	2-10				
800-060C	2-16	AA120	2-16				
800-126C	2-10	AA120	2-18				
800-127C	2-10	AA120	2-2				
800-127C	2-16	AA120	2-4				
800-060C	2-18	AA120	2-6				
800-257C	2-18	AA120	2-8				
801-003C	2-10	AA122	2-10				
801-003C	2-14	AA124	2-10				
801-016C	2-10	AA269	2-10				
801-021C	2-10	AA330	2-10				
802-004C	2-10	AA358	2-10				
802-004C	2-12	AA366SS	2-12				
802-014C	2-2	AA425	2-10				
802-014C	2-6	AA427	2-10				
802-017C	2-2	AA485	2-10				
802-017C	2-4	CB-BKR25	2-14				
802-017C	2-8	CB-DPDT	2-14				
802-041C	2-16	CB-KNOB	2-10				
802-091C	2-4	CP4916-34	2-10				
803-006C	2-12	DEC-CB002	2-14				
803-007C	2-10	DEC-MK001	2-10				
803-008C	2-10	FO000	2-10				
803-068C	2-2	FO003	2-14				
803-068C	2-4	FO009	2-10				
803-068C	2-6	FO011	2-14				
803-068C	2-8	FU000	2-10				
803-169C	2-16	GF60	2-10				
803-193C	2-4	MKR-CHK14	2-10				
803-199C	2-16	MKR-RK415	2-10				
803-199C	2-18	SHU9439107	2-10				
804-006C	2-12	SHU9439506	2-10				
804-007C	2-10	SRF-50	2-14				
804-012C	2-2	SU56.112.2	2-10				
804-012C	2-4	TLS-6SL	2-12				
804-012C	2-6	TLS6SL	2-12				
804-012C	2-8	TP-3814	2-10				
804-017C	2-4	W21204	2-10				
804-046C	2-10						
804-075C	2-10						
804-075C	2-12						
804-088C	2-10						
806-094C	2-16						
806-138C	2-6						
806-107C	2-18						
829-002C	2-10						
830-021C	2-10						
830-049C	2-12						

*Tandem Axle Sprayer Foam Marker*



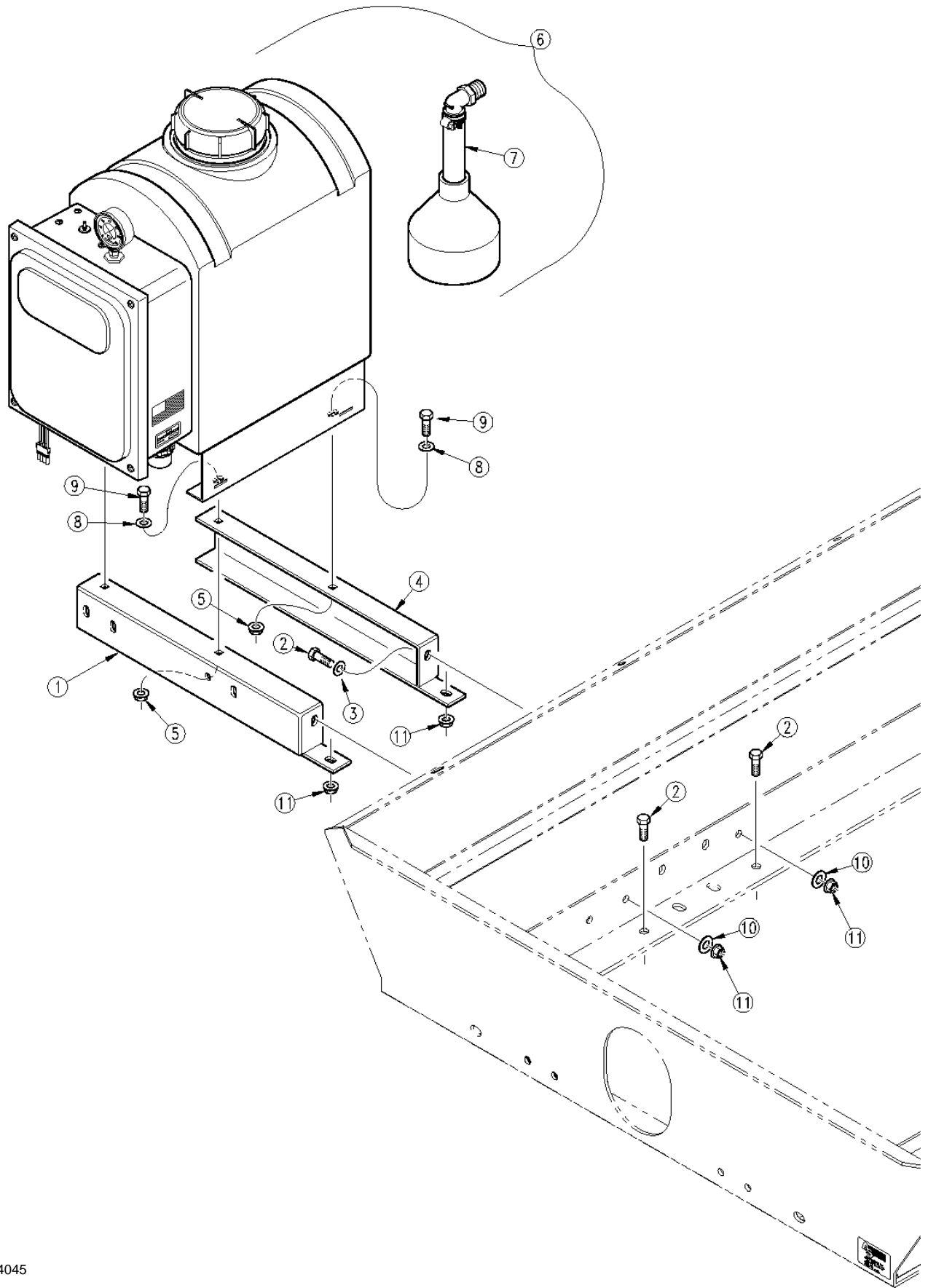
14737

**Tandem Axle Sprayer Foam Marker**

Ref.	Part No.	Part Description	Comments
1.	502-103H	FOAM BOOT BOOM EXTENSION	
2.	802-014C	HHCS 3/8-16X3/4 GR5	
3.	❶ 502-156D	<b>OBSOLETE REPLACED BY 502-175D</b>	S/N 3200- See item 6.
4.	802-017C	HHCS 3/8-16X1 GR5	
5.	804-012C	WASHER FLAT 3/8 SAE PLT	
6.	⊗ ❶ ❷ 502-175D	<b>ANGLE - TA FOAM MARKER MOUNT</b>	S/N 3201+
7.	803-068C	NUT HEX FLANGE 3/8-16 PLT	
8.	⊗ ❶ ❷ 890-407C	<b>FOAM MARKER - RHS MKR-5000D</b>	
	❶ 890-371C	<b>OBSOLETE REPLACED BY 890-407C</b>	
9.	AA120	RHS FOAM DROP ASSEMBLY	

**Legend:** ❶ = 1st revision; ❷ = 2nd revision; ❸ = 3rd revision; ● = use up existing stock; ⊗ = not interchangeable; ⊗ ❶ ❷ = for example: revision 2 is not interchangeable w/revision 1

**Trailer Sprayer Foam Marker**



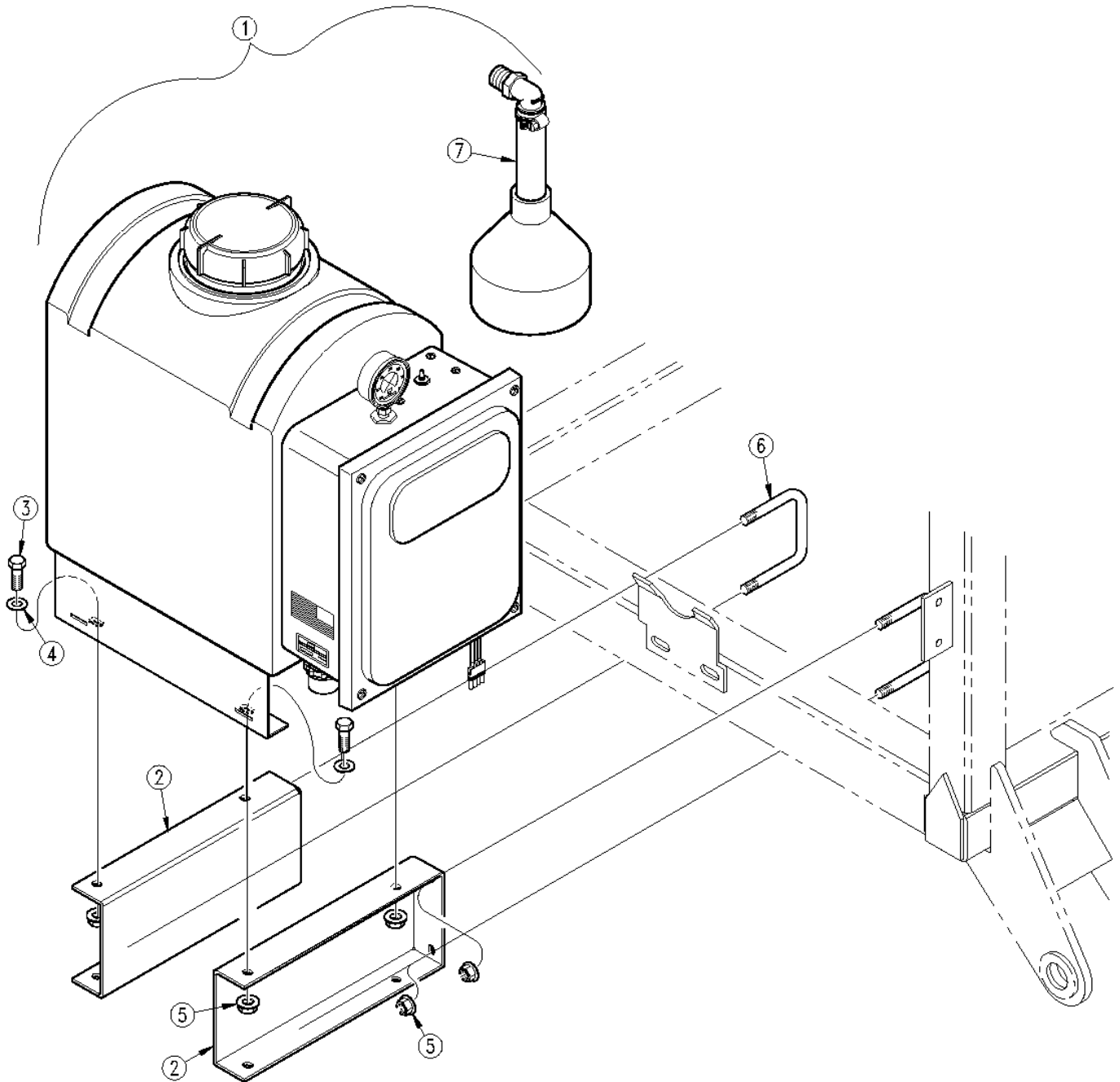
14045

**Trailer Sprayer Foam Marker**

Ref.	Part No.	Part Description	Comments
1.	502-144D	BRACKET - WALKBOARD SUPPORT RH	
2.	802-091C	HHCS 1/2-13X1 1/2 GR5	
3.	804-017C	WASHER FLAT 1/2 USS PLT	
4.	502-143D	BRACKET - WALKBOARD SUPPORT LH	
5.	803-068C	NUT HEX FLANGE 3/8-16 PLT	
6.	⊗ ① ② <b>890-407C</b>	<b>FOAM MARKER - RHS MKR-5000D</b>	
	① <b>890-371C</b>	<b>OBSOLETE REPLACED BY 890-407C</b>	
7.	AA120	RHS FOAM DROP ASSEMBLY	
8.	804-012C	WASHER FLAT 3/8 SAE PLT	
9.	802-017C	HHCS 3/8-16X1 GR5	
10.	502-142D	WASHER FLAT 17/32ID X 2 1/2OD	
11.	803-193C	NUT HEX FLANGE 1/2-13 GR G PLT	

**Legend:** ① = 1st revision; ② = 2nd revision; ③ = 3rd revision; ● = use up existing stock; ⊗ = not interchangeable; ⊗ ① ② = for example: revision 2 is not interchangeable w/revision 1

3-Point Sprayer Foam Marker



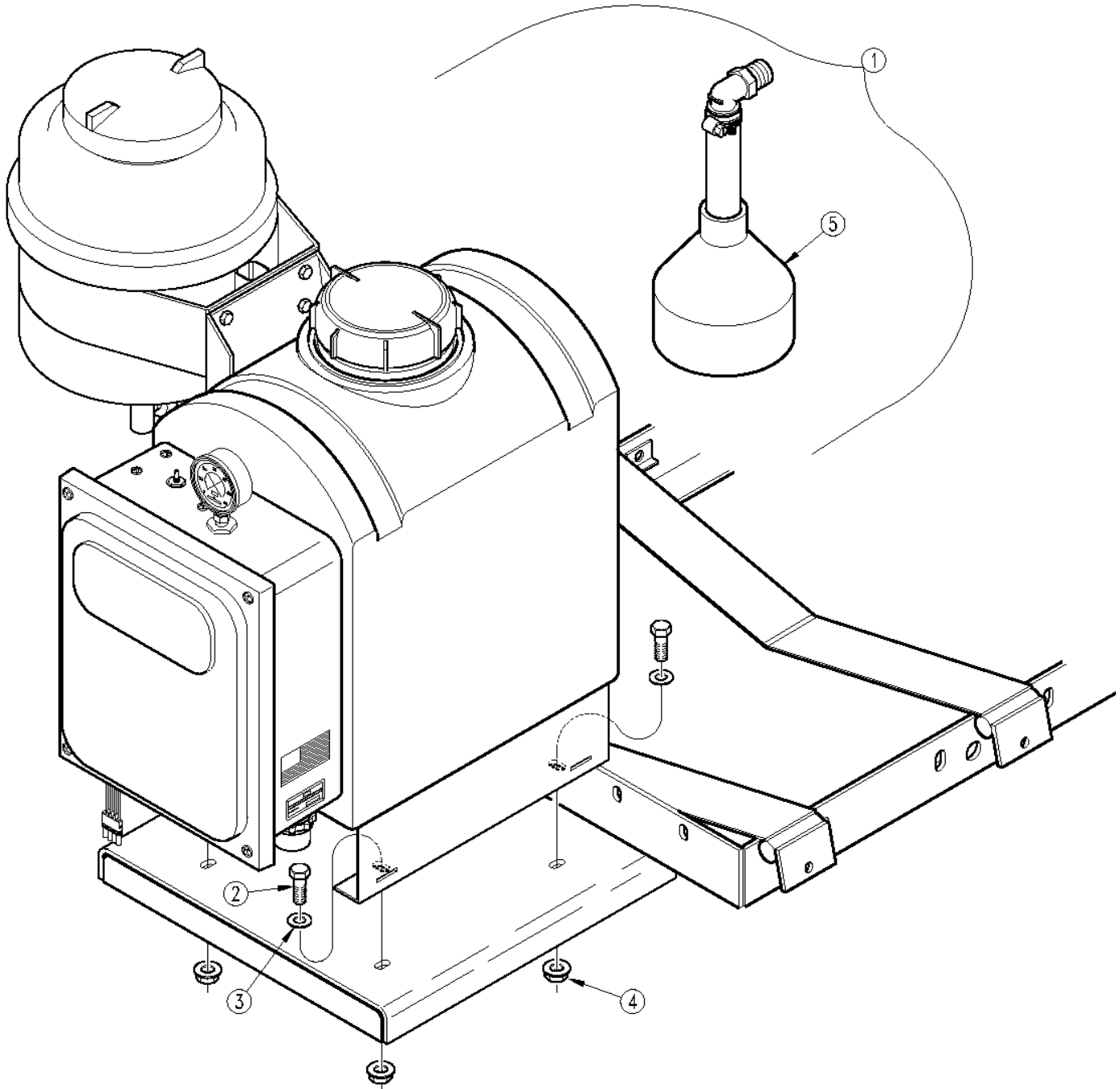
14735

**3-Point Sprayer Foam Marker**

Ref.	Part No.	Part Description	Comments
1.	⊗ ① ② 890-407C ① 890-371C	FOAM MARKER - RHS MKR-5000D OBSOLETE REPLACED BY 890-407C	
2.	502-157D	BRACKET - 3PT FOAM MARKER	
3.	802-014C	HHCS 3/8-16X3/4 GR5	
4.	804-012C	WASHER FLAT 3/8 SAE PLT	
5.	803-068C	NUT HEX FLANGE 3/8-16 PLT	
6.	806-138C	U-BOLT 3/8-16 X 4 1/32 X 3 3/4	
7.	AA120	RHS FOAM DROP ASSEMBLY	

**Legend:** ① = 1st revision; ② = 2nd revision; ③ = 3rd revision; ● = use up existing stock; ⊗ = not interchangeable; ⊗ ① ② = for example: revision 2 is not interchangeable w/revision 1

**Tractor Mount Sprayer Foam Marker**



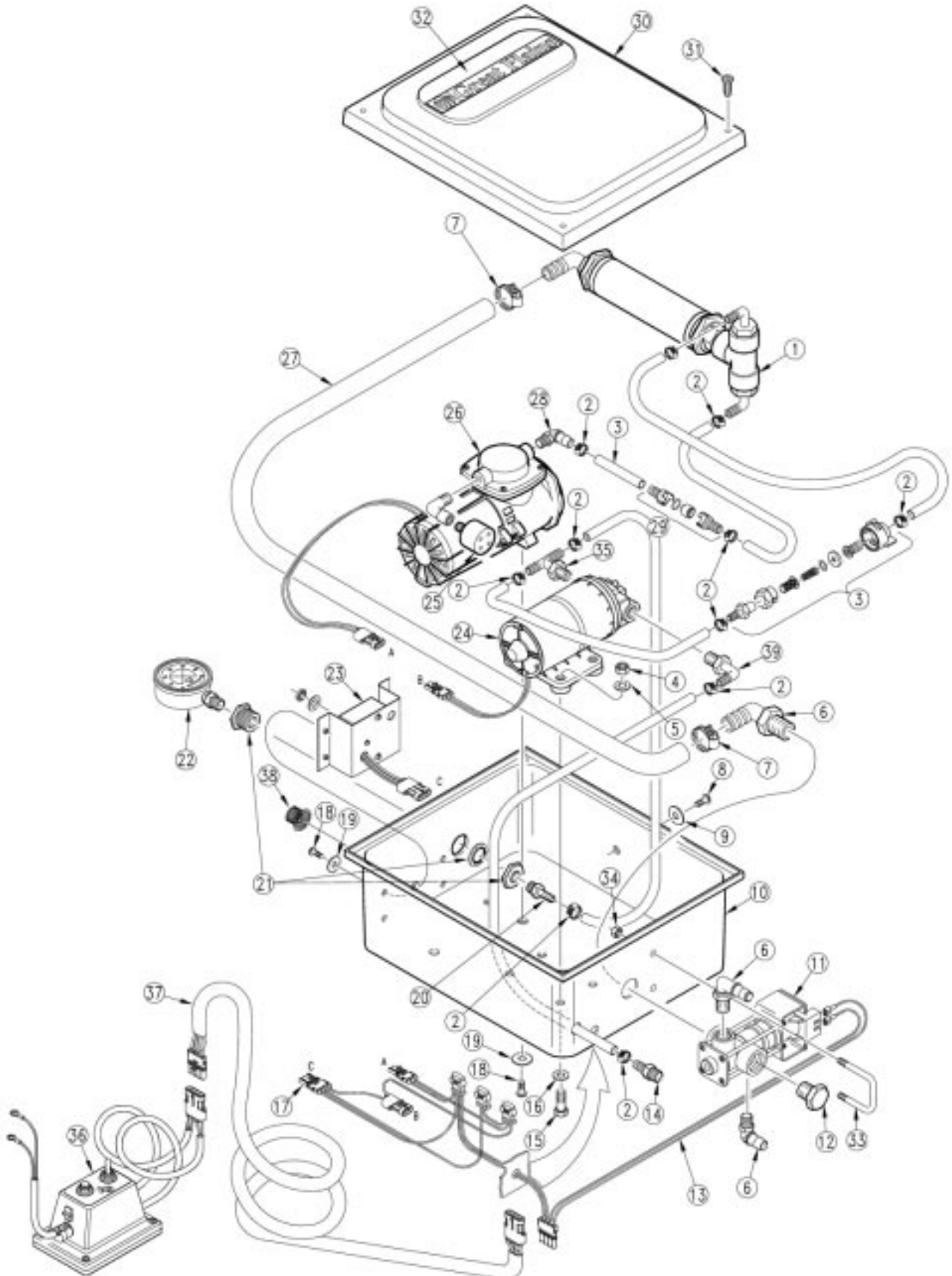
14733

**Tractor Mount Sprayer Foam Marker**

Ref.	Part No.	Part Description	Comments
1.	⊗ ① ② 890-407C ● 890-371C	FOAM MARKER - RHS MKR-5000D OBSOLETE REPLACED BY 890-407C	
2.	802-017C	HHCS 3/8-16X1 GR5	
3.	804-012C	WASHER FLAT 3/8 SAE PLT	
4.	803-068C	NUT HEX FLANGE 3/8-16 PLT	
5.	AA120	RHS FOAM DROP ASSEMBLY	

**Legend:** ● = 1st revision; ② = 2nd revision; ③ = 3rd revision; ● = use up existing stock; ⊗ = not interchangeable; ⊗ ① ② = for example: revision 2 is not interchangeable w/revision 1

Foam Marker Control Box Assembly



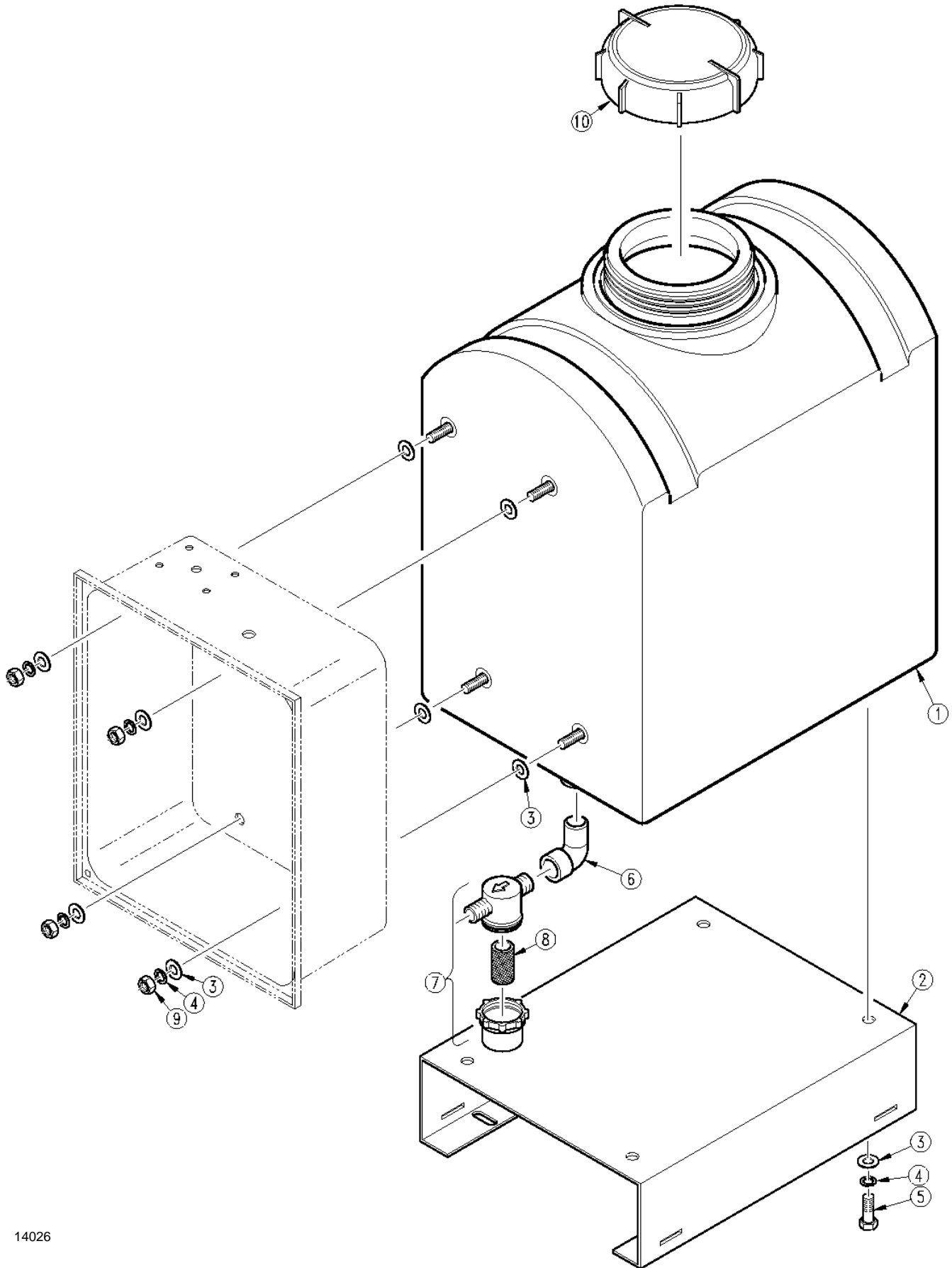
14020

**Foam Marker Control Box Assembly**

Ref.	Part No.	Part Description	Comments
1.	⊗ ① ② <b>AA425</b> ① <b>AA330</b>	<b>RHS FOAM TUBE ASSY MKR-5000C</b> <b>REPLACED AA425</b>	
2.	800-126C	CLAMP WRM DRV #5 SS (.44-.70)	
3.	AA358	RHS CHECK/STRAINER ASY MKR5000	
	Common parts for item 3:		
	CP4916-34	SSC ORIFICE PLATE -SS	Not shown.
	4193A-PP2-100SS	CHECK STRAINER 100 MESH	Not shown.
4.	803-007C	NUT LOCK 1/4-20 PLT	
5.	804-007C	WASHER FLAT 1/4 SAE PLT	
6.	830-123C	EL 3/4MNPT X 3/4HB POLYPROP	
7.	800-127C	CLAMP WRM DRV #12 SS(.56-1.25)	
8.	801-003C	SCREW RD HD SLT 10-24X1/2 PLT	
9.	804-046C	WASHER FLAT #10 SAE PLT	
10.	FO000	RHS FOAMER BOX POLYETHYLENE	
11.	829-002C	VALVE ELEC BYPASS 3 WAY	
12.	830-021C	PL 3/4MNPT POLYPROP	
13.	AA269	RHS POWER EXTENSION VALVE	
14.	830-071C	AD 1/4MNPT X 3/8HB POLYPROP	
15.	802-004C	HHCS 1/4-20X3/4 GR5	
16.	804-075C	WASHER FLAT 1/4 USS PLT	
17.	AA124	RHS WIRING ASSEMBLY, FOAMER	
18.	801-016C	SCREW RD HD 8-32 X 1/2 LG PLT	
19.	804-088C	WASHER FLAT #8 SAE PLT	
20.	A-14S	RHS BARB, STEEL 1/4MPT X 1/4HB	
21.	W21204	RHS BULKHEAD FITTING	
22.	GF60	RHS 60# GLYCERIN FILLED GAUGE	
23.	AA485	RHS MKR SPEED CONTROL	
24.	⊗ ② ③ <b>AA122</b> ⊗ ① ② <b>2100-647</b> ① <b>2000-134</b>	<b>LIQUID PUMP ASSEMBLY</b> <b>REPLACED BY AA122</b> <b>OBS &amp; REPLACED BY 2100-647</b>	
	Common parts for item 24 liquid pump:		
	SHU9439506	DIAPHRAGM KIT-SANTOPRENE	Not shown.
	SHU9439107	BYPASS VALVE KIT 60 PSI VITON	Not shown.
25.	831-006C	PUMP FILTER - DIAPHRAM AIR CMP	
	60001	AIR FILTER	
26.	⊗ ① ② <b>AA427</b> ① <b>FU000</b>	<b>RHS COMPRESS ASSY</b> <b>REPLACED BY AA427</b>	
	Common parts for item 25 air pump:		
	MKR-RK415	AIR PUMP REPAIR KIT	Not shown.
	654831	INTAKE REED VALVE	Not shown.
	621102	EXHAUST REED VALVE	Not shown.
	627076	BRUSH SET	
27.	990-081R	HOSE 3/4 ID 200PSI EPDM	
28.	830-111C	EL 1/4MNPT X 3/8HB POLYPROP	
29.	MKR-CHK14	RHS CHECK VALVE, 1/4 AIR	
30.	FO009	RHS FOAMER LID	
31.	801-021C	SCREW RD HD 10-24 X 3/4 PLT	
32.	838-511C	DECAL GREAT PLAINS BOOMS	
33.	SU56.112.2	RHS U-BOLT SQ 5/16 X 1.5X2 SS	
34.	803-008C	NUT HEX 5/16-18 PLT	
35.	TP-3814	RHS TEE 3/8MNPT X 1/4HB	
36.	833-056C	HIGH VOLUME FOAM MAKER CONTROL	
37.	833-057C	HIGH VOLUME 14' WIRE EXTENSION	
38.	CB-KNOB	RHS SPEED CONTROL KNOB	
39.	830-113C	EL 3/8MNPT X 1/4HB POLYPROP	

**Legend:** ① = 1st revision; ② = 2nd revision; ③ = 3rd revision; ● = use up existing stock; ⊗ = not interchangeable; ⊗ ① ② = for example: revision 2 is not interchangeable w/revision 1

Foam Marker Tank Assembly



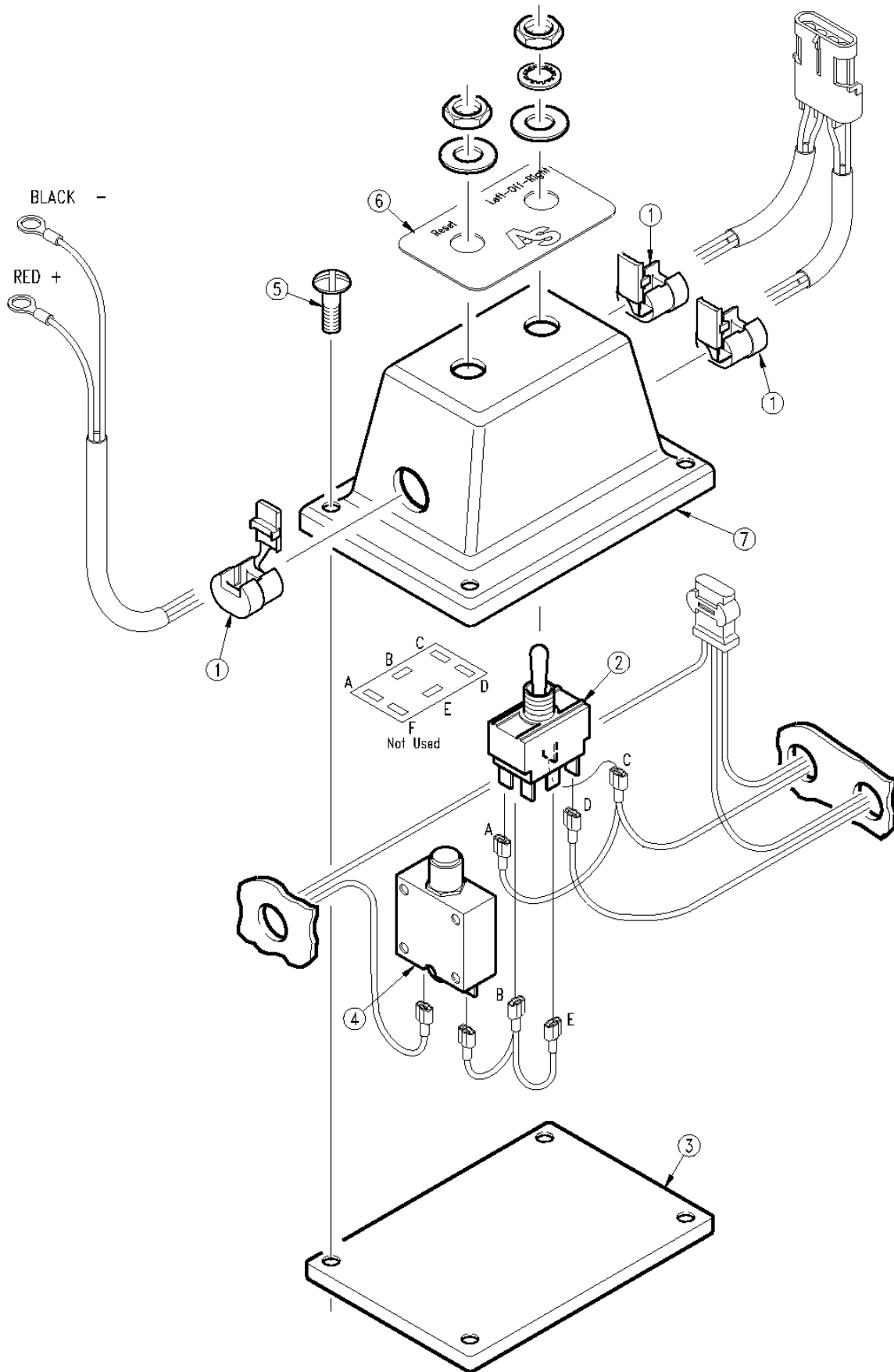
14026

**Foam Marker Tank Assembly**

Ref.	Part No.	Part Description	Comments
1.	⊗ 10437-A ● ① 10437	<b>RHS 14 GALLON FOAM MARKER TANK</b> <b>OBS &amp; REPLACED BY 10437-A</b>	
2.	AA366SS	RHS FOAMER SKID, STAINLESS STL	
3.	804-075C	WASHER FLAT 1/4 USS PLT	
4.	804-006C	WASHER LOCK SPRING 1/4 PLT	
5.	802-004C	HHCS 1/4-20X3/4 GR5	
6.	830-049C	EL 3/4MNPT X 3/4FNPT POLYP	
7.	3350-0082A	RHS LINE STRAINER, 80 MESH	
8.	3800-0047	80 MESH SCREEN	
9.	803-006C	NUT HEX 1/4-20 PLT	
10.	⊗ TLS-6SL ● ① TLS6SL	<b>RHS 6 SCREW-ON TANK LID</b> <b>OBS &amp; REPLACED BY TLS-6SL</b>	

**Legend:** ● = 1st revision; ⊗ = 2nd revision; ⊕ = 3rd revision; ● = use up existing stock; ⊗ = not interchangeable; ⊗ ① ⊗ = for example: revision 2 is not interchangeable w/revision 1

Foam Marker Control Toggle Switch Box Assembly (833-056C)



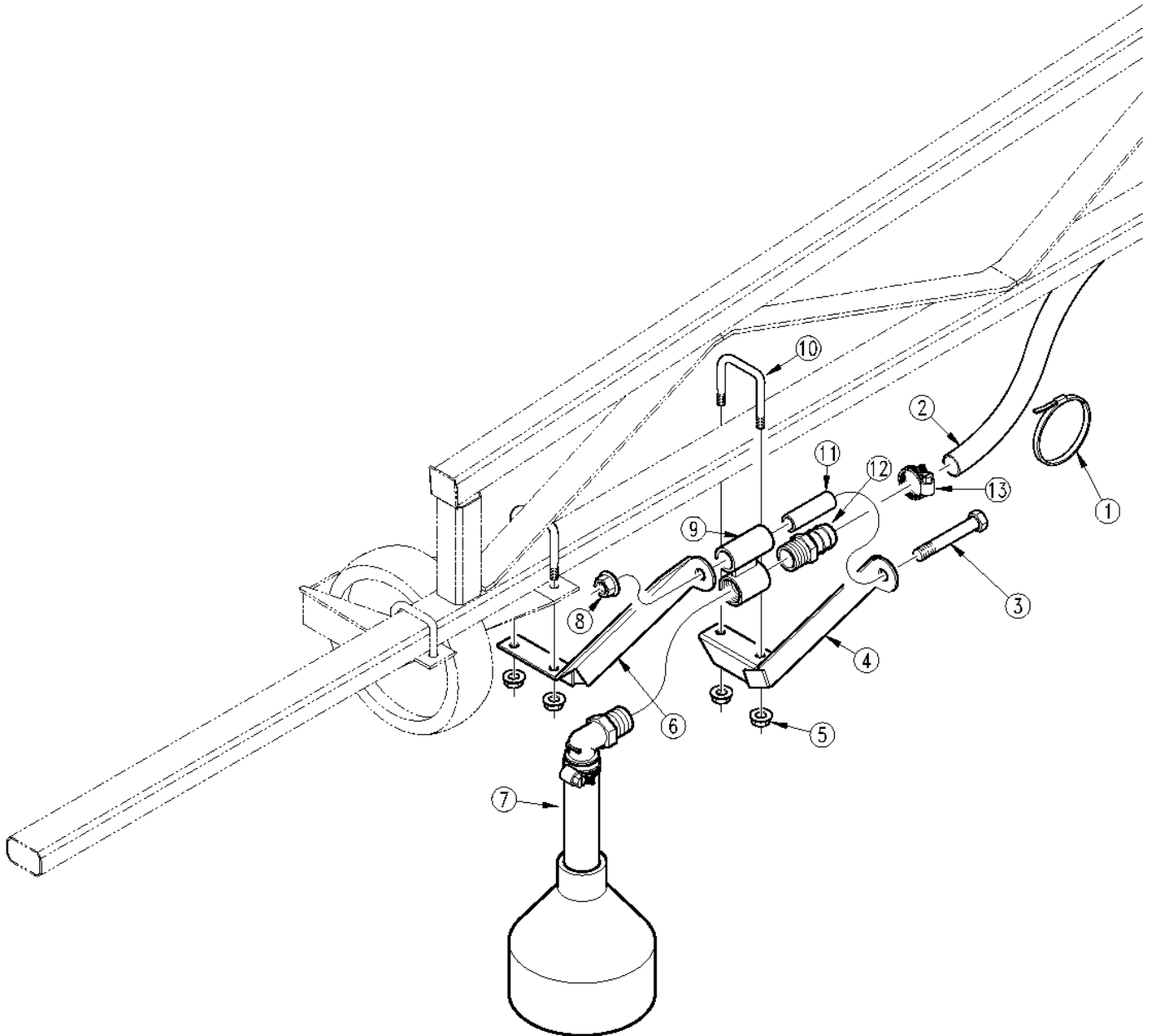
14050

**Foam Marker Control Toggle Switch Box Assembly (833-056C)**

Ref.	Part No.	Part Description	Comments
1.	SRF-50	RHS STRAIN RELIEF FITTING, #50	
2.	CB-DPDT	RHS SWITCH ON/OFF/ON, DPDT	
3.	FO003	RHS FOAMER CONTROL BOX LID	
4.	CB-BKR25	RHS 25 AMP P&B CIRCUIT BREAKER	
5.	801-003C	SCREW RD HD SLT 10-24X1/2 PLT	
6.	DEC-CB002	RHS DECAL - AS FOAM SWITCH BOX	
7.	FO011	RHS FOAMER CNT BOX W/ AS DECAL	Includes item 6.

**Legend:** ① = 1st revision; ② = 2nd revision; ③ = 3rd revision; ● = use up existing stock; ⊗ = not interchangeable; ⊗ ① ② = for example: revision 2 is not interchangeable w/revision 1

*Foam Marker Boot Swivel Assembly*



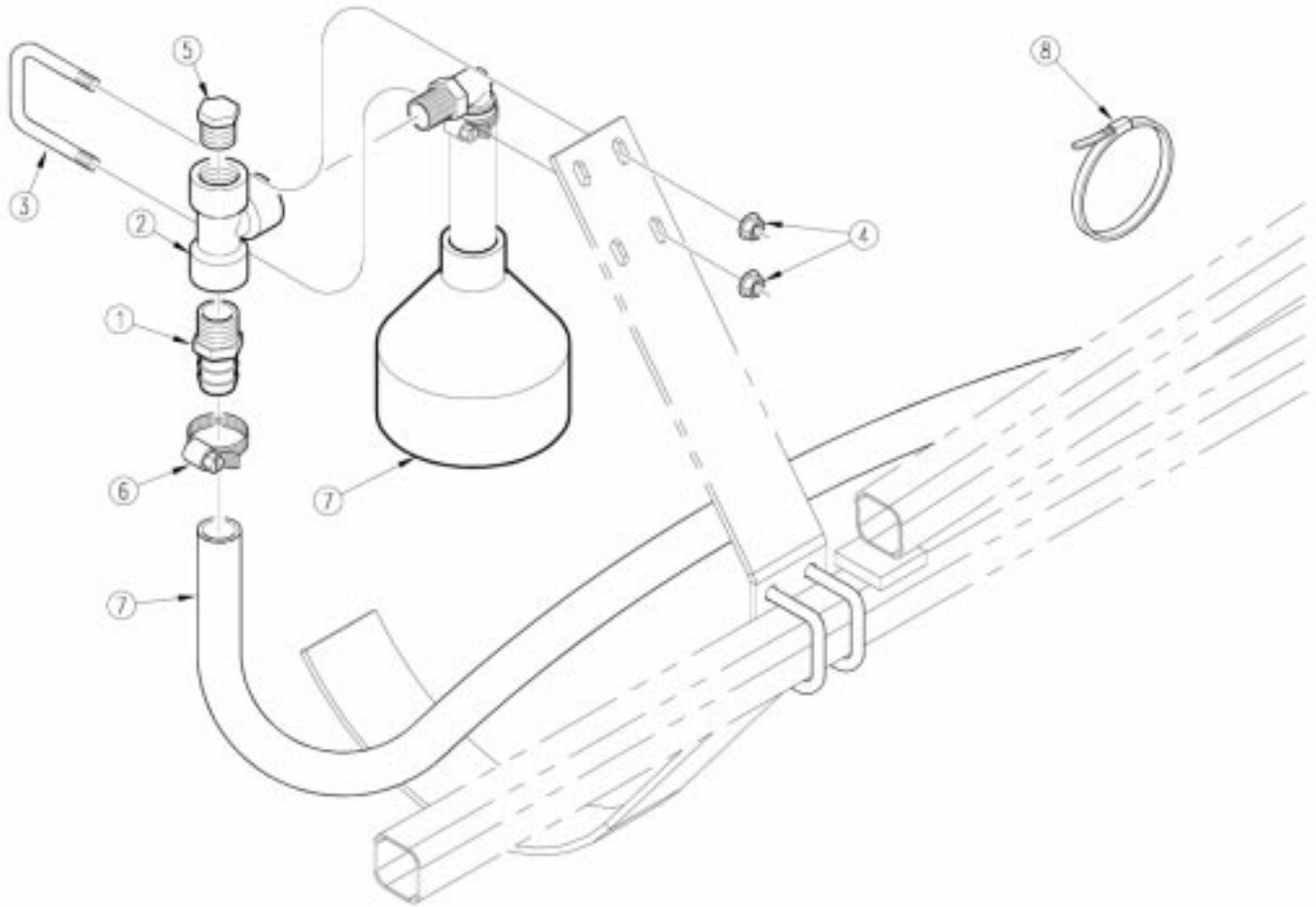
14049

**Foam Marker Boot Swivel Assembly**

Ref.	Part No.	Part Description	Comments
1.	800-060C	CABLE TIE .19X14.25 3DIA 50LB	
2.	990-078R	HOSE 3/4ID X 1/8 WL CLEAR PVC	
3.	802-041C	HHCS 1/2-13X3 1/2 GR5	
4.	502-082H	FOAM BOOT BRACKET - RH WELDMNT	
5.	803-199C	NUT HEX FLANGE 5/16-18 PLT	
6.	502-081H	FOAM BOOT BRACKET - LH WELDMNT	
7.	AA120	RHS FOAM DROP ASSEMBLY	
8.	803-169C	NUT HEX FLG. LOCK 1/2-13 PLT.	
9.	502-083H	FOAM BOOT SWIVEL MOUNT	
10.	806-094C	U-BOLT 5/16-18 X 2 X 2 1/8	
11.	506-182D	TUBE - BOOM SPACER	
12.	830-084C	AD 3/4MNPT X 3/4HB POLYPROP	
13.	800-127C	CLAMP WRM DRV #12 SS(.56-1.25)	

**Legend:** ● = 1st revision; ● = 2nd revision; ● = 3rd revision; ● = use up existing stock; ⊗ = not interchangeable; ⊗ ① ● = for example: revision 2 is not interchangeable w/revision 1

*CF600 Foam Marker Boot Swivel Assembly*



16945

**CF600 Foam Marker Boot Swivel Assembly**

Ref.	Part No.	Part Description	Comments
1.	830-084C	AD 3/4MNPT X 3/4HB POLYPROP	
2.	830-028C	TEE 3/4FNPT POLYPROP	
3.	806-107C	U-BOLT 5/16-18 X 1 17/32X2 1/8	
4.	803-199C	NUT HEX FLANGE 5/16-18 PLT	
5.	830-291C	PL 3/4 MNPT GLEAF POLYPROP	
6.	800-257C	CLAMP WRM DRV #20SS (.81-1.75)	
7.	AA120	RHS FOAM DROP ASSEMBLY	
8.	800-060C	CABLE TIE .19X14.25 3DIA 50LB	

**Legend:** ① = 1st revision; ② = 2nd revision; ③ = 3rd revision; ● = use up existing stock; ⊗ = not interchangeable; ⊗ ① ② = for example: revision 2 is not interchangeable w/revision 1