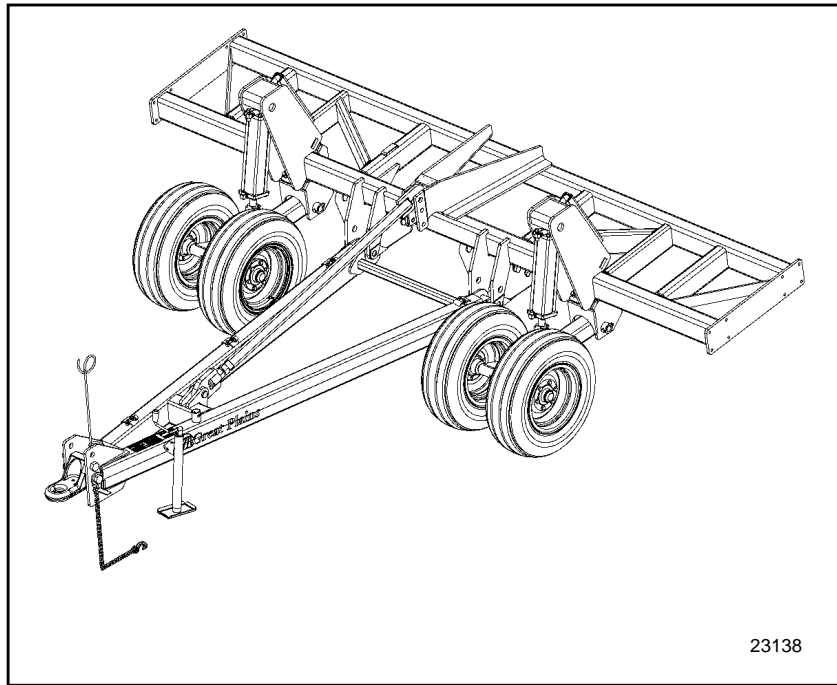


Parts Manual

Inline Ripper Hitch



Read the operator's manual entirely. When you see this symbol, the subsequent instructions and warnings are serious - follow without exception. Your life and the lives of others depend on it!



Cover illustration may show optional equipment not supplied with standard unit.



Table of Contents

Section 1 Introduction	1-1
General Information	1-1
Using This Manual	1-1
Manual Replacement Information	1-1
Manual Revisions	1-1
Touch-up Paint	1-1
Hardware Legend	1-2
Replacement Hardware	1-2
Serial Numbers	1-2
Part Number Service Coding	1-2
Part Number Index	1-3
Section 2 Frame	2-1
Tongue	2-1
Section 3 Transport	3-1
Transport	3-1
Spindle And Tire	3-3
Section 4 Hydraulics	4-1
Hydraulics	4-1
Hydraulic Cylinder (810-521C 4x16x1.38 Rod)	4-3
Hydraulic Cylinder (810-520C 3.75x16x1.38 Rod)	4-5
Section 5 Decals	5-1
Decals	5-1

© Copyright 2005 All rights Reserved

Great Plains Manufacturing, Inc. provides this publication "as is" without warranty of any kind, either expressed or implied. While every precaution has been taken in the preparation of this manual, Great Plains Manufacturing, Inc. assumes no responsibility for errors or omissions. Neither is any liability assumed for damages resulting from the use of the information contained herein. Great Plains Manufacturing, Inc. reserves the right to revise and improve its products as it sees fit. This publication describes the state of this product at the time of its publication, and may not reflect the product in the future.

Great Plains Manufacturing, Incorporated Trademarks

The following are trademarks of Great Plains Mfg., Inc.: Application Systems, Ausherman, Land Pride, Great Plains

All other brands and product names are trademarks or registered trademarks of their respective holders.

Printed in the United States of America.



Alphabetical Page Index

D

Decals5-1

H

Hydraulic Cylinder (810-520C 3.75x16x1.38 Rod)4-5

Hydraulic Cylinder (810-521C 4x16x1.38 Rod)4-3

Hydraulics4-1

S

Spindle And Tire3-3

T

Tongue2-1

Transport3-1



General Information

Using This Manual

This manual is divided into sections. The first section contains General Information, a Table of Contents, an Alphabetical Page Index, and a Part Number Index. The remaining sections divide the machine into segments (i.e. Frames, Drives, Hydraulics, etc.) which illustrate and list all parts.

The Great Plains parts in this manual are specially designed for this machine and should be replaced with Great Plains parts only.

The information in this manual is current at printing. Some parts may change to assure top performance.

Right-hand and left-hand as used in this manual are determined by facing the direction the machine will travel while in use.

Below is an example of two facing pages from a parts manual. Familiarize yourself with the contents of these pages.

Manual Replacement Information

Replacement manuals are available. Refer to your dealer or the Great Plains Publications Catalog for additional information.

Manual Revisions

When this manual is revised, the modification date is printed on the front cover and on the revised page(s).

Touch-up Paint

Repaint parts where paint is worn or scratched to prevent rust. Aerosol touch-up paint is available. To order use Great Plains parts numbers below:

- GP Green 821-001C
- GP Black 821-002C
- GP Beige 821-003C
- GP Buckskin 821-004C

The diagram shows two facing pages from a parts manual. The left page is an illustration page for 'Tongue & Pull Bar (S/N 00000-)'. It includes a page number '2-1', manual name 'CF500 and CF600', and a serial number break. The illustration is labeled with numbers 1 through 24. The right page is a parts list for 'Tongue & Pull Bar (S/N 00000-)'. It includes a page number '2-2', section name 'Frames', and a section number '2'. The parts list contains 24 items with their respective part numbers and descriptions. Labels with arrows point to various elements on both pages, including the page number, manual name, serial number break, illustration page, parts page, section name, section number, illustration heading, illustration, illustration number, manual number, and new or modification date.

Hardware Legend

AR	As Required
BLADE	Blade Bolt
C	Cap Screw
CP	Cotter Pin
CPHSSS	Cup Point Hex Socket Set Screw
CPSHSS	Cup Point Square Head Set Screw
CPSQHSS	Cup Point Square Head Set Screw
CRFCHMS	Cross Recess Flat Countersunk Head Mach. Screw
CRPHMS	Cross Recess Pan Head Machine Screw
CRPHTFS	Cross Recess Pan Head Thread Forming
CRRHMS	Cross Recess Round Head Machine Screw
CRTHMS	Cross Recess Truss Head Machine Screw
CSNB	Countersunk Square Neck Bolt
FHMS	Flat Head Machine Screw
FTC	Full Thread Cap Screw
H	Hex Nut
HCLN	Hex Center Lock Nut
HFLCS	Hex Flange Lock Cap Screw
HFS	Hex Flange Screw
HFSLN	Hex Flange Serrated Lock Nut
HFSS	Hex Flange Serrated Screw
HHCS	Hex Head Cap Screw or Metric Bolt
HSBHCS	Hex Socket Button Head Cap Screw
HSFCHCS	Hex Socket Flat Countersunk Head Cap Screw
HSHCS	Hex Socket Head Cap Screw
HSSS	Hex Socket Head Screw
HTLN	Hex Top Lock Nut
HWHCS	Hex Washer Head Cap Screw

HWHMS	Hex Washer Head Machine Screw
HXBHCS	Hex Socket Button Head Cap Screw
J	Hex Jam Nut
JIC	37 Degree Tapered Thread
L	Helical Spring Lock Washer
LUG	Lug Bolt
NFC	National Fine Cap Screw
NPSM	National Pipe Straight Mechanical
NPTF	National Pipe Taper Fuel
P	Wide Plain Washer
PHMS	Pan Head Machine Screw
PLOW	Plow Bolt
RHMS	Round Head Machine Screw
RHSNB	Round Head Square Neck Bolt
SCREW LEVELING	Leveling Screw
SCREW THUMB	Thumb Screw
SCREW WELD	Weld Screw
SFCHMS	Slotted Flat Countersunk Head Machine Screw
SFHMS	Slotted Fillister Head Machine Screw
SP	Special
SP SCREW	Special Screw
SQHSS	Square Head Set Screw
SRHMS	Slotted Round Head Machine Screw
SSS	Socket Set Screw
STCS	Self Tapping Cap Screw
STHMS	Slotted Truss Head Machine Screw
WHEEL	Wheel Studs and Hub Long Bolts
WING	Wing Bolt

Replacement Hardware

The **Hardware Legend** above lists hardware abbreviations used in the parts lists. All bolts and nuts are grade 5 unless otherwise noted. The use of improper grades of hardware can result in personal injury, damage to equipment, or loss of property.

Serial Numbers

Always use the serial and model number when ordering parts. Refer to the operator's manual for serial number plate location.

(S/N 20001+ or S/N 20001 and above) Includes serial numbers 20001 and above (to the latest number)

(S/N 10001↔20000) Includes serial numbers between 10000 and 20001

(S/N 10000- or S/N 10000 and below) Includes serial numbers 10000 and below (to the earliest number)

Part Number Service Coding

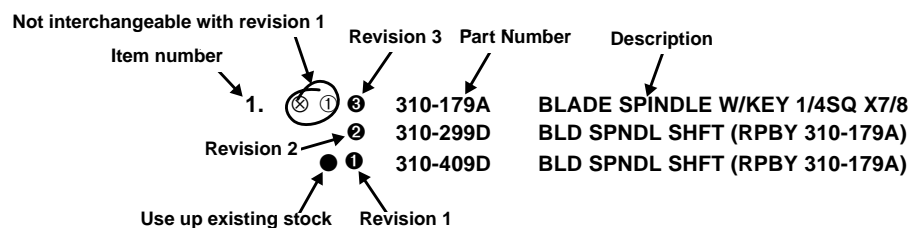
Within the parts lists some part numbers are coded for revisions and interchangeability.

Bold face type indicates parts that have been revised. These parts are considered interchangeable unless otherwise noted.

Service Code Legend:

- ① First revision, e.g.; ② is 2nd revision, ③ is 3rd revision, etc.
(Greater numbers are the newest.)
- Use existing stock of this part before ordering the revision.
- ⊗ Not interchangeable
- ⊗①② Revision 2 is not interchangeable w/1

The sample below shows how these codes are used.



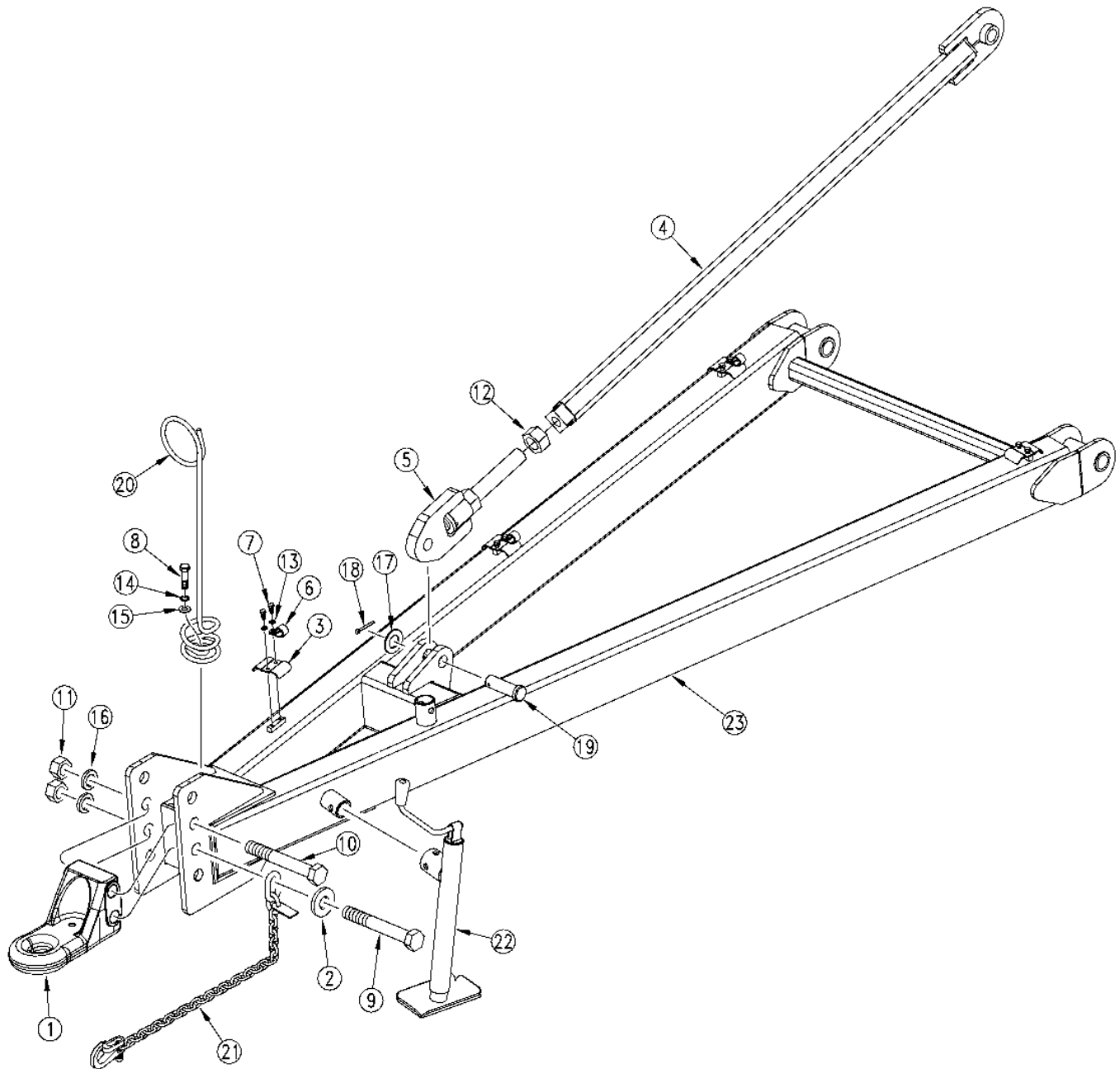
Part Number Index

<u>Part Number</u>	<u>Page</u>	<u>Part Number</u>	<u>Page</u>	<u>Part Number</u>	<u>Page</u>	<u>Part Number</u>	<u>Page</u>
170-201D	2-8	804-030C	2-8				
194-070D	2-8	804-039C	2-8				
196-292H	3-10	804-055C	3-12				
1M7016	4-16	805-016C	3-12				
1M7016	4-18	805-021C	2-8				
200-001D	3-12	805-152C	3-10				
2A0012	4-16	805-196C	2-8				
2A0012	4-18	807-073C	2-8				
2A0018	4-16	810-151C	4-16				
2A0018	4-18	810-373C	4-18				
2A0024	4-16	810-520C	3-10				
2A0024	4-18	810-520C	4-14				
2A0132	4-16	810-521C	3-10				
2A0132	4-18	810-521C	4-14				
2A0208	4-16	811-060C	4-14				
2A0208	4-18	811-063C	4-14				
2M6824	4-16	811-859C	4-14				
2M6824	4-18	811-860C	4-14				
3R4812	4-18	814-178C	3-12				
3R5812	4-16	814-221C	3-12				
4R4108	4-18	814-232C	3-10				
4R5108	4-16	814-232C	3-12				
502-068D	2-8	815-079C	3-10				
596-155H	3-10	815-079C	3-12				
599-014H	2-8	815-082C	3-12				
599-015H	3-10	815-082C	3-12				
599-016H	3-10	815-085C	3-12				
599-017H	3-10	816-011C	3-12				
599-017H	3-12	816-035C	3-12				
599-018H	2-8	817-348C	4-14				
599-021H	2-8	818-019C	5-20				
599-080D	3-10	818-339C	5-20				
5R4124	4-18	818-557C	5-20				
5R5124	4-16	818-855C	5-20				
6R4164	4-18	822-018C	3-12				
6R5164	4-16	822-019C	3-12				
7M6324	4-16	822-020C	3-12				
7M6324	4-18	822-021C	3-12				
800-058C	3-10	838-160C	5-20				
800-058C	3-12	838-161C	5-20				
800-064C	2-8	890-005C	3-10				
800-301C	4-14	890-005C	3-12				
802-007C	2-8	890-183C	2-8				
802-023C	4-16	890-245C	2-8				
802-023C	4-18	890-264C	3-10				
802-039C	3-10	890-264C	3-12				
802-057C	3-10						
802-086C	3-10						
802-099C	3-10						
802-099C	3-12						
802-104C	3-10						
802-104C	3-12						
802-258C	2-8						
802-543C	2-8						
802-544C	2-8						
803-019C	3-10						
803-019C	3-12						
803-021C	3-10						
803-027C	3-10						
803-029C	3-12						
803-034C	2-8						
803-073C	2-8						
804-009C	2-8						
804-015C	2-8						
804-017C	2-8						
804-022C	3-10						
804-023C	3-10						
804-025C	3-10						

Part Number Index

<u>Part Number</u>	<u>Page</u>	<u>Part Number</u>	<u>Page</u>	<u>Part Number</u>	<u>Page</u>	<u>Part Number</u>	<u>Page</u>
--------------------	-------------	--------------------	-------------	--------------------	-------------	--------------------	-------------

Tongue



23139

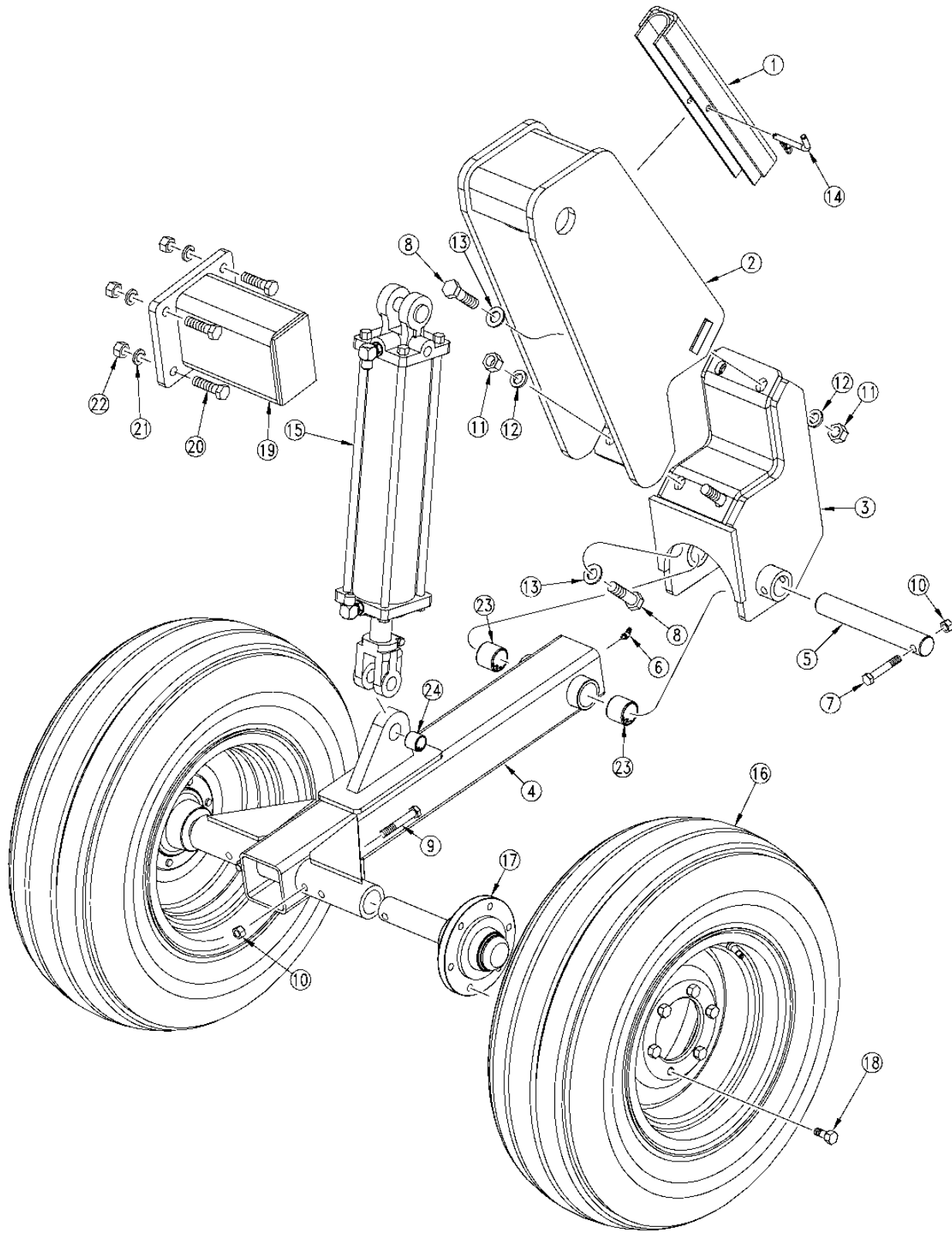
Tongue

2

Ref.	Part No.	Part Description	Comments
1.	170-201D	CASTING LARGE HITCH STRAP	
2.	194-070D	SAFETY CHAIN WASHER	
3.	502-068D	HYD HOSE CLAMP BRACKET	
4.	599-014H	TONGUE TOP LINK WLMT	
5.	599-021H	RIPPER LEVEL LINK ADJUSTER	
6.	800-064C	HOSE CLIP 13/16 ID	
7.	802-007C	HHCS 5/16-18X3/4 GR5	
8.	802-258C	HHCS 1/2-13X1 GR5	
9.	802-543C	HHCS 1 1/4-7X10 GR5 SPTH	
10.	802-544C	HHCS 1 1/4-7X9 GR5 SPTH	
11.	803-034C	NUT HEX 1 1/4-7 PLT	
12.	803-073C	NUT HEX 1 1/2-6 PLT	
13.	804-009C	WASHER LOCK SPRING 5/16 PLT	
14.	804-015C	WASHER LOCK SPRING 1/2 PLT	
15.	804-017C	WASHER FLAT 1/2 USS PLT	
16.	804-030C	WASHER LOCK 1 1/4 SPRING PLT	
17.	804-039C	WASHER FLAT 1 1/4 SAE PLT	
18.	805-021C	PIN COTTER 1/4 X 2 PLT	
19.	805-196C	PIN CLEVIS 1 1/4 X 3 3/8 GR5	
20.	807-073C	SPRING HOSE LOOP HEAVY	
21.	890-183C	SAFETY CHAIN 20000 LB	
22.	890-245C	SCREW JACK 2000# 15-30 TOP WND	
23.	599-018H	RIPPER TONGUE	

Legend: ● = 1st revision; ● = 2nd revision; ● = 3rd revision; ● = use up existing stock; ⊗ = not interchangeable; ⊗ ① ● = for example: revision 2 is not interchangeable w/revision 1

Transport



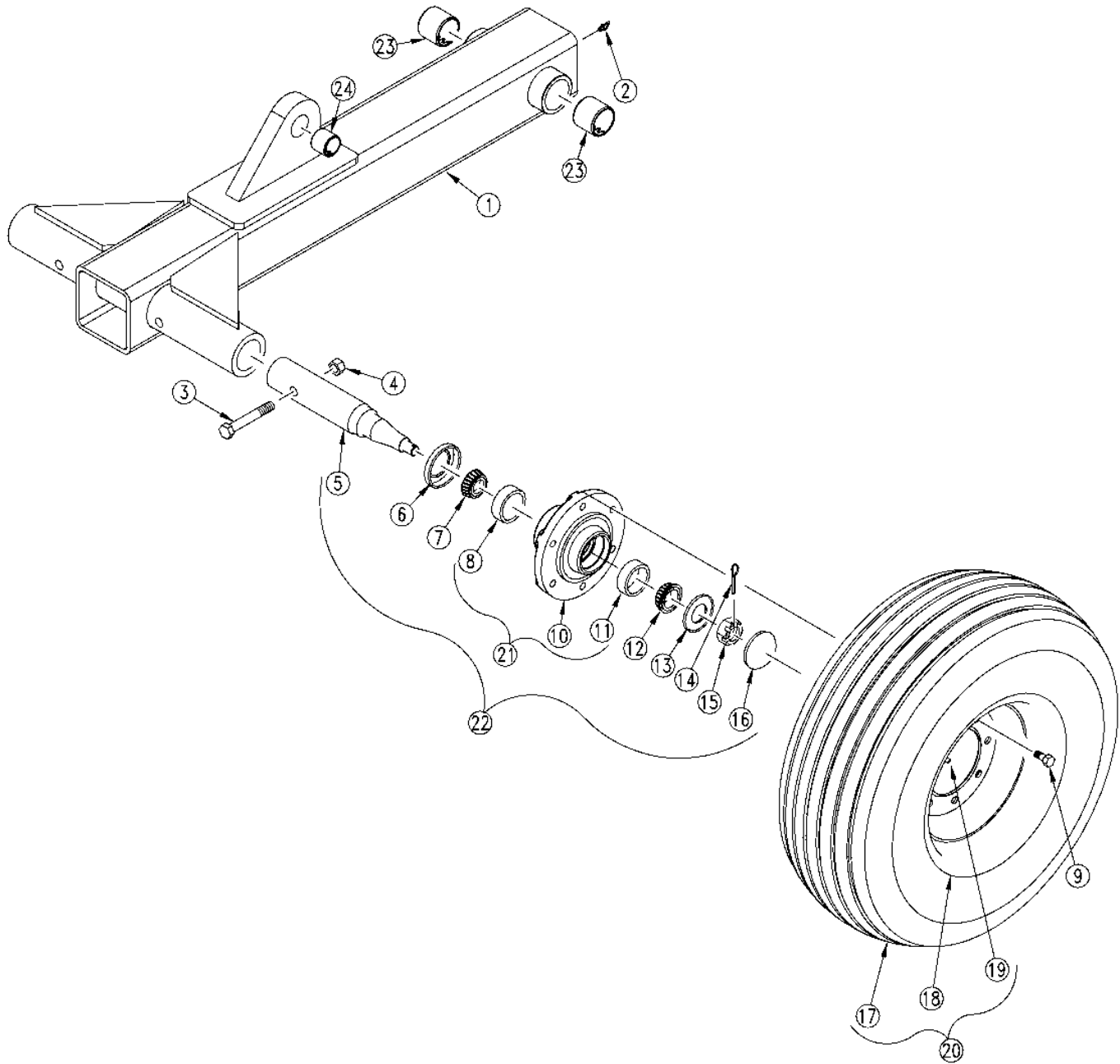
Transport

3

Ref.	Part No.	Part Description	Comments
1.	196-292H	CYL LOCK CHANNEL 1 1/2X17 3/4	
2.	599-015H	TONGUE UPPER GW MNT WLMT	
3.	599-016H	TONGUE LOWER GW MNT WLMT	
4.	599-017H	TONGUE GUAGE WHEEL WLMT	
5.	599-080D	TONGUE GW PIVOT PIN	
6.	800-058C	GREASE ZERK 1/4-28 X 45-DEG	
7.	802-039C	HHCS 1/2-13X3 GR5	
8.	802-086C	HHCS 3/4-10X2 3/4 GR5	
9.	802-099C	HHCS 1/2-13X3 1/4 GR5	
10.	803-019C	NUT LOCK 1/2-13 PLT	
11.	803-027C	NUT HEX 3/4-10 PLT	
12.	804-023C	WASHER LOCK SPRING 3/4 PLT	
13.	804-025C	WASHER FLAT 3/4 SAE PLT	
14.	805-152C	BENT PIN 3/8 X 2 1/2 USE W/COT	
15.	810-520C	CYL REP 3.75X16X1.38 ROD (TIE)	Refer to page 4-5 for breakdown
	810-521C	CYL REP 4X16X1.38 ROD (TIE)	Refer to page 4-3 for breakdown
16.	814-232C	TIRE/WHL 11LX15 8PLY W/TB WHT	Refer to page 3-3 for breakdown
17.	815-079C	HUB AND SPINDLE ASSY 6 BOLT	Refer to page 3-3 for breakdown
18.	802-104C	BOLT WHEEL 1/2-20X1 90-DEG	
19.	596-155H	GW EXT MOUNT	
20.	802-057C	HHCS 5/8-11X2 1/4 GR5	
21.	804-022C	WASHER LOCK SPRING 5/8 PLT	
22.	803-021C	NUT HEX 5/8-11 PLT	
23.	890-264C	BUSHING 1 3/4 X 1 1/2 X 1 1/2	
24.	890-005C	BUSHING CYL 1 1/4 X 1 X 1	

Legend: ● = 1st revision; ● = 2nd revision; ● = 3rd revision; ● = use up existing stock; ⊗ = not interchangeable; ⊗ ① ● = for example: revision 2 is not interchangeable w/revision 1

Spindle And Tire

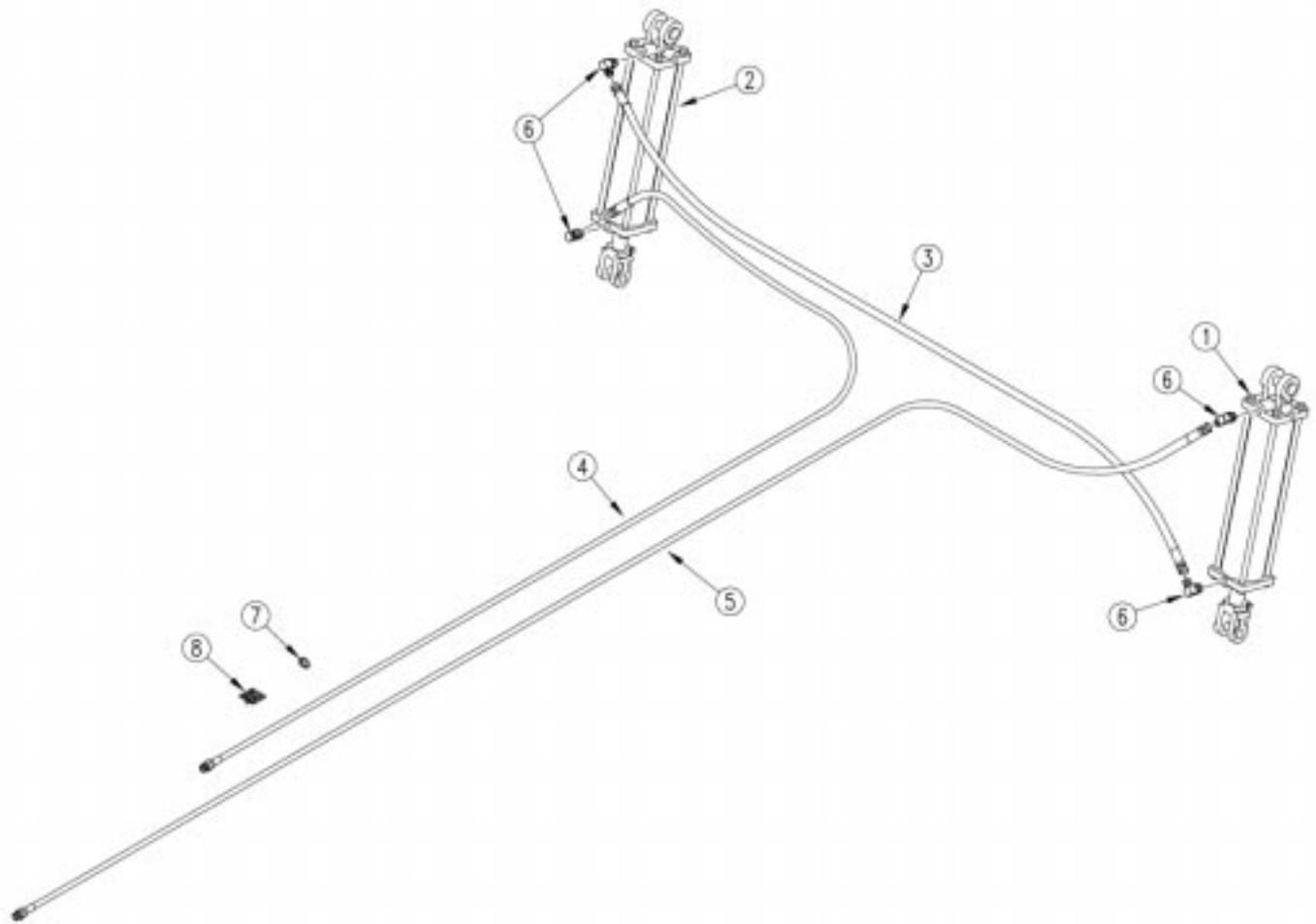


Spindle And Tire

Ref.	Part No.	Part Description	Comments
1.	599-017H	TONGUE GUAGE WHEEL WLMT	
2.	800-058C	GREASE ZERK 1/4-28 X 45-DEG	
3.	802-099C	HHCS 1/2-13X3 1/4 GR5	
4.	803-019C	NUT LOCK 1/2-13 PLT	
5.	815-085C	SPINDLE SGL 1.75X10.72	
6.	816-011C	SEAL 2.56X1.625X.438 CR16289	
7.	822-018C	BEARING CONE LM-29749	
8.	822-019C	BEARING CUP LM-29710	
9.	802-104C	BOLT WHEEL 1/2-20X1 90-DEG	
10.	815-082C	HUB 6 BOLT 4 5/8 PILOT W/ CUPS	
11.	822-020C	BEARING CUP LM-67010	
12.	822-021C	BEARING CONE LM-67048	
13.	804-055C	WASHER SPINDLE - 7/8	
14.	805-016C	PIN COTTER 3/16 X 1 1/4 PLT	
15.	803-029C	NUT HEX SLOTTED 7/8-14 PLT	
16.	200-001D	HUB GREASE CAP	
17.	814-178C	TIRE TITAN 11L-15 X 8 PLY	
18.	814-221C	WHEEL 15X8 6 BOLT WHITE	
19.	816-035C	VALVE STEM TR415X.625X1 1/4 LG	
20.	814-232C	TIRE/WHL 11LX15 8PLY W/TB WHT	
21.	815-082C	HUB 6 BOLT 4 5/8 PILOT W/ CUPS	
22.	815-079C	HUB AND SPINDLE ASSY 6 BOLT	
23.	890-264C	BUSHING 1 3/4 X 1 1/2 X 1 1/2	
24.	890-005C	BUSHING CYL 1 1/4 X 1 X 1	

Legend: ● = 1st revision; ● = 2nd revision; ● = 3rd revision; ● = use up existing stock; ⊗ = not interchangeable; ⊗ ① ● = for example: revision 2 is not interchangeable w/revision 1

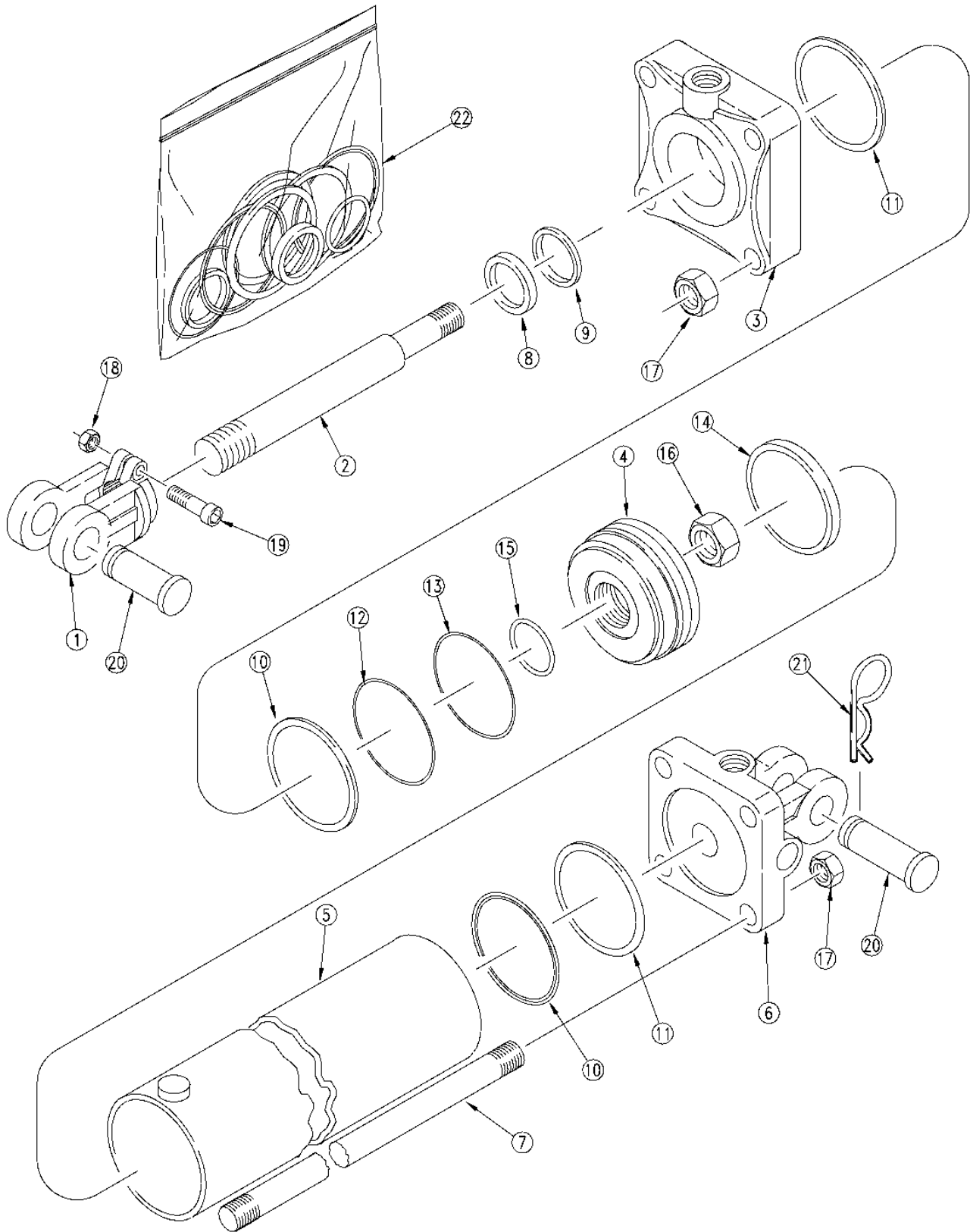
Hydraulics



Hydraulics

Ref.	Part No.	Part Description	Comments
1.	810-521C	CYL REP 4X16X1.38 ROD (TIE)	Refer to page 4-3 for breakdown
2.	810-520C	CYL REP 3.75X16X1.38 ROD (TIE)	Refer to page 4-5 for breakdown
3.	811-859C	HH1/2R2 114 3/4FJIC	
4.	811-060C	HH1/2R2 272 3/4FJIC 1/2MNPT	
5.	811-860C	HH1/2R2 326 3/4FJIC 1/2MNPT	
6.	811-063C	EL 3/4MJIC 3/4MORB	
7.	800-301C	CABLE TIE 2 DIA MIN - YLW	
8.	817-348C	PLASTIC HOSE LABEL	

Hydraulic Cylinder (810-521C 4x16x1.38 Rod)



23144

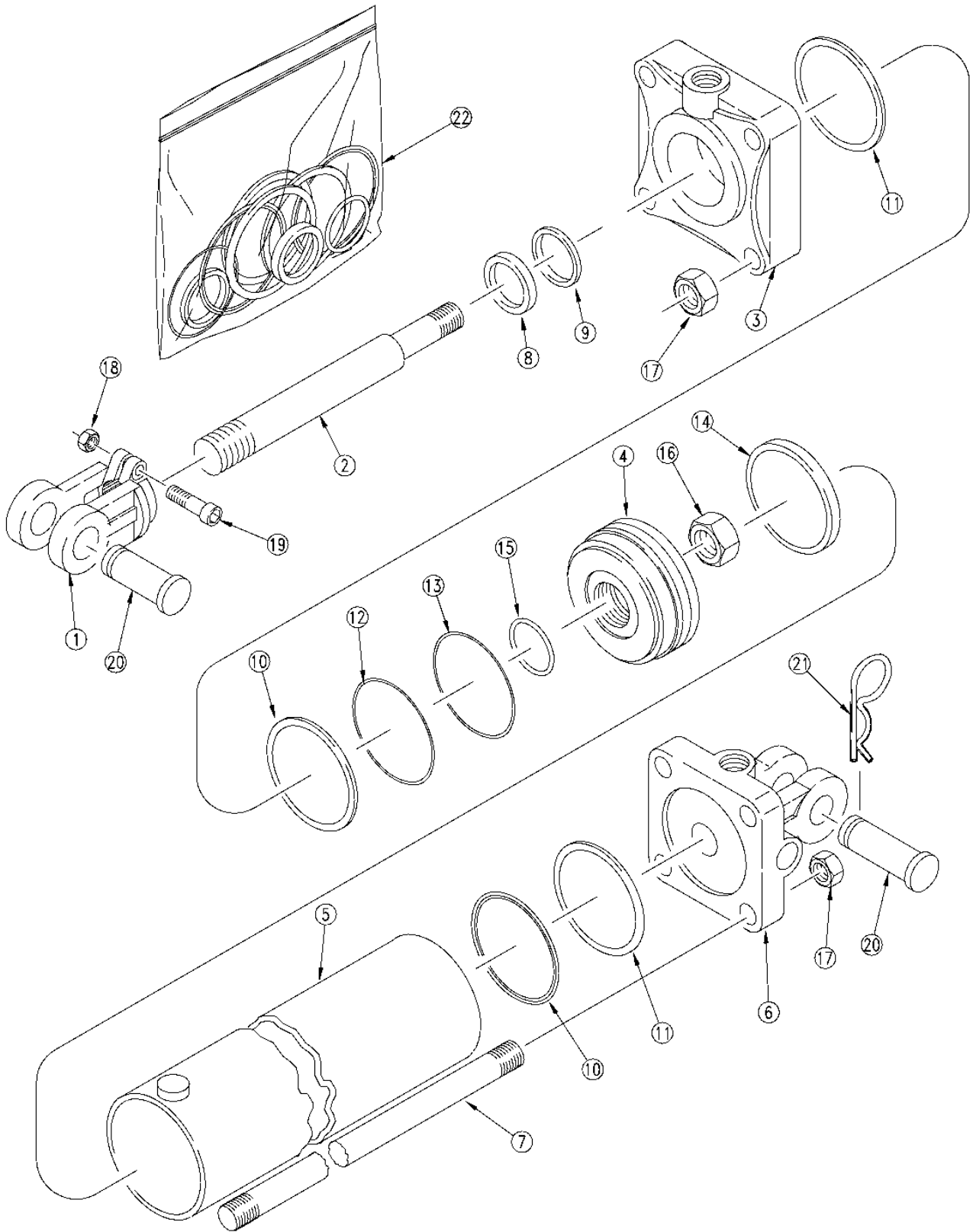
Hydraulic Cylinder (810-521C 4x16x1.38 Rod)

Ref.	Part No.	Part Description	Comments
1.	1M7016	CLEVIS ROD MIDWAY	
2.	2M6824	MW ROD	
3.	3R5812	MW HEAD	
4.	4R5108	PISTON MIDWAY	
5.	5R5124	MW TUBE	
6.	6R5164	BASE MIDWAY	
7.	7M6324	MW TIE ROD 4 X 16 CYLINDER	
8.		MW WIPER SEAL	Only available in item 22
9.		U-CUP	Only available in item 22
10.		O-RING MIDWAY	Only available in item 22
11.		BACK UP MIDWAY	Only available in item 22
12.		TEFLON SEAL	Only available in item 22
13.		O-RING LOADER MIDWAY	Only available in item 22
14.		WEAR RING MIDWAY	Only available in item 22
15.		MW PISTON NUT SEAL	Only available in item 22
16.	2A0024	MW PISTON NUT 1-14	
17.	2A0018	MW TIE ROD NUT	
18.	2A0012	MW NUT	
19.	802-023C	HHCS 3/8-16X1 3/4 GR5	
20.	2A0208	MW CLEVIS PIN	
21.	2A0132	MW PIN CLIP	
22.	810-151C	SEAL KIT MW 4 RPH CYL 4A5103	



Legend: ● = 1st revision; ● = 2nd revision; ● = 3rd revision; ● = use up existing stock; ⊗ = not interchangeable; ⊗ ① ● = for example: revision 2 is not interchangeable w/revision 1

Hydraulic Cylinder (810-520C 3.75x16x1.38 Rod)



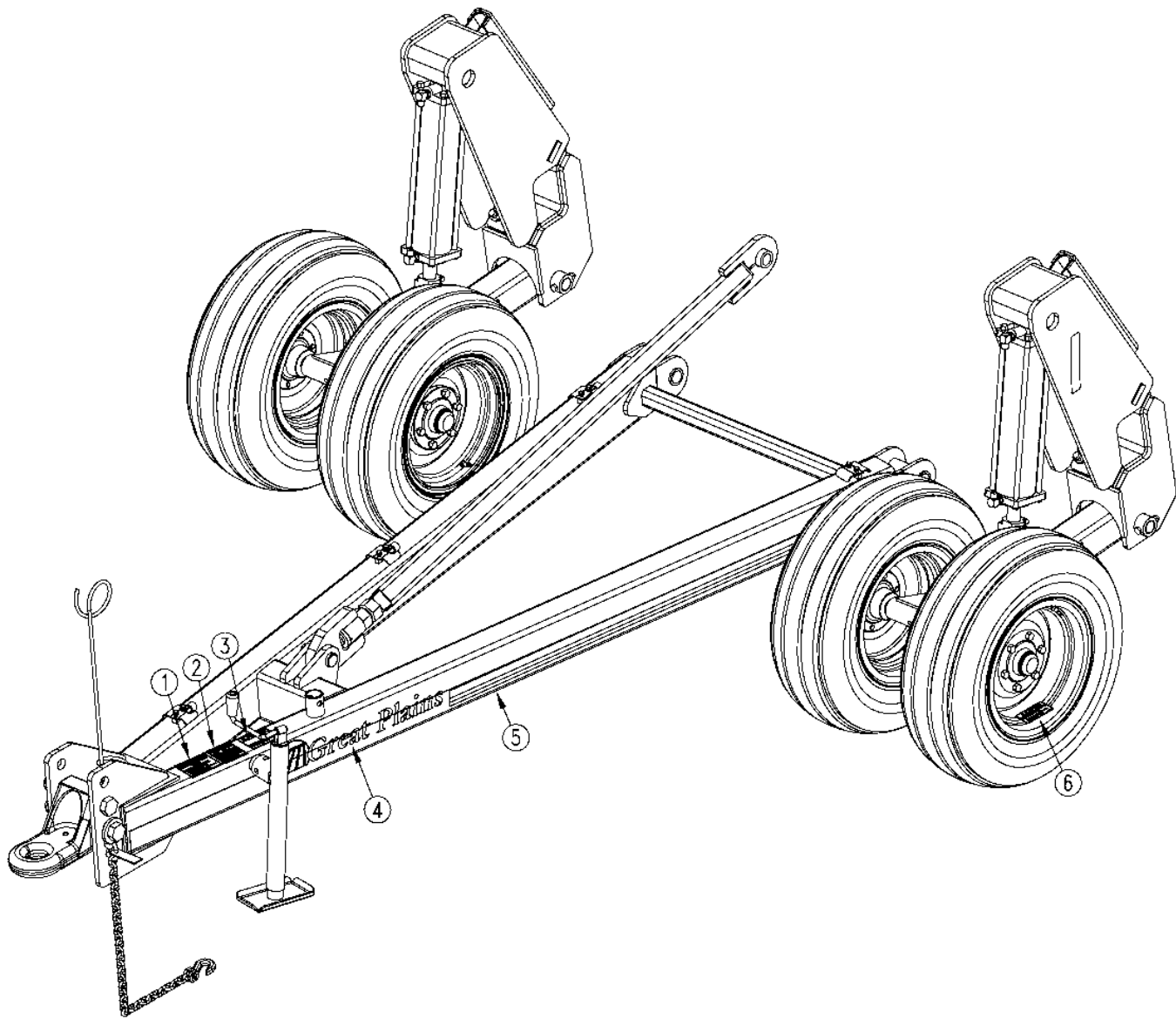
Hydraulic Cylinder (810-520C 3.75x16x1.38 Rod)

Ref.	Part No.	Part Description	Comments
1.	1M7016	CLEVIS ROD MIDWAY	
2.	2M6824	MW ROD	
3.	3R4812	MW HEAD	
4.	4R4108	PISTON MIDWAY	
5.	5R4124	MW TUBE	
6.	6R4164	BASE MIDWAY	
7.	7M6324	MW TIE ROD 4 X 16 CYLINDER	
8.		MW WIPER SEAL	Only available in item 22
9.		U-CUP	Only available in item 22
10.		O-RING MIDWAY	Only available in item 22
11.		MW BACK UP	Only available in item 22
12.		TEFLON SEAL	Only available in item 22
13.		O-RING LOADER MIDWAY	Only available in item 22
14.		WEAR RING MIDWAY	Only available in item 22
15.		MW PISTON NUT SEAL	Only available in item 22
16.	2A0024	MW PISTON NUT 1-14	
17.	2A0018	MW TIE ROD NUT	
18.	2A0012	MW NUT	
19.	802-023C	HHCS 3/8-16X1 3/4 GR5	
20.	2A0208	MW CLEVIS PIN	
21.	2A0132	MW PIN CLIP	
22.	810-373C	SEAL KIT MW 3.75X1.375 4A4103	



Legend: ● = 1st revision; ● = 2nd revision; ● = 3rd revision; ● = use up existing stock; ⊗ = not interchangeable; ⊗ ① ● = for example: revision 2 is not interchangeable w/revision 1

Decals



Decals

Ref.	Part No.	Part Description	Comments
1.	818-019C	DECAL WARNING NEG TONGUE WT	
2.	818-339C	DECAL WARNING HIGH PRESSUR SML	
3.	818-557C	DECAL DANGER CANNOT READ ENG	
4.	838-161C	DECAL LOGO&GP F/STRIPE 4 X 24	
5.	838-160C	DECAL 3 COLOR STRIPE 2.50 WIDE	
6.	818-855C	DECAL CAUTION TIRE 36 PSI	