

## **Assembly Instructions for the Ridge Splitter**

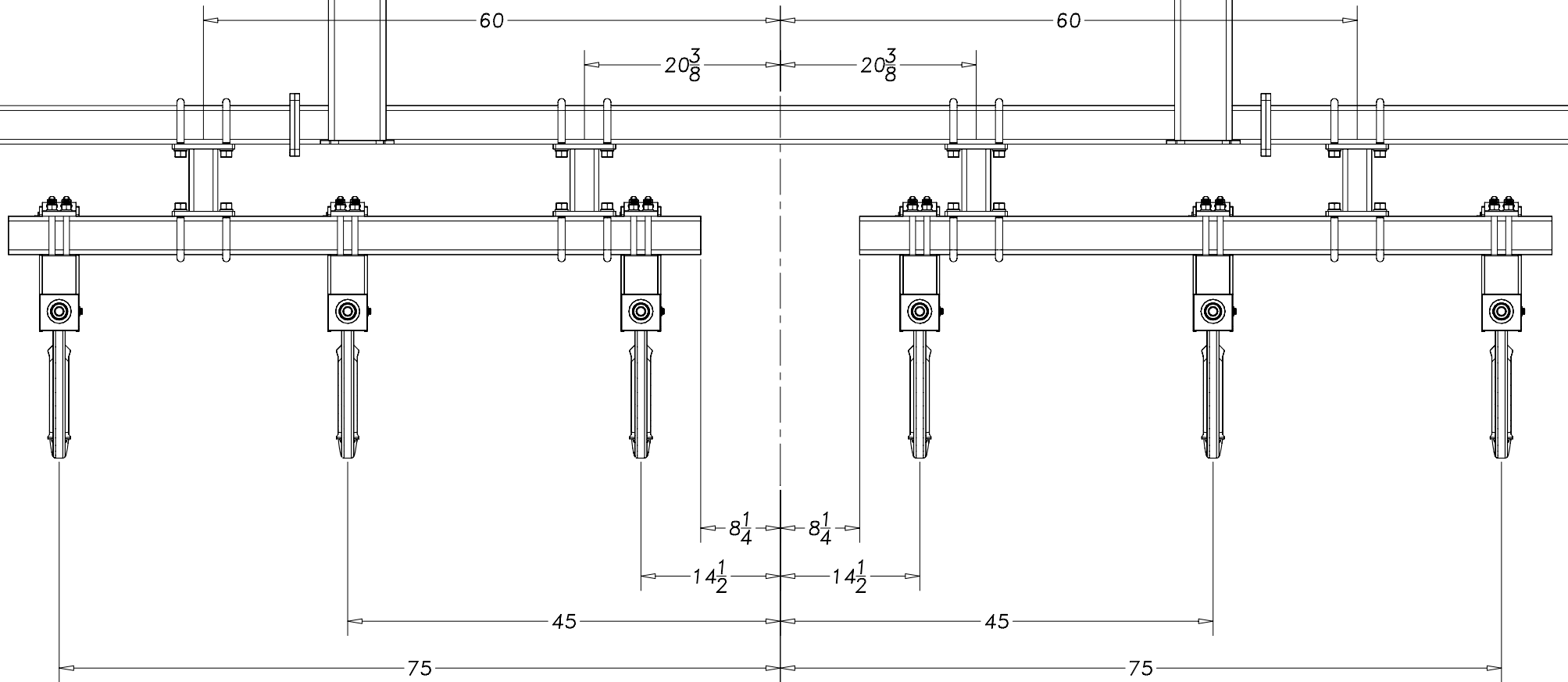
### **Verti-Till**

**9/23/03**

Your initial action is to bolt the angled drop stubs [(3) 589-147H] to the back 4x4 tube on the Verti-Till using 5/8x4x5 ½ U-Bolts [(63) 806-184C] 5/8" hex nuts [(25) 803-021C] and 5/8" lock washers [(26) 804-022C]. Be sure to place them as shown on the overhead layout. Do not tighten these bolts at this time. Your next step is to U-Bolt the splitter shank tube(s) [(1) 589-077D or 589-081D] to the drop stubs. Be sure everything is placed with the correct dimensions and tighten everything down at this time.

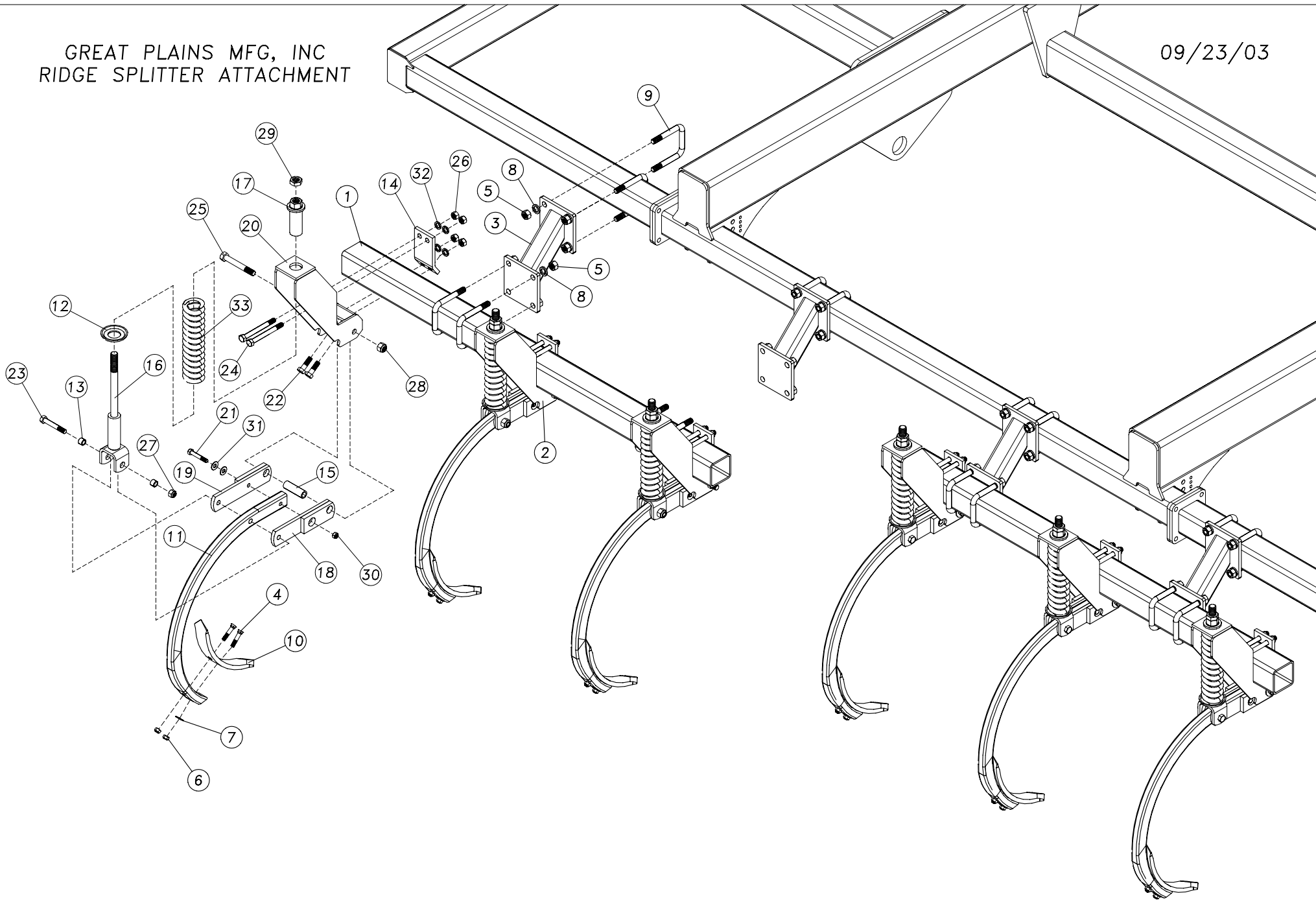
Your spring shank should come to you pre-assembled, so installation of these should be fairly straightforward. Take the shank mount plate off of the assembly and bolt the spring shank assembly to the splitter shank tube. Space the spring shank assemblies out as shown on the overhead layout and tighten bolts.

GREAT PLAINS MFG, INC  
VT7300 RIDGE SPLITTER ATTACHMENT



GREAT PLAINS MFG, INC  
RIDGE SPLITTER ATTACHMENT

09/23/03



FOR PARTS AND ASSEMBLY REFERENCE ONLY



**VERTI-TILL FINISHING ATTACHMENTS  
RIDGE SPLITTER**

| REF #  | DESCRIPTION                    | PART NO. | VT5300 | VT7300 |
|--|--------------------------------|----------|--------|--------|
| <b>RIDGE SPLITTER PARTS LIST</b>                                       |                                |          |        |        |
| 1  | 72" SPLITTER SHANK TUBE        | 589-077D |        | 2      |
|  | 102" SPLITTER SHANK TUBE       | 589-081D | 1      |        |
| 2  | SPRING SHANK ASSEMBLY          | 589-136S | 4      | 6      |
| 3  | ANGLED DROP STUB               | 589-147H | 4      | 4      |
| 4  | PLOW 1/2-10X2 1/2 GR5          | 802-590C | 8      | 12     |
| 5  | NUT HEX 3/4-10 PLT             | 803-027C | 32     | 32     |
| 6  | NUT HEX TOP LOCK 1/2-13 PLT    | 803-342C | 8      | 12     |
| 7  | WASHER FLAT 1/2 USS PLT        | 804-017C | 4      | 6      |
| 8  | WASHER LOCK SPRING 3/4 PLT     | 804-023C | 32     | 32     |
| 9  | U-BOLT 3/4-10X4 1/32X5 3/8     | 806-012C | 16     | 16     |
| 10   | CHISEL POINT 5/8X2X15          | 820-032C | 4      | 6      |
| <b>(INDIVIDUAL PARTS INCLUDED IN (589-136S) SPRING SHANK ASSEMBLY)</b> |                                |          |        |        |
| 11   | MAX MULCHER SHANK              | MC0013   | 1      | 1      |
| 12   | CUP WASHER                     | 589-065D | 1      | 1      |
| 13   | SHANK BOLT SPACER              | 589-070D | 2      | 2      |
| 14   | SHANK MOUNT PLATE              | 589-071D | 1      | 1      |
| 15   | SHANK PIVOT BUSHING            | 589-072D | 1      | 1      |
| 16   | SHANK SPRING BOLT              | 589-131H | 1      | 1      |
| 17   | SHANK SPRING BOLT TIGHTENER    | 589-132H | 1      | 1      |
| 18   | SHANK CRADLE RH                | 589-133H | 1      | 1      |
| 19   | SHANK CRADLE LH                | 589-134H | 1      | 1      |
| 20   | SHANK UPRIGHT                  | 589-135H | 1      | 1      |
| 21   | HHCS 1/2-13X3 GR5              | 802-039C | 1      | 1      |
| 22   | HHCS 5/8-11X2 GR5              | 802-055C | 2      | 2      |
| 23   | HHCS 5/8-11X4 GR5              | 802-060C | 1      | 1      |
| 24   | HHCS 5/8-11X6 GR5              | 802-116C | 2      | 2      |
| 25   | HHCS 3/4-10X5 1/2 GR5          | 802-594C | 1      | 1      |
| 26   | NUT HEX 5/8-11 PLT             | 803-021C | 4      | 4      |
| 27   | NUT LOCK 5/8-11 PLT            | 803-024C | 1      | 1      |
| 28   | NUT LOCK 3/4-10 PLT            | 803-026C | 1      | 1      |
| 29   | NUT HEX JAM 1-8 PLT            | 803-030C | 1      | 1      |
| 30   | NUT HEX TOP LOCK 1/2-13 PLT    | 803-342C | 1      | 1      |
| 31   | WASHER FLAT 1/2 USS PLT        | 804-017C | 2      | 2      |
| 32   | WASHER LOCK SPRING 5/8 PLT     | 804-022C | 4      | 4      |
| 33   | SPRING COMP 3.13OD .63W 14.0LG | 807-217C | 1      | 1      |