



TILLAGE SYSTEMS

MOUNTED

PRODUCT RANGE





Harvest Starts Here

TILLAGE

The key to a successful harvest is good preparation. Eliminating compaction in the soil to maximise the roots' uptake of moisture and nutrients is vital, as is the preparation of a fine, level, weatherproof seedbed. Whether you operate a conventional tillage or reduced tillage regime, Great Plains offers a wide range of innovative soil loosening, cultivation and consolidation equipment to suit different soil types and operating practices.

SEEDING

Consistent seed spacing and seed depth and good seed-to-soil contact are vital in your drive to maximise yields. Great Plains drills are designed and built around these fundamental principles. Our range of cultivator and air drills individually combine innovative features, field-proven technology and outstanding build quality to offer first-class seeding solutions in reduced tillage, plough-based and direct drilling regimes.

PLANTING

The accuracy of the planter is critical to the success of your operation. The planter must be able to precisely place the seed in widely varying residue and soil types. Achieving the optimum seed spacing and seed depth and good seed to soil contact are essential. Every Great Plains Yield-Pro® Planter incorporates all of the key features that enable you to produce outstanding yields season-after-season.

Mounted Tillage Equipment

Great Plains offers a wide range of innovative mounted tillage equipment including disc and tine cultivators, subsoilers, presses and rollers. Designed and manufactured around proven agronomic principles, our products provide effective solutions that meet your needs for seedbed preparation, soil loosening and consolidation. Machines are available in various working widths/depths and to suit all soil types and conditions.



CONTENTS

04/05	Company Information	16/17	Simba DD Ring
06/07	Simba DTX	17	Simba DD Lite
08/09	Simba X-Press + ST Bar	18	Simba Aqueel II Roller
10/11	Simba TL	18	Simba HD Roller
12/13	Simba Flatliner	18	Simba V-Roller
14/15	Great Plains Sub-Soiler	18	Simba Maxlift Roller
16	The need for consolidation	19	Technical Specifications

Mounted Equipment Range



DTX



X-Press



ST Bar



TL



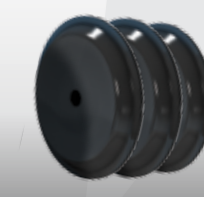
Flatliner 500



Flatliner Hydraulic Reset



Subsoiler



Consolidation Systems

Our Mission



Setting the pace through innovation

To Be a Company Where Innovation, Teamwork and a Desire to Improve Combine to:

- Delight Our Customers
- Provide a Rewarding Workplace for our Employees
- Generate Profits for Stability and Growth



"As agricultural producers, we're all aware of the increasing pressure to produce more with less. The demand for higher efficiency and increasing productivity on the farm has never been greater. At Great Plains, we listen closely to our customers. We work as a team, continually breaking new ground and innovating new products that position your operation to profit in a changing agricultural environment."

Roy Applequist. Owner, Great Plains Mfg., Inc.

FROM STRENGTH TO STRENGTH


Founded in 1976 by President and Owner Roy Applequist, Great Plains Manufacturing employs more than 1,400 people in eight Central Kansas communities and Sleaford, England. In addition to its domestic ag equipment division, which manufactures seedbed preparation, nutrient placement, and seeding equipment, Great Plains Manufacturing also includes Great Plains International, Great

Plains Trucking, Great Plains Acceptance Corporation, and its Land Pride Division that manufactures grounds maintenance tools such as mowers, tillers, rotary cutters, and snow removal equipment. The company is one of the largest and fastest growing family-owned "short line" implement companies in the United States and across the world.



 SALINA CAMPUS, SALINA, KS



 ELLSWORTH PLANT
ELLSWORTH, KS



 TIPTON PLANT
TIPTON, KS



 UK PLANT
SLEAFORD, UK



 CORPORATE OFFICE
SALINA, KS



 PRODUCT DEVELOPMENT
ASSARIA, KS



 ABILENE PLANT
ABILENE, KS



 LUCAS PLANT
LUCAS, KS



 KIPP PLANT
KIPP, KS



 PRODUCT DEVELOPMENT
ASSARIA, KS



 ENTERPRISE PLANT
ENTERPRISE, KS



 TRUCKING DIVISION
SALINA, KS

Features & Benefits



EASY DEPTH ADJUSTMENT - The depth of the rear roller can be quickly and easily adjusted to suit different ground conditions and tasks



FULL DISC ANGLE ADJUSTMENT - Easy to use, fully adjustable disc angling enables you to vary how aggressively the soil is worked. Select an acute angle for maximum mixing of stubble in one pass and a shallower angle to chop down ploughing when required.



LIMITED DISC ANGLE ADJUSTMENT - For those who farm consistent soils and do not need fully adjustable disc angling the DTX is available with limited disc angle adjustment via three fixed settings.

Designed as a mounted one-pass stubble incorporator/soil loosener for tractors in the 200-360hp range, the DTX® is extremely versatile.

It can be used in a number of different ways, for example, as a first entry machine into non-inversion tillage or to knock down ploughing, whilst loosening down to 400mm (16"). It is also ideally suited

to establishing oilseed rape straight into stubble, as it leaves a very level, fine and consolidated seedbed.

This mounted machine also offers very good trash clearance. The front tines are staggered and the fully adjustable discs can have greater or lesser angle applied to improve cultivation effect.



MODELS
DTX®
300, 300AR
350, 350AR
 (Working widths 3.0m and 3.5m)

Versatile and Cost-Effective

Consolidation

REAR ROLLER - The DTX® is available with a choice of rear rollers. Shown right, the DD 600 and DDL 600, both with shouldered press rings, consolidate the ground through to depth and leave a high quality weatherproof finish. ▶



The full range of roller options available with the DTX includes the HD Roller, V-Roller and Maxlift Roller as well as the Aqueel II, DD 600, DDL 600 (200mm spacing) and DDL 600 (150mm spacing) rollers. See pages 16, 17 and 18 for more details.

Disc Selection



TWO ROWS OF ADJUSTABLE DISCS - Mounted individually, the cultivation discs are 500mm in diameter and spaced at 250mm. Their rotational speed is far greater than more conventional discs. The Pro-Active units enhance chopping and mixing, provide effective stone protection and achieve a finer seedbed. All discs are fitted with a rotational armoured bearing housing for enhanced protection.



Pro-Active Discs

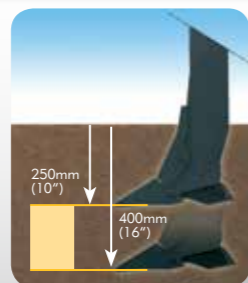
Other options include

- Full European road lighting kit

Tine Selection



PRO-LIFT LOOSENING TINES - Five Simba Pro-Lift tines are fitted as standard. Spaced at 545mm, only 20mm thick and with three wing options, they work down to 400mm with minimal draught. These tines excel in heavier soils and in conditions requiring deeper loosening.



Optional LD Tines



Options



HYDRAULIC AUTO-RESET OPTION - An optional auto-reset tine system can be specified for stoney conditions reducing downtime and increasing productivity.



SMALL SEED APPLICATOR AND FOLLOWING HARROW - When specified with the option of a Small Seed Applicator, an optional Following Harrow is also available. Ideal for OSR and cover crop establishment.

Features & Benefits

FULL DISC ANGLE ADJUSTMENT

Disc angling is fully adjustable between 0° and 25° enabling you to vary how aggressively the soil is worked and ensure good penetration.



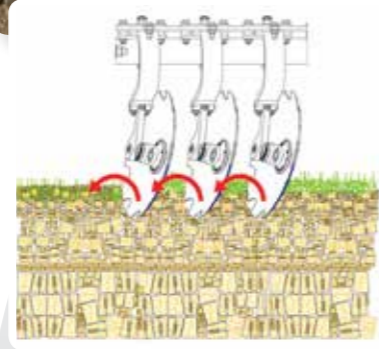
LIMITED DISC ANGLE ADJUSTMENT

The X-Press is also available with limited disc angle adjustment via three fixed settings.



EXCELLENT TRASH CLEARANCE

With a massive amount of clearance between both gangs of discs and the rear roller, the X-Press can deal easily with high volumes of trash.



THE FLEXIBILITY OF FULLY ADJUSTABLE DISC ANGLING - Individually mounted discs with tilt and adjustable angling gives you more flexibility. High angles cut and mix as a primary operation, lower angles chop and consolidate as a secondary operation. A compound disc angle including tilt reduces smear and the weight needed to penetrate.

This compact disc harrow with integrated press roll can be used without tines for a high-speed primary shallow pass to depths of between 5 and 15cms, and for incorporating stubble. The X-Press produces consistently excellent results, even in the hardest soils, using a tractor from as little as 70hp.

Add an ST Bar ahead of the X-Press and the machine is transformed into a one-pass cultivator which can restructure the soil, taking out compaction caused by harvest traffic, down to a depth of 250mms.

Use the machines separately or combined on a reduced tillage or plough-based system – that's real versatility.

MODELS

X-PRESS

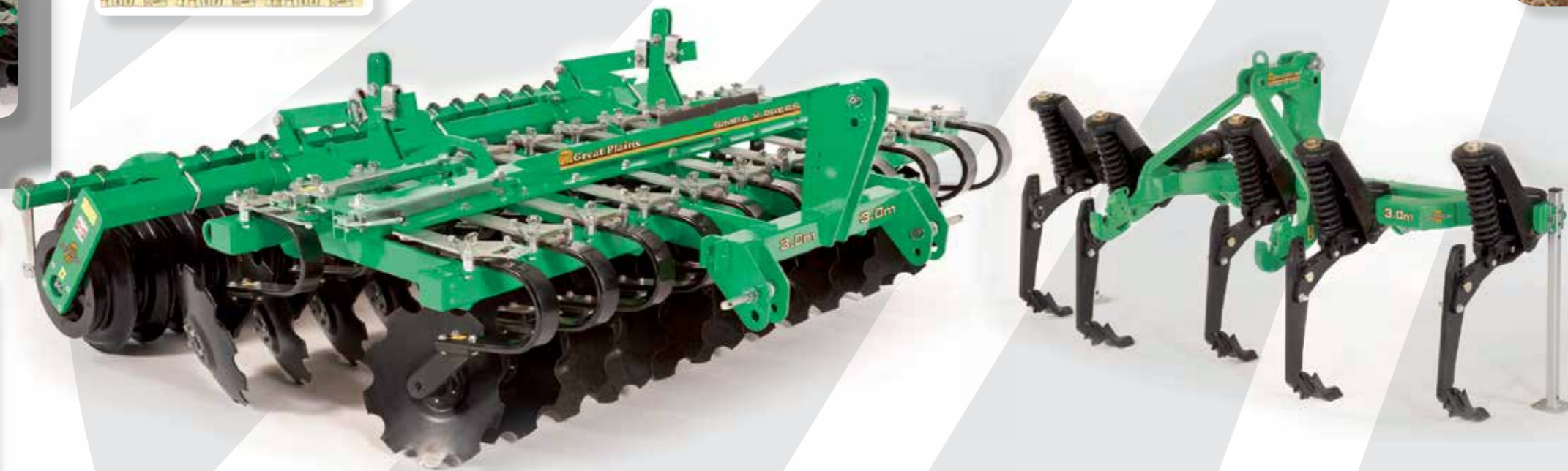
2.5, 3.0, 3.5, 4.0, 4.0FW

ST BAR

2.5, 3.0, 3.5, 4.0

(Working widths 2.5m - 4.0m)

A Winning Combination



Disc Selection



TWO ROWS OF DISCS - Mounted individually, the cultivation discs are 500mm in diameter. The disc spacing is 250mm on both front and rear gangs.

Their rotational speed is far greater than more conventional discs. Chopping and mixing is enhanced and a finer seedbed is achieved. Pro-Active disc units with a trip height of 120mm give improved protection against stone damage and improved contour following at speed. All discs are fitted with a rotational armoured bearing housing for enhanced protection.



Pro-Active Discs

Consolidation



CHOICE OF REAR ROLLER - The DDL 550 roller, with its familiar shouldered press rings, consolidates the ground through to depth, leaving a fine, corrugated, weatherproof finish. If preferred, the X-Press can be fitted with an Aqueel II Roller, Cage Roller, Heavy-Duty (HD) Roller, V-Roller or Maxlift Roller. See pages 17 and 18 for more details.



Maxlift Roller

Tine Selection



KRAFA UNIT WITH SPRING LOADED ST TINES - The ST Bar, equipped with between 4 and 7 ST tines, works the soil down to 25cms, eliminating compaction layers. The Pro-Edge point lasts up to 50% longer than other ST points and offers substantial whole life cost-savings per hectare. ST tine options include Bolt-On units and Shearbolt protection. Low Disturbance (LD) tines are also available.



Shearbolt Tine Option



Bolt-On Option



Optional LD Tines

Options

- Trailing Kit for Folding Wing (FW) model - allows a tractor from 125hp to pull the 4m machine
- Full European road lighting kit
- Small Seed Applicator available. If specified a Following Harrow is also available. Ideal for OSR and cover crop establishment.



Features & Benefits



THREE ROWS OF TINES - Ten tines on the 3.0m model and twelve tines on the 3.5m TL are staggered across three rows. The spacing between tines is 300mm and 900mm between tines on the same row.



KRAVA SPRING LOADED AUTO-RESET - Mounted on a coil spring unit the tines benefit from maximum protection against impact damage when working in stony conditions and positive engagement with the soil at all times.



EASY DEPTH ADJUSTMENT - The working depth of the tines is adjusted via the rear roller using a set of shims.



DISC LEVELLERS - Following the tines, a row of serrated sprung levelling discs chop and incorporate the surface trash and level the cultivated ground ahead of the press roller. The levellers can be extended wider than the roller to negate ridges.



SPRUNG LEVELLERS - can be specified as an alternative option to Disc Levellers



The versatile TL does it all

The TL is a linkage mounted tined cultivator designed primarily for use on lighter to medium soils. Easy to set up and use, this versatile and robust machine can work deep enough to incorporate large volumes of trash, such as potato haulm or the remains of field vegetables, or perform a thorough soil loosening action ahead of further cultivation.

Proven in extensive field trials the TL delivers outstanding

results when used for primary and secondary cultivations in the autumn. It is also highly effective for performing spring cultivations of overwintered stubbles to open them up and help them dry out and warm up ahead of spring drilling.

SIMBA TL

10 | 11

MODELS TL 300, 350
(working widths from 3.0m - 3.5m)



Consolidation



CHOICE OF REAR ROLLER - With its 'V'-shaped profile to the wheels which fill with soil in use to achieve soil-soil wearing, the V-Roller lifts soil and stays cleaner on the inside compared with similar U-shaped rollers. If preferred, the TL can be fitted with a DDL 550, Aqueel II, Cage, Heavy Duty (HD) or a Maxlift roller. See pages 17 and 18 for more details.



Cage Roller



Tine Selection



KRAVA UNIT WITH MT SPRING LOADED TINES - Simba's Krava unit with MT Spring Loaded Tines can work down to 300mm deep to incorporate large volumes of trash, such as potato haulm or the remains of field vegetables, or perform a thorough soil loosening action ahead of further cultivation. The legs are fitted with bolt-on twisted chisel points and wings. The point, wing and shin are individual components allowing operation without wings for deeper working.



Shearbolt Tine Option

◀ As an alternative to spring reset tines, shearbolt tines are available as an option.

Options include

- Full European road lighting kit

Features & Benefits



V' PROFILE TOOLBAR - Flatliner 500 and Hydraulic Reset Models. The 'V' form toolbar is designed to ensure low draft, ease of trash passage through the machine, and optimum shatter



POSITIVE DEPTH CONTROL - Positive control of working depth is provided via the rear DD ring roller



ADJUSTABLE TINE CLAMPS - Flatliner 500
- Adjustable tine clamps offer increased flexibility.



HYDRAULIC RESET SYSTEM - Flatliner Hydraulic Reset - The tines can cope with high stone content soils and varying field conditions. Each tine is hydraulic, offering a fast responsive trip and re-setting action on the move. Auto resetting pressure is adjustable. The hydraulic system is fully pressurised for minimal maintenance and wear.



Maximum Soil Shatter Minimum Surface Disturbance



The benefits of selective soil loosening should never be underestimated, particularly following a wet autumn. Healthy root growth is essential if crop yields are to remain high. Any sub-surface pans must be identified and then removed. Incorporating the latest technology from Great Plains, the Simba Flatliner offers the perfect solution.

A choice of two ranges provide maximum shatter of deeply embedded

compaction layers with minimum surface disturbance across the working width. Flatliner Hydraulic Reset models are ideal for use in stony conditions. The Flatliner 500 series, with standard shear bolt protection on the tines, includes a folding model capable of working down to 500mm.

Flatliners feature low draft and a consolidating rear roller.

MODELS **FLATLINER HYD RESET**
3.0*, 3.5, 4.0, 4.5

*Available with 3 or 5 Tines

FLATLINER 500
3.0, 3.5, 3.8, 4.2, 4.2HD, 4.5
(Working widths 3.0m - 4.5m)

Consolidation



DD 600 REAR ROLLER
- The patented and well-proven 600mm diameter DD rear roller provides positive depth control and leaves a high quality corrugated, weather-proof surface. The roller is equipped with heavy-duty scrapers.

Options

- Tine assembly complete with clamp and point
- Front mounted depth wheels 11.5/80-15 fully adjustable
- HD Chassis (4.2m) for 300 to 400hp
- Small Seed Applicator (excludes 4.5FW model) is available. When Small Seed Applicator is specified a Following Harrow is also available. Ideal for OSR and cover crop establishment.
- Full European road lighting kit



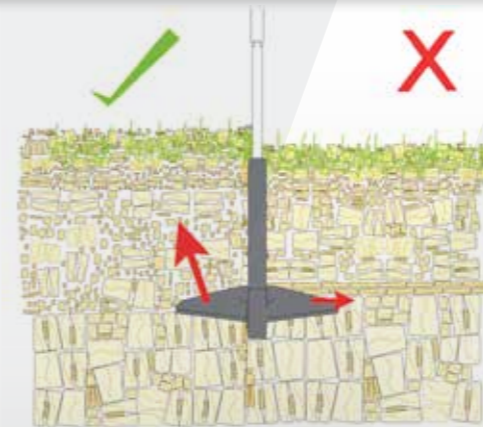
Tine Selection



PRO-LIFT LOOSENING TINES - The Pro-Lift leg and point provide a very effective soil conditioning action with prolonged wear rates. The tines can work down to depths of 350mm in the Hydraulic Reset models and down as far as 500mm in the 500 Series and Folding Flatliner.



CHOICE OF WINGS - A choice of three different wings - each imparting a different degree of lift - enables the amount of work completed to be matched to the prevailing soil conditions and moisture levels.



The Pro-Lift Loosening Tine lifts and loosens the soil above it, reducing bulk density and compaction, whilst minimising disturbance at the surface. Overall soil flow should be UPWARDS (as shown left of centre) rather than outwards or smearing downwards (as shown right of centre). Tines that move the soil SIDEWAYS will not remove compacted layers and may even make them worse.



LD Tine available as an option on Flatliner 500 models



Eliminates Compaction Layers

MODELS SUB-SOILER SS300
(working width 3.0m)



TRIP RESET - All tines come with shear bolts as standard. The auto-reset version has a 1360kg horizontal trip force.



ADJUSTABLE GAUGE WHEEL - A screw jack makes adjusting the gauge wheel a quick and simple task.



500mm UTILITY COULTERS - A coulter runs ahead of each tine to cut residue and reduce plugging.



HEAVY-DUTY HINGES - Reinforced large-diameter greaseable pivot pins and extra heavy steel gussets mean the wings can take as much abuse as the center section.



The Great Plains Sub-Soiler is a vertical tillage tool that can be used in conventional, reduced tillage or no-till farming systems.

In conventional tillage regimes it can eliminate the compaction layers created by the plough, disc harrow or cultivator, which can adversely affect yields and form a barrier to essential moisture.

In a no-till environment, the Sub-Soiler can first be used as a preparatory tool and then as a maintenance tool. Prior to phasing-in no-till, repairing the soil structure with the Sub-Soiler can help to protect yields.

As well as maintaining a uniform soil structure, sub-soiling helps to keep soil organisms, such as worms, alive and reduces surface compaction from tractors and combines.

AGRONOMY



The Sub-Soiler shatters the soil over the full width of the machine through lifting and resetting of the entire profile. The tines, arranged in a straight line to shatter horizontally between them, should be set 30-50mm below the plough pan to achieve best results.



Once the working depth has been determined, the gauge wheel is set to prevent the Sub-Soiler from losing its pre-set depth. It runs ahead of the tip to control the depth even in undulating conditions.

Options



Berm Conditioner



No-Till Point



Transport Mode

Tine Selection



AUTO RESET TINE - This 19mm thick spring steel tine, with its exclusive 250mm no-till point, provides maximum soil shatter with minimum surface disturbance. It will leave more than 90% of crop residue on the surface.



STRAIGHT TINE - This shear bolt protected tine with either 50mm or 175mm point provides good fracture under the surface but will give more surface disturbance. A no-till point is available with the straight tine where minimal surface disturbance is required.



The need for consolidation

Effective consolidation plays a crucial, but often under-appreciated part in modern arable farming. As part of a reduced tillage regime, it can save valuable time, reduce costs and increase yields. Fundamentally, it plays a key role in combating the problem of compaction, which is a barrier to root growth and water infiltration and a major factor in poor soil structure leading to run-off and erosion.

Pioneers in Consolidation technology

With many years of experience in developing innovative roller technology, Great Plains offers a range of components that are proven to produce excellent results on a wide range of soil types and ensure users achieve the full benefits of good consolidation. These include:

- Effective soil to seed/root contact to enable efficient nutrient transfer
- Minimal moisture loss, especially important in dry years where crops which lack moisture suffer badly
- Improved drainage and water infiltration, especially important in wet years where a good, consolidated soil structure ensures access to plant root systems for water, air and nutrients
- Reduced soil erosion, as the soil is both structured and stable - an essential consideration for farmers

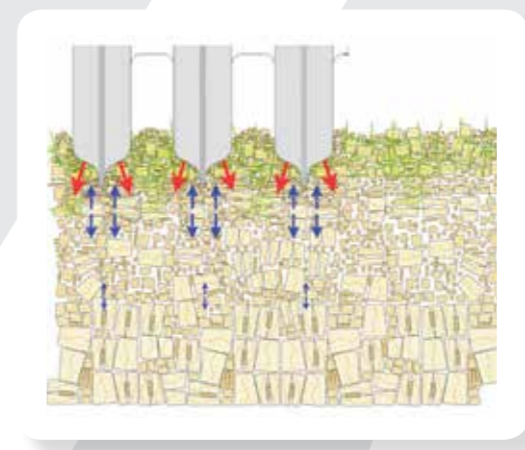
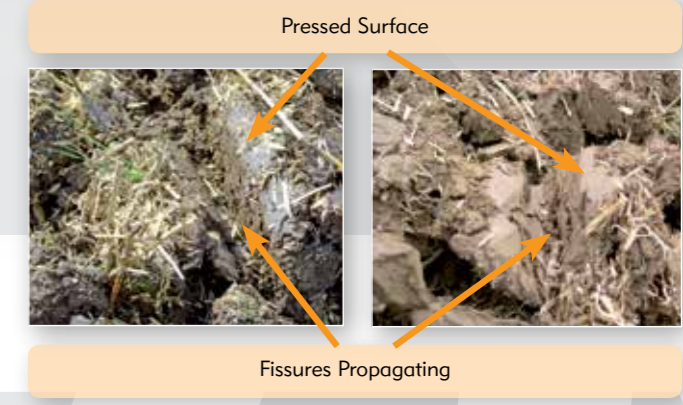


DD Effect



Clods are cut and fissures propagate through a result of the DD action, Broken or cracked clods are left in an ideal state for further weathering

Manufactured from the highest quality Boron steel, the rings have a self-sharpening cutting edge mounted on a broad, carefully angled shoulder. This enables them to cut clods effectively, crushing the parted halves so they disintegrate, while also contacting over 80% of the soil surface so they consolidate and level the seedbed, leaving a ridged, weather-proof surface.



DD Ring

Setting the standard for press efficiency

Widely accepted as one of the best consolidation systems capable of working in all soil types, Great Plains Simba DD Press Rings set the standard for pressing efficiency and remain unique both in their patented design and their performance.



DD Rings are available in diameters of 600mm (DD600 – pictured left) and 700mm (DD700). DD Lites are available in diameters of 550mm (DDL550) and 600mm (DDL600 – pictured above)

MACHINES AVAILABLE WITH DD REAR ROLLER

DTX (as an option). See Pages 6 & 7
Flatliner (as standard). See Pages 12 & 13

DD Lite

Light consolidation with mounted machines

Ideal for mounted machines on lower hp tractors, the DD Lite is available in 550mm and 600mm diameters. Lighter in weight, the DD Lite shares the same unique features of the DD Ring including the unique axle tensioning system with steel spacers between the rings, which allows the roller to 'self-adjust' as it wears, maintaining its effectiveness.

MACHINES AVAILABLE WITH DD LITE AS A REAR ROLLER OPTION

DTX - see pages 6 & 7
X-Press - see pages 8 & 9
TL - see pages 10 & 11



These pictures show a typical DDL 600 surface tilth, ideal for seeding onto and surface rolling after.

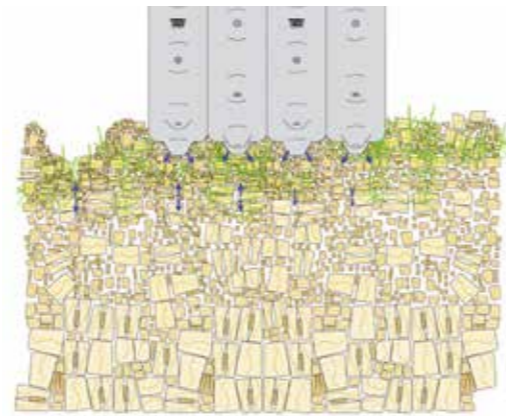
AQUEEL II

Consolidates the seedbed protects against erosion

The Great Plains Simba Aqueel II enables farmers to consolidate seedbeds after drilling and optimise crop performance. It minimises moisture loss, facilitates improved drainage and water infiltration and ensures excellent soil to seed/root contact, while also protecting soil against erosion at a time when it generally has no green cover and is at its most vulnerable.

The Aqueel II helps to conserve moisture in two distinct ways.

1. It presses a lattice of small indentations in the soil surface creating small reservoirs which prevents lateral water movement
2. The roller can be used immediately after drilling to maximise moisture conservation



Unique design creates water retaining 'saucers'

Durable rubber teeth are fixed to a rubber carcass. As well as crushing clods, these teeth press small reservoirs in the soil that catch water and retain it on the seedbed, preventing it from running off and carrying valuable soil, residual chemicals and nutrients with it. The saucers with their central divot do not inhibit emergence – plants emerge straight through them.

MACHINES AVAILABLE WITH AQUEEL II AS A REAR ROLLER OPTION

DTX - see pages 6 & 7
X-Press - see pages 8 & 9
TL - see pages 10 & 11



HD ROLLER

This cost-effective, durable, fully welded steel roller with 'zone' consolidation is designed for minimal maintenance. It is ideal for use in rough ground conditions and soils with high stone content.

V-ROLLER

With its 'V' shaped profile to the wheels which fill with soil in use to achieve soil-soil wearing, the V-Roller lifts soil and stays cleaner on the inside compared with similar U-shaped rollers. This roller works well with or without scrapers, depending on the conditions. Light in weight, it enables the use of smaller tractors with mounted machines.

MAXLIFT ROLLER

A combination of notched wheels and teeth for driving and lifting high volumes of soil, the Maxlift Roller gives a fine finish whilst still consolidating the ground just below the surface. This roller achieves a good mixing effect at high speed.

MACHINES AVAILABLE WITH HD, MAXLIFT AND 'V' ROLLERS AS A REAR ROLLER OPTION

DTX - see pages 6 & 7
X-Press - see pages 8 & 9
TL - see pages 10 & 11

X-Press and TL also available with the Cage Roller as a further option

MOUNTED TILLAGE EQUIPMENT Product Specifications



SIMBA DTX						
Model	Working Width (m)	Transport Width (m)	No. of Tines	Guide Weight (kg)	Guide Weight (kg) Auto Reset (AR)	Power Req (hp)
DTX® 300/300AR	3.0	3.0	5	2,830	2,997	200-360
	3.0	3.0	5	2,953	3,120	200-360
	3.0	3.0	5	2,766	2,933	200-360
DTX® 350/350AR	3.5	3.5	6	3,344	3,482	200-360
	3.5	3.5	6	3,477	3,615	200-360
	3.5	3.5	6	3,233	3,371	200-360



SIMBA X-PRESS					
Model	Working Width (m)	Transport Width (m)	No. of Discs	Guide Weight (kg)	Power Req (hp)
XP 2.5	2.5	2.50	18	1,525	70-110
XP 3.0	3.0	3.00	22	1,750	80-120
XP 3.5	3.5	3.50	26	2,125	90-150
XP 4.0	4.0	4.00	30	2,440	110-170
XP 4.0*	4.0*	2.98	32	2,920	125-180

* Folding Wing model



SIMBA ST BAR					
Model	Working Width (m)	Transport Width (m)	No. of Tines	Guide Weight (kg)	Power Req (hp) with Mntd X-Press
ST 2.5	2.5	2.08	4	470	145
ST 3.0	3.0	2.64	5	560	180
ST 3.5	3.5	3.18	6	690	200
ST 4.0	4.0	3.58	7	750	220



SIMBA TL					
Model	Working Width (m)	Transport Width (m)	No. of Tines	Guide Weight (kg)	Power Req (hp)
TL300	3.0	3.0	10	1,750/2,000	120-200
TL350	3.5	3.5	12	2,250/2,600	140-200



SIMBA FLATLINER HYDRAULIC RESET					SIMBA FLATLINER 500				
Model	Working Width (m)	Transport Width (m)	No. of Tines	Power Req (hp)	Model	Working Width (m)	Transport Width (m)	No. of Tines	Power Req (hp)
FLHR 3.0	3.0	3.0	3	110-160	FL500 3.0	3.0	3.0	3	130-180
FLHR 3.0	3.0	3.0	5	130-180	FL500 3.5	3.5	3.5	5	140-240
FLHR 3.5	3.5	3.5	5	130-180	FL500 3.8	3.8	3.8	5	140-240
FLHR 4.0	4.0	4.0	5	140-190	FL500 4.2/HD	4.2/4.2HD	4.2/4.2HD	7	190-310
FLAR 4.5	4.5	3.0	7	210-360	FL500 4.5	4.5	3.0	7	210-360



GREAT PLAINS SUB-SOILER					
Model	Working Width (m)	Transport Width (m)	No. of Tines	Tine Spacing (mm)	Power Req (hp)
SS300	2.1-2.5	3.0	3	700 or 750	150 - 240
	2.8-3.0	3.0	4	700 or 750	200 - 320
	3.4-3.5	3.0	5	680 or 700	250 - 400
	3.2-3.4	3.0	6	540 or 560	300 - 480

All working widths and guide weights are approximate depending on the machine configuration and settings.



Make Ownership a Reality

Ask your Dealer for details of competitive part-exchange deals and tailored finance options.

DEALER STAMP



Great Plains UK Ltd.,
Woodbridge Road, Sleaford,
Lincolnshire. NG34 7EW. England
Tel: +44 (0)1529 304654 **Fax:** +44 (0)1529 413468
E-Mail: simba@greatplainsmfg.com
www.greatplainsmfg.co.uk

Great Plains International,
1525 East North Street,
Salina, Kansas 67401-5060 USA
Tel: +1-785-823-3276 **Fax:** +1-785-822-6722
E-Mail: gpi@greatplainsmfg.com
www.greatplainsint.com

Great Plains UK Limited, reserves the right to vary specifications with or without notice at such times and in such a manner as deemed appropriate. Major as well as minor changes may be involved. Every effort, however, is made to ensure the accuracy of the particulars contained in this brochure. Consult your Great Plains Dealer for details regarding the specifications of any product. All sales are made by the Distributor or Dealer subject to and with the benefit of the Standard Conditions of Sale and Warranty provided by the Distributor or Dealer, copies of which may be obtained on request.