

Installation Instructions



4000-3S Marker Option

Used with:

- 4000-3S 40' 3-Section Drill



When you see this symbol, the subsequent instructions and warnings are serious - follow without exception. Your life and the lives of others depend on it!

General Information

These instructions explain how to install the marker option. The markers fold and unfold hydraulically for field operation. The marker disk leaves a line for the drill operator to follow on the next field pass. Markers are mounted on the drill frame and require two hydraulic remote valves on the tractor. A sequence valve is available so markers can be operated on one hydraulic circuit.

These instructions apply to:

113-708A	4000-3S Single Marker Bundle
113-707A	4000-3S Dual Marker Bundle
113-048A	3S-4000 RH Marker Package

Manual Information

Refer to the 4000-3S operator's manual for detailed information on safely operating, adjusting, troubleshooting and maintaining the marker option. Refer to the parts manual for part identification.

195-242M	4000-3S Operator's Manual
195-242P	4000-3S Parts Manual

Before You Start

Beginning on page 12 is a detailed listing of parts included in the marker option package. Use this list to inventory parts received.

Assembly Instructions

NOTE: If installing right hand marker to drill already equipped with left hand marker, follow instructions listed under "Dual Marker."

Refer to Figure 1

1. Lower drill into field position. Allow 25 feet on each end of drill for marker assembly. Always assemble marker in unfolded position.

2. Mount first marker section (1) on drill frame tube (2) as shown. Secure with four 5/8" x 6" x 7 3/4" U-bolts (3), 5/8" lock washers (4) and 5/8" nuts (5).

NOTE: Mount the marker as far out on the frame as possible.

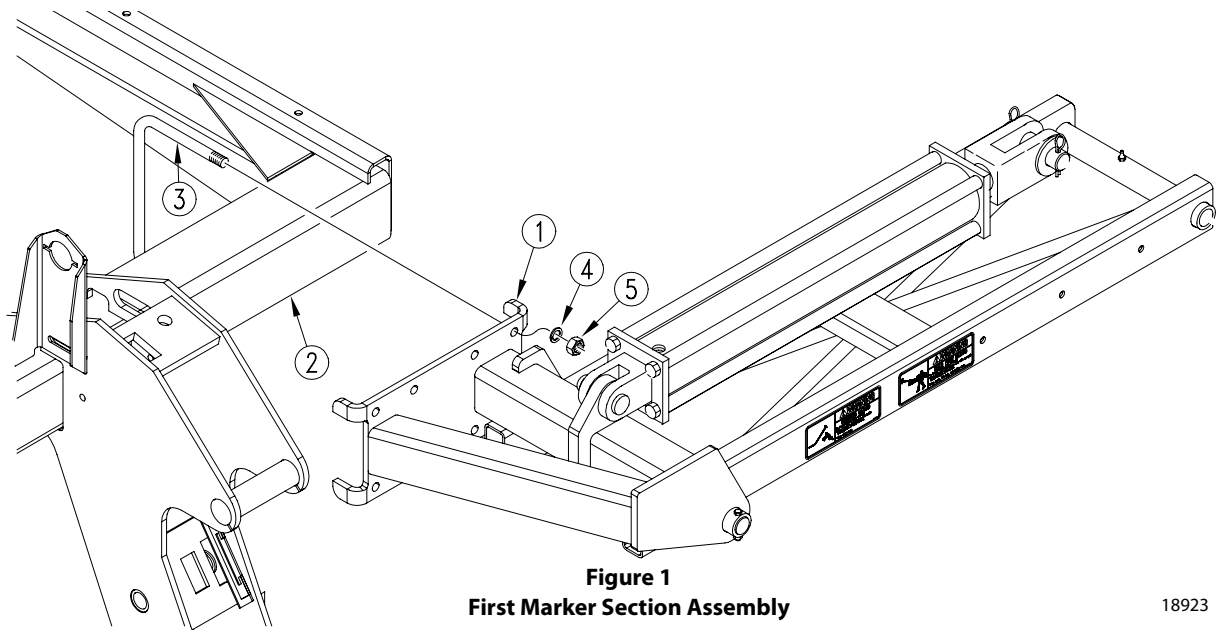


Figure 1
First Marker Section Assembly

18923

2 | Marker Option

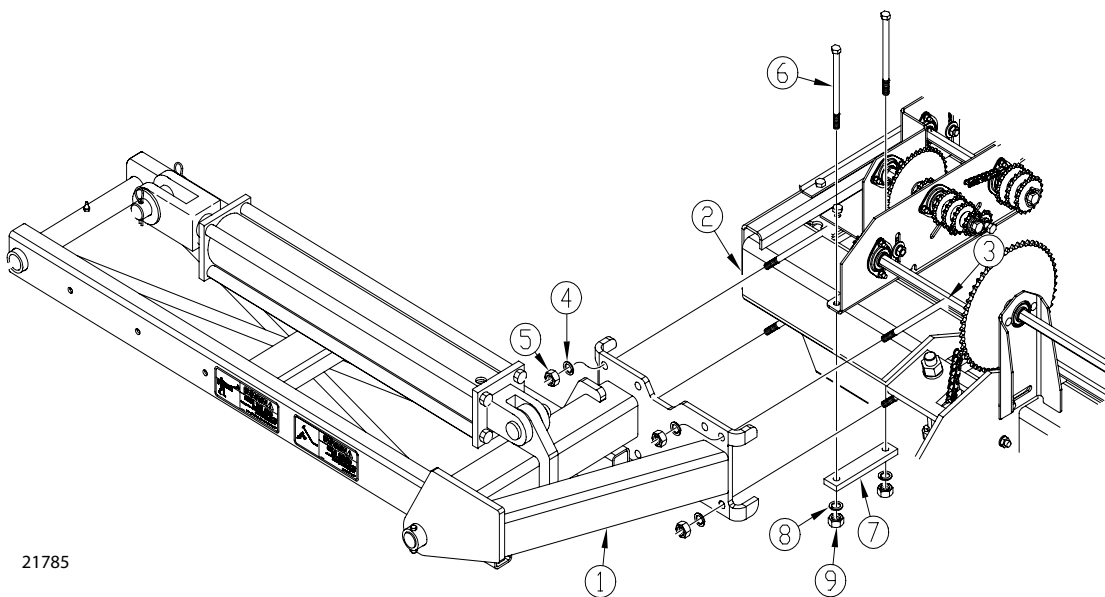
Note: For drills with a fertilizer drive use the following instructions for mounting the first marker section to the right-hand side of the drill.

Refer to Figure 2

3. Remove the 1/2" U-bolt located on the front of the fertilizer drive mounting plate. Keep the lock washers and nuts for later use.
4. Mount first marker section (1) on drill frame tube (2) as shown. Secure with four 5/8" x 6" x 7 3/4" U-bolts (3), 5/8" lock washers (4) and 5/8" nuts (5).

NOTE: Mount the marker as far out on the frame as possible.

5. Insert the two 1/2" x 7 1/2" bolts (6) through the holes in the fertilizer drive mounting plate where the U-bolt was removed.
6. Install the clamp bar (7) as shown and secure in place with 1/2" lock washers (8) and 1/2" nuts (9) removed in step 3.



21785

Figure 2
Right-hand First Marker Section with Fertilizer Drive

Refer to Figure 3

7. Assemble second marker section (6) to first marker section (1) with 20 5/8" hinge pin (7). Fasten with 5/16" x 2 1/4" bolt (8) and 5/16" lock nut (9).

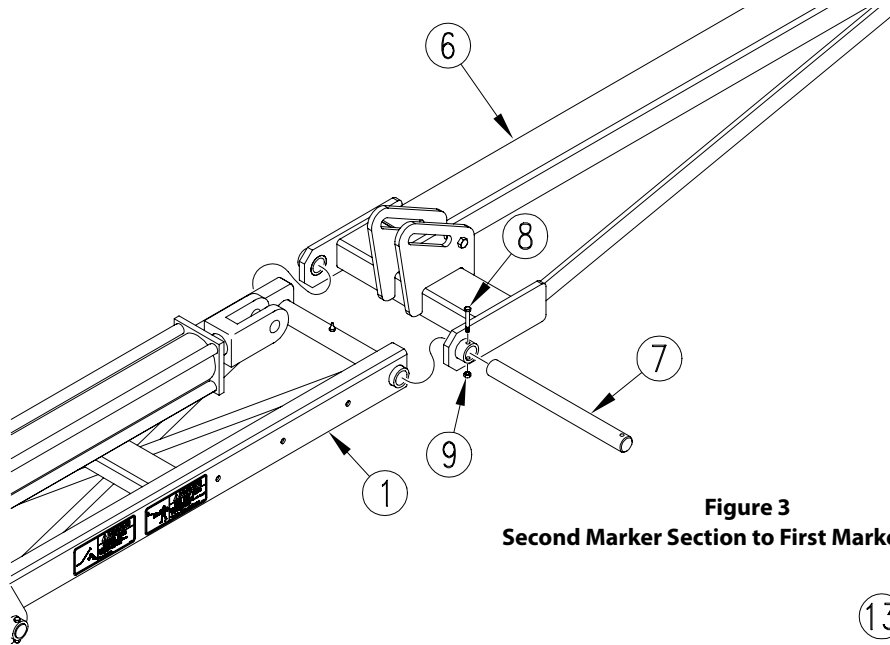


Figure 3
Second Marker Section to First Marker Section

Refer to Figure 4

8. Attach cylinder rod end to second marker section with clevis pin (10), flat washers (11) and cotter pin (12).

NOTE: Make sure cylinder pin lock (13) is positioned under cylinder clevis pin (10).

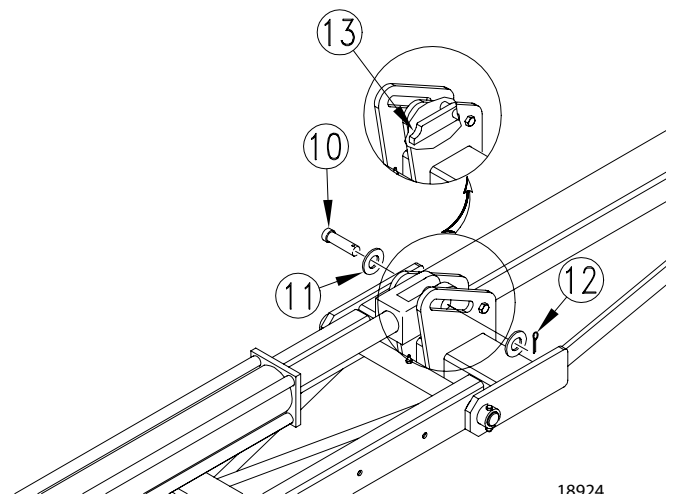


Figure 4
Cylinder Rod End to Second Marker Section

18924

4 | Marker Option

Refer to Figure 5

1. Assemble third marker section (14) to second marker section (19) with 5/8" x 5" bolt (15) and 5/8" nut lock (16). After hinge bolt is installed, take as much play out of the assembly by tightening both hinge bolt (15) and middle clamp bolt (17). Stop tightening both bolts when all the play has been removed. Do not over tighten. Check to make sure arm (14) can be rotated by hand. Secure opposite side with 7/16" x 2" bolt (17) and 7/16" nut hex lock (18).

NOTE: The 7/16" bolt (17) is the marker break away bolt.

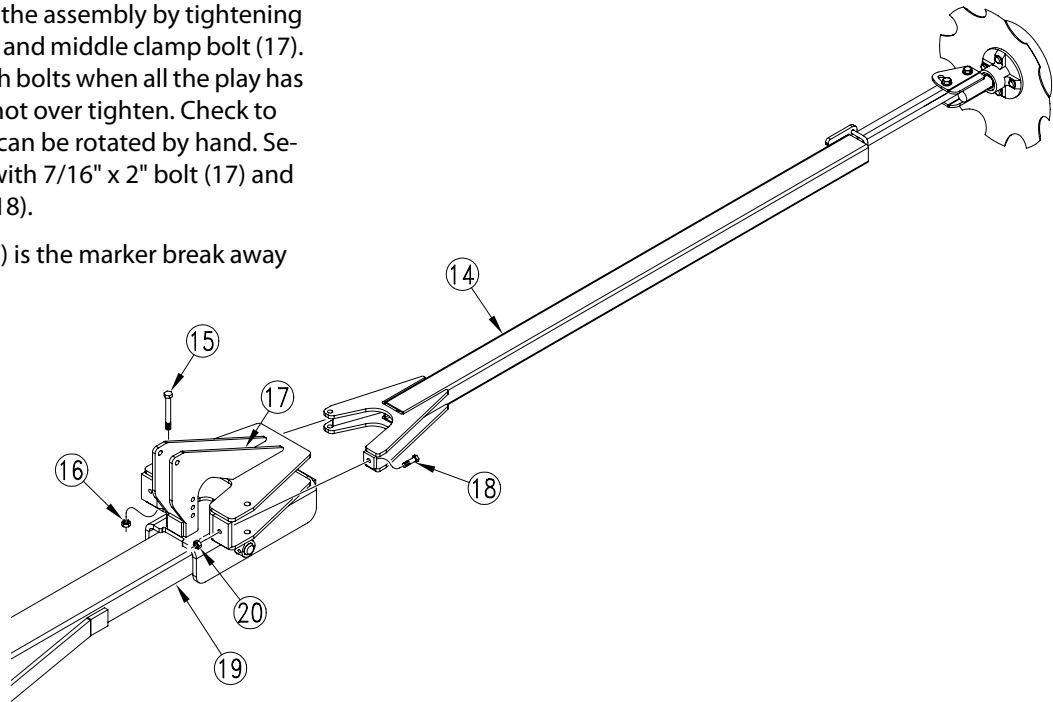


Figure 5
Third Marker Section to Second Marker Section

23204

Refer to Figure 6

2. Attach bumper (21) to marker rest bracket (22) with a 1/2" x 3/4" bolt (23) and 1/2" lock washer (24).
3. Attach marker rest bracket (22) to second marker section (6) with 3/8" x 6" bolts (25) and 3/8" lock nuts (26).

NOTE: The 34 inch dimension shown is from the center of the hinge pin to the inner edge of rest bracket.

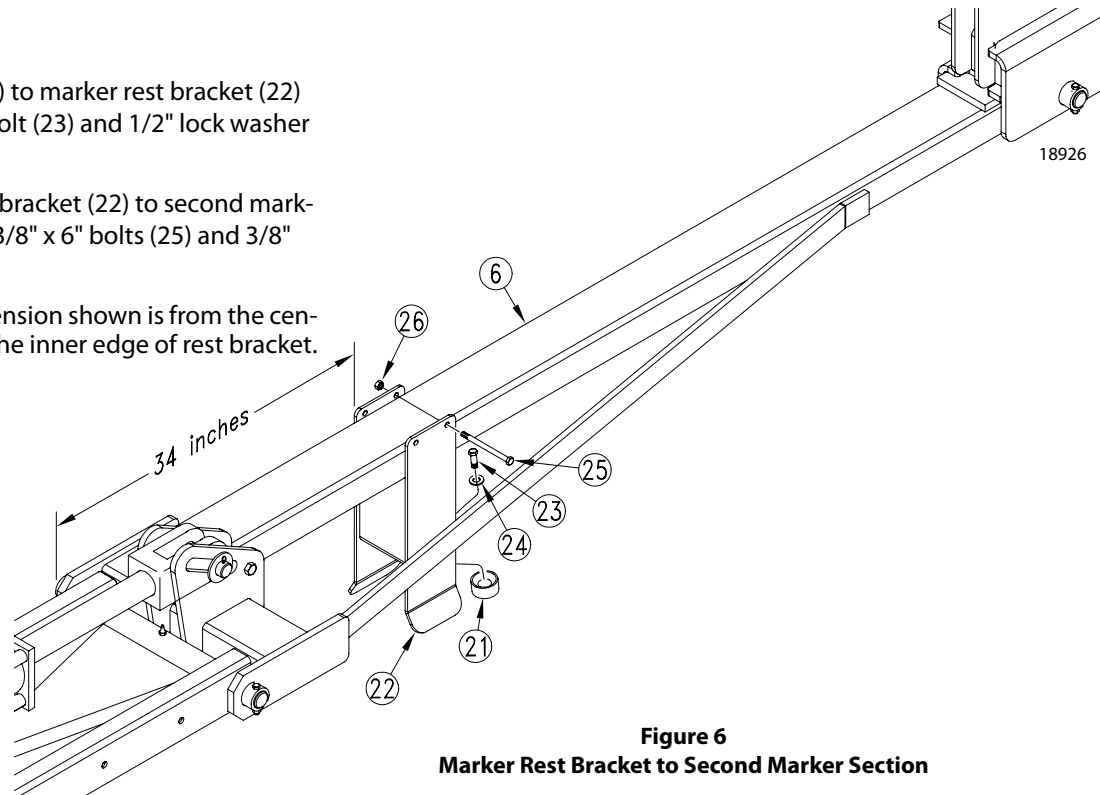


Figure 6
Marker Rest Bracket to Second Marker Section

Refer to Figure 7

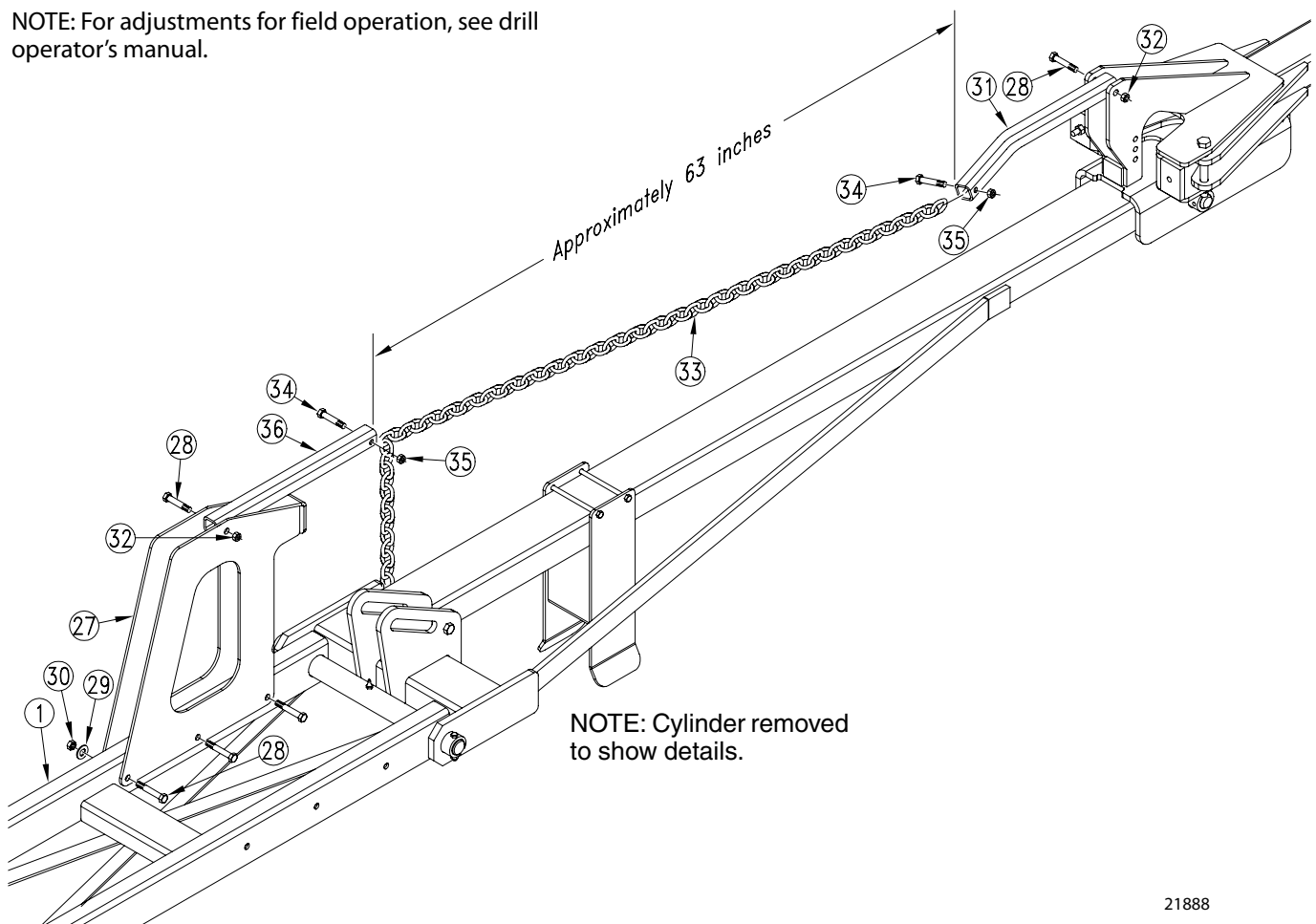
4. Attach transport brace (27) to first marker section (1) with 1/2" x 3 1/4" bolts (28) 1/2" lock washers (29) and 1/2" lock nuts (30).
5. Assemble lift arms (31) and (36) to the transport brace and second marker section as shown. Fasten with 1/2" x 3 1/4" bolts (28) and 1/2" lock nuts (32).

NOTE: Make sure the curved end of arm (31) is facing down as shown.

IMPORTANT: Do not overtighten. The lift arms must be able to swivel in their mounts.

6. Attach chain (33) to lift arms with 3/8" x 2 1/2" bolts (34) and 3/8" lock nuts (35) to a length of approximately 63" as shown.

NOTE: For adjustments for field operation, see drill operator's manual.



21888

Figure 7
Transport Brace and Marker Chain Assembly

6 | Marker Option

Marker Carrier Assembly*Refer to Figure 8*

1. Attach marker carrier mount (1) to drill frame with 1/2" x 6" x 7 1/4" U-bolts (2), 1/2" lock washers (3) and 1/2" nuts (4). Center carrier mount 69" from the outside end of drill frame.
2. U-bolt marker carrier (5) to carrier mount so top of saddle surface (6) is about 41 7/8" above top of drill frame tube. Secure marker carrier with 1/2" x 3" x 4" U-bolts (7), 1/2" lock washers (3) and 1/2" nuts (4).

When folded, the second marker section should rest in marker carrier saddle. After installing and bleeding the hydraulics, marker carrier may require further adjustment. Refer to *Marker Adjustments* in the drill operator's manual.

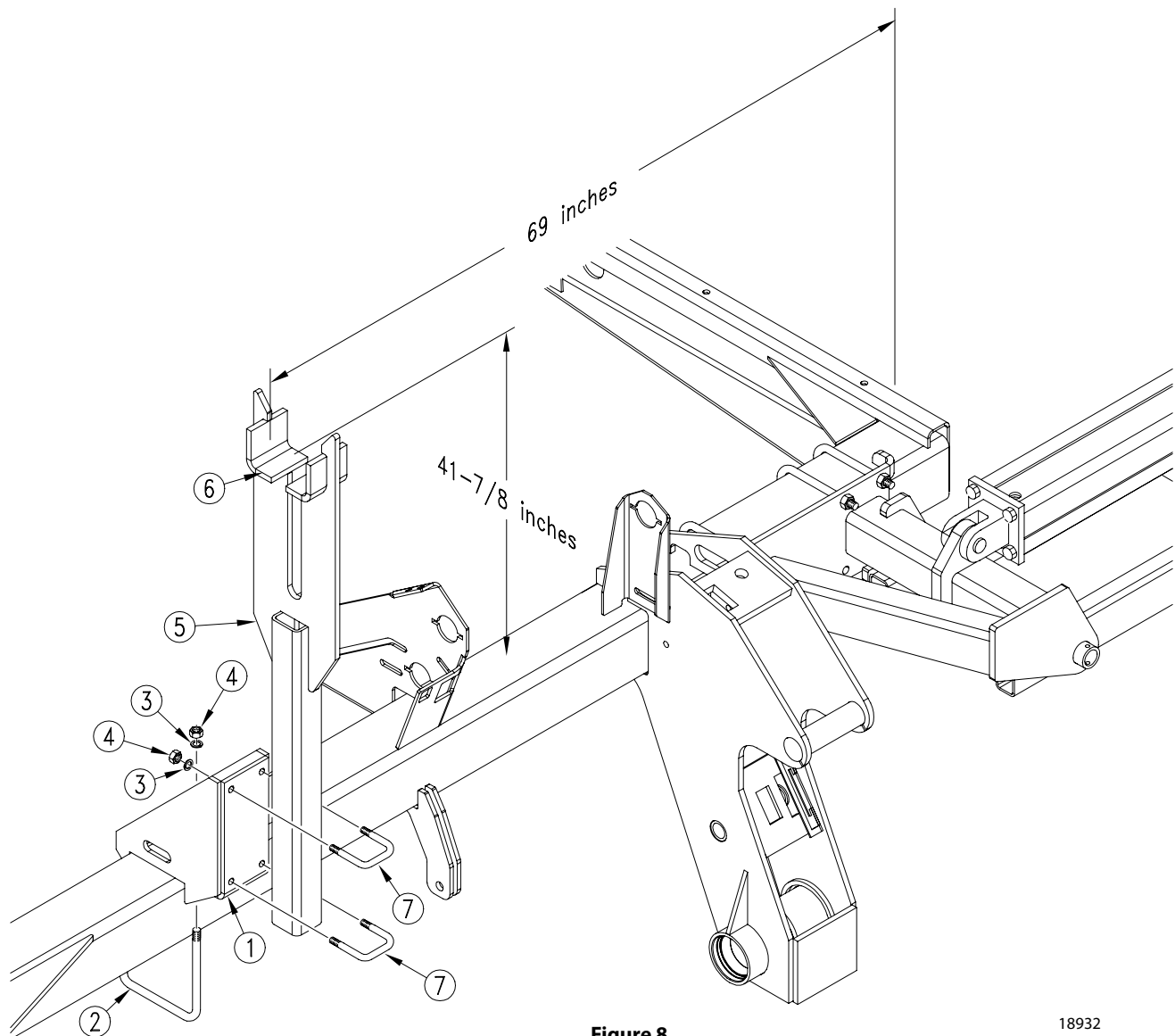


Figure 8
Marker Carrier Installation

18932

Hydraulics Assembly

Single Marker

Refer to Figure 9

1. Install elbow fittings (1) in cylinder ports.
2. At rod end of each cylinder, install a 3/8" MNPT adaptor (2) into elbow fitting. Install a needle valve (3) into adaptor and a 3/8" MNPT x 9/16" MJIC adaptor (4) into the needle valve.
3. Assemble 270" hose (5) to base end elbow fitting and 290" hose (6) to rod end elbow fitting.
4. Route hoses through marker carrier mount at cutout. Then route the hoses along the same path as opener lift hoses, allowing the same slack at drill toolbar pivots.
5. Assemble 9/16" MJIC adapters (7) to hoses (5 & 6). Assemble the 408" long hoses (8) to adapters.
6. Lay hoses flat along tool bars. Tie hoses down with plastic cable ties to prevent pinching or kinking during folding.
7. Proceed with "Bleeding Marker Hydraulics", page 11.

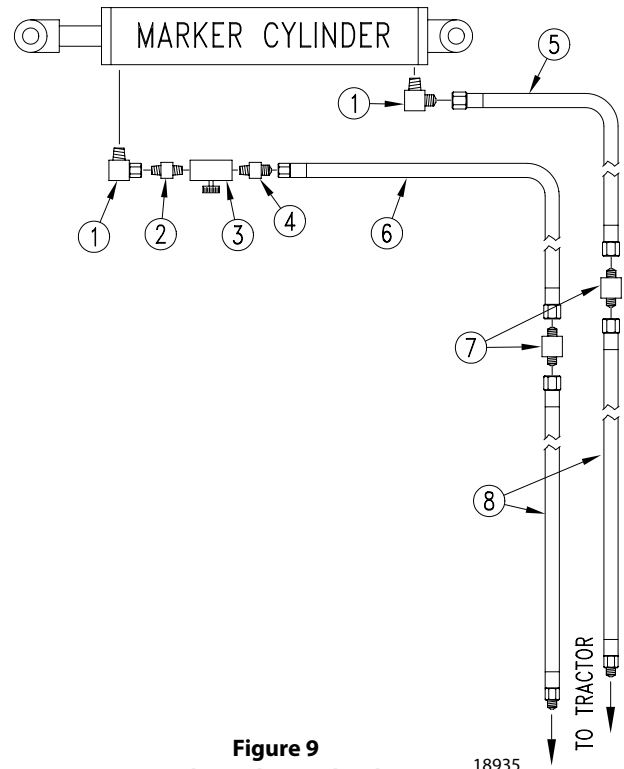


Figure 9
Single Marker Hydraulics

Single Marker With Selector Valve

Refer to Figure 10

1. Mount selector valve (1) to valve mounting plate (2) with 3/8" x 3 1/4" bolts (3), 3/8" lock washers (4) and 3/8" nuts (5).

Refer to Figure 11 on page 8

2. Install elbow fittings (6) in cylinder ports.
3. At rod end of marker cylinder, install a 3/8" MNPT adaptor (7) into elbow fitting. Install a needle valve (8) into adaptor and a 3/8" MNPT x 9/16" MJIC adaptor (9) into the needle valve.
4. Assemble 270" hose (10) to base end elbow fitting and 277" hose (11) to rod end elbow fitting.
5. Route hoses through marker carrier mount at cutout. Then route the hoses along the same path as opener lift hoses, allowing the same slack at drill toolbar pivots.
6. Attach adapters (12) to hoses (10 & 11). Assemble the 408" long hoses (13) to adapters.
7. Attach adapters (14) to front and rear ports, and elbows (15) to cross ports of selector valve (1).
8. Assemble hoses (13) to rear ports of selector valve. Assemble hoses (16) from fold cylinders to front ports of selector valve.
9. Assemble hoses (17) to elbows (15) on selector valve.

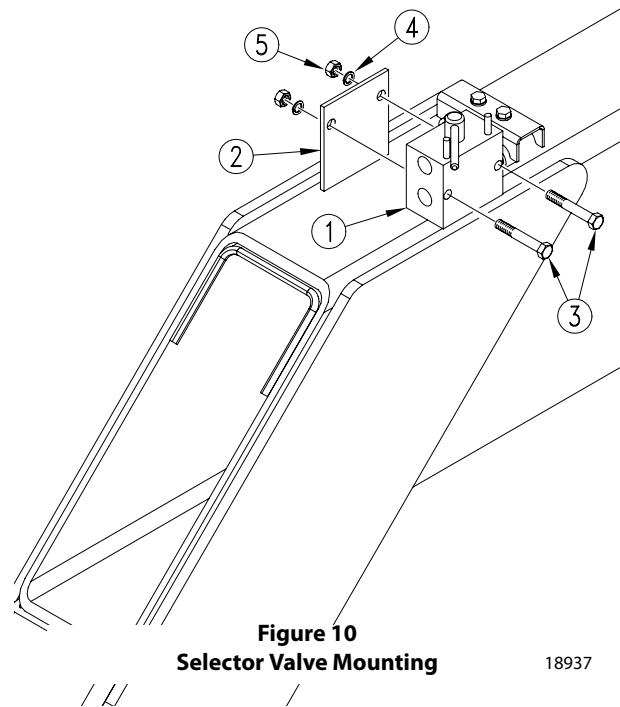
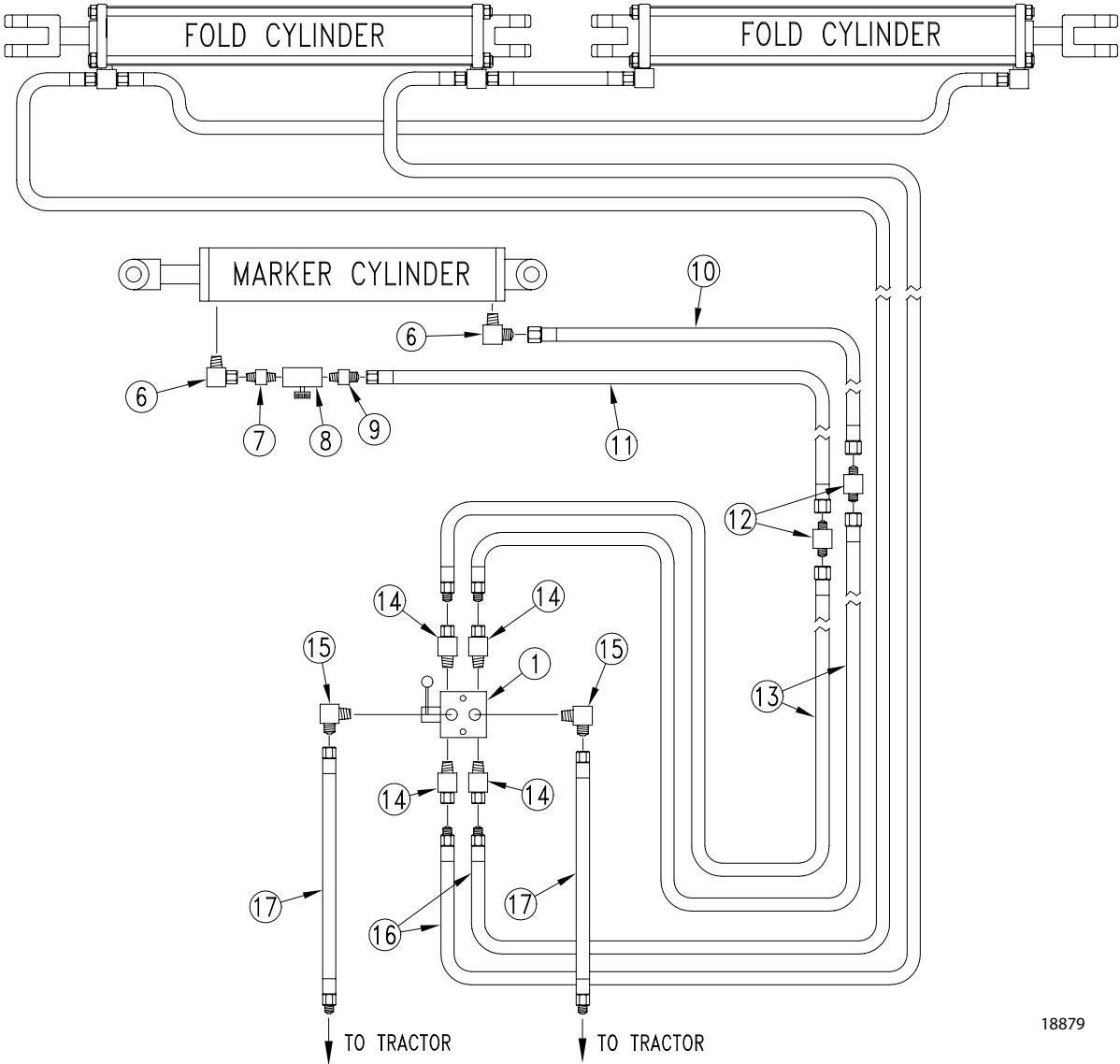


Figure 10
Selector Valve Mounting

10. Lay hoses flat along tool bars. Tie hoses down with plastic cable ties to prevent pinching or kinking during folding.
11. Proceed with "Bleeding Marker Hydraulics", page 11.

8 | Marker Option



18879

Figure 11
Single Marker Hydraulics with Selector Valve

Dual Marker*Refer to Figure 12*

1. Mount sequence valve (1) to bracket (2), at rear of tongue, with 3/8" x 3/4" bolts (3) and lock washers (4).

Refer to Figure 13

2. Install elbow fittings (5) in cylinder ports.
3. Attach 270" hoses (6) to base end elbow fittings. Attach 290" hoses (7) to the cylinder rod end elbow fittings.
4. Route hoses through marker carrier mount at cutout. Then route the hoses along the same path as opener lift hoses, allowing the same slack at drill toolbar pivots.
5. Connect hose from base end of left marker cylinder to elbow, then to port R1 on sequence valve (2). Connect hose from base end of right marker cylinder to elbow, then to port R2.
6. Connect hose from rod end of left marker cylinder to elbow, then to port C1. Connect hose from rod end of right marker cylinder to elbow, then to port C2.
7. Connect 408" hoses (8) to adapters at the front of the sequence valve. Route hoses through tongue.
8. Lay hoses flat along tool bars. Tie hoses down with plastic cable ties to prevent pinching or kinking during folding.
9. Proceed with "Bleeding Marker Hydraulics", page 11.

Dual Marker With Selector Valve

1. To mount selector valve, refer to "Single Marker With Selector Valve" step 1, page 7.
2. Mount marker sequence valve, refer to "Dual Marker" step 1.

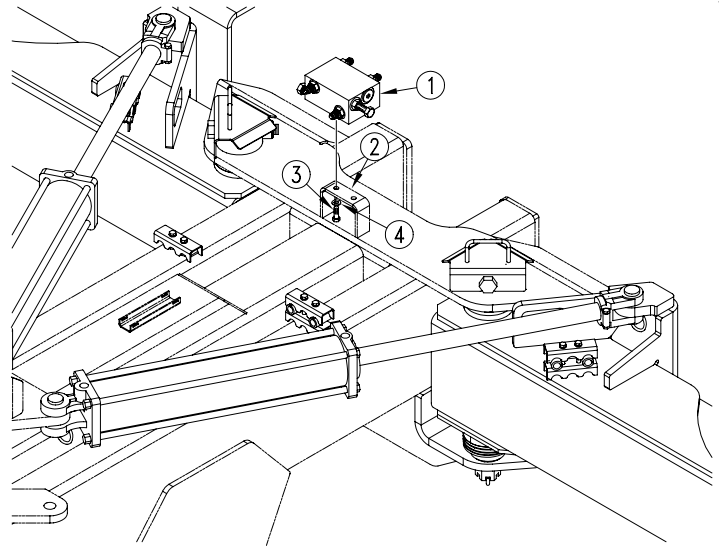


Figure 12
Sequence Valve Mounting

18933

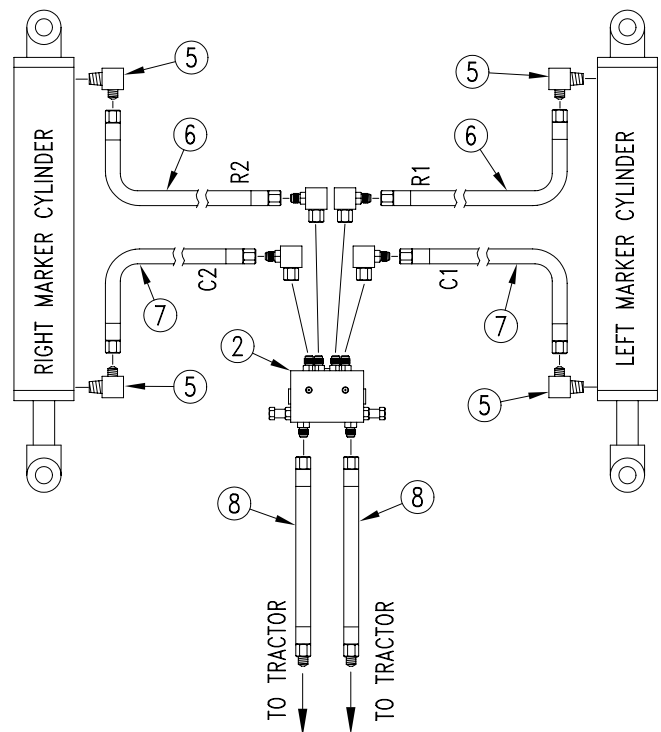


Figure 13
Dual Marker Hydraulics

18936

10 | Marker Option

Refer to Figure 14

3. Install elbow fittings (6) in cylinder ports.
4. Assemble 270" hoses (8) to base end elbow fitting and 277" hose (7) to rod end elbow fitting.
5. Route hoses through marker carrier mount at cut-out. Then route the hoses along the same path as opener lift hoses, allowing the same slack at drill toolbar pivots.
6. Connect hose from base end of left marker cylinder to port R1 on sequence valve (2). Connect hose from base end of right marker cylinder to port R2.
7. Connect hose from rod end of left marker cylinder to port C1. Connect hose from rod end of right marker cylinder to port C2.
8. Connect 408" hoses (9) to adapters at the front of the sequence valve. Route hoses along center of tongue.
9. Attach adapters (10) to front and rear ports and elbows (12) to cross ports of selector valve (11).
10. Assemble hoses (9) to the adapted rear ports of selector valve. Assemble hoses (13) from fold cylinders to the adapted front ports of selector valve.
11. Assemble hoses (14) to elbows (12) on selector valve.
12. Lay hoses flat along tool bars. Tie hoses down with plastic cable ties to prevent pinching or kinking during folding.
13. Proceed with "Bleeding Marker Hydraulics", page 11.

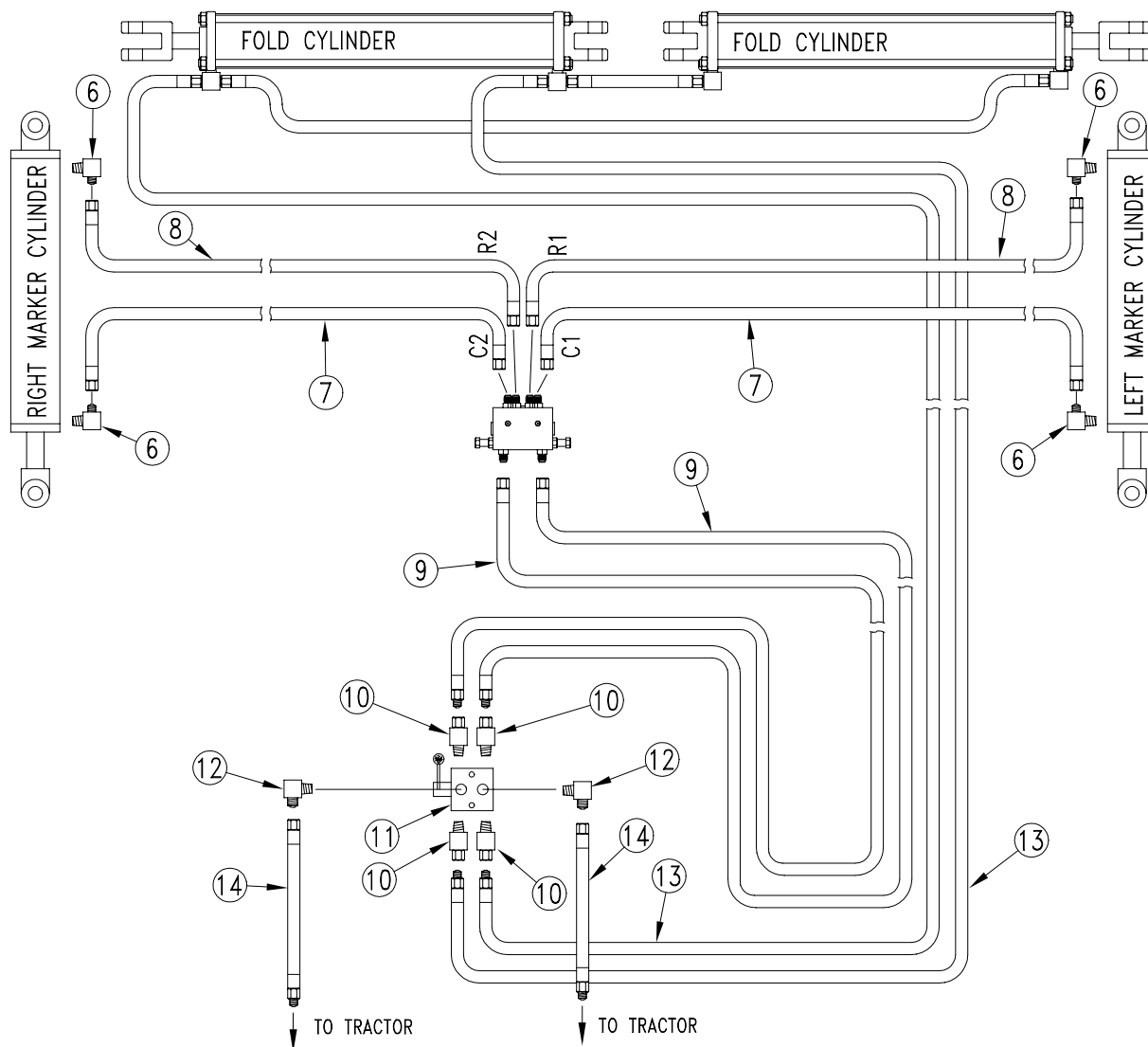


Figure 14
Dual Marker Hydraulics with Selector Valve

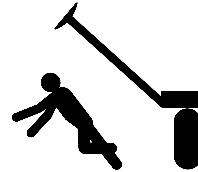
18880

Bleeding Marker Hydraulics



CAUTION!

You may be injured if hit by a folding or unfolding marker. Markers may fall quickly and unexpectedly if the hydraulics fail. Never allow anyone near the drill when folding or unfolding markers.



Refer to Figure 15

1. Make sure tractor hydraulic reservoir is full.
2. With markers unfolded in field position, crack hydraulic-hose fittings (1) at base and rod ends of each marker cylinder.
3. With tractor at idle speed, activate tractor hydraulic valve forward until oil appears at one fitting. When oil begins to seep out around a fitting, tighten that fitting. Reverse the tractor hydraulic valve until oil appears at opposite hose fitting and tighten that fitting.
4. If you have dual markers, activate your tractor hydraulic valve forward again until oil seeps out around one fitting on the other marker cylinder and tighten that fitting. Reverse tractor hydraulic valve until oil seeps out around remaining hose fitting and tighten it.
5. Fold and unfold markers slowly to work out all air.

NOTE: Use caution when folding and unfolding markers for the first time, checking for pinching and kinking of hoses.

6. Adjust marker folding to a safe speed. Refer to *Marker Adjustment* in the operator's manual.

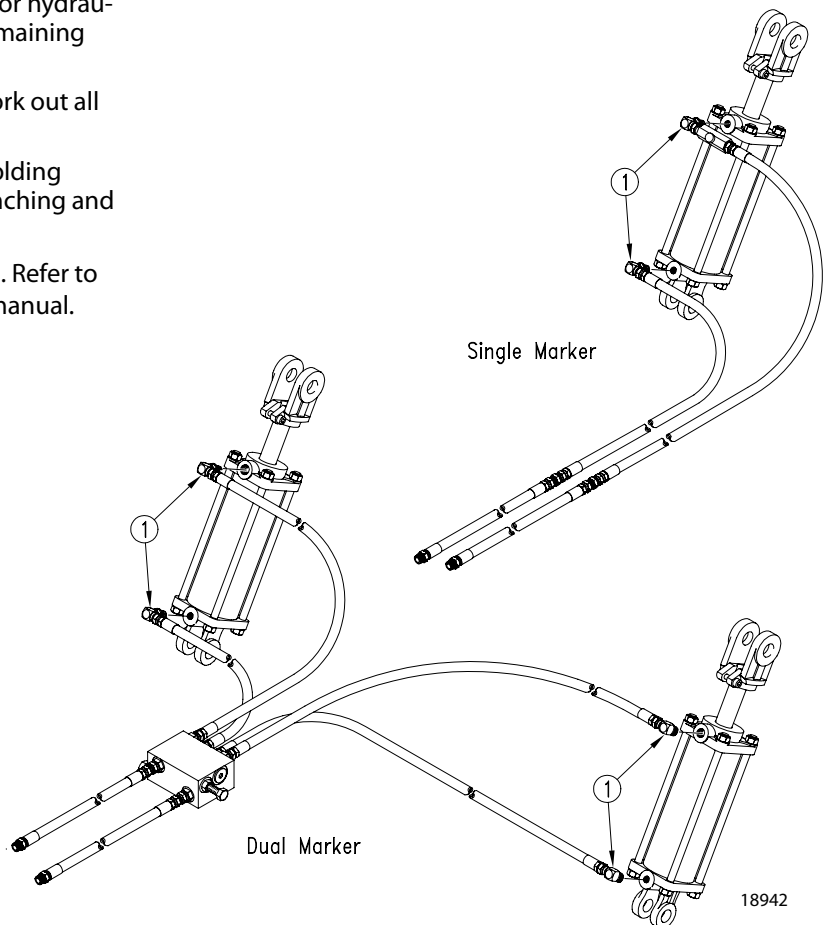


Figure 15
Bleeding Marker Hydraulics

113-708A 4000-3S Single LH Marker

Your kit includes:

Qty.	Part No.	Part Description
1	113-711K	3S-4000 SINGLE MARKER BDL
1	113-712K	3S-4000 SINGLE MARKER HDW
1	113-727V	3S-4000 MARKER HOSE BDL SGL
1	813-028C	NO-TILL HARROW FRAME
1	118-728M	3S-4000 MARKER MANUAL

113-711K 3S-4000 Single Marker Bdl

Your kit includes:

Qty.	Part No.	Part Description
1	113-563S	MARKER DISC & HUB ASSEMBLY
1	113-682D	3S-4000 MARKER CYL PIN LOCK
2	113-683D	3S-4000 MARKER CYL PIN SPACER
1	113-685D	3S-4000 MARKER LIFT ARM
2	113-686D	3S-4000 MARKER HINGE PIN LG
1	113-687D	3S-4000 MARKER HING PIN SHORT
1	113-713H	3S-4000 MARKER MNT WLMT LH
1	113-715H	3S-4000 MARKER 1ST SEC WLMT
1	113-716H	3S-4000 MARKER 2ND SEC WLMT
1	113-717D	3S-4000 MARKER CHAIN 70 IN LG
1	113-721H	3S-4000 MARKER EXT TUBE WLMT
1	113-722H	3S-4000 MARKER TRANS BRC WLMT
1	113-723H	3S-4000 MARKER TRANS REST WLMT
1	113-724H	3S-4000 MARKER TRANS MNT WLMT
1	113-725H	3S-4000 MARKER REST BRKT
1	113-790D	MARKER LIFT ARM
1	113-792H	MARKER SHEAR BASE
1	113-794H	SHEAR ARM 4000
2	123-199D	TUBE RND .620D X .385ID X 1.06
3	800-001C	GREASE ZERK STRAIGHT 1/4-28
1	802-032C	HHCS 1/2-13 X 3/4 GR5
2	802-039C	HHCS 1/2-13 X 3 GR5
2	802-062C	HHCS 5/8-11 X 5 GR5
5	802-099C	HHCS 1/2-13 X 3 1/4 GR5
1	802-100C	HHCS 5/8-11 X 4 1/2 GR5
2	802-114C	HHCS 3/8-16 X 2 1/2 GR5
3	802-138C	HHCS 5/16-18 X 2 1/4 GR5
2	802-381C	HHCS 3/8-16 X 6 GR5
1	802-589C	HHCS 7/16-14 X 2 GR5
3	803-011C	NUT LOCK 5/16-18 PLT
4	803-013C	NUT LOCK 3/8-16 PLT
2	803-019C	NUT LOCK 1/2-13 PLT
5	803-020C	NUT HEX 1/2-13 PLT
3	803-024C	NUT LOCK 5/8-11 PLT
1	803-200C	NUT HEX LOCK 7/16-14 PLT
6	804-015C	WASHER LOCK SPRING 1/2 PLT
2	804-017C	WASHER FLAT 1/2 USS PLT
2	804-028C	WASHER FLAT 1 USS PLT
1	805-058C	PIN COTTER 3/16 X 2
1	805-131C	PIN CLEVIS 1 X 4 11/16 USAB

113-711K 3S-4000 Single Marker Bdl (cont'd)

Your kit includes:

Qty.	Part No.	Part Description
1	810-423C	CYL 3X24X1.50 ROD (TIE ROD)
1	816-170C	RD BUMP STOP 2 X 1 X 1/2-13
2	818-579C	DECAL WARNING PINCH/SHEAR HAZ
2	818-580C	DECAL WARNING OVERHEAD MKR HAZ
1	890-005C	BUSHING CYL 1 1/4 X 1 X 1

113-712K 3S-4000 Single Marker Hdw

Your kit includes:

Qty.	Part No.	Part Description
3	196-146D	3-HOSE CLAMP BRACKET
6	802-012C	HHCS 5/16-18 X 1 1/2 GR5
2	802-168C	HHCS 3/8-16 X 3 1/4 GR5
2	803-014C	NUT HEX 3/8-16 PLT
8	803-020C	NUT HEX 1/2-13 PLT
8	803-021C	NUT HEX 5/8-11 PLT
2	804-013C	WASHER LOCK SPRING 3/8 PLT
8	804-015C	WASHER LOCK SPRING 1/2 PLT
4	804-017C	WASHER FLAT 1/2 USS PLT
8	804-022C	WASHER LOCK SPRING 5.8 PLT
1	805-004C	PIN CLEVIS 1 X 2 3/4 USABLE
4	806-039C	U-BOLT 5/8-11 X 6 1/32 X 7
2	806-060C	U-BOLT 1/2-13 X 6 1/32 X 7
2	806-066C	U-BOLT 1/2-13 X 3 1/32 X 4
1	806-162C	U-BOLT 3/8-16 X 1 17/32 X 3 3/4
1	810-058C	VALVE 3/8 NEEDLE
1	810-274C	DOUBLE SELECTOR VALVE 3/4FORB
4	811-021C	AD 1/2FNPTS 3/4MORB
1	811-044C	AD 3/8MNPT
1	811-065C	EL 9/16MJIC 9/16MORB
1	811-151C	AD 9/16MJIC 3/8MNPT
2	811-171C	EL 3/4MORB 9/16MJIC
1	811-281C	EL 3/8FNPT 9/16MORB
2	811-315C	AD 9/16MJIC

113-727V 3S-4000 Marker Hose Bdl Sgl

Your kit includes:

Qty.	Part No.	Part Description
2	811-579C	HH3/8R1 096 1/2MNPT 9/16FJIC
2	811-585C	HH3/8R1 408 1/2MNPT 9/16FJIC
1	811-776C	HH3/8R1 270 9/16FJIC
1	811-777C	HH3/8R1 290 9/16FJIC

14 | Marker Option

113-707A 4000-3S Dual Marker

Your kit includes:

Qty.	Part No.	Part Description
1	113-709K	3S-4000 DUAL MARKER BDL
1	113-710K	3S-4000 DUAL MARKER HDW BDL
1	113-726V	3S-4000 MARKER HOSE BDL DUAL
1	813-028C	NO TILL HARROW PALLET
1	113-728M	3S-4000 MARKER MANUAL

113-709K 3S-4000 Dual Marker Bdl

Your kit includes:

Qty.	Part No.	Part Description
2	113-563S	MARKER DISC & HUB ASSEMBLY
2	113-682D	3S-4000 MARKER CYL PIN LOCK
4	113-683D	3S-4000 MARKER CYL PIN SPACER
2	113-685D	3S-4000 MARKER LIFT ARM
4	113-686D	3S-4000 MARKER HINGE PIN LG
2	113-687D	3S-4000 MARKER HING PIN SHORT
1	113-713H	3S-4000 MARKER MNT WLMT LH
1	113-714H	3S-4000 MARKER MNT WLMT RH
2	113-715H	3S-4000 MARKER 1ST SEC WLMT
1	113-716H	3S-4000 MARKER 2ND SEC WLMT
2	113-717D	3S-4000 MARKER CHAIN 70 IN LG
1	113-717H	3S-4000 MARKER 2ND SEC WLMT
2	113-721H	3S-4000 MARKER EXT TUBE WLMT
2	113-722H	3S-4000 MARKER TRANS BRC WLMT
2	113-723H	3S-4000 MARKER TRANS REST WLMT
2	113-724H	3S-4000 MARKER TRANS MNT WLMT
2	113-725H	3S-4000 MARKER REST BRKT WLMT
2	113-790D	MARKER LIFT ARM TUBE BENT
2	113-792H	MARKER SHEAR BASE
2	113-794H	MARKER SHEAR ARM 4000
4	123-199D	TUBE RND .620D X .385ID X 1.06
6	800-001C	GREASE ZERK STRAIGHT 1/4-28
2	802-032C	HHCS 1/2-1 3X 3/4 GR5
4	802-039C	HHCS 1/2-13 X 3 GR5
4	802-062C	HHCS 5/8-11 X 5 GR5
10	802-099C	HHCS 1/2-13 X 3 1/4 GR5
2	802-100C	HHCS 5/8-11 X 4 1/2 GR5
4	802-114C	HHCS 3/8-16 X 2 1/2 GR5
6	802-138C	HHCS 5/16-18 X 2 1/4 GR5
4	802-381C	HHCS 3/8-16 X 6 GR5
2	802-589C	HHCS 7/16-14 X 2 GR5
6	803-011C	NUT LOCK 5/16-18 PLT
8	803-013C	NUT LOCK 3/8-16 PLT
4	803-019C	NUT LOCK 1/2-13 PLT
10	803-020C	NUT HEX 1/2-13 PLT
6	803-024C	NUT LOCK 5/8-11 PLT
2	803-200C	NUT HEX LOCK 7/16-14 PLT
12	804-015C	WASHER LOCK SPRING 1/2 PLT
4	804-017C	WASHER FLAT 1/2 USS PLT
4	804-028C	WASHER FLAT 1 USS PLT
2	805-058C	PIN COTTER 3/16 X 2
2	805-131C	PIN CLEVIS 1 X 4 11/16 USABLE

113-709K 3S-4000 Dual Marker Bdl (cont'd)

Your kit includes:

Qty.	Part No.	Part Description
2	810-423C	CYL 3X24X1.50 ROD (TIE ROD)
2	816-170C	RD BUMP STOP 2 X 1 X 1/2-13
4	818-579C	DECAL WARNING PINCH/SHEAR HAZ
4	818-580C	DECAL WARNING OVERHEAD MKR HAZ
2	890-005C	BUSHING CYL 1 1/4 X 1 X 1

113-710K 3S-4000 Dual Marker Hdw Bdl

Your kit includes:

Qty.	Part No.	Part Description
1	195-007D	RH FERT DRIVE MOUNT CLAMP PLT
5	196-146D	3-HOSE CLAMP BRACKET
10	802-012C	HHCS 5/16-18 X 1 1/2 GR5
2	802-014C	HHCS 3/8-16 X 3/4 GR5
2	802-168C	HHCS 3/8-16 X 3 1/4 GR5
2	802-377C	HHCS 1/2-13 X 7 1/2 GR5
6	803-014C	NUT HEX 3/8-16 PLT
16	803-020C	NUT HEX 1/2-13 PLT
16	803-021C	NUT HEX 5/8-11 PLT
8	804-013C	WASHER LOCK SPRING 3/8 PLT
16	804-015C	WASHER LOCK SPRING 1/2 PLT
8	804-017C	WASHER FLAT 1/2 USS PLT
16	804-022C	WASHER LOCK SPRING 5/8 PLT
2	805-004C	PIN CLEVIS 1 X 2 3/4 USABLE
8	806-039C	U-BOLT 5/8-11 X 6 1/32 X 7
4	806-060C	U-BOLT 1/2-13 X 6 1/32 X 7
4	806-066C	U-BOLT 1/2-13 X 3 1/32 X 4
2	806-162C	U-BOLT 3/8-16 X 1 17/32 X 3
1	810-274C	DOUBLE SELECTOR VALVE 3/4FORB
1	810-422C	VALVE,SEQ SHOEMAKER HI FLO
4	811-021C	AD 1/2FNPTS 3/4MORB
4	811-065C	EL 9/16MJIC 9/16MORB
4	811-169C	EL 9/16MJIC 9/16FJIC
2	811-171C	EL 3/4MORB 9/16MJIC

113-726V 3S-4000 Marker Hose Bdl Dual

Your kit includes:

Qty.	Part No.	Part Description
2	811-579C	HH3/8R1 096 1/2MNPT 9/16FJIC
2	811-585C	HH3/8R1 408 1/2MNPT 9/16FJIC
2	811-776C	HH3/8R1 270 9/16FJIC
2	811-777C	HH3/8R1 290 9/16FJIC

16 | Marker Option

113-048A 3S-4000 Right Hand Marker Package*Your Kit Includes:*

Qty.	Part No.	Part Description
1	113-049K	3S-4000 RH MARKER BUNDLE
1	113-109K	RH MARKER HDWR BUNDLE
1	113-116V	3S-4000 RH MARKER HOSE BUNDLE

113-049K 3S-4000 Right Hand Marker Bundle*Your Kit Includes:*

Qty.	Part No.	Part Description
1	113-563S	MARKER DISC & HUB ASSEMBLY
1	113-682D	3S-4000 MARKER CYL PIN LOCK
2	113-683D	3S-4000 MARKER CYL PIN SPAC
1	113-685D	3S-4000 MARKER LIFT ARM
2	113-686D	3S-4000 MARKER HINGE PIN LG
1	113-687D	3S-4000 MARKER HINGE PIN SHORT
1	113-714H	3S-4000 MARKER MNT WLMT RH
1	113-715H	3S-4000 MARKER 1ST SEC WLMT
1	113-717D	CHAIN COIL 1/4 HIGH TEST 73
1	113-717H	3S-4000 MARKER 2ND SEC WLMT
1	113-721H	3S-4000 MARKER EXT TUBE WLMT
1	113-722H	3S-4000 MARKER TRANS BRC WL
1	113-723H	3S-4000 MARKER TRANS REST W
1	113-724H	3S-4000 MARKER TRANS MNT WL
1	113-725H	3S-4000 MARKER REST BRKT
1	113-790D	MARKER LIFT ARM BENT
1	113-792H	MARKER SHEAR BASE
1	113-794H	MARKER SHEAR ARM 4000
2	123-199D	TUBE RND .620D X .385ID X 1.06
3	800-001C	GREASE ZERK STRAIGHT 1/4-28
1	802-032C	HHCS 1/2-13 X 3/4 GR 5
2	802-039C	HHCS 1/2-13 X 3 GR 3
2	802-062C	HHCS 5/8-11 X 5 GR 5
5	802-099C	HHCS 1/2-13 X 3 1/4 GR 5
1	802-100C	HHCS 5/8-11 X 4 1/2 GR 5
2	802-114C	HHCS 3/8-16 X 2 1/2 GR 5
3	802-138C	HHCS 5/16-18 X 2 1/4 GR 5
2	802-381C	HHCS 3/8-16 X 6 GR 5
1	802-589C	HHCS 7/16-14 X 2 GR 5
3	803-011C	NUT LOCK 5/16-18 PLT
4	803-013C	NUT LOCK 3/8-16 PLT
2	803-019C	NUT LOCK 1/2-13 PLT
5	803-020C	NUT HEX 1/2-13 PLT
3	803-024C	NUT LOCK 5/8-11 PLT
1	803-200C	NUT HEX LOCK 7/16-14 PLT
6	804-015C	WASHER LOCK SPRING 1/2 PLT
2	804-017C	WASHER FLAT 1/2 USS PLT
2	804-028C	WASHER FLAT 1 USS PLT
1	805-058C	PIN COTTER 3/16 X 2
1	805-131C	PIN CLEVIS 1 X 4 11/16 USAB
1	810-423C	CYL 3 X 24 X 1.50 ROD
1	816-170C	RD BUMP STOP 2 X 1 X 1/2-13
2	818-579C	DECAL WARNING PINCH/SHEAR
2	818-580C	DECAL WARNING OVERHEAD MKR
1	890-005C	BUSHING CYL 1 1/4 X 1 X 1

113-109K 3S-4000 Right Hand Hardware Bundle

Your Kit Includes:

Qty.	Part No.	Part Description
1	195-007D	RH FERT DRIVE MNT CLAMP PLT
2	196-146D	3-HOSE CLAMP BRACKET
4	802-012C	HHCS 5/16-18 X 1 1/2 GR 5
2	802-014C	HHCS 3/8-16 X 3/4 GR 5
2	802-377C	HHCS 1/2-13 X 7 1/2 GR 5
4	803-014C	NUT HEX 3/8-16 PLT
8	803-020C	NUT HEX 1/2-13 PLT
8	803-021C	NUT HEX 5/8-11 PLT
6	804-013C	WASHER LOCK SPRING 3/8 PLT
8	804-015C	WASHER LOCK SPRING 1/2 PLT
4	804-017C	WASHER FLAT 1/2 USS PLT
8	804-022C	WASHER LOCK SPRING 5/8 PLT
1	805-004C	PIN CLEVIS 1 X 2 3/4 USABLE
4	806-039C	U-BOLT 5/8-11 X 6 1/32 X 7
2	806-060C	U-BOLT 1/2-13 X 6 1/32 X 7 1/4
2	806-066C	U-BOLT 1/2-13 X 3 1/32 X 4
1	806-162C	U-BOLT 3/8-16 X 1 17/32 X 3
1	810-422C	SALVE, SEQ SHOEMAKER HI FLO
3	811-065C	EL 9/16 MJIC 9/16 MORB
4	811-169C	EL 9/16 MJIC 9/16 FJIC

113-116V 3S-4000 Right Hand Marker Hose Bundle

Your Kit Includes:

Qty.	Part No.	Part Description
1	811-776C	HH3/8R1 270 9/16 FJIC
1	811-777C	HH3/8R1 290 9/16 FJIC