

Installation Instructions



Precision Seeding System Inside and Outside Scraper Kits

Used with:

- 1510P and 1520P
- 2010P and 2020P
- 2410P and 2420P
- 3010P and 3015P



When you see this symbol, the subsequent instructions and warnings are serious - follow without exception. Your life and the lives of others depend on it!

Assembly Instructions for 122-259K 10P & 20P Inside Scraper Kit

Note: Right-hand and left-hand as well as front side and backside refer to the direction the opener will travel when in the field position.

This kit fits both 10 and 20 series precision openers. The 10 series is shown.

Refer to Figure 1

1. Remove one of the disk blades from the opener.
2. Attach the inside scraper mount (1) to the backside of the mounting plate (6) using 3/8" x 1 1/4" bolts (2), 3/8" lock washers (4) and 3/8" nuts (3). Position the scraper mount (1) so the angle is pointing forward and tighten bolts.
3. Attach the scraper-spring load air design (5) to the inside scraper mount (1) using a 3/8" x 1 1/4" bolt (2), 3/8" lock washer (4) and a 3/8" nut (3). Tighten bolt.
4. Replace the disk blade removed in step one.
5. Repeat above steps to install inside scrapers on the rest of the openers.

Note: The inside scraper kit cannot be installed with the Seed-Lok™ firming wheel.

Note: The inside scraper kit can be installed in conjunction with the 10 series outside scraper kit P/N: 122-260K.

| REF | PART NO | DESCRIPTION | QTY |
|-----|----------|--------------------------------|-----|
| 1 | 122-168D | 10P20P AD INSIDE SCRAPER MOUNT | 1 |
| 2 | 802-079C | HHCS 3/8-16X1 1/4 GR5 | 3 |
| 3 | 803-014C | NUT HEX 3/8-16 PLT | 3 |
| 4 | 804-013C | WASHER LOCK SPRING 3/8 PLT | 3 |
| 5 | 890-357C | SCRAPER-SPRING LOAD AIR DESIGN | 1 |

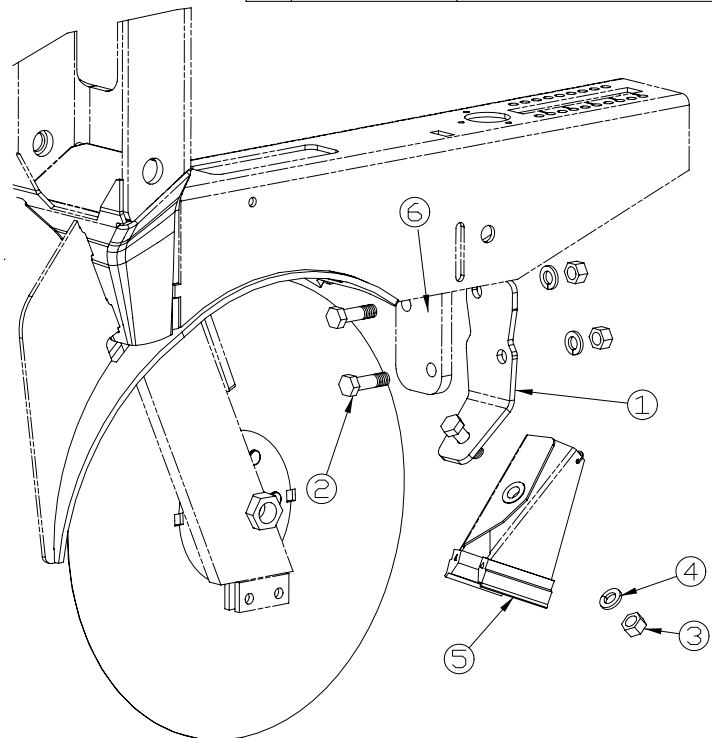


Figure 1
Inside Scraper

20162

Assembly Instructions for 122-260K 10P Outside Scraper Kit

Refer to Figure 2

1. Remove one of the disk blades from the opener.
2. Install outside scraper mount (1) to the backside of the mounting plate (6) using 3/8" x 1 1/4" bolts (2), 3/8" lock washers (4) and 3/8" nuts (3). Position the mount so the sides angle down, as shown, then tighten bolts.
3. Replace the disk blade removed in step one.

Refer to Figure 3

4. Connect the right-hand scraper mount (a) and left-hand scraper mount (b) with the scraper spring (c).
5. Attach the assembled scraper mount assembly (5) to the scraper mount (1). Position the assembly so the slots are towards the front of the opener. Align the tabs with the holes in the scraper mount and snap in place.

Refer to Figure 4

6. Install the right-hand scraper (d) on the assembled mount (5) by pulling the end of the right-hand scraper mount away from the right-hand disk blade and inserting it into the square slot in the top of the right-hand scraper (d). Extend the end through and insert it in the small slot of the right-hand scraper (d).

Note: The right-hand scraper (d) will have the curves going forward when the scraping surface is held against the right-hand disk blade.

7. Install the left-hand scraper (e) on the assembled mount (5) by pulling the end of the left-hand scraper mount away from the left-hand disk blade and inserting it into the square slot in the top of the left-hand scraper (e). Extend the end through and insert it in the small slot of the left-hand scraper (e).

8. Repeat above steps to install outside scrapers on the rest of the openers.

Note: The left-hand scraper (e) will have the curves going forward when the scraping surface is held against the left-hand disk blade.

Note: This kit can be installed with Seed-Lok™ firming wheels. If the opener is not equipped with Seed-Lok™ firming wheels, it can be installed with inside scraper kit P/N 122-259K.

| REF | PART NO | DESCRIPTION | QTY |
|-----|----------|--------------------------------|-----|
| 1 | 122-169D | 10P AD OUTSIDE SCRAPER MOUNT | 1 |
| 2 | 802-079C | HHCS 3/8-16X1 1/4 GR5 | 2 |
| 3 | 803-014C | NUT HEX 3/8-16 PLT | 2 |
| 4 | 804-013C | WASHER LOCK SPRING 3/8 PLT | 2 |
| 5 | 890-787C | AIRDESIGN JD SCRPR KIT AD21050 | 1 |

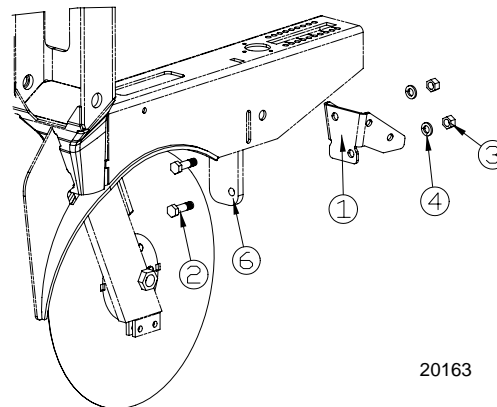


Figure 2
Outside Scraper

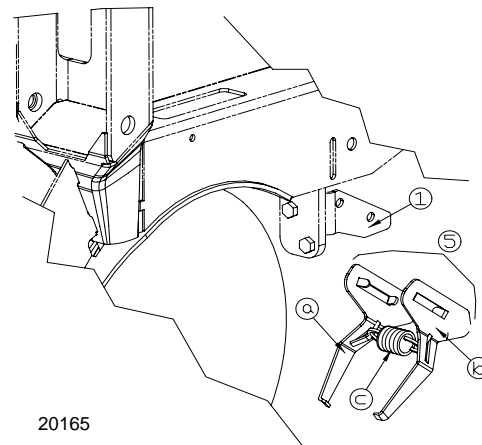


Figure 3
Scraper Mount Assembly

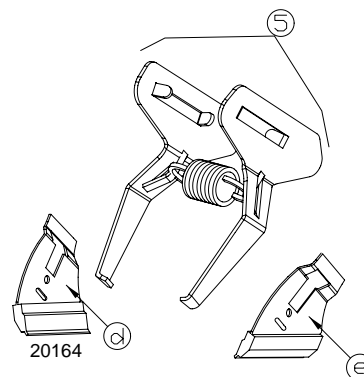


Figure 4
Scrapers

Note: Call outs a, b, c, d and e in Figures 3 and 4 make up P/N: 890-787C

Assembly Instructions for 122-265K 20P Outside Scraper Kit

Note: These instructions show how to install the left-hand scraper. The right-hand scraper uses the same instructions.

Refer to Figure 5

1. Unscrew the 5/8" x 2" bolt (1) and remove the left-hand side wheel. Be careful when removing not to lose the 18 ga. machine washers or the 3/16" thick flat washer on the inside of the wheel.
2. Remove one of the 18 ga. machine washers (2) from the end of the bolt leaving the rest in place.
3. Slide the left-hand scraper (3) over the end of the side wheel arm. Position the scraper so the blade rests against the disk and the mounting holes straddle the hole in the end of the side wheel arm.
4. Align the holes of the scraper with the hole in the end of the side wheel arm and reattach the side wheel. Be careful not to lose any of the machine washers or flat washer. Tighten bolt.
5. Repeat above steps for the remaining scraper kits.

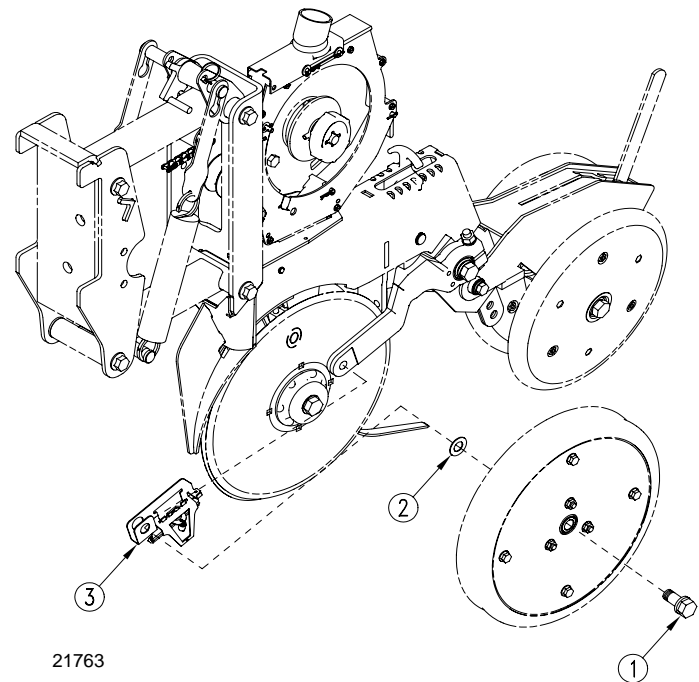


Figure 5
Installing Scraper

| Ref | Part Number | Description | Qty. |
|-----|-------------|---------------------------------------|------|
| 3 | 122-263S | Outside Scraper Kit LH | 1 |
| | 122-264S | Outside Scraper Kit RH (not shown) | 1 |