

Installation Instructions



2S-2600 Point-Row Option

Used with:

- 2S-2600



When you see this symbol, the subsequent instructions and warnings are serious - follow without exception. Your life and the lives of others depend on it!

General Information

These instructions explain how to install the Point-Row Option. The point-row option allows you to raise and lower openers on each drill section independently.

These instructions apply to:

- | | |
|----------|------------------------------|
| 195-221A | 2S-2600 Point Row Assy. |
| 195-263A | 2S-2600 Point Row Assy. 2001 |

Definitions

Right-hand and left-hand as used in this manual are determined by facing the direction the drill will travel while in use.

Manual Information

Refer to the 2S-2600 operator's manual for detailed information on safely operating, adjusting, troubleshooting and maintaining the Point-Row Option. Refer to the parts manual for part identification.

- | | |
|----------|---------------------------|
| 195-200M | 2S-2600 Operator's Manual |
| 195-200P | 2S-2600 Parts Manual |

Before You Start

Pages 6 and 7 are a detailed listing of parts included in the Point-Row Option package. Use this list to inventory parts received.

Assembly Instructions

Hydraulic Assembly

Refer to Figure 1

1. Unscrew hoses from tee fittings (1) on mounting bracket. Remove and discard tee fittings.

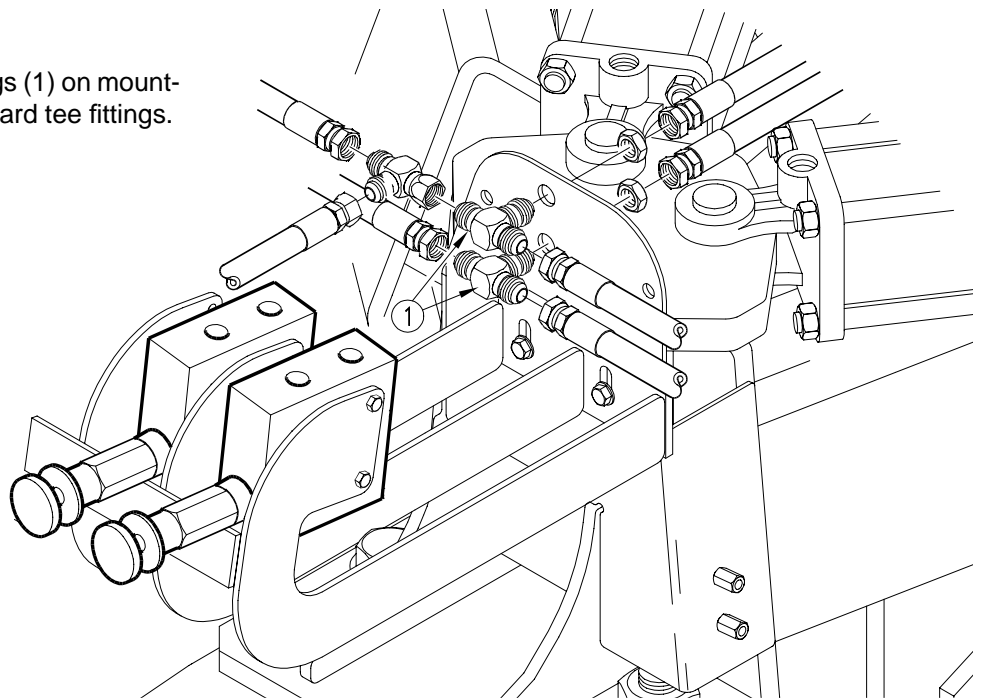


Figure 1

17083

2 | Point-Row Option

Refer to Figure 2

- Pre-assemble fittings in block. Assemble 9/16" x 3/4" elbows (1) into side ports as shown. Assemble 9/16" elbows (2) in front of block in four ports shown. Assemble 3/4" x 9/16" JIC tee (3) into port V₁ as shown. Assemble 9/16" JIC elbow (4) onto tee as shown. In two remaining front ports assemble 9/16" plugs (5). Assemble 3/4" plug (6) in side port V₂ as shown.

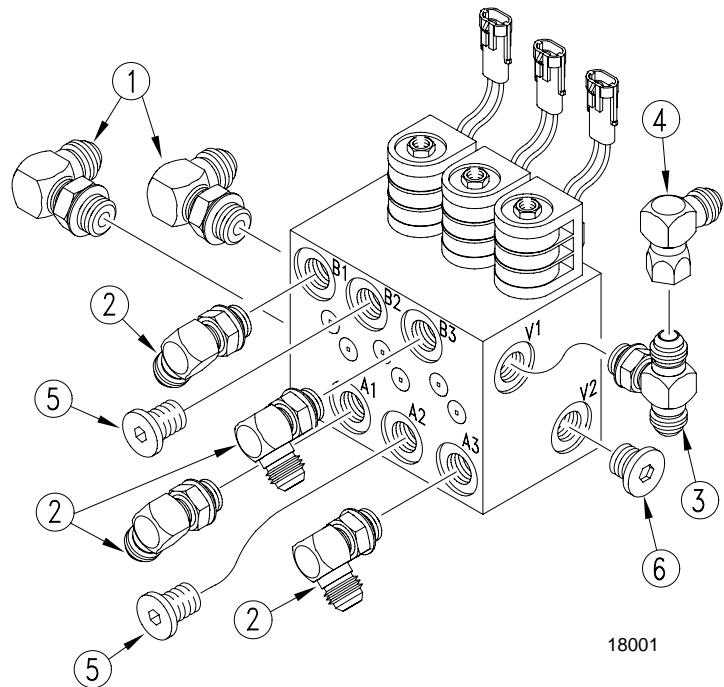


Figure 2

Refer to Figure 3

- Mount block (1) on mounting bracket as shown using 3/8" x 3 3/4" bolts (2), washers and locks nuts.
- Place new decals (3) over existing decals to distinguish valves for the left and right drill sections.

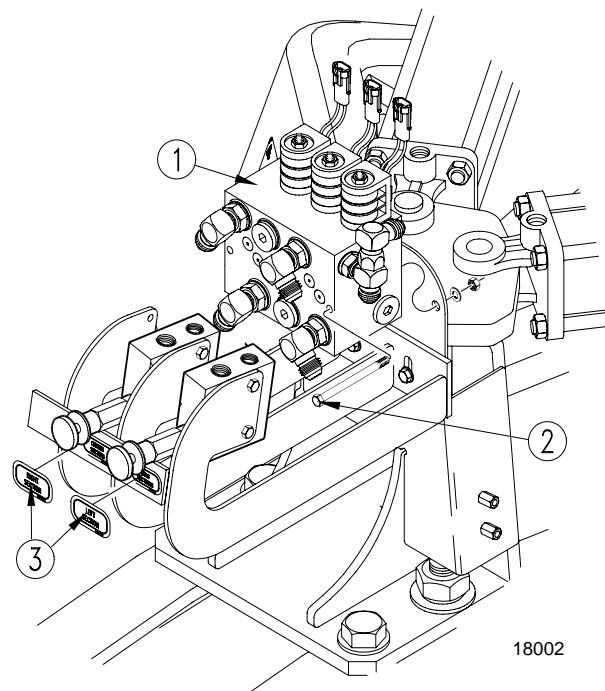
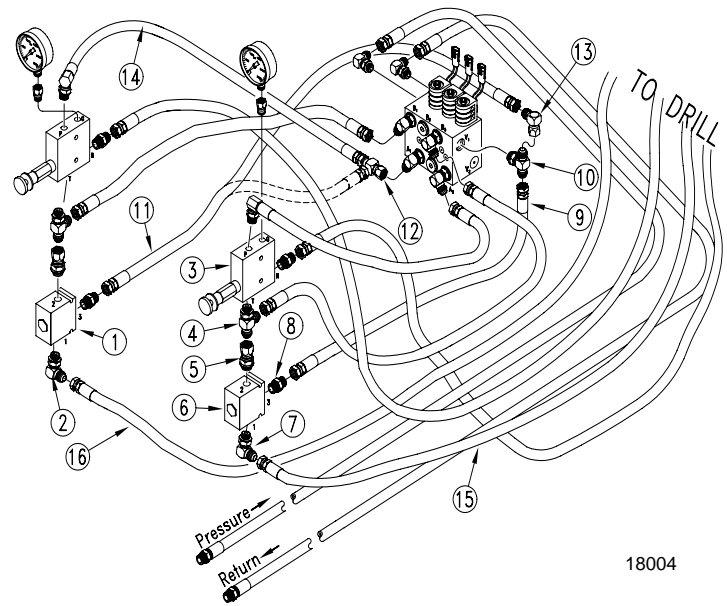


Figure 3

Refer to Figure 4

5. Remove existing hoses and tee fittings from bottom of check valve (1) on right valve. Install a 9/16" elbow (2) from kit in bottom of check valve.
6. Remove elbow from bottom of left pressure-reducing valve (3). Using parts from kit, install a JIC/O-ring tee (4), straight fitting (5) and check valve (6) into bottom of left pressure-reducing valve (3). Install existing elbow (7) in bottom of new check valve, port 1.
7. Install the 9/16" O-ring x 9/16" JIC straight adaptor (8) in back port (port 3) of left check valve (6). Install left 18" hose (9) from fitting (8) to bottom of tee fitting (10) on point-row block.
8. Re-route right-hand 18" hose (11) by disconnecting end of hose from tee fitting (12) and connecting to elbow fitting (13).
9. Remove and discard tee-fitting (12) from hose (14).
10. Reconnect hose (15) coming from drill to elbow (7) on right check valve. Reconnect hose (16) coming from drill to elbow (2) on right check valve.



18004

Figure 4

4 | Point-Row Option

Refer to Figure 5

11. Connect output hoses to new point row block.
 - a. Connect hose (1) to elbow fitting (2) in port A₁.
 - b. Connect hose (3) to elbow fitting (4) in port A₃.
 - c. Connect hose (5) to elbow fitting (6) in port B₁.
 - d. Connect hose (7) to elbow fitting (8) in port B₃.
12. Connect tractor supply hoses to new block.
 - Drills serial number DD1079 and later:
 - a. Connect hose from filter to elbow fitting (1) at port V₁.
 - b. Connect hose from top rear port on by-pass valve to elbow fitting (12) at port V₂.
 - Drills serial number DD1078 and earlier:
 - a. Connect tractor supply hose (9) to elbow fitting (1) in port V₁.
 - b. Connect tractor return hose (11) to elbow fitting (12) in port V₂.

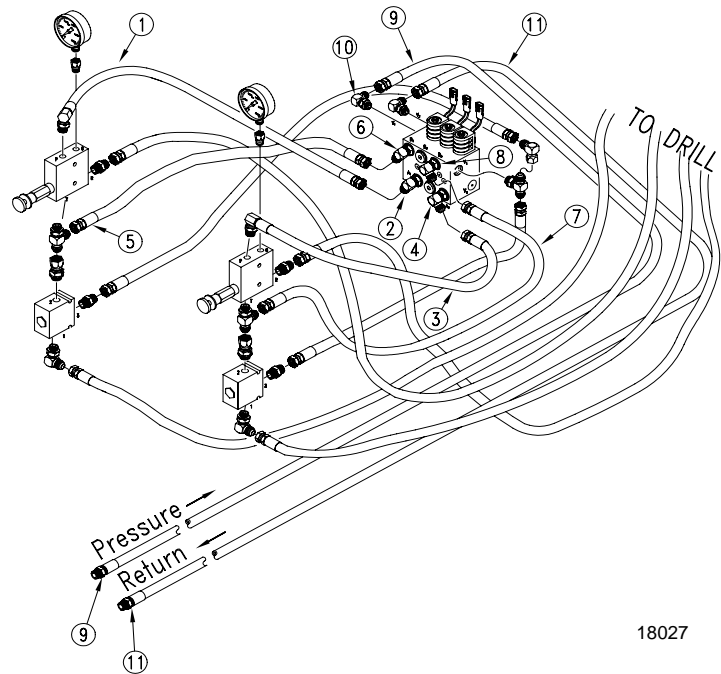


Figure 5

Refer to Figure 6

13. Re-plumb opener-lift cylinders on drill. Re-plumb cylinders so that cylinders on the same drill section are connected. Connect rod-end hoses to rod-end hoses and base-end hoses to base-end hoses.

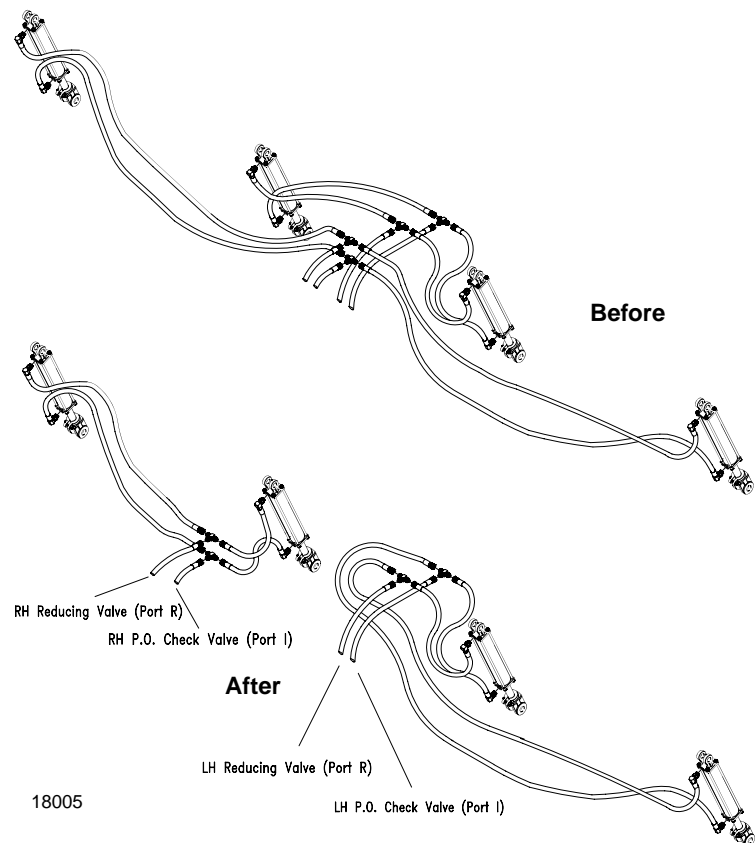


Figure 6

Mount Control Box

Refer to Figure 7

1. Mount control box (1) in a convenient location in tractor cab. Connect monitor lead (2) to monitor.
2. Connect control box to a 12-volt power source such as your tractor battery.

NOTE: Connect red wire to positive terminal and black wire to negative terminal.

3. Route wiring harness (3) through drill tongue.
4. Plug two-pin leads (4) from wiring harness into coils on block. Look for the letters L, C and R on leads to identify left, center and right.
5. Plug wiring-harness lead into control-box lead (5).
6. Secure harness so it will not be damaged during lifting, folding, transporting or field turns.
7. On drills serial number DD1079 and later, install solenoid (6) into top port on bypass valve. Plug two-pin connector on monitor leader 4, marked with the letter S, into solenoid (6).

On drills serial number DD1078 and earlier:

If your tractor does not require a bypass valve to operate the 2600-2S, discard solenoid (6) provided in point-row kit.

If you install a bypass valve on your tractor, install solenoid (6) into front port in bypass valve. Plug two-pin connector on monitor lead (7) into solenoid.

NOTE: Contact your tractor dealer to verify if a bypass valve is needed to operate the 2600-2S.

8. Verify step 12, page 4. When you engage lever in tractor, oil should be supplied to port V₁ on block. Oil is only supplied to port V₁ and is never reversed. Leave the lever on in tractor, raise and lower the openers by using electrical switches on point-row control box.

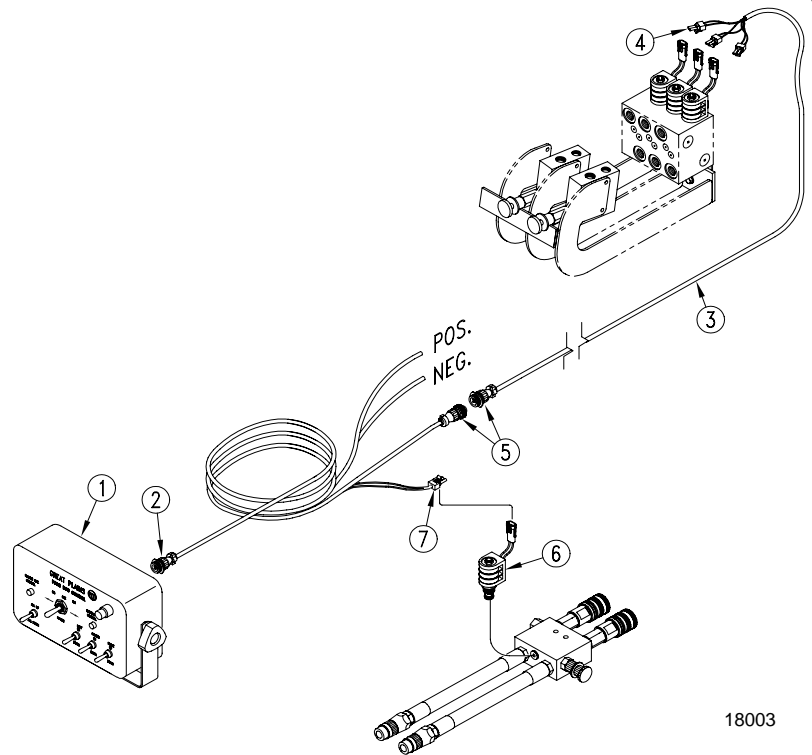


Figure 7

On drills with bypass valve at tractor:

Install solenoid (6) into front port in bypass valve. Plug two-pin connector on harness extension (7) into solenoid.

On drills with bypass valve on drill:

Install solenoid (6) into top port on bypass valve (8). Plug two-pin connector from monitor lead(s) marked with letter "S" into solenoid.

6 Point-Row Option

195-221A 2600-2S POINT ROW ACCESSORY

Your kit includes:

Qty.	Part No.	Part Description
1	195-222M	MANUAL 2S-2600 PNT ROW INSTALL
6	800-082C	CABLE TIE .31X21.5 6DIA 120LB
2	802-026C	HHCS 3/8-16X3 3/4 GR5
2	803-014C	NUT HEX 3/8-16 PLT
2	804-013C	WASHER LOCK SPRING 3/8 PLT
1	810-371C	MANIFOLD ASY 3S-3000 POINT
1	810-408C	BYPASS CARTRIDGE AND SOLENOID
1	810-428C	VALVE PO CHECK 4:1 W/9/16FORB
1	811-064C	TE 9/16MJIC 9/16MJIC 9/16M
4	811-065C	EL 9/16MJIC 9/16MORB
1	811-169C	EL 9/16MJIC 9/16FJIC
1	811-170C	AD 9/16MORB 9/16MJIC
2	811-171C	EL 3/4MORB 9/16MJIC
1	811-203C	PL 3/4MORB HOLLOW HEX
1	811-470C	TE 9/16MJIC 3/4MORB 9/16
1	811-627C	AD 9/16MORB 9/16FJIC
1	811-631C	HH3/8R1 018 9/16FJIC
2	811-757C	PL 9/16MORB HOLLOW HEX
1	818-662C	DECAL RIGHT SECTION
1	818-663C	DECAL LEFT SECTION
1	823-175C	3 SECT POINT ROW WIRE HARNESS
1	823-185C	POINT ROW CONTROL BOX
1	823-186C	POINT ROW EXT W/ POWER LEAD

195-263A 2600-2S POINT ROW ACCESSORY 2001

Your kit includes:

Qty.	Part No.	Part Description
1	195-222M	MANUAL 2S-2600 PNT ROW INSTALL
6	800-082C	CABLE TIE .31X21.5 6DIA 120LB
2	802-026C	HHCS 3/8-16X3 3/4 GR5
2	803-014C	NUT HEX 3/8-16 PLT
2	804-013C	WASHER LOCK SPRING 3/8 PLT
1	810-371C	MANIFOLD ASY 3S-3000 POINT
1	810-408C	BYPASS CARTRIDGE AND SOLENOID
1	810-428C	VALVE PO CHECK 4:1 W/9/16FORB
1	811-064C	TE 9/16MJIC 9/16MJIC 9/16M
4	811-065C	EL 9/16MJIC 9/16MORB
1	811-169C	EL 9/16MJIC 9/16FJIC
1	811-170C	AD 9/16MORB 9/16MJIC
2	811-171C	EL 3/4MORB 9/16MJIC
1	811-203C	PL 3/4MORB HOLLOW HEX
1	811-470C	TE 9/16MJIC 3/4MORB 9/16
1	811-627C	AD 9/16MORB 9/16FJIC
1	811-631C	HH3/8R1 018 9/16FJIC
2	811-757C	PL 9/16MORB HOLLOW HEX
1	818-662C	DECAL RIGHT SECTION
1	818-663C	DECAL LEFT SECTION
1	823-175C	3 SECT POINT ROW WIRE HARNESS
1	823-185C	POINT ROW CONTROL BOX
1	823-190C	POINT ROW CABLE W/ POWER LEAD