



4000-3S Point-Row Option

Used with:

- 4000-3S



When you see this symbol, the subsequent instructions and warnings are serious - follow without exception. Your life and the lives of others depend on it!

General Information

These instructions explain how to install the Point-Row Option. The point-row option allows you to raise and lower openers on each drill section independently.

These instructions apply to:

- 195-251A 4000-3S Point Row Assy.
- 195-261A 4000-3S Point Row Assy. 2001

Instructions apply to 3S-4000 drills built before December 31, 2004 for S/N YY1310-. These are the last of single large inline hydraulic filter.

Definitions

Right-hand and left-hand as used in this manual are determined by facing the direction the drill will travel while in use.

Manual Information

Refer to the 4000-3S operator's manual for detailed information on safely operating, adjusting, troubleshooting and maintaining the Point-Row Option. Refer to the parts manual for part identification.

- 195-242M 4000-3S Operator's Manual
- 195-242P 4000-3S Parts Manual

Before You Start

Pages 8 and 9 are a detailed listing of parts included in the Point-Row Option package. Use this list to inventory parts received.

Assembly Instructions

Hydraulic Assembly

Refer to Figure 1

1. Unscrew hoses from tee fittings (1) on mounting bracket. Remove and discard tee fittings.

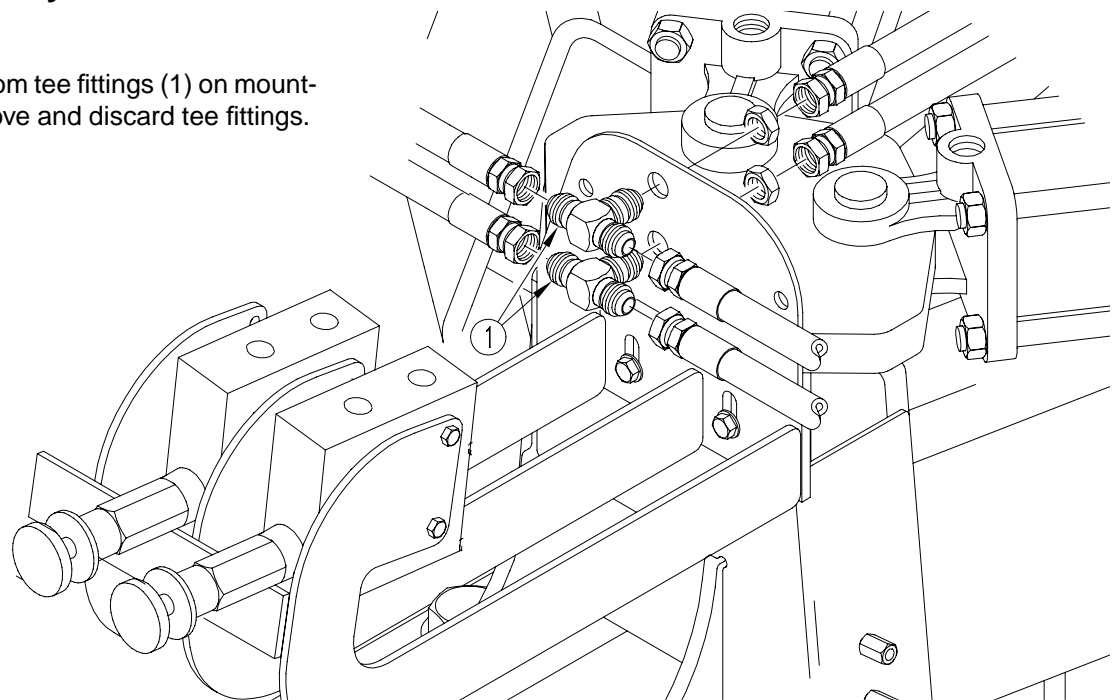


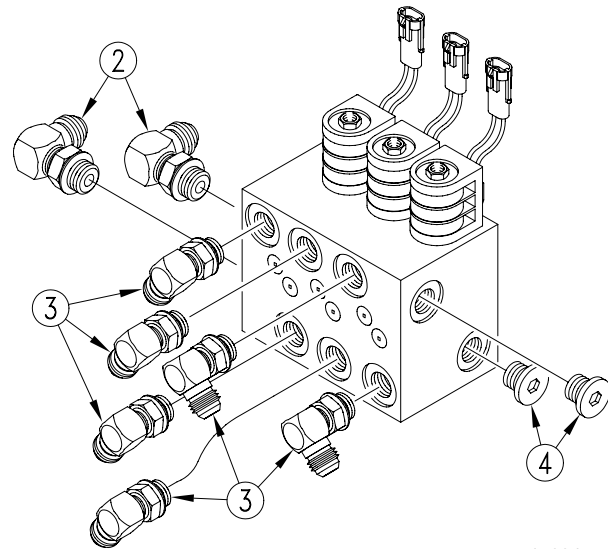
Figure 1

17083

2 | Point-Row Option

Refer to Figure 2

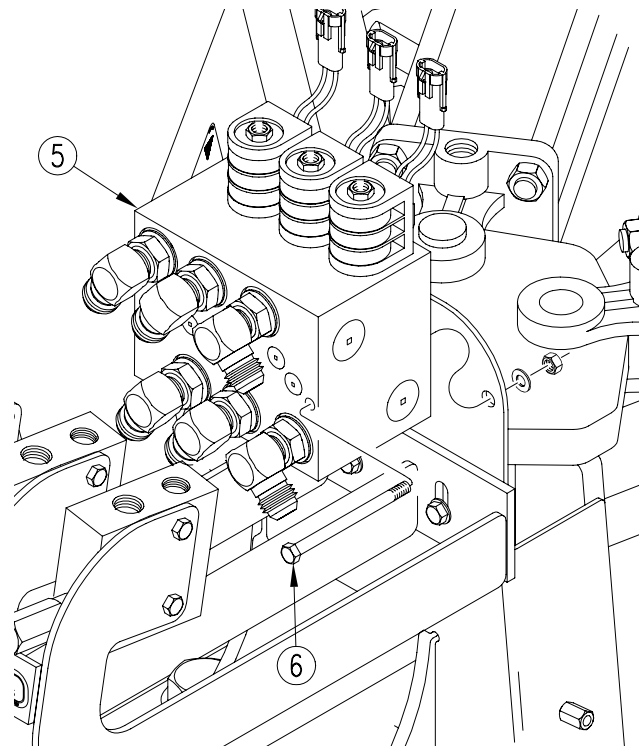
2. Pre-assemble fittings in block. Assemble the 3/4" elbows (2) in the side ports as shown. Assemble 9/16" elbows (3) in the ports in the front of the block. Assemble 3/4" plugs (4) in side ports as shown.



17084

Figure 2*Refer to Figure 3*

3. Mount block (5) on mounting bracket using 3/8" x 3 3/4" bolts (6), washers and locks nuts.

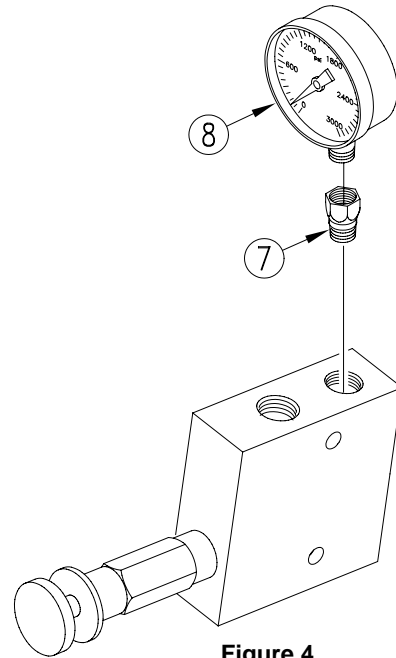


17085

Figure 3

Refer to Figure 4

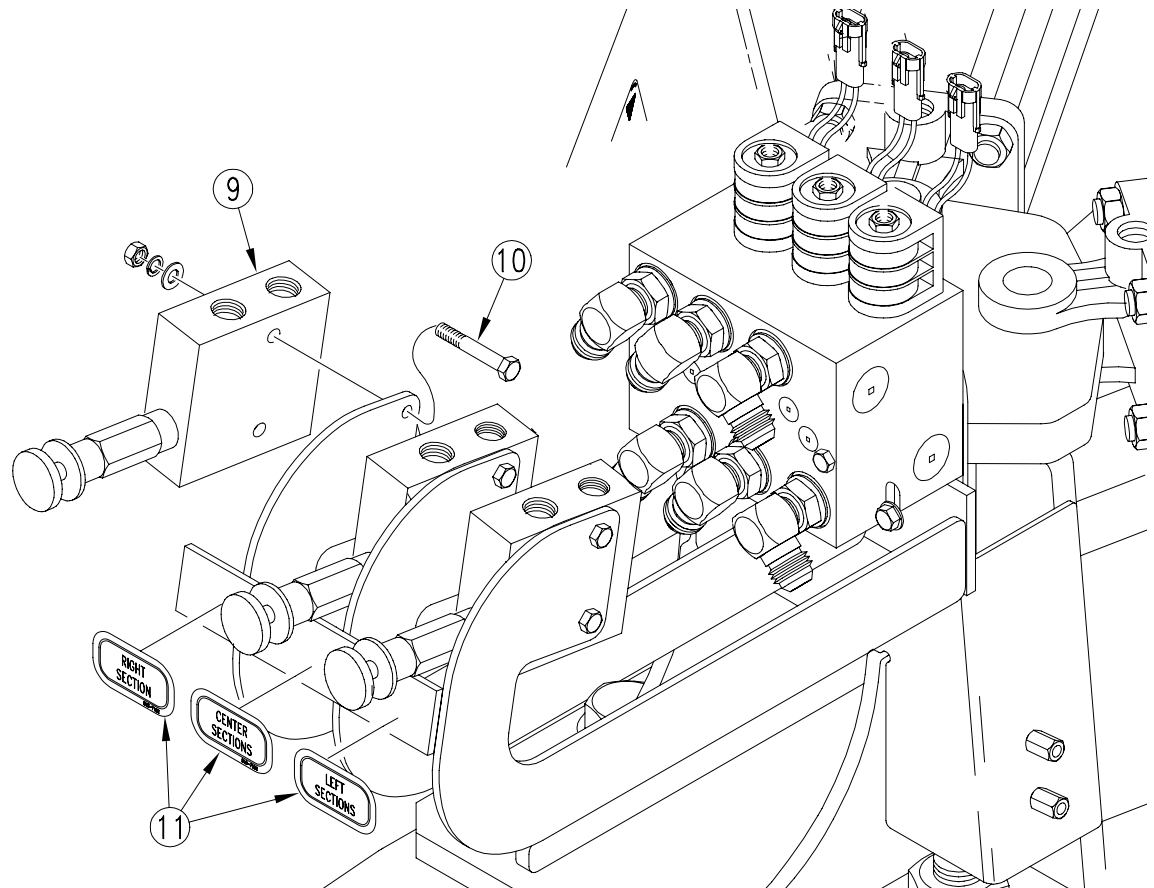
4. Using a reducer fitting (7), assemble gauge (8) on new pressure-control valve.
 - a. Assemble reducer fitting into top-rear port.
 - b. Apply sealant to threads on gauge.
 - c. Thread gauge into reducer fitting until gauge is tight and facing forward.

**Figure 4**

17099

Refer to Figure 5

5. Mount the new pressure-control valve (9) on the mounting bracket using 1/4" x 2 1/4" bolts (10), flat washers, lock washers and nuts. Place the new decals (11) under the pressure-control valves.

**Figure 5**

17086

4 | Point-Row Option

Refer to Figure 6

6. Assemble new 21" hose (12) to top-front port on new pressure control valve. Using tee fitting (13), assemble new 18" hose (14) and one new 72" hose (15) to bottom port. Using adaptor fitting (16), assemble remaining 72" hose (17) to rear port.
7. Route 72" hoses (15 and 17) from new pressure control valves back along top of drill frame.
8. Connect short hoses to new block. Connect 21" hoses to lower-front ports in block. Connect 18" hoses to top-front ports in block. Connect hoses to block in same order as valves. (For example, connect hoses from center valve to center ports in block.)

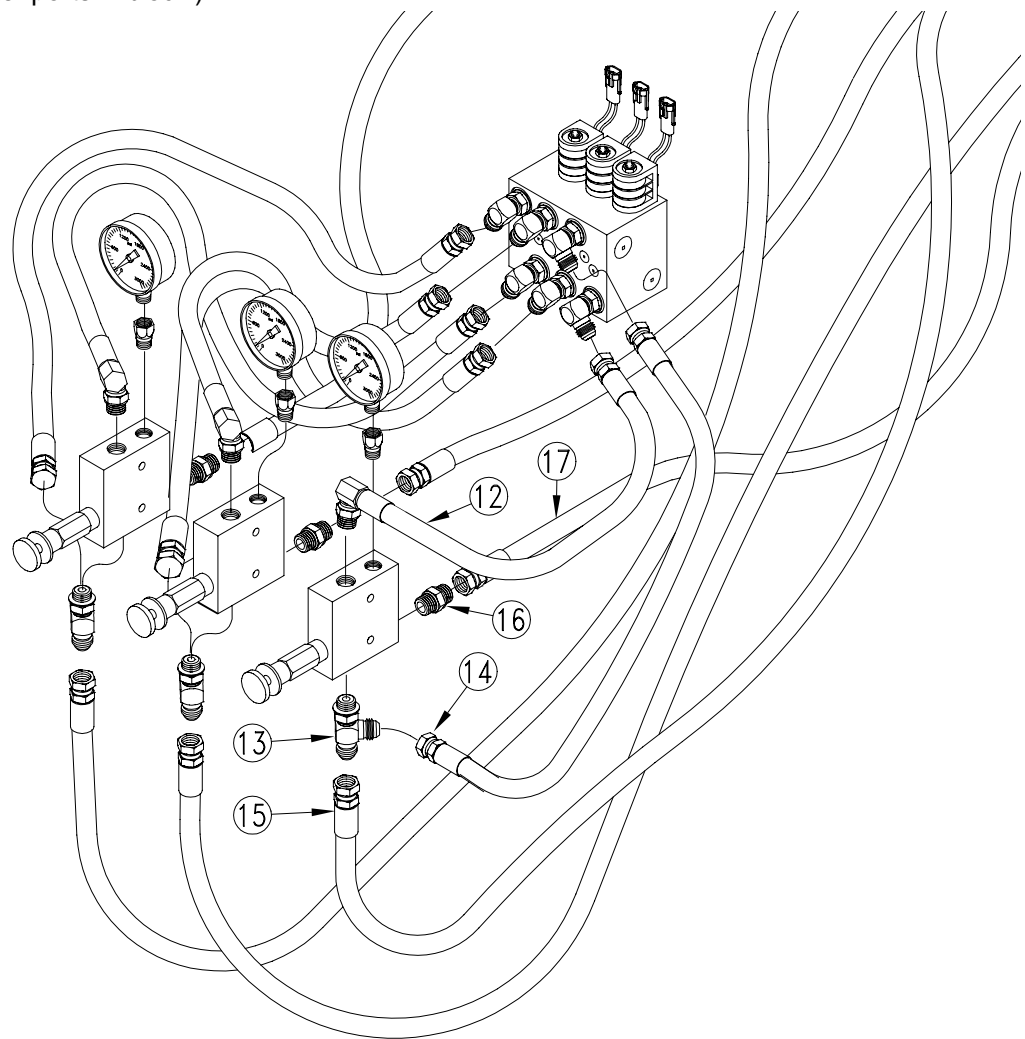


Figure 6

17087

Refer to Figure 7

9. At the drill frame, remove the tee fittings (18) in the wing hydraulic circuit.

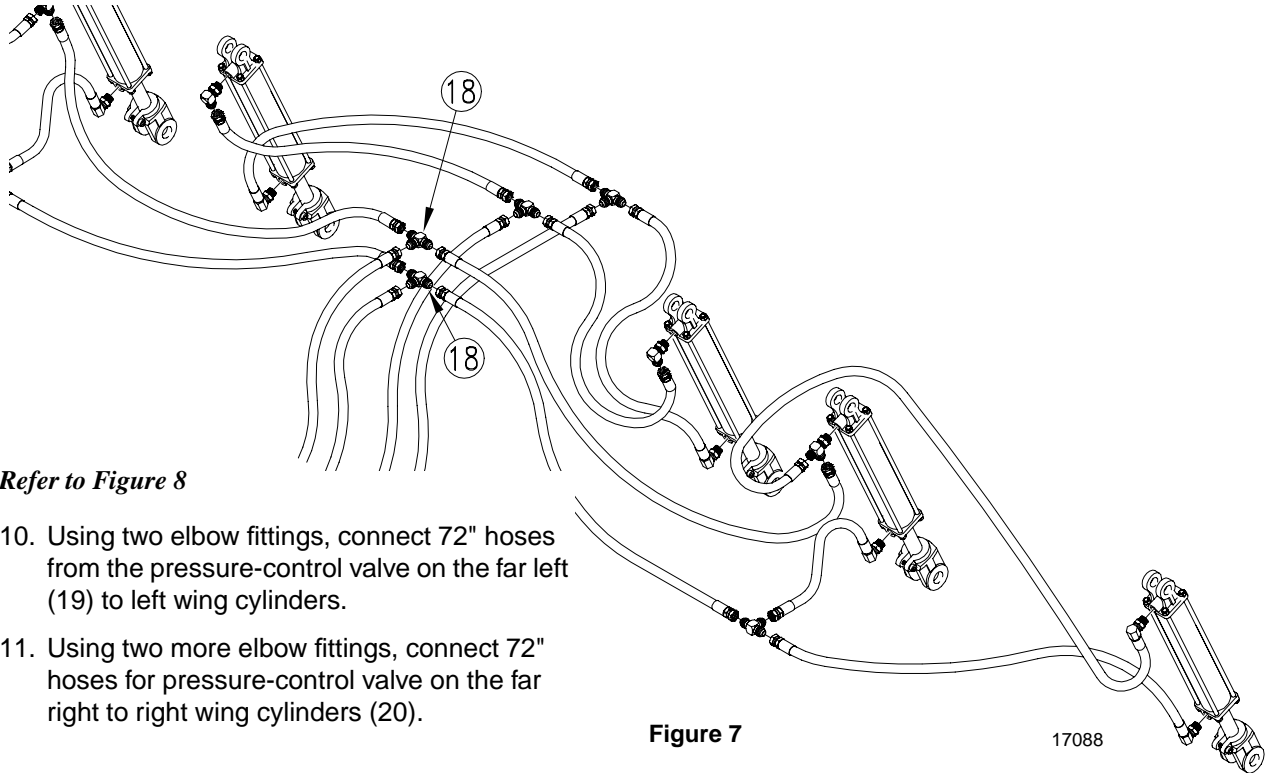


Figure 7

Refer to Figure 8

10. Using two elbow fittings, connect 72" hoses from the pressure-control valve on the far left (19) to left wing cylinders.
11. Using two more elbow fittings, connect 72" hoses for pressure-control valve on the far right to right wing cylinders (20).

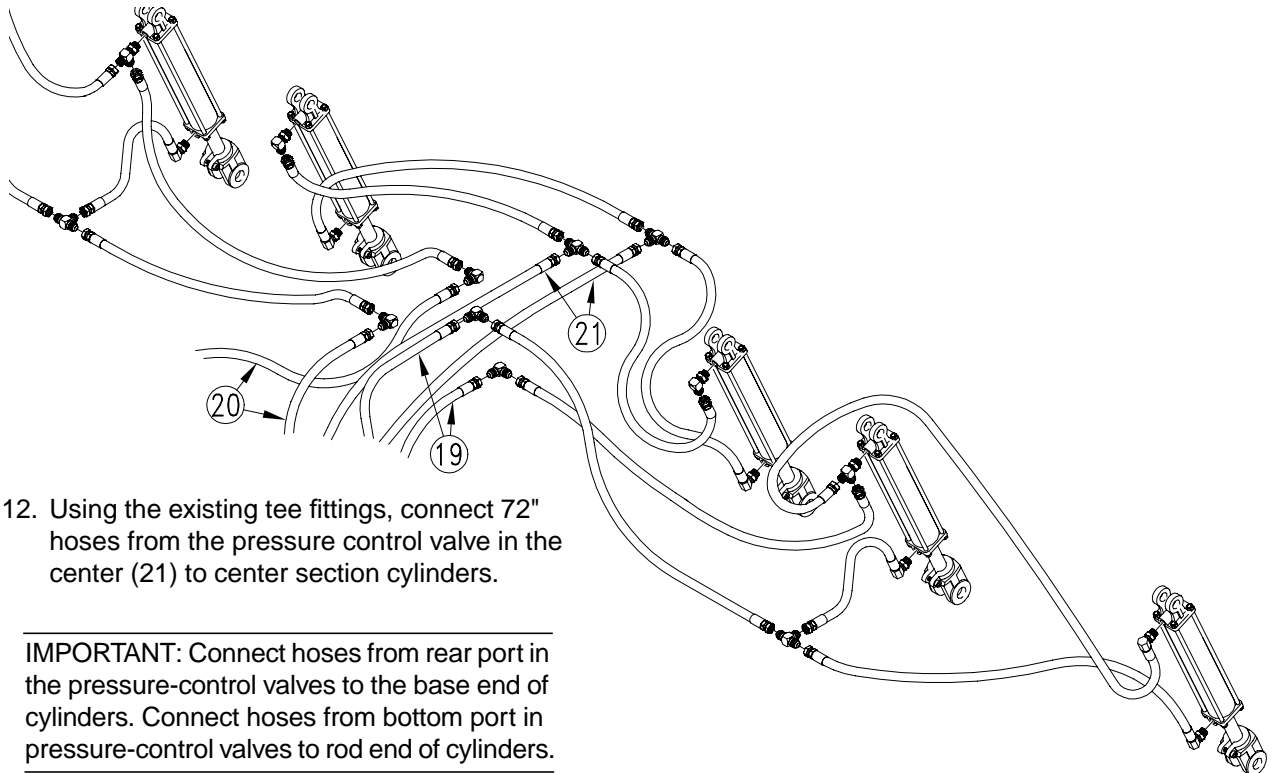


Figure 8

12. Using the existing tee fittings, connect 72" hoses from the pressure control valve in the center (21) to center section cylinders.

IMPORTANT: Connect hoses from rear port in the pressure-control valves to the base end of cylinders. Connect hoses from bottom port in pressure-control valves to rod end of cylinders.

Refer to Figure 9

13. Connect hoses from tractor outlets to the elbow fittings (22) in the side of the block as follows.

On drills serial number YY1019 and earlier with bypass valve at tractor:

Connect hose from filter (23) to V1 (upper elbow).

Connect the other hose (24) to V2 (lower elbow).

On drills serial number YY1020 and later with bypass valve on drill:

Connect hose from filter (23) to V1 (upper elbow).

Connect hose from top rear port on bypass valve to V2 (lower elbow).

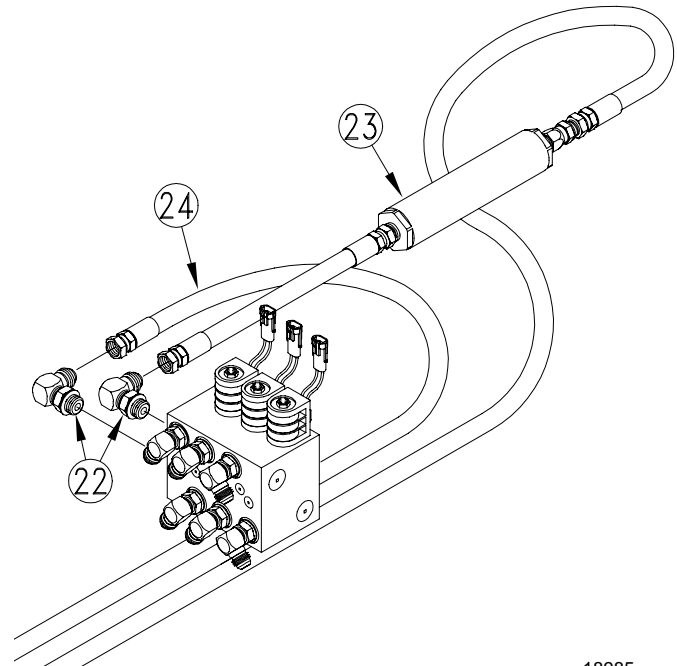


Figure 9

18985

Refer to Figure 10

14. Secure hydraulic hoses under hose clamps (25) on top of mainframe.

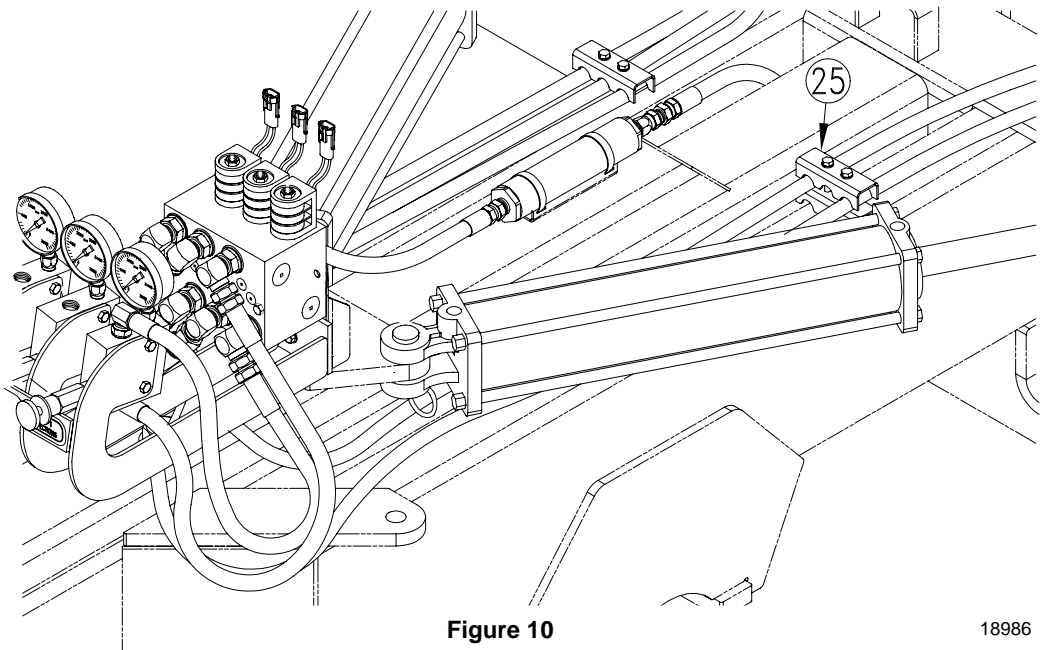


Figure 10

18986

Mount Control Box

Refer to *Figure 11*

1. Mount control box (1) in a convenient location in tractor cab. Plug harness extension (2) into control box. Connect control box to a 12-volt power source such as your tractor battery.

NOTE: Connect red wire to positive terminal and black wire to negative terminal.

2. Route wiring harness (3) through drill tongue.
3. Plug two-pin connectors (4) from wiring harness into coils on block. Look for letters L, C and R on leads to identify left, center and right.
4. Plug wiring-harness lead into control-box lead (5).
5. Secure wiring harness so it will not be damaged during lifting, folding, transporting or field turns.
6. Install solenoid (6).

On drills serial number YY1019 and earlier with bypass valve at tractor:

Install solenoid (6) into front port in bypass valve. Plug two-pin connector on harness extension (7) into solenoid.

On drills serial number YY1020 and later with bypass valve on drill:

Install solenoid (6) into top port on bypass valve (8). Plug two-pin connector from monitor lead(s) marked with letter "S" into solenoid.

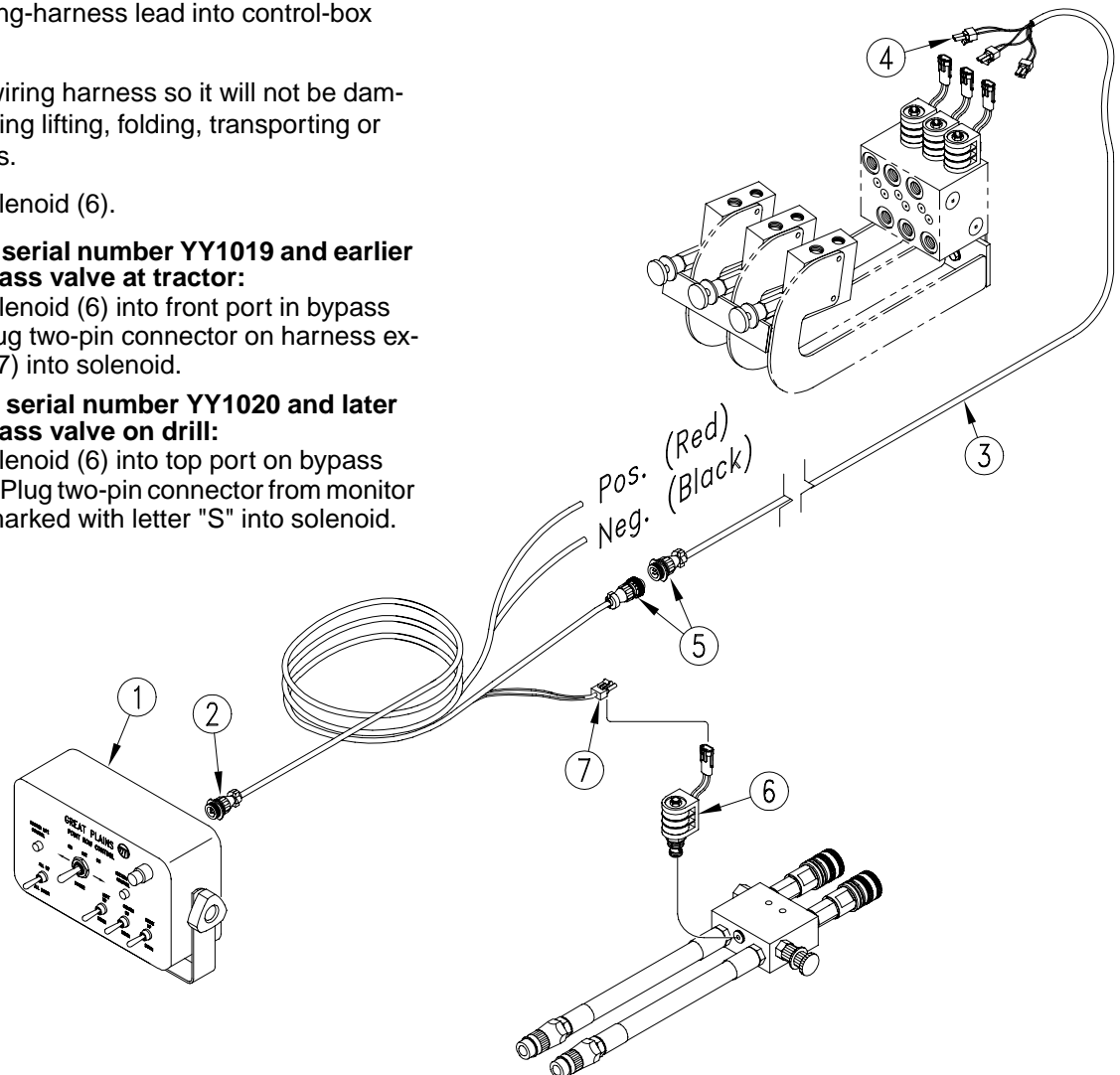


Figure 11

18987

8 Point-Row Option

195-251A 3S-4000 POINT ROW ACCESSORY

Your kit includes:

Qty.	Part No.	Part Description
1	195-252M	MANUAL 4000-3S P ROW INSTALATION
6	800-082C	CABLE TIE .31X21.5 6DIA 120 LB
2	802-026C	HHCS 3/8-16X3 3/4 GR5
2	802-551C	HHCS 1/4-20X2 1/4 GR5
2	803-006C	NUT HEX 1/4-20 PLT
4	803-014C	NUT HEX 3/8-16 PLT
5	804-006C	WASHER LOCK SPRING 1/4 PLT
4	804-013C	WASHER LOCK SPRING 3/8 PLT
2	804-075C	WASHER FLAT 1/4 USS PLT
1	810-300C	PRESSURE GAUGE 3000 PSI
1	810-301C	VALVE PRESS REDUCING W/CHECK
1	810-371C	MANIFOLD ASY 3S-3000 POINT ROW
1	810-408C	BYPASS CARTRIDGE AND SOLENOID
1	811-064C	TE 9/16MJIC 9/16MJIC 9/16MORB
6	811-065C	EL 9/16MJIC 9/16MORB
1	811-170C	AD 9/16MORB 9/16MJIC
2	811-171C	EL 3/4MORB 9/16MJIC
2	811-203C	PL 3/4MORB HOLLOW HEX
4	811-393C	EL 9/16MJIC
1	811-631C	HH3/8R1 018 9/16FJIC
1	811-632C	HH3/8R1 021 9/16FJIC9/16MORD90
1	811-677C	AD 9/16MORB 1/4FNPT
2	811-774C	HH3/8R1 072 9/16FJIC
1	818-662C	DECAL RIGHT SECTION
1	818-663C	DECAL LEFT SECTION
1	818-664C	DECAL CENTER SECTION
1	823-175C	3 SECT POINT ROW WIRE HARNESS
1	823-185C	POINT ROW CONTROL BOX
1	823-186C	POINT ROW EXT W/ POWER LEAD

195-261A 3S-4000 POINT ROW ACCESSORY 2001

Your kit includes:

Qty.	Part No.	Part Description
1	195-252M	MANUAL 4000-3S P ROW INSTALATION
6	800-082C	CABLE TIS .31X21.5 6DIA 12
2	802-026C	HHCS 3/8-16X3 3/4 GR5
2	802-551C	HHCS 1/4-20X2 1/4 GR5
2	803-006C	NUT HEX 1/4-20 PLT
4	803-014C	NUT HEX 3/8-16 PLT
5	804-006C	WASHER LOCK SPRING 1/4 PLT
4	804-013C	WASHER LOCK SPRING 3/8 PLT
2	804-075C	WASHER FLAT 1/4 USS PLT
1	810-300C	PRESSURE GAUGE 3000 PSI
1	810-301C	VALVE PRESS REDUCING W/CHE
1	810-371C	MANIFOLD ASY 3S-3000 POINT
1	810-408C	BYPASS CARTRIDGE AND SOLEN
1	811-064C	TE 9/16MJIC 9/16MJIC 9/16M
6	811-065C	EL 9/16MJIC 9/16MORB
1	811-170C	AD 9/16MORB 9/16MJIC
2	811-171C	EL 3/4MORB 9/16MJIC
2	811-203C	PL 3/4MORB HOLLOW HEX
4	811-393C	EL 9/16MJIC
1	811-631C	HH3/8R1 018 9/16FJIC
1	811-632C	HH3/8R1 021 9/16FJIC9/16MO
1	811-677C	AD 9/16MORB 1/4FNPT
2	811-774C	HH3/8R1 072 9/16FJIC
1	818-662C	DECAL RIGHT SECTION
1	818-663C	DECAL LEFT SECTION
1	818-664C	DECAL CENTER SECTION
1	823-175C	3 SECT POINT ROW WIRE HARN
1	823-185C	POINT ROW CONTROL BOX
1	823-190C	POINT ROW CABLE W/ POWER L