

Update Instructions



No-Till Precision Seeding System Weight Bracket Option

Used with:

- 3N-3010P
- 3N-3020P



When you see this symbol, the subsequent instructions and warnings are serious - follow without exception. Your life and the lives of others depend on it!

General Information

These instructions explain how to install the optional weight brackets. This modification improves the performance in severe no-till conditions of the original equipment.

These instructions apply to:

Weight Bracket Package	Part Number
3N-3010P WEIGHT BRACKET PKG	197-158A



WARNING!

Transport Hazard. Adding more than the recommend weight to the drill frame could cause a tire to blow during transport, leading to a serious road accident and personal injury. Do not add more than 2000 pounds to the drill frame.

If soil conditions require more weight for coulter penetration, weight bracket kits are available. Each kit contains four weight brackets – one for each wing and two for the center section. Each bracket holds up to five, 100-pound suitcase weights commonly available through tractor dealers.

To order weight brackets, contact your Great Plains dealer.

NOTE: Do not add more than 2000lbs to the drill or warranty will be void and machine damage will occur.

Before You Start

Page 2 is a detailed listing of parts included in the Weight Bracket Package. Use this list to inventory parts received.

Assembly Instructions

Refer to Figure 1

Wing Brackets:

1. Mount wing weight bracket (1) to the inside of the wing plate (2) using (3) 1-8 X 2 1/2 bolts, (4) 1 SAE flat washers, (5) spring lock washers and (6) 1-8 PLT hex nuts. Bracket must be towards the center of the drill.
2. Assemble weight bracket adjustable leg (7) to bottom of weight bracket (1) with (8) 5/8-11 X 2 1/4 bolts, (9) 5/8 USS flat washers, (10) 5/8 spring lock washers and (11) 5/8-11 hex nut. Adjust weight bracket leg to make weights hang level.

Note: Left and Right wing weight brackets are assembled in the same manner.

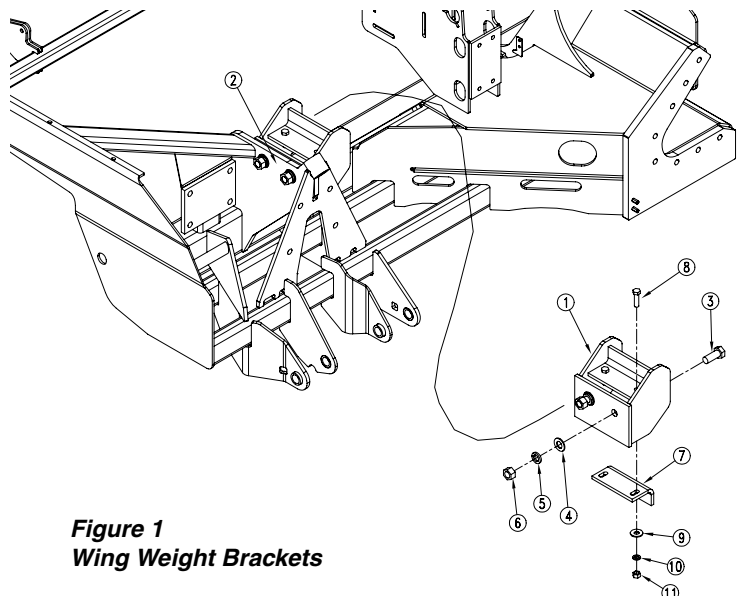


Figure 1
Wing Weight Brackets

19211

Assembly Instructions Cont.

Refer to Figure 2

Center Brackets:

1. Install center weight brackets (1) on frame between the gauge wheel assembly and center of the drill. Orient as shown in figure 2 so that weights hang to the front. Do not place too close to the transmission sprockets so as to be able to set speeds. Use (2) 3/4-10X8 1/16X9 1/2 u-bolts, (3) 3/4 spring lock washers, and (4) 3/4-10 hex nuts.
2. Assemble weight bracket adjustable leg (5) to bottom of weight bracket (1) with (6) 5/8-11 X 2 1/4 bolts, (7) 5/8 USS flat washers, (8) 5/8 spring lock washers and (9) 5/8-11 hex nut. Adjust weight bracket leg to make weights hang level.

Note: Left and Right center weight brackets are assembled in the same manner.

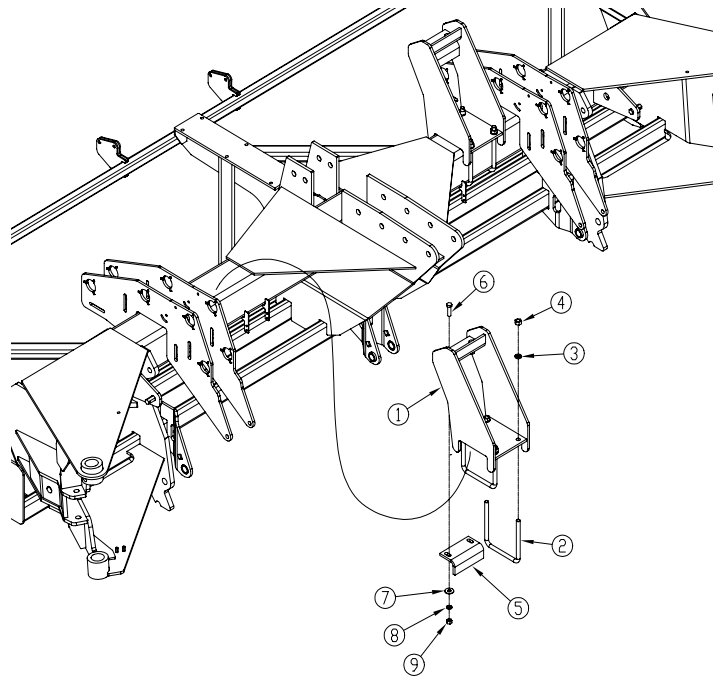


Figure 2
Center Weight Brackets

19212

197-158A 3N-30 Weight Bracket Package

Your Kit includes:

<u>Qty</u>	<u>Part No.</u>	<u>Part Description</u>
4	197-062D	Weight Bracket Adj Leg
2	197-159H	Weight Brkt Wldmt 8 Tube
2	197-160H	3N-30 Weight Brkt Assy
1	197-161M	Manual 3N-30 Weight Brkt Assy
8	802-057C	HHCS 5/8-11X2 1/4 Gr5
4	802-096C	HHCS 1-8X2 1/2 Gr5
8	803-021C	Nut Hex 5/8-11 PLT
8	803-027C	Nut Hex 3/4-10 PLT
4	803-031C	Nut Hex 1-8 PLT
8	804-019C	Washer Flat 5/8 USS PLT
8	804-022C	Washer Lock Spring 5/8 PLT
8	804-023C	Washer Lock Spring 3/4 PLT
4	804-027C	Washer Lock Spring 1 PLT
4	804-029C	Washer Flat 1 SAE PLT
4	806-037C	U-Bolt 3/4-10X8 1-16X9 1/2
1	813-027C	14X24 Woven Polypropylene Bag