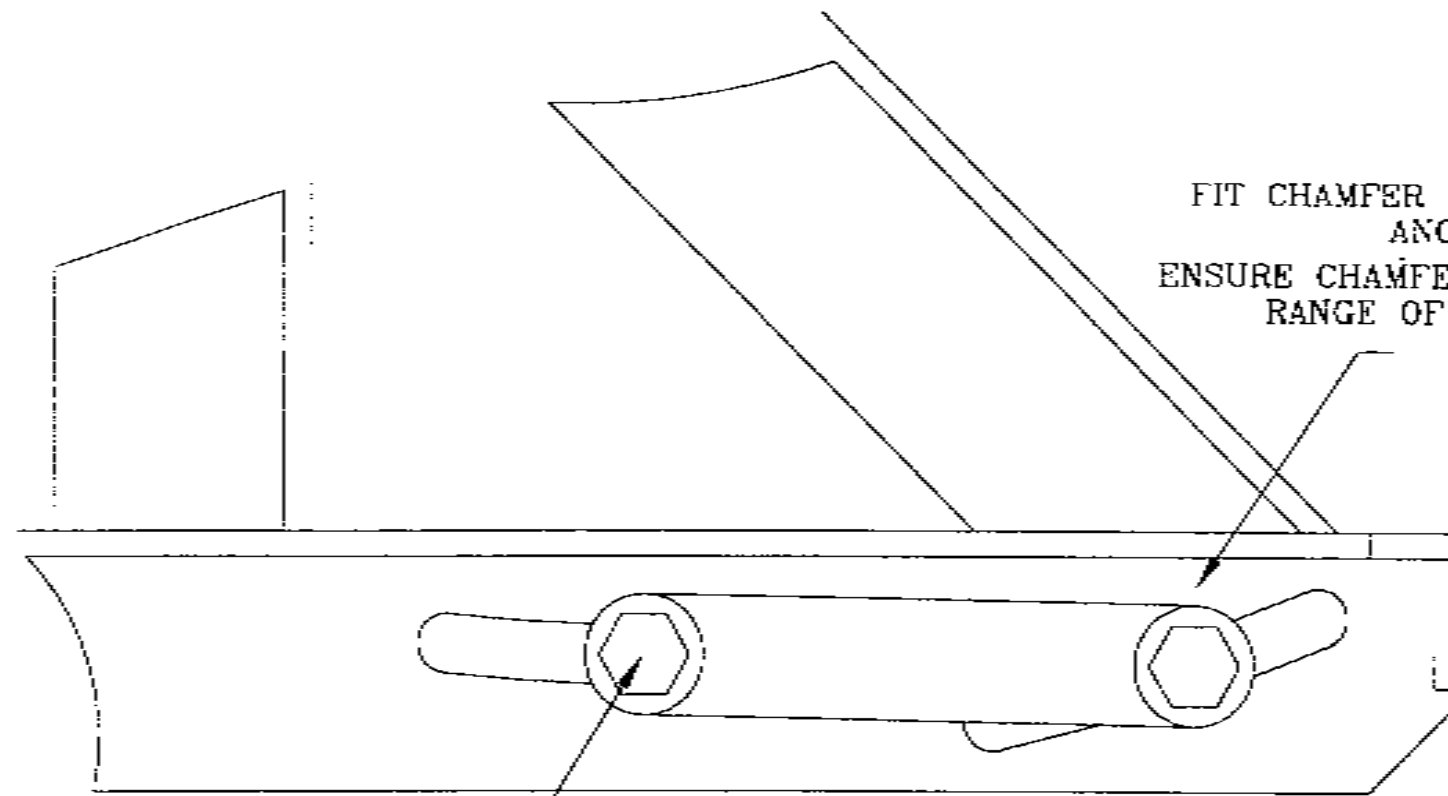


# **SIMBA**

**2B, 3B, 12C, 23C & 34C SERIES  
FOLDING WING  
DISC HARROW**





FIT CHAMFER TO SLOT NEAREST  
ANGLE FACE  
ENSURE CHAMFER ALLOWS FOR FULL  
RANGE OF ADJUSTMENTS

M30x110  
P3120

C' SERIES - GANG SLIDE TIE

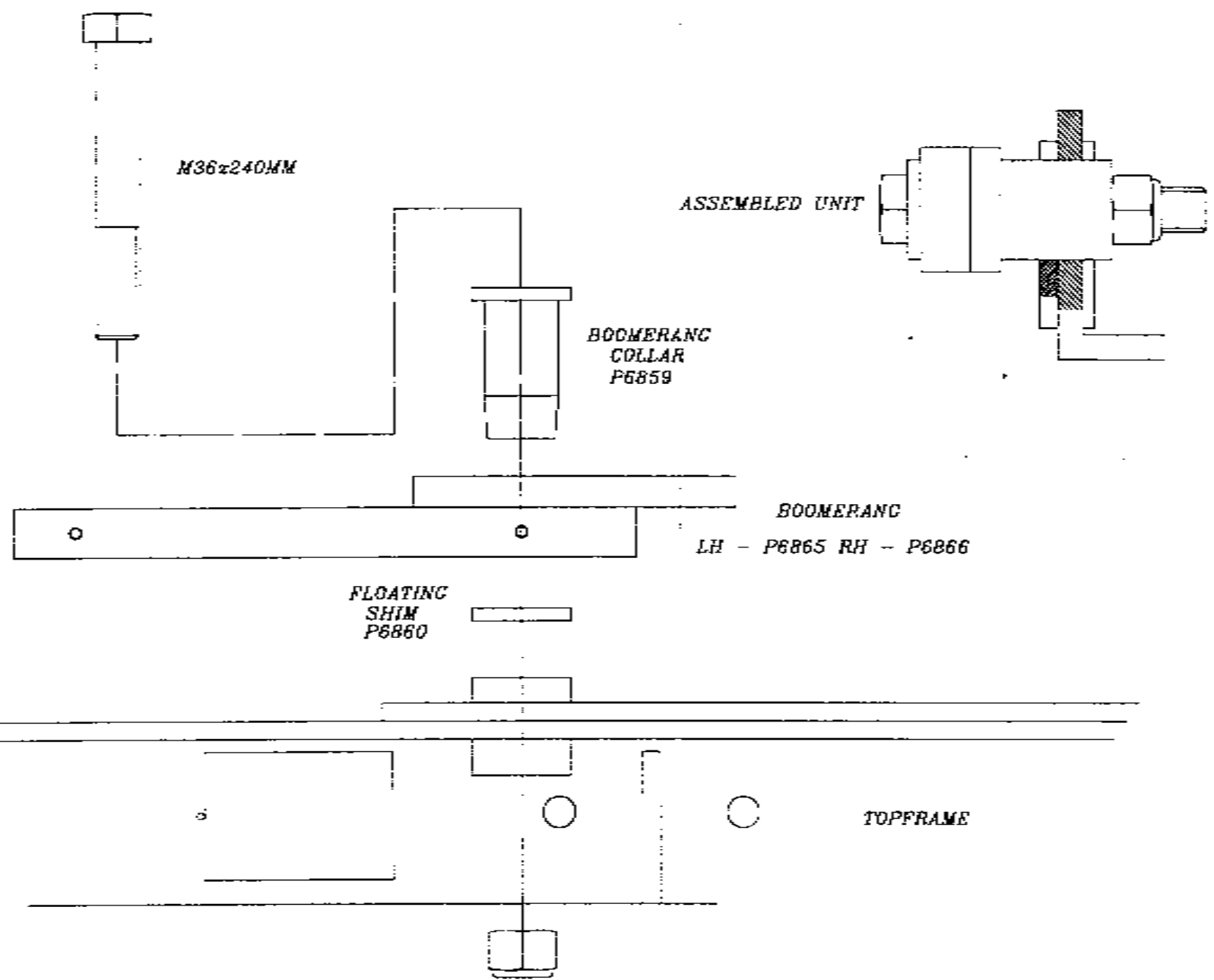
UPDATED  
19/05/98

FROM SERIAL NO.  
ALL

TO SERIAL NO.

ISSUE  
A

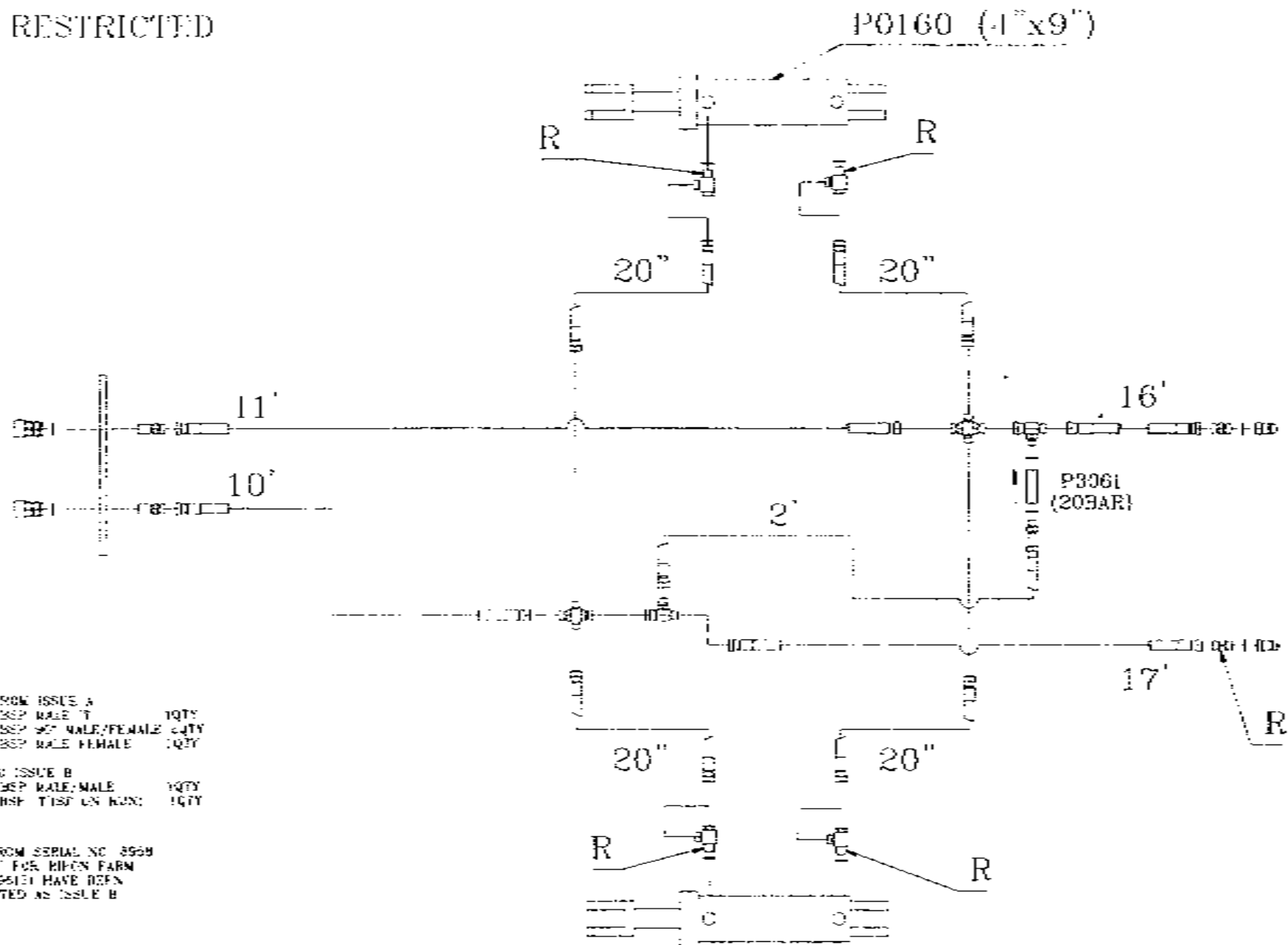
DRAWING NO.  
AS0201



SERIES - 12C, 23C AND 34C BOOMERANG BUSH ASSEMBLY

UPDATED 19/2/07	FROM SERIAL NO.	TO SERIAL NO.	ISSUE B	DRAWING NO. AS0173
--------------------	-----------------	---------------	------------	-----------------------

R = RESTRICTED



DELETIONS FROM ISSUE A  
 P0004 1/2" BSP MALE 'T' 1QTY  
 P0004 1/2" BSP 90° MALE/FEMALE 1QTY  
 P0006 1/2" BSP MALE FEMALE 1QTY

ADDITIONS TO ISSUE B  
 P0002 1/2" BSP MALE/MALE 1QTY  
 P0015 1/2" BSP TIEB LN NOUN 1QTY

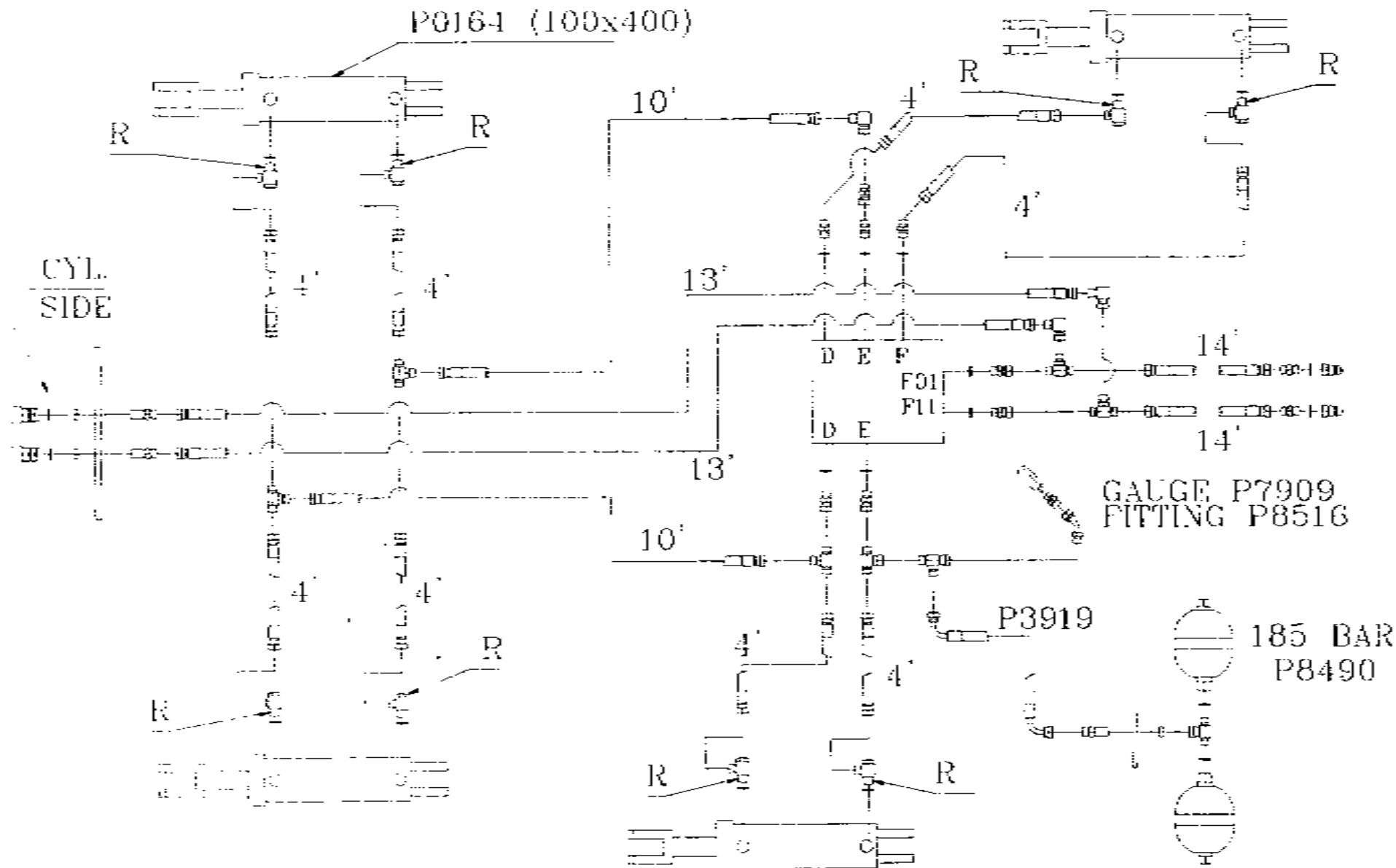
MACHINES FROM SERIAL NO. 8999  
 2000 TO 41 FOR BIRCH FARM  
 WORKS NO. 25151 HAVE BEEN  
 FACTORY FITTED AS ISSUE B

### HYDRAULIC KIT P8627B

'99 SPEC. N/C F/W DISC-LIFT HYDRAULICS

UPDATED	FROM SERIAL NO	TO SERIAL NO	ISSUE	DRAWING NO
05/4/99			B	AS0555

R = RESTRICTED

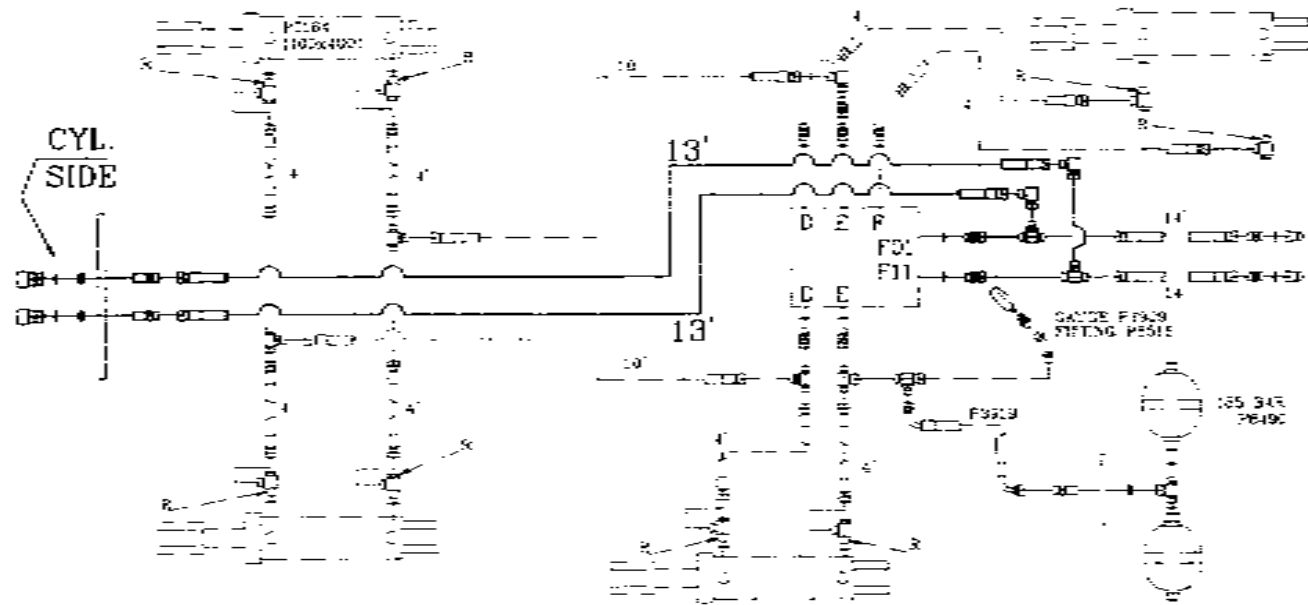


HYDRAULIC KIT P8627  
MANIFOLD P8472 SEE SAFETY INFORMATION

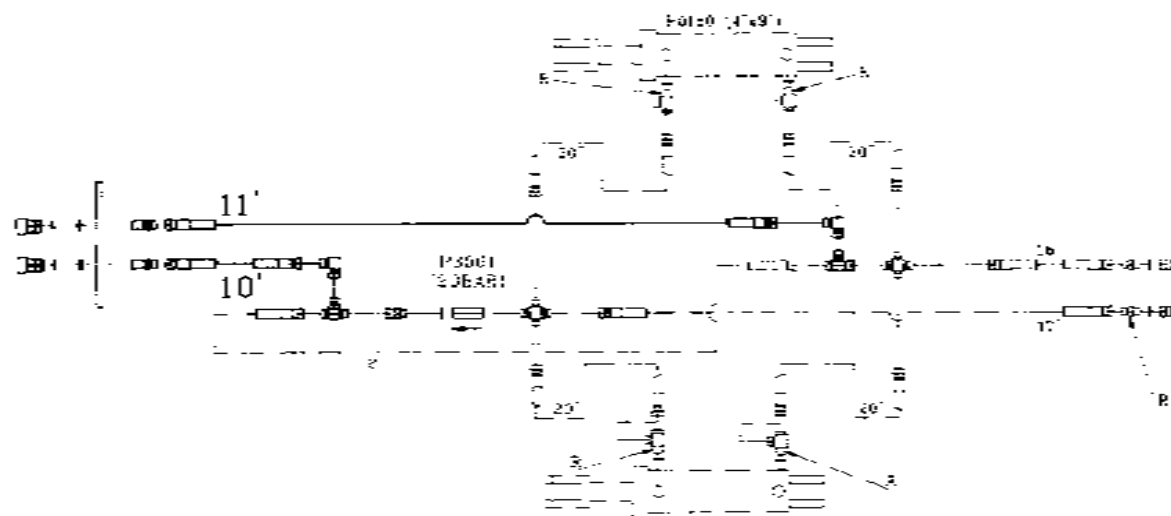
99 SPEC. N.C. F.W. DISC- WING HYDRAULICS

UPDATED FROM SERIAL NO	TO SERIAL NO	ISSUE	DRAWING NO
17/11/99		A	AS0556

WING HYDRAULICS



LIFT HYDRAULICS

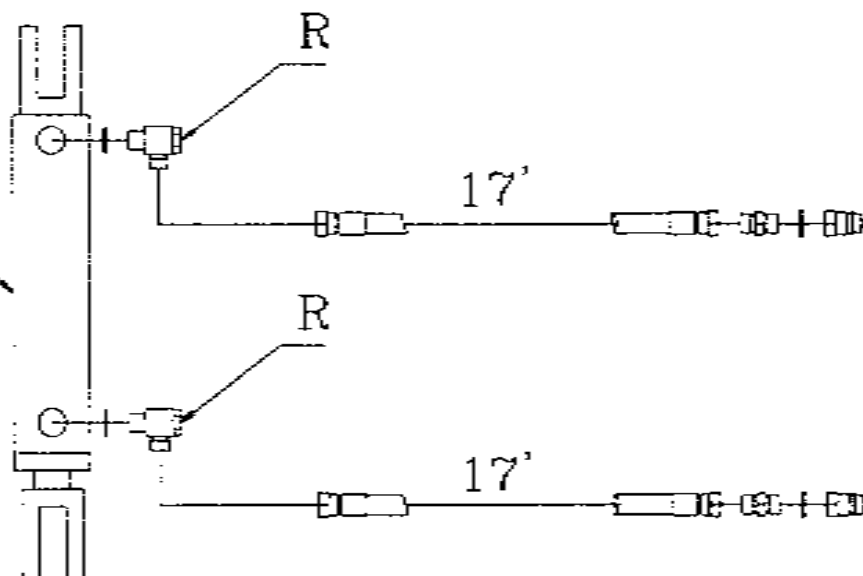


'99 SPEC ECONOMY N/C F/W DISC.  
REAR DRAWBAR HYDRAULIC KIT

DRAWN	PART NUMBER	FROM SERIAL NO	TO SERIAL NO	ISSUE, DRAWING NO.
5/2/99				A:AS0571
UPDATED				
K4/100/001				

R = RESTRICTED

P3241 (75x250)  
FITTED WITH  
55mm INTL.  
RESTRICTOR



'99 SPEC STANDARD N/C F/W DISC  
HYDRAULIC KIT P8627

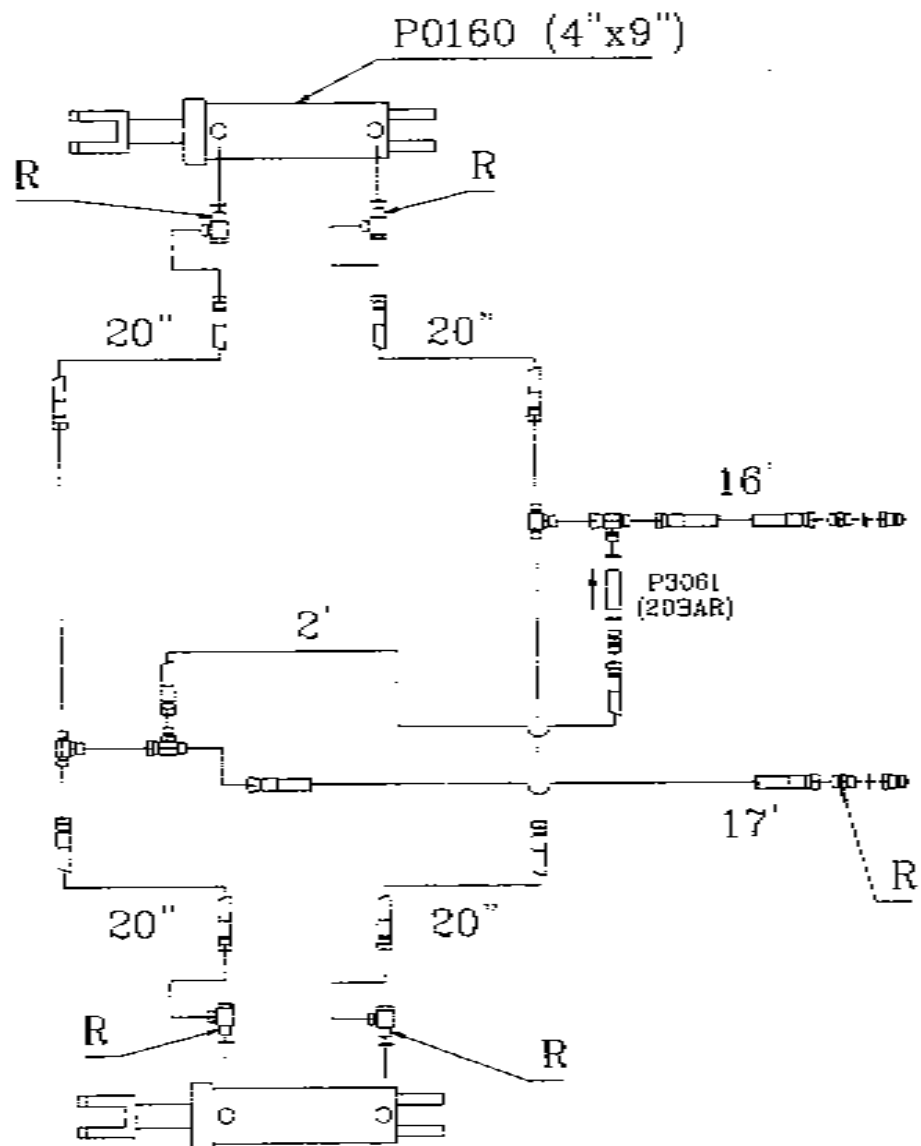
'99 SPEC ECONOMY N/C F/W DISC  
HYDRAULIC KIT U1214

'99 SPEC. N/C F/W DISC - GANG ANG. HYD.

UPDATED	FROM SERIAL NO.	TO SERIAL NO.	ISSUE	DRAWING NO.
19/11/99			A	AS0557



R = RESTRICTED

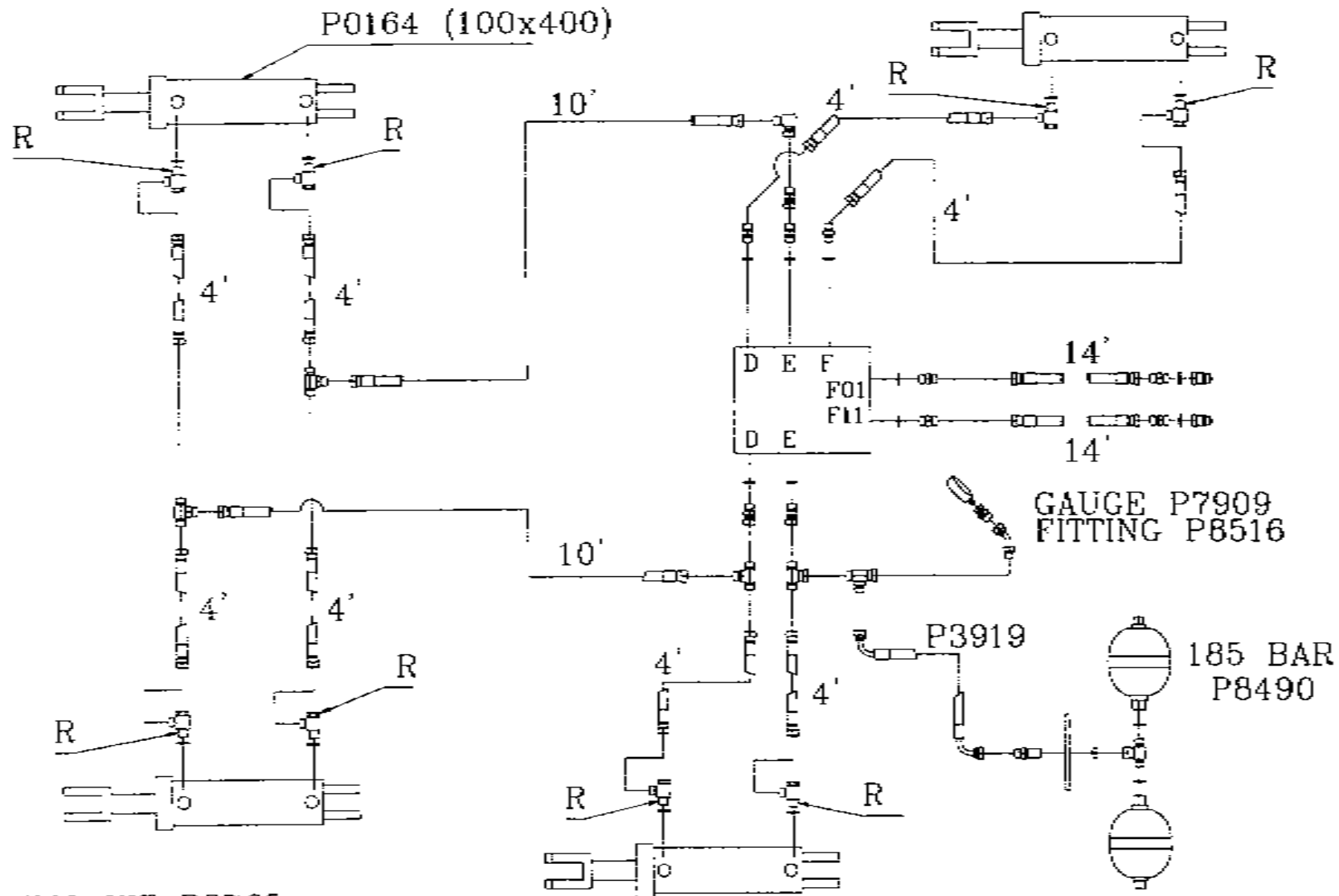


DELETIONS FROM ISSUE A  
 F0209 1/2" BSP MALE 4 WAY 1QTY  
 ADDITIONS TO ISSUE B  
 F0204 1/2" BSP MALE T 2QTY  
 P0216 1/2" BSP T ISF ON RUN 2QTY  
 28/4/99  
 TO DATE, THERE HAVE BEEN NO  
 N/C P/T ECONOMY M/C'S BUILT

HYDRAULIC KIT P8756B

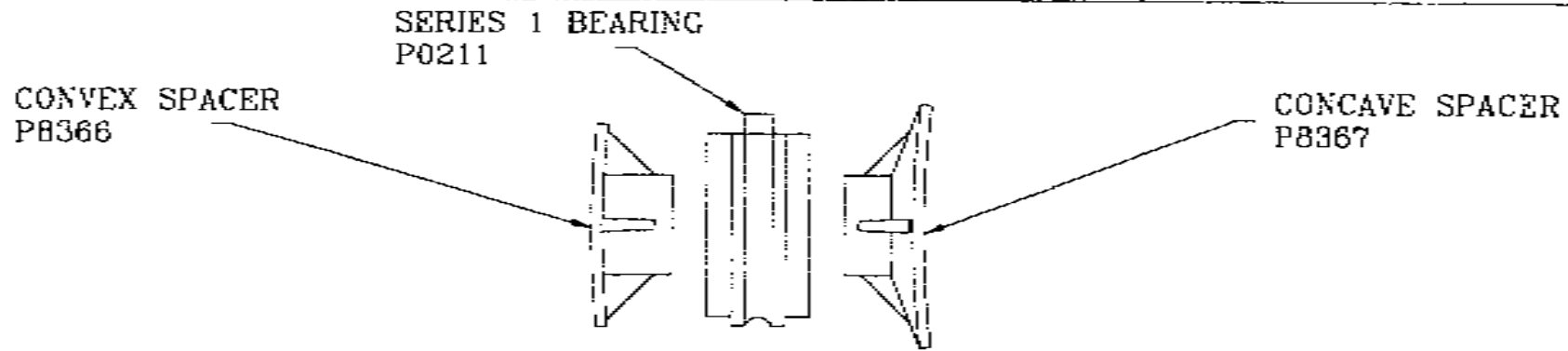
'99 SPEC. N/C F/W ECONOMY DISC-LIFT HYDRAULICS	UPDATED	FROM SERIAL NO	TO SERIAL NO.	ISSUE	DRAWING NO
	15/4/99			B	AS0568

R = RESTRICTED

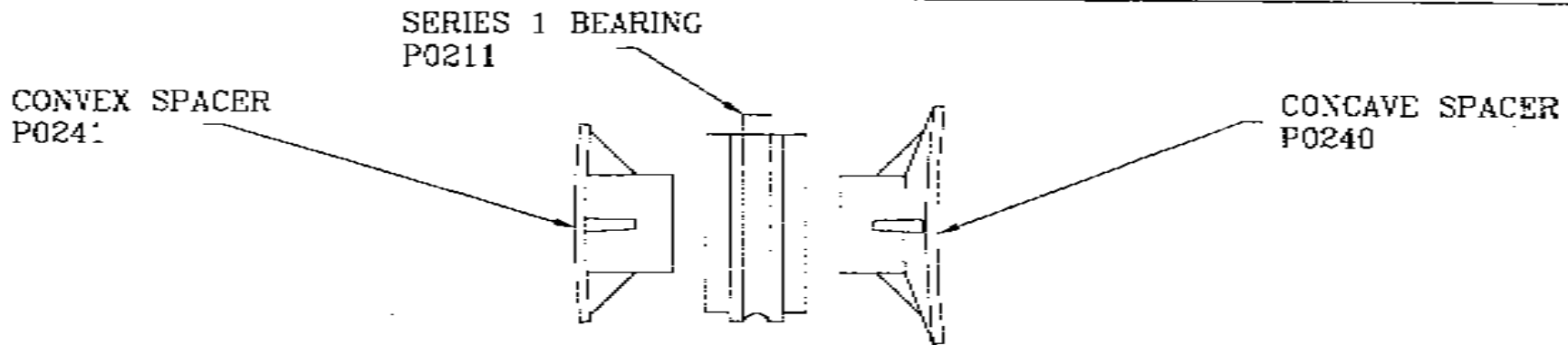


HYDRAULIC KIT P8765  
 MANIFOLD P8472 SEE SAFETY INFORMATION

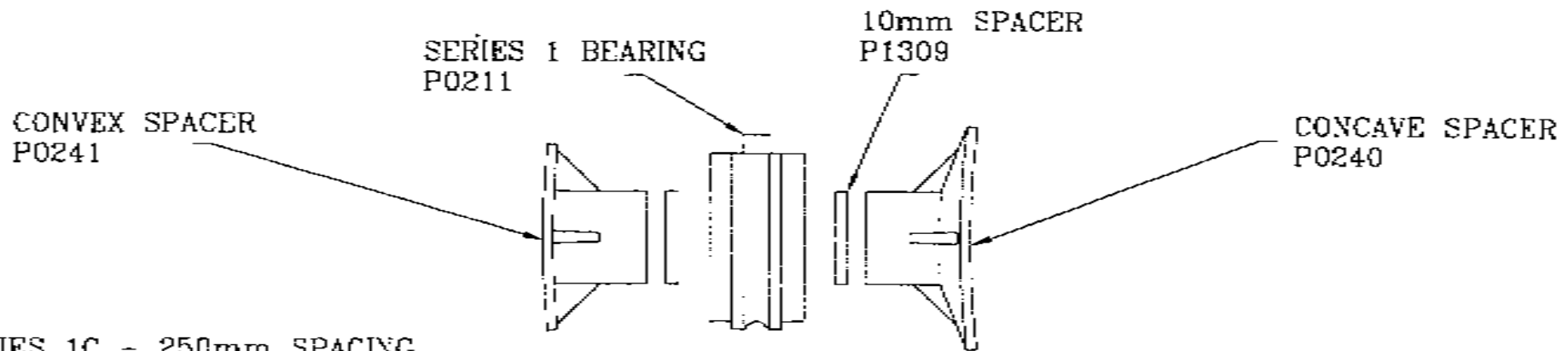
'99 SPEC. N/C F/W ECONOMY DISC- WING HYDRAULICS	UPDATED	FROM SERIAL NO.	TO SERIAL NO.	ISSUE	DRAWING NO.
	2/2/99			A	AS0567



SERIES 1A - 200mm SPACING



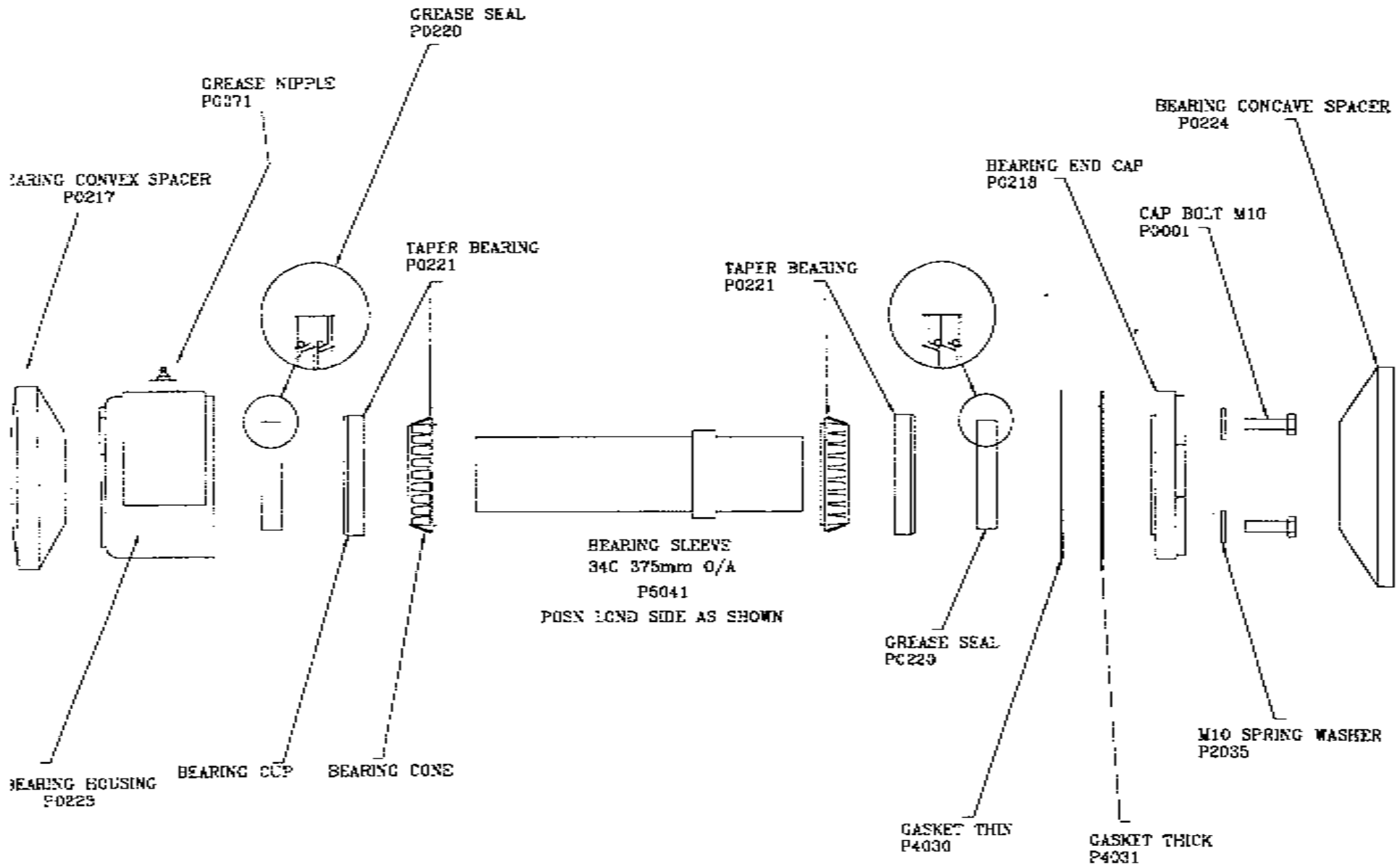
SERIES 1B - 230mm SPACING



SERIES 1C - 250mm SPACING

SERIES 1 BEARING - SPACER BUILD UP

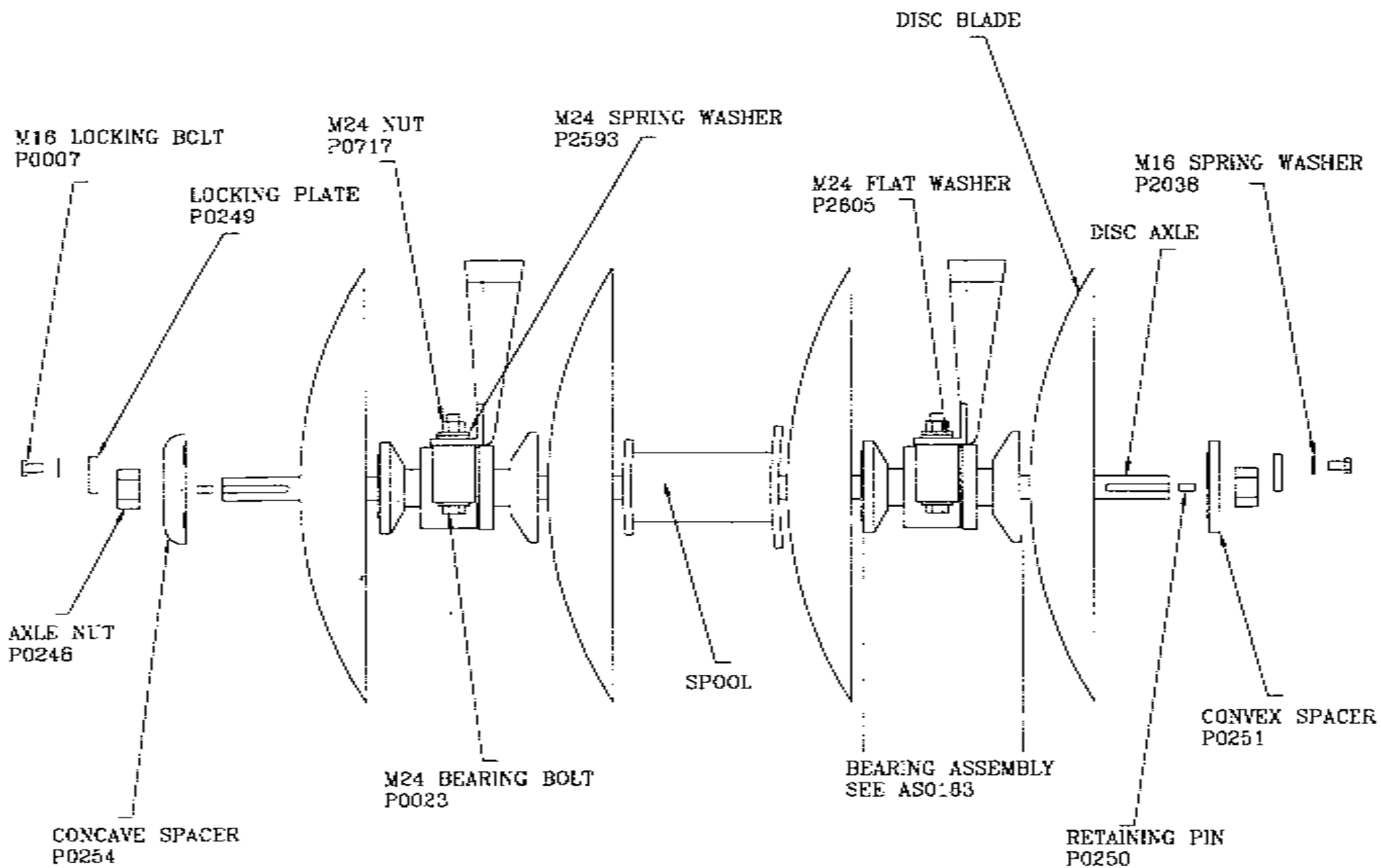
DATE	PART NUMBER	FROM SERIAL NO.	TO SERIAL NO.	ISSUE	DRAWING NO.
20/3/98 UPDATED					A AS0494



34C SERIES BEARING COMPLETE P5039

34C SERIES BEARING HOUSING ASSEMBLY

UPDATED	FROM SERIAL NO.	TO SERIAL NO.	ISSUE	DRAWING NO.
9/2/98	7272	PRS	1	AS0335



SERIES 2, 3, 23C, 34C DISC AXLE GENERAL ASSEMBLY

UPDATED

9/2/98

FROM SERIAL NO.

ALL

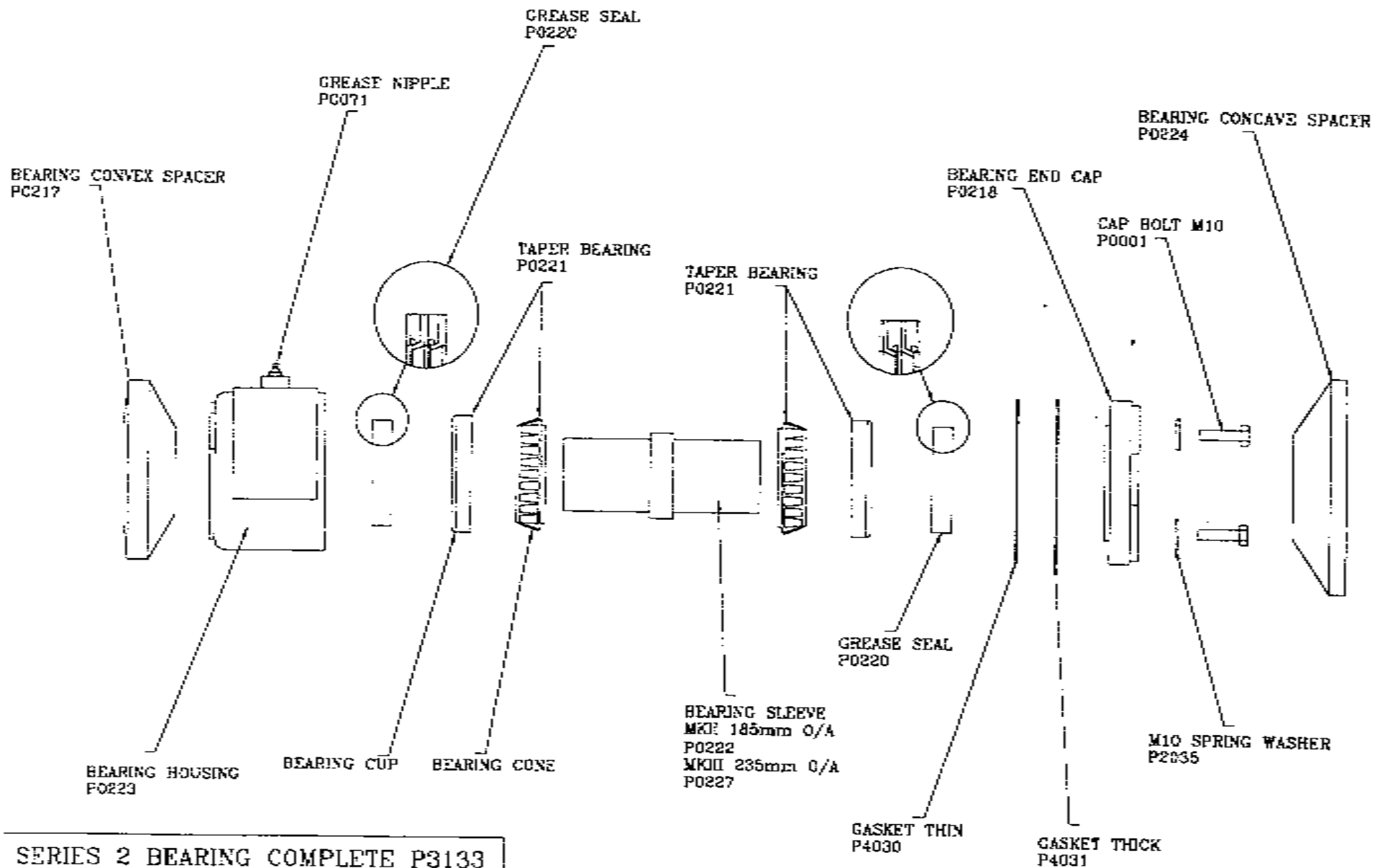
TC SERIAL NO

ISSUE

1

DRAWING NO

AS0182



SERIES 2 BEARING COMPLETE P3133

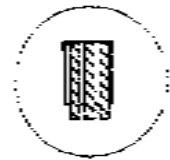
SERIES 3 BEARING COMPLETE P3134

SERIES 2, 3, 23C BEARING HOUSING ASSEMBLY

UPDATED	FROM SERIAL NO.	TO SERIAL NO.	ISSUE	DRAWING NO.
9/2/98	ALL		1	AS0183



11 1997



5 - GREASE NIPPLE  
P0071



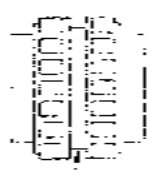
2 - BEARING HOUSING  
CASTING P0212

2 - CIRCLIP  
P0899

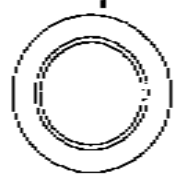
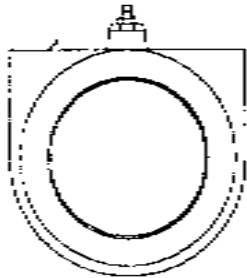
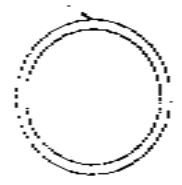
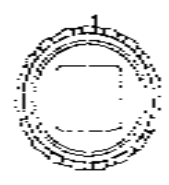
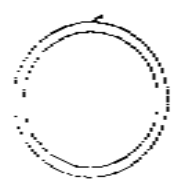
1 - GREASE SEAL  
P0213

1 - CIRCLIP  
P0899

2 - BEARINGS & SLEAVE  
P0211



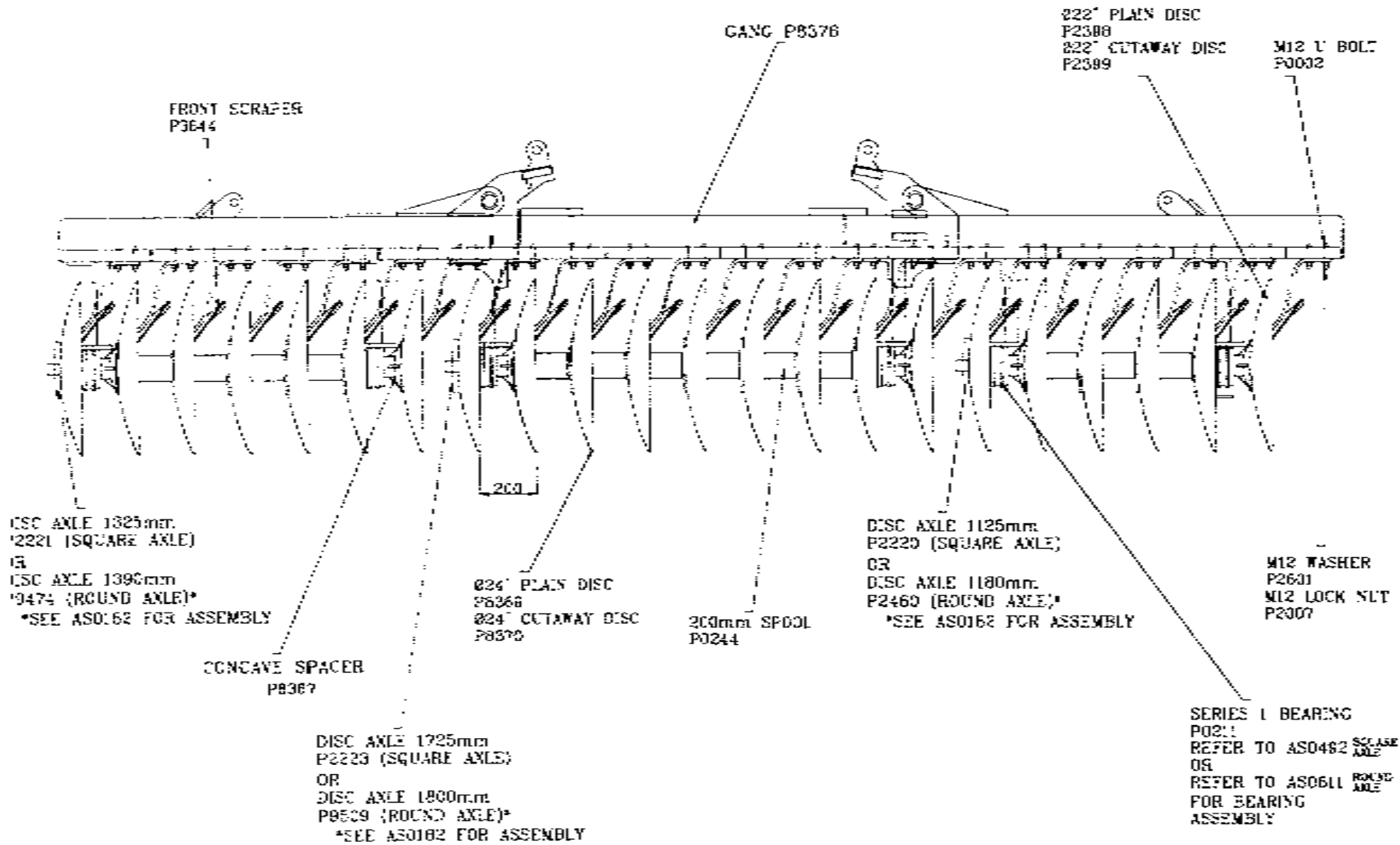
1 - BEARING HOUSING  
CASTING P0212



REV	DESCRIPTION	PART NUMBER	FROM SERIAL NO.	TO SERIAL NO.	ISSUE	DRAWING NO.
1	ORIGINAL					AS0-192
2	REVISED					
3	REVISED					
4	REVISED					
5	REVISED					

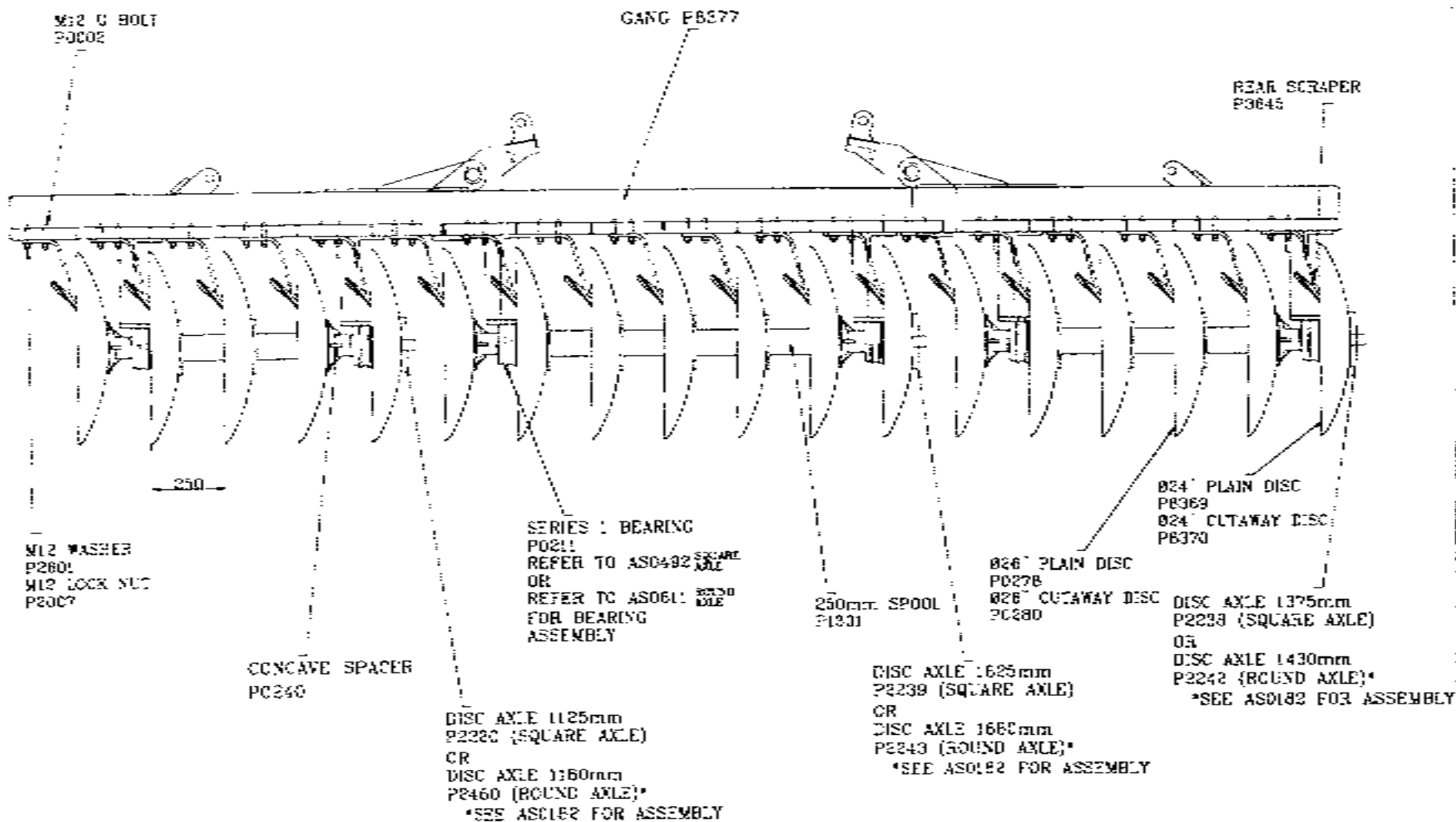






12C F/W DISC 14'6" FRONT GANG

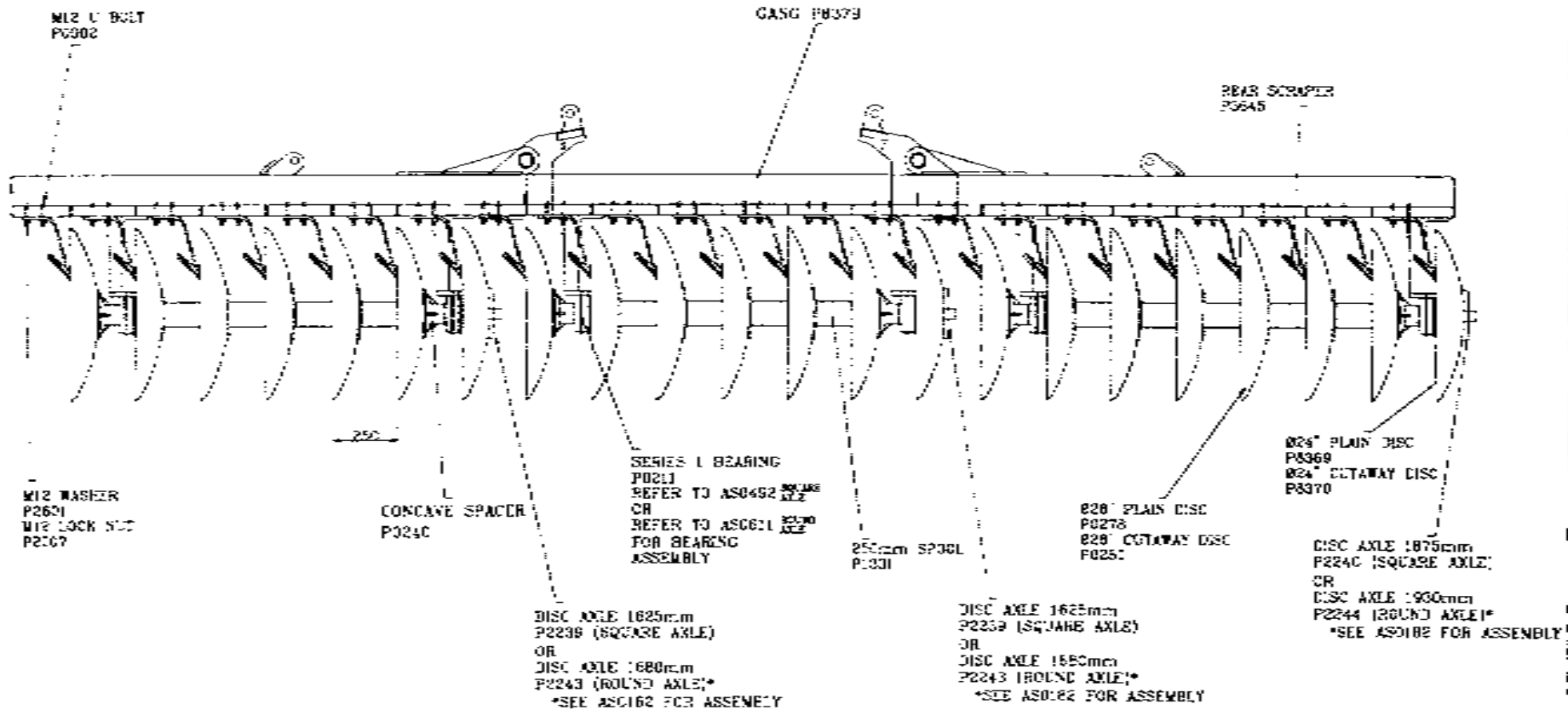
DRAWN 02/05/00 UPDATED	PART NUMBER	FROM SERIAL NO.	TO SERIAL NO.	ISSUE	DRAWING NO. <b>AS0504</b>
------------------------------	-------------	-----------------	---------------	-------	------------------------------



12C F/W DISC 14"6" REAR GANG

DRAWN 02/05/00 UPDATED	PART NUMBER	FROM SERIAL NO TO SERIAL NO.	ISSUE DRAWING NO.
------------------------------	-------------	------------------------------	-------------------

AS0505

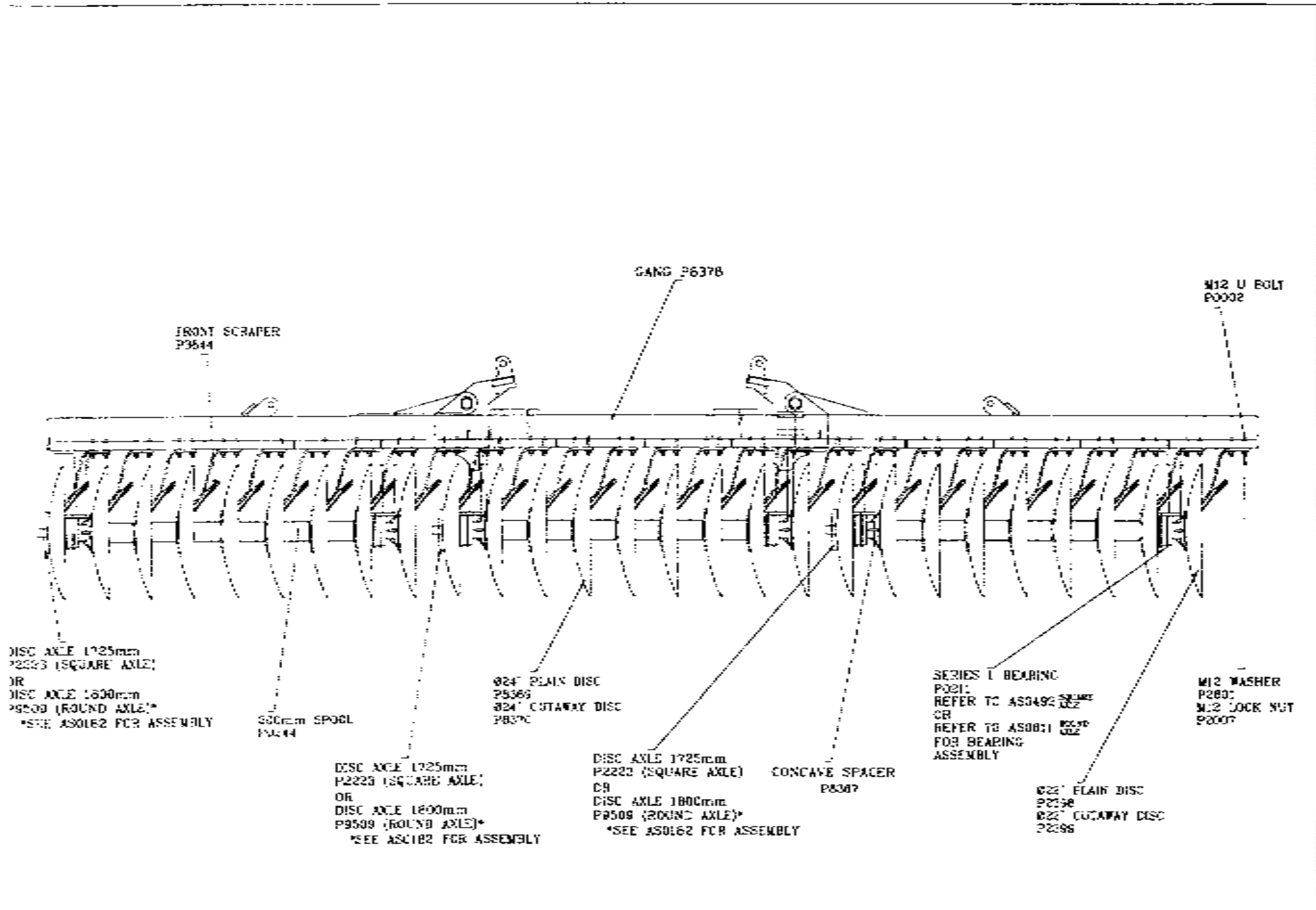


120 F/W DISC 17'6" REAR GANG

ISSUED  
02/03/02  
UPDATED

PART NUMBER FROM SERIAL NO TO SERIAL NO ISSUE DRAWING NO

AS0507

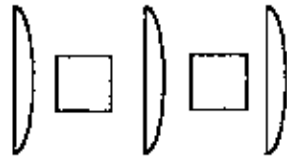


12C F/W DISC 17'6" FRONT GANG

DRAWN 02/05/02 UPDATED	PART NUMBER	FROM SERIAL NO TO SERIAL NO.	ISSUE	DRAWING NO.
				AS0506

**S2/3 - 14' NC REAR GANG**

BLADES	SPACING	SPOOLS	SCRAPERS	BEARINGS
Ø30 - 14	300MM	P0257 - 6	P0895 - 15	P0226 - 6
Ø28 - 1				



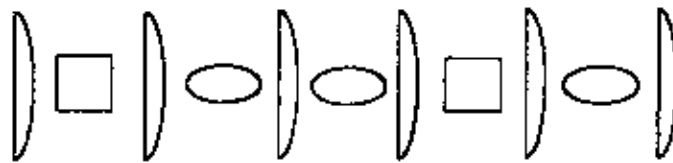
760MM

LH WING



1660MM

CTR



1660MM

RH WING

VIEWED FROM REAR

**S2/3 - 14' NC FRONT GANG**

BLADES	SPACING	SPOOLS	SCRAPERS	BEARINGS
Ø28 - 16	250MM	P0253 - 8	P0894 - 17	P0216 - 6
Ø26 - 1				



1180MM

LH WING



1680MM

CTR



1180MM

RH WING

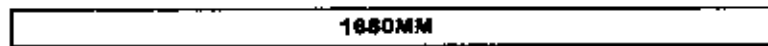
VIEWED FROM REAR

**S2/3 - 18' NC FRONT GANG**

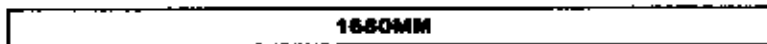
<b>BLADES</b>	<b>SPACING</b>	<b>SPOOLS</b>	<b>SCRAPERS</b>	<b>BEARINGS</b>
<b>Ø28 - 20</b>	<b>250MM</b>	<b>P0253 - 12</b>	<b>P0894 - 21</b>	<b>P0216 - 6</b>
<b>Ø26 - 1</b>				



**LH WING**



**CTR**

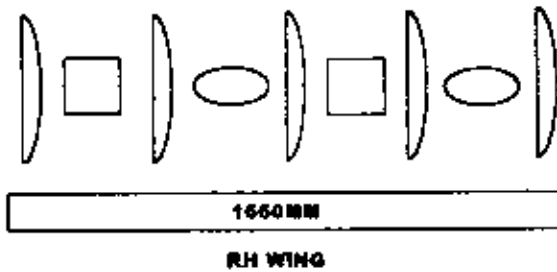
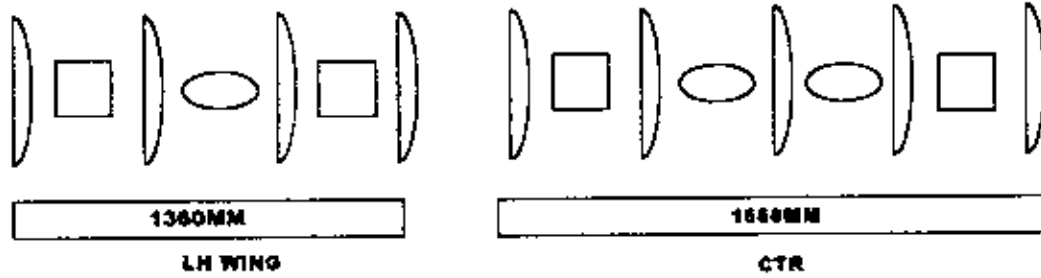


**RH WING**

**VIEWED FROM REAR**

**S3/4 - 16' NC REAR GANG**

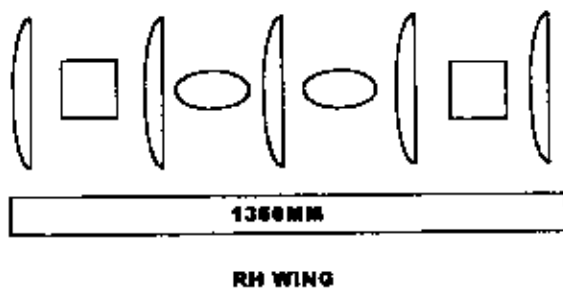
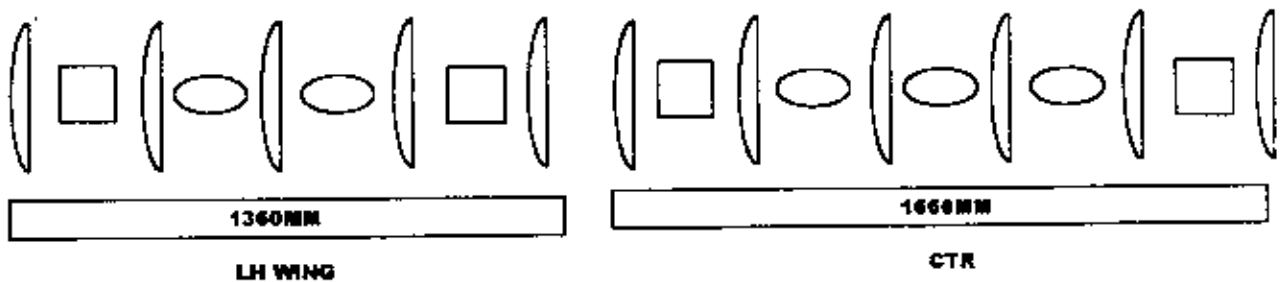
BLADES	SPACING	SPOOLS	SCRAPERS	BEARINGS
Ø32 - 13	375MM	P5041 - 5	P7430 - 14	P5039 - 6
Ø30 - 1				



VIEWED FROM REAR

**S3/4 - 16' NC FRONTGANG**

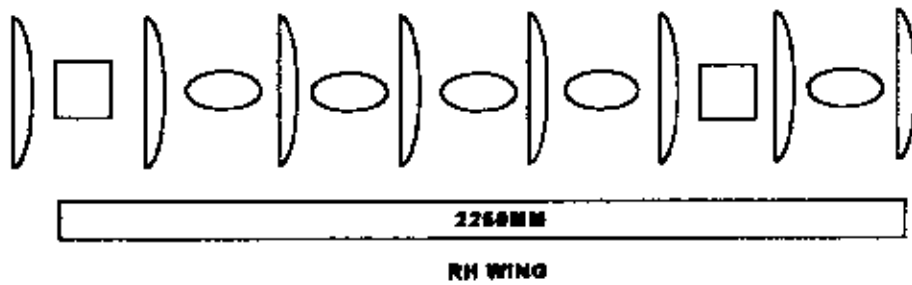
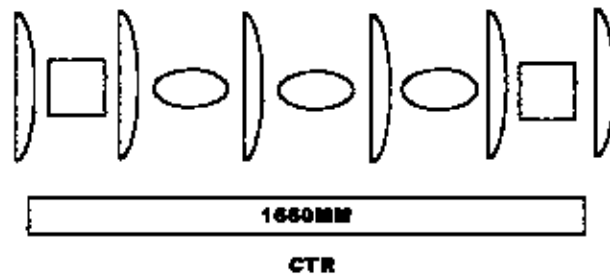
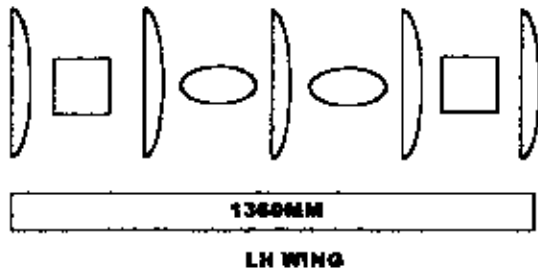
BLADES	SPACING	SPOOLS	SCRAPERS	BEARINGS
Ø30 - 15	300MM	P0257 - 7	P0894 - 16	P0226 - 6
Ø28 - 1				



VIEWED FROM REAR

**S2/3 - 18' NC REAR GANG**

<b>BLADES</b>	<b>SPACING</b>	<b>SPOOLS</b>	<b>SCRAPERS</b>	<b>BEARINGS</b>
<b>Ø30 - 18</b>	<b>300MM</b>	<b>P0257 - 10</b>	<b>P0895 - 19</b>	<b>P0226 - 6</b>
<b>Ø28 - 1</b>				



**VIEWED FROM REAR**