



# *Freeflow Parts List*

## *General Assemblies*

Drawbar  
Rails & Platforms  
Leading Tines  
Coulter Tines  
Pre-Emergence Markers

## *Rolls*

Front Rolls  
Rear Rolls  
Wire Rope Scrapers  
Sprung Leaf Coverers

## *Rear Harrow*

Weeder Tines  
Toplink Mounting

## *Depth Control*

Hydraulic Depth Adjuster  
Rear Depth Control Bolt

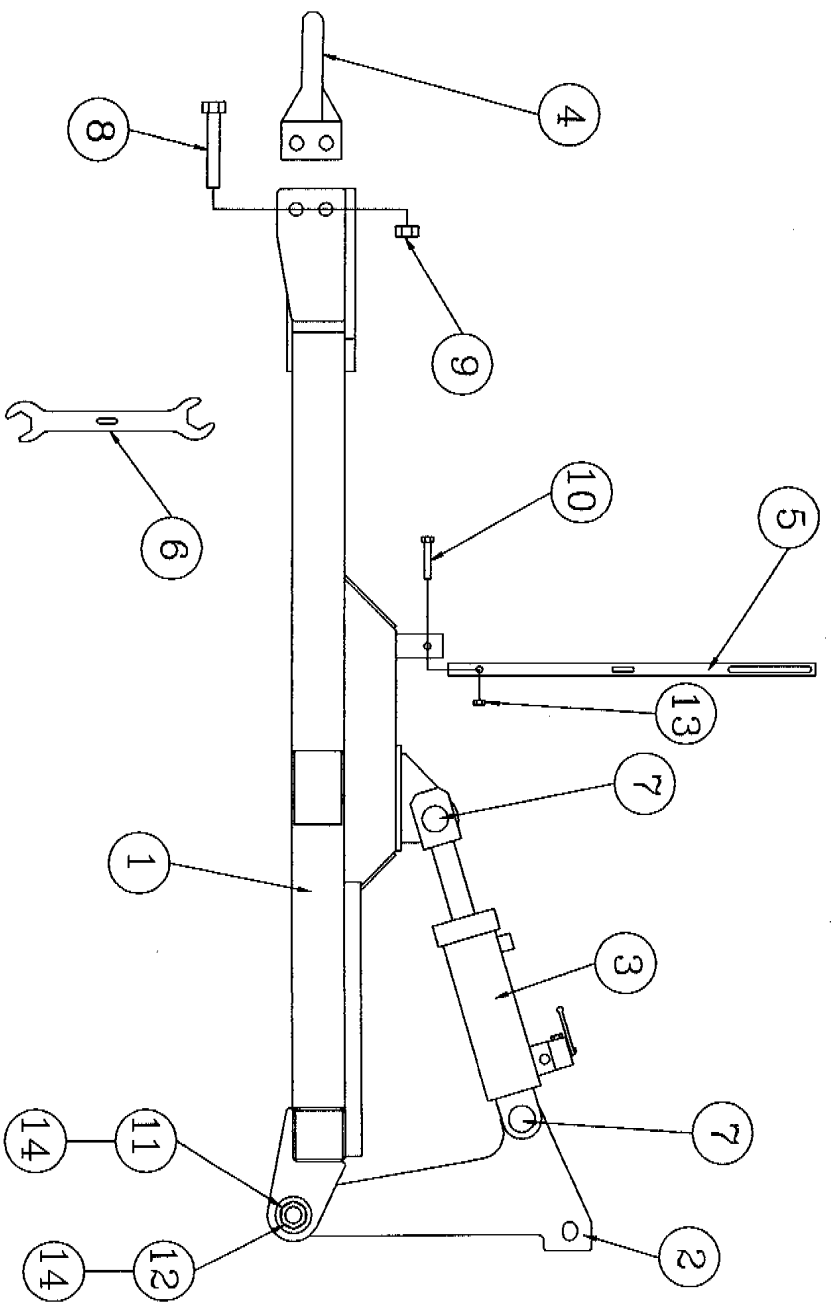
## *Hopper*

Tramlining  
Calibration  
Agitator Shafts  
Crary Fan

## *Other Parts*



SP0720		4+4.5m Folding Wing Freeflow Drawbar	
Ref. No.	Part No.	Description	Qty.
1	P09577	DRAWBAR	1
2	P09578	RAMPOST	1
3	P08137	3.75" x 210 CYLINDER	1
4	P08997	PERFECT HITCH CAT3	1
5	P08658	HOSE MAST	1
6	P05640	SPANNER	1
7	P01274	PIN Ø25x115	2
8	P08458	UNF BOLT 1"x7"	2
9	P05492	UNF LOCK Nut 1"	2
10	P03090	BOLT M12x70	1
11	P00036	BOLT M30x180	2
12	P00983	BOLT M30x150 (RAMPOST BOLT)	1
13	P02007	M12 LOCK NUT	1
14	P02011	M30 LOCK NUT	3



4.0m & 4.5m F/W FREEFLOW - DRAWBAR

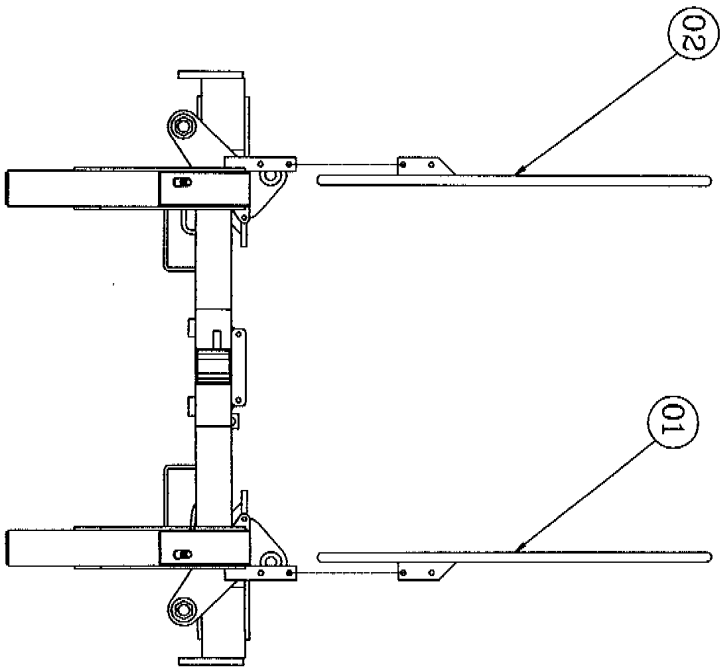
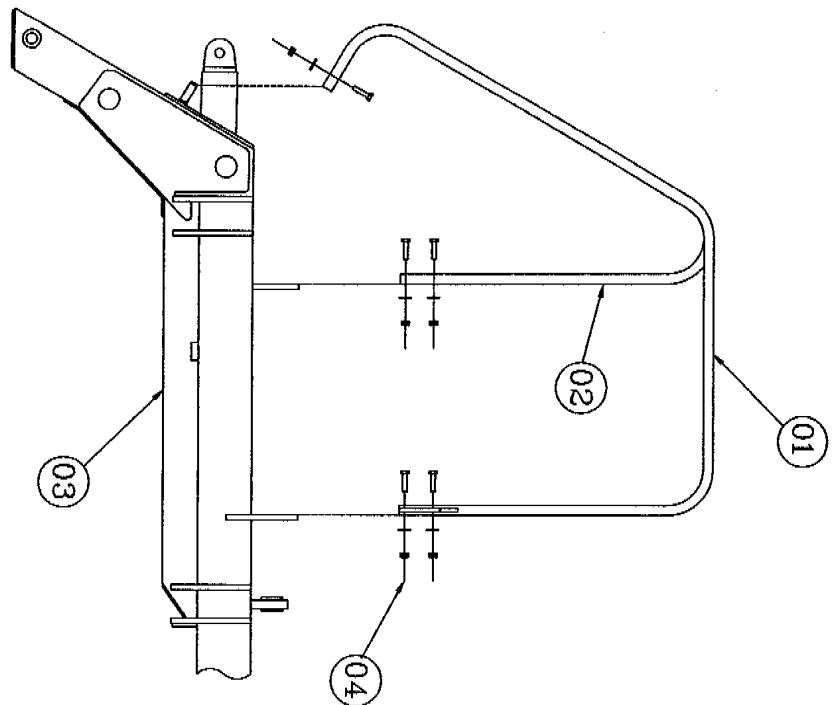
DRAWN: EN/07/00  
 PART NUMBER: FROM SERIAL NO. TO SERIAL NO.  
 ISSUE: DRAWING NO. SP0720



### 4+4.5m Freeflow Grab Rails

SP0722

Ref. No.	Part No.	Description	Qty.
1	P09583	GRAB RAIL R/H	1
2	P09582	GRAB RAIL L/H	1
3	P09579	CHASSIS (FOR ILLUSTRATION PURPOSES)	-
4	P03087	M12x50 BOLT	6
	P02601	M12 WASHER	6
	P02007	M12 LOCK NUT	6



4.0m & 4.5m F/W FREEFLOW GRAB RAIL LOCATION

DESIGN  
09/03/00  
UPDATED

PART NUMBERS

FROM SERIAL NO.

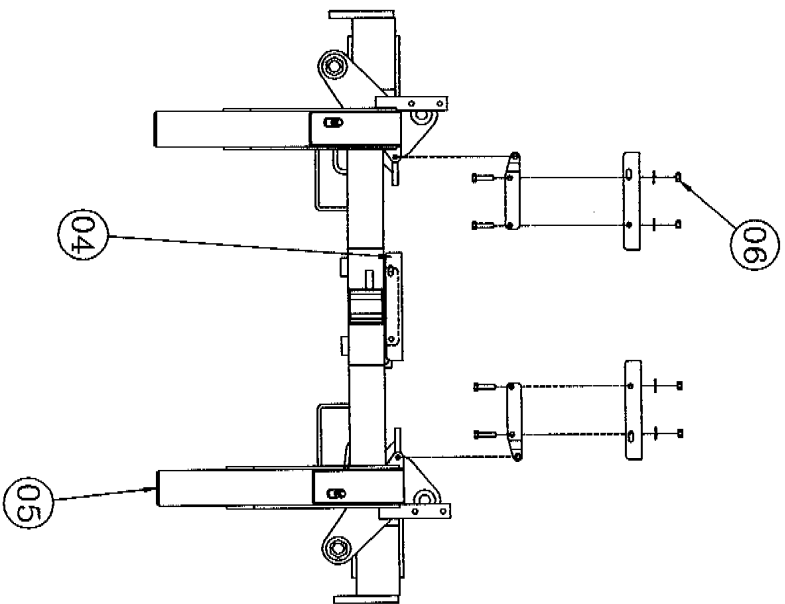
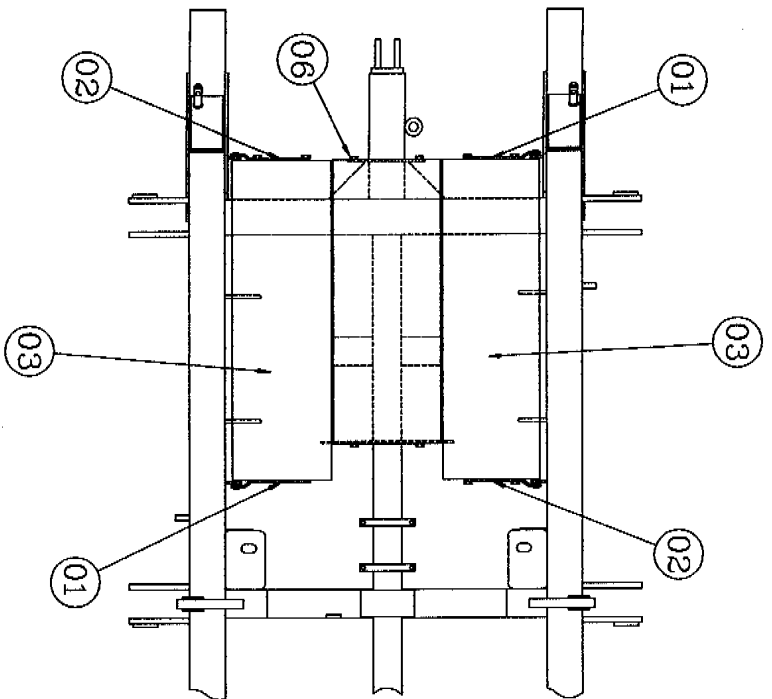
TO SERIAL NO.

ISSUE

DRAWING NO.  
SP0722



SP0723		4+4.5m Chassis Platforms	
Ref. No.	Part No.	Description	Qty.
1	P09587	PLATFORM HINGE R/H	2
2	P09586	PLATFORM HINGE L/H	2
3	P09435	GALVANISED PLATFORM (900mm x 275mm)	2
4	P09434	GALVANISED PLATFORM (800mm X 300mm)	1
5	P09579	CHASSIS	-
6	P03087	M12x50 BOLT	16
	P02601	M12 WASHER	16
	P02007	M12 LOCK NUT	16



4.0m & 4.5m F/W FREEFLOW - CHASSIS PLATFORMS

DRAWN  
09/05/00  
OPERATED

PART NUMBER

FROM SERIAL NO.

TO SERIAL NO.

ISSUE

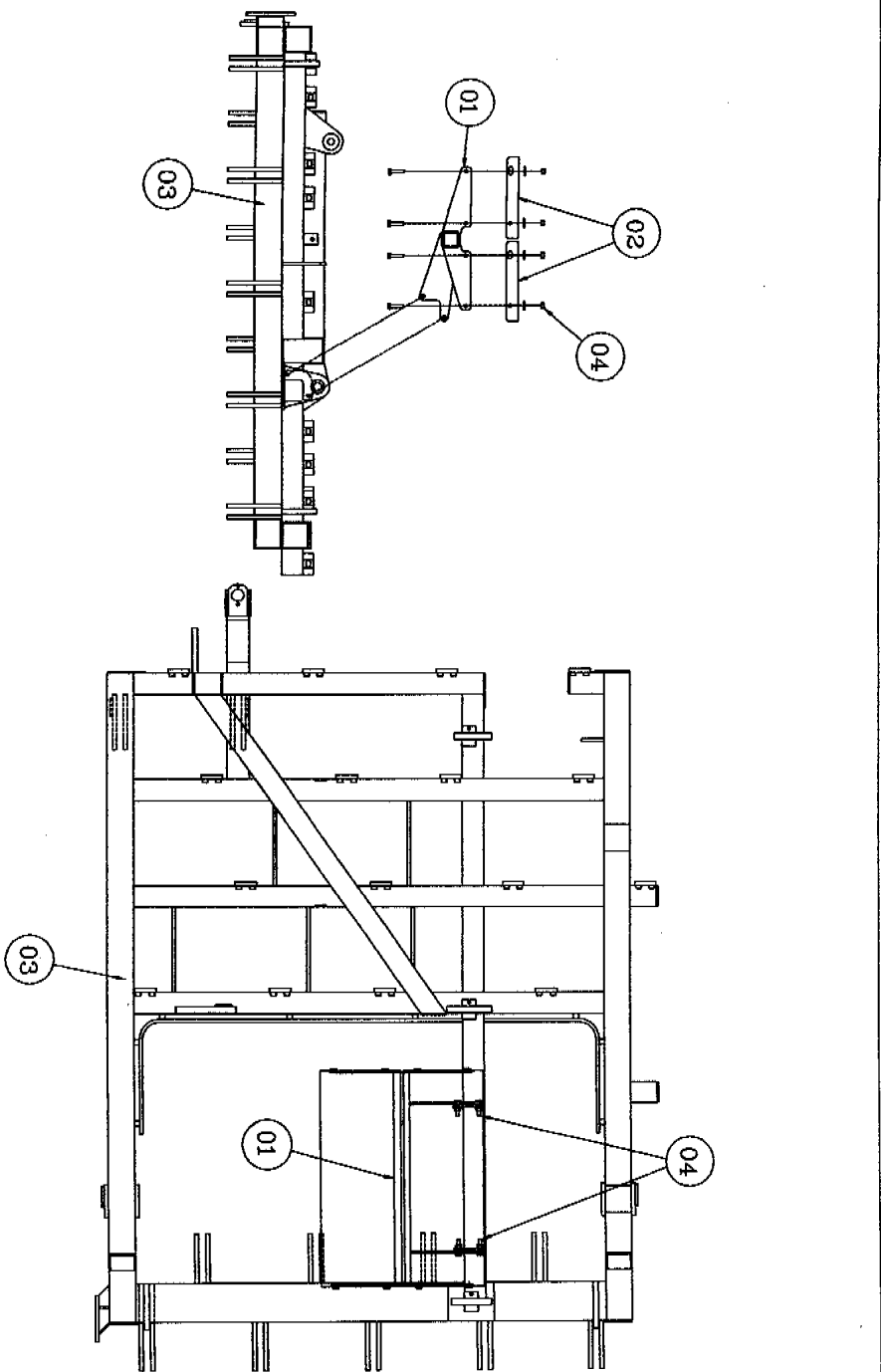
DRAWING NO.  
SP0723



### 4+4.5m Wing Platforms

SP0724

Ref. No.	Part No.	Description	Qty.
1	P09584	SIDE PLATFORM	1
2	P09434	GALVANISED PLATFORM	2
3	P09745	4m WING R/H	-
	P09636	4.5m WING R/H	-
4	P03087	M12x50 BOLT	12
	P02601	M12 WASHER	12
	P02007	M12 LOCK NUT	12



4.0m & 4.5m F/W FREEFLOW - WING PLATFORM

DRAWN  
08/05/00  
UPDATED

PART NUMBERS

FROM SERIAL NO.

TO SERIAL NO.

ISSUE

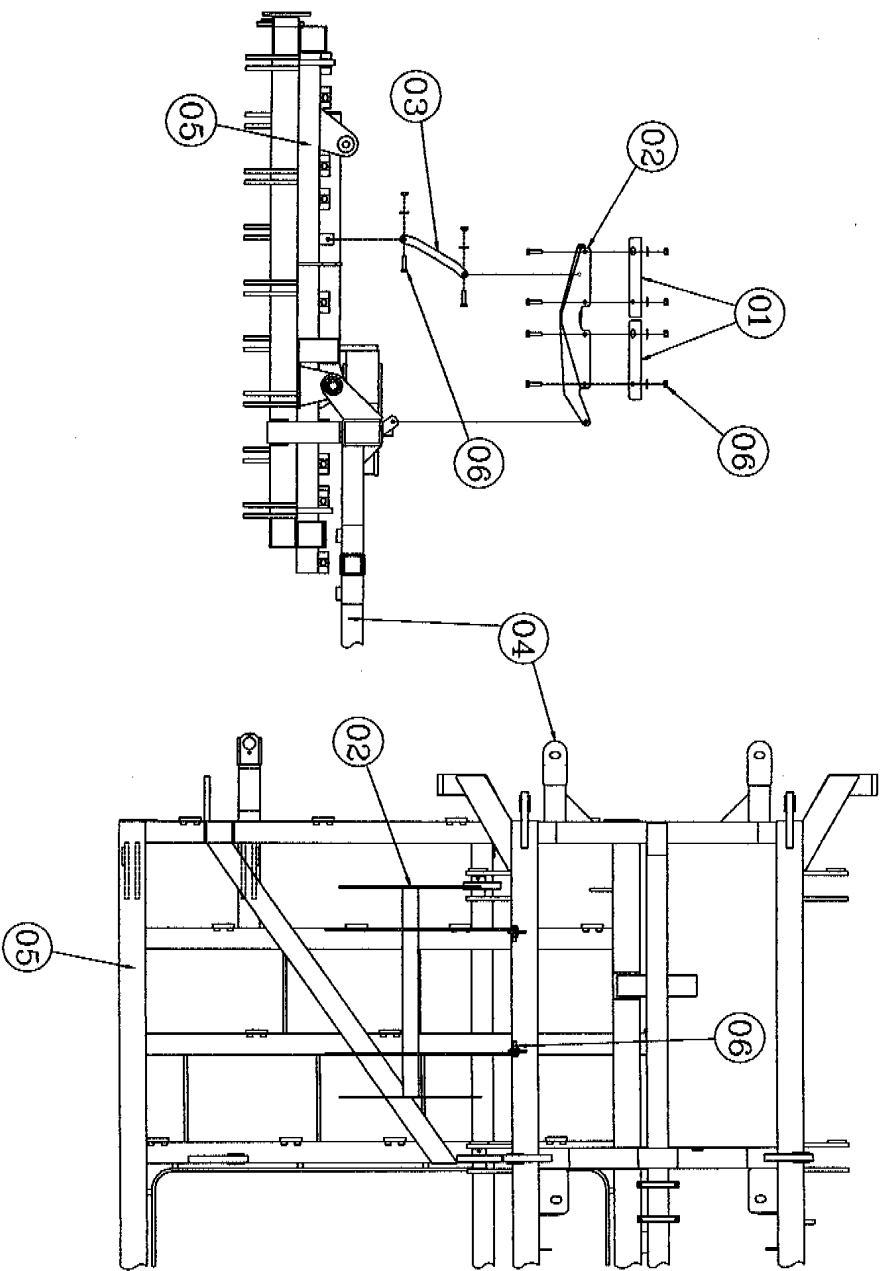
DRAWING NO.  
SP0724



### 4+4.5m Rear Wing Platforms

SP0725

Ref. No.	Part No.	Description	Qty.
1	P09434	GALVANISED PLATFORM	2
2	P09585	SIDE PLATFORM	1
3	P09588	PLATFORM STRAP	2
4	P09579	CHASSIS	-
5	P09745	4m WING R/H	-
	P09636	4.5m WING R/H	-
6	P03087	M12x50 BOLT	14
	P02601	M12 WASHER	14
	P02007	M12 LOCK NUT	14



4.0m & 4.5m F/W FREEFLOW - REAR WING PLATFORM

DRAWN  
09/06/00  
UPDATED

PART NUMBER

FROM SERIAL NO. TO SERIAL NO.

ISSUE

DRAWING NO.  
SP0725

FREEFLOW - LEADING TINE ASSEMBLY

DRAWN  
28/02/08  
UPDATED

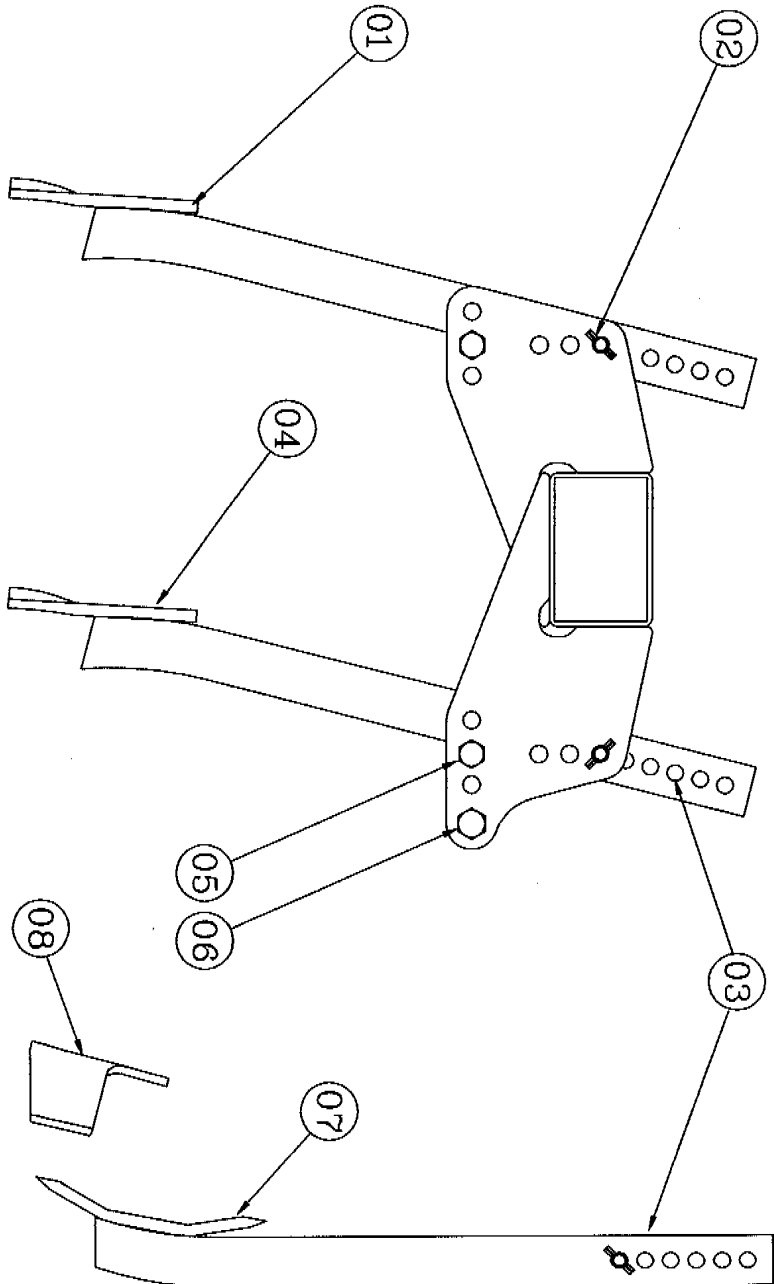
PART NUMBER

PROJ SERIAL NO.

TO SERIAL NO.

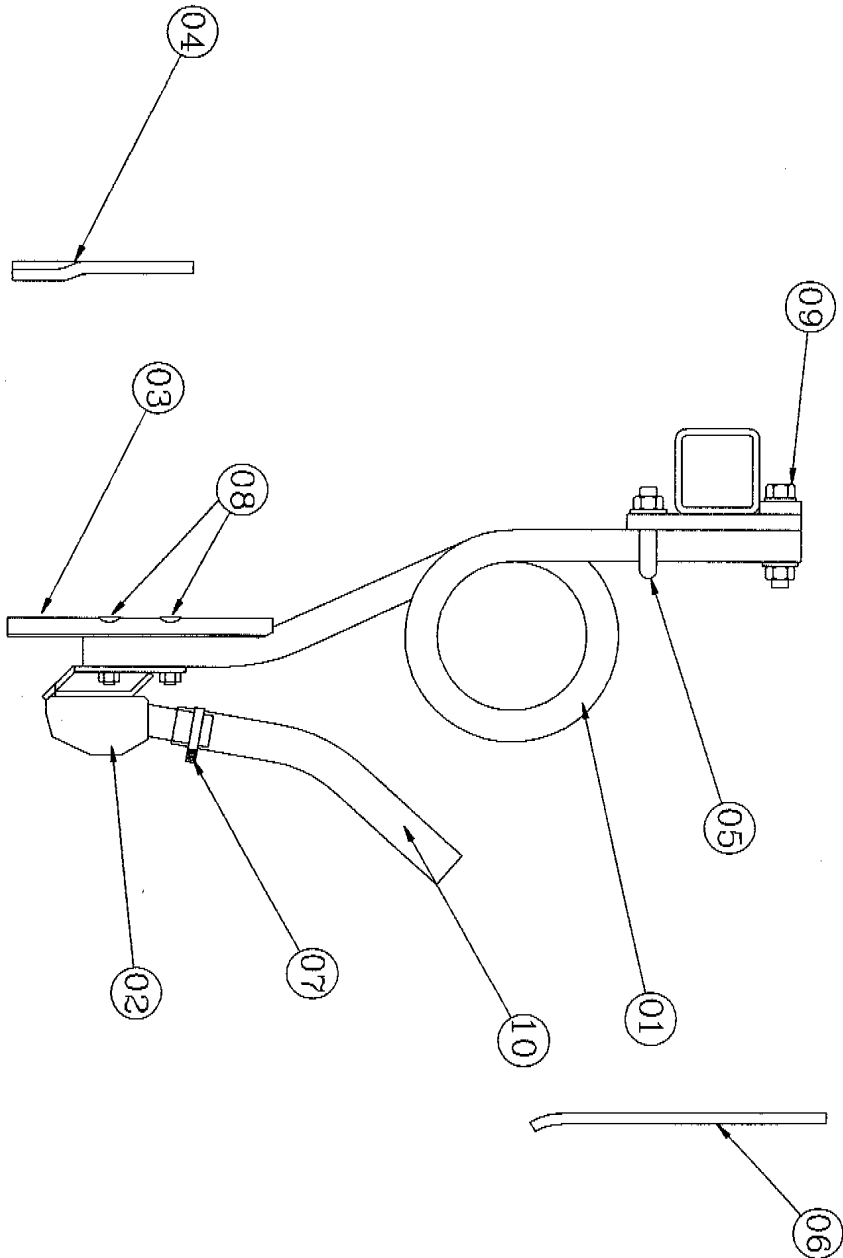
ISSUE

DRAWING NO.  
SP0015



SP0015		Leading Tine Assembly		<b>SIMBA</b>	
Ref. No.	Part No.	Description	M/C Qty. 4m	M/C Qty. 4.5m	
1	P05860	STANDARD POINT	19	21	
2	P05207	Ø16 PIN	19	21	
	P02485	R CLIP	19	21	
3	P05533	2"x1" TINE	19	21	
4	P03448	7/16"x75 CSK BOLT	38	42	
	P07131	7/16" LOCK NUT	38	42	
5	P05103	M16 NOTCHED SHEAR BOLT	19	21	
	P02038	M16 SPRING WASHER	19	21	
	P01358	M16 PLAIN NUT	19	21	
6	P10499	M20x90 BOLT WITH 55mm SHANK	8	12	
	P02603	M20 WASHER	8	12	
	P02009	M20 LOCK NUT	8	12	
7	P03017	1 ½" REVERSIBLE POINT	19	21	
8	P07965	LEVELLING POINT	19	21	

COULTER TINE ASSEMBLY



DRAWING  
28/2/27  
UPDATED

PART NUMBER

FROM SERIAL NO.

TO SERIAL NO.

ISSUE

DRAWING NO.  
SP0008

SP0008

4+4.5m F/W Coultter Tine Assembly



Ref. No.	Part No.	Description	Qty.
1	P09514	COULTER TINE R/H	16
	P09515	COULTER TINE L/H	16
2	P08835	COULTER	32
3	P09575	STANDARD REVERSIBLE POINT	32
4	P05860	BROAD POINT	32
5	P03744	M16 REF 19 U BOLT	32
	P02602B	M16 FLAT WASHER	96
	P02008	M16 LOCK NUT	96
6	P08014	HELPER SPRING	32
7	P05798	HERBIE CLIP SIZE Q	32
8	P3095	7/16" UNCx60 BOLT	62
	P07131	7/16" LOCK NUT	64
9	P05263	M16 ECCENTRIC BOLT	32
	P02602B	M16 FLAT WASHER	96
	P02008	M16 LOCK NUT	96
10	P09674	SEED HOSE (PER METRE)	-





### 4+4.5m Freeflow Wing Bump Stop

SP0154

Ref. No.	Part No.	Description	Qty.
1	P02011	M30 LOCK NUT	4
2	P02608	M30 FLAT WASHER	16
3	P03471	M30x80 BOLT	4
4	P07546	PLASTIC END CAP	4

4+4.5M F/W FREEFLOW - WING BUMP STOP

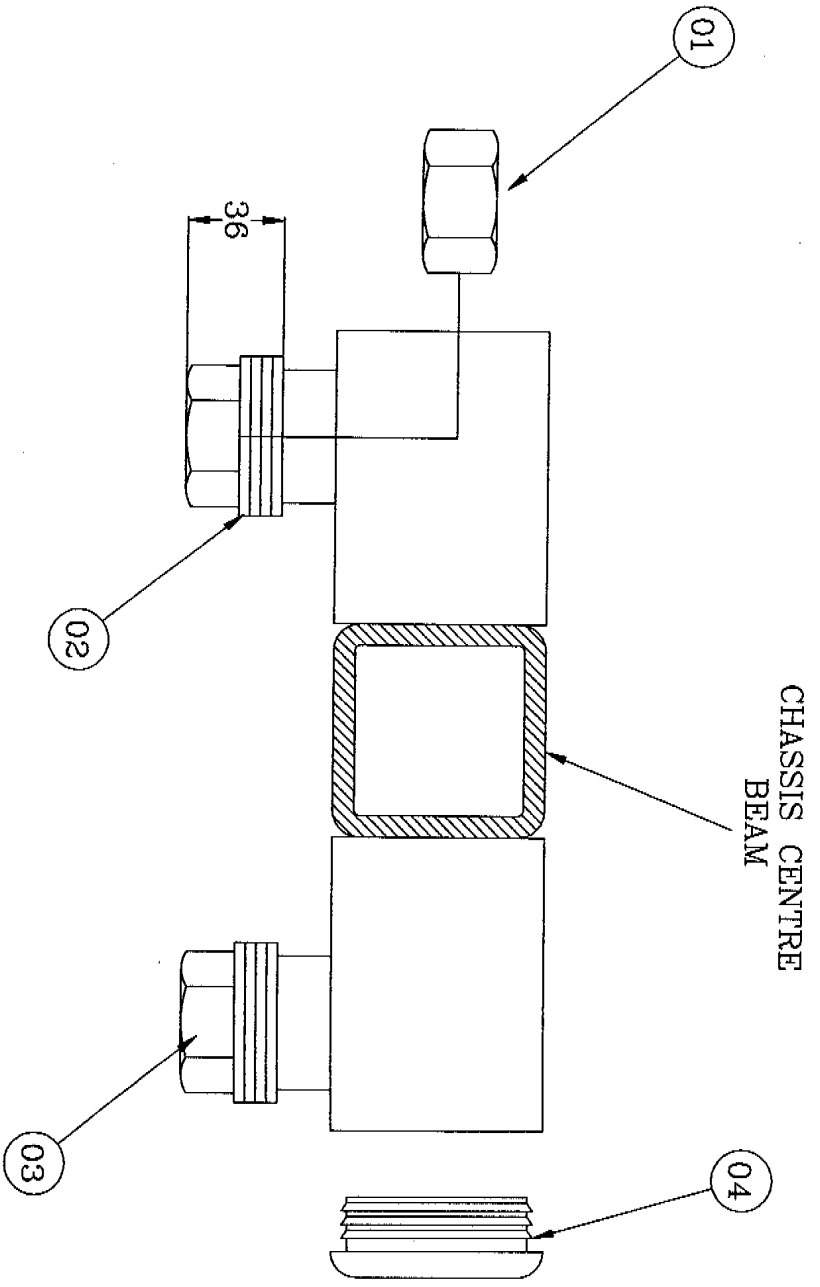
90/10/87

FROM SERIAL NO.

TO SERIAL NO.

ISSUE

DRAWING NO.  
SP0154



4+4.5m F/W FREEFLOW PRE-EMERGENCE MARKERS

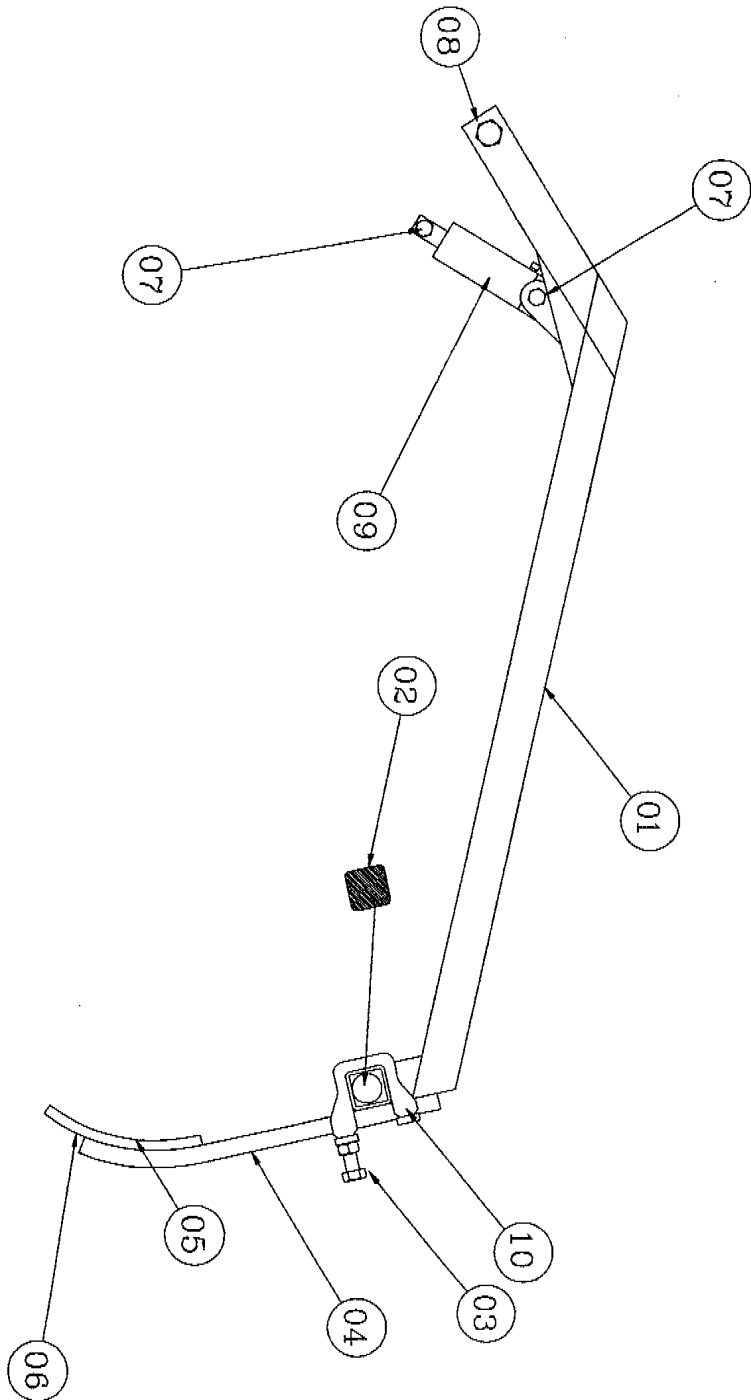
UPDATED  
30/10/07

FROM SERIAL NO.

TO SERIAL NO.

ISSUE

DRAWING NO.  
SP0158

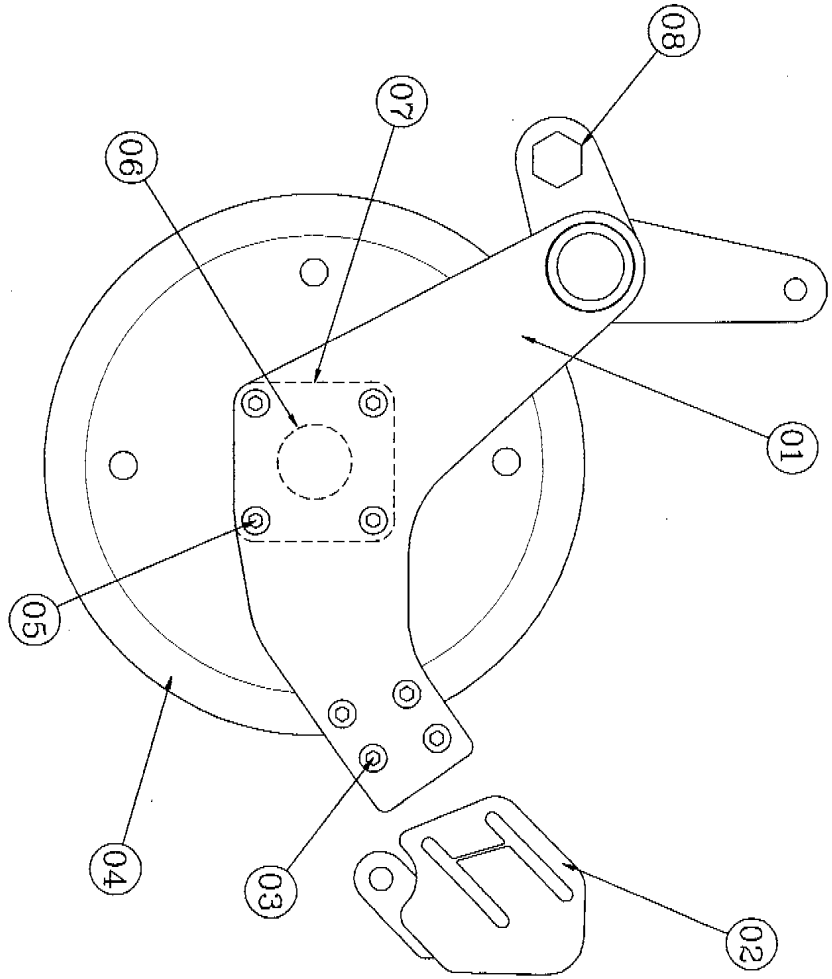


SP0158


4+4.5m F/W Pre-emergence Markers

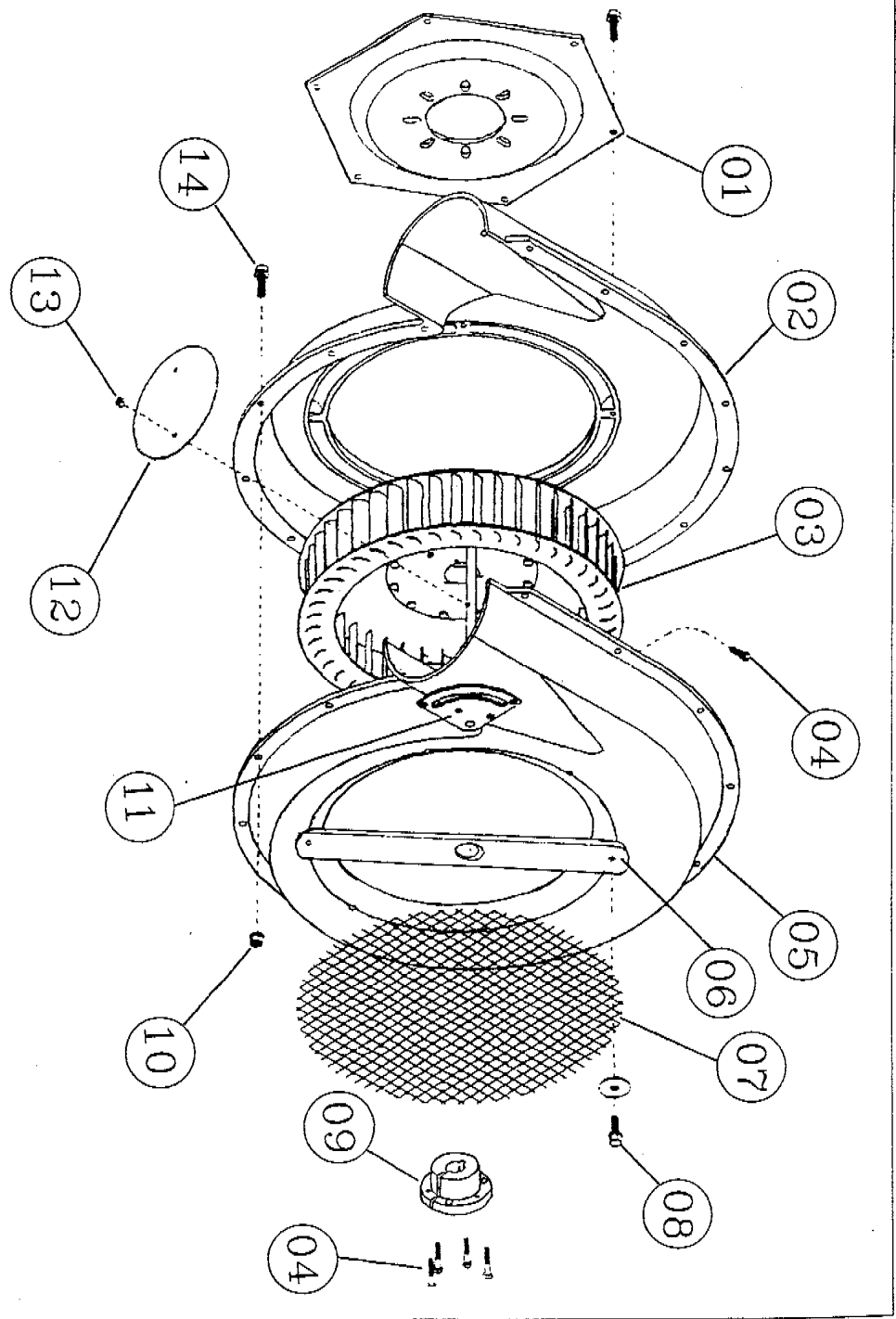


Ref. No.	Part No.	Description	Qty.
1	P06832	MARKER ARM	1
2	P07545	PLASTIC END CAP	2
3	P03115	M20x60 BOLT	2
	P01172	M20 PLAIN NUT	2
4	P02723	1"x1" SQUARE TINE	2
5	P00338	7/16"UNCx55 BOLT	4
	P07131	7/16" LOCK NUT	4
6	P04335	TWISTED POINT L/H	1
	P04336	TWISTED POINT R/H	1
7	P02318	M16x120 BOLT	2
	P02602	M16 WASHER	2
	P02008	M16 LOCK NUT	2
8	P04536	M24x130 BOLT	2
	P02604	M24 WASHER	2
	P02010	M24 LOCK NUT	2
9	P05260	HYDRAULIC CYLINDER	1
10	P03018	CLAMP	1



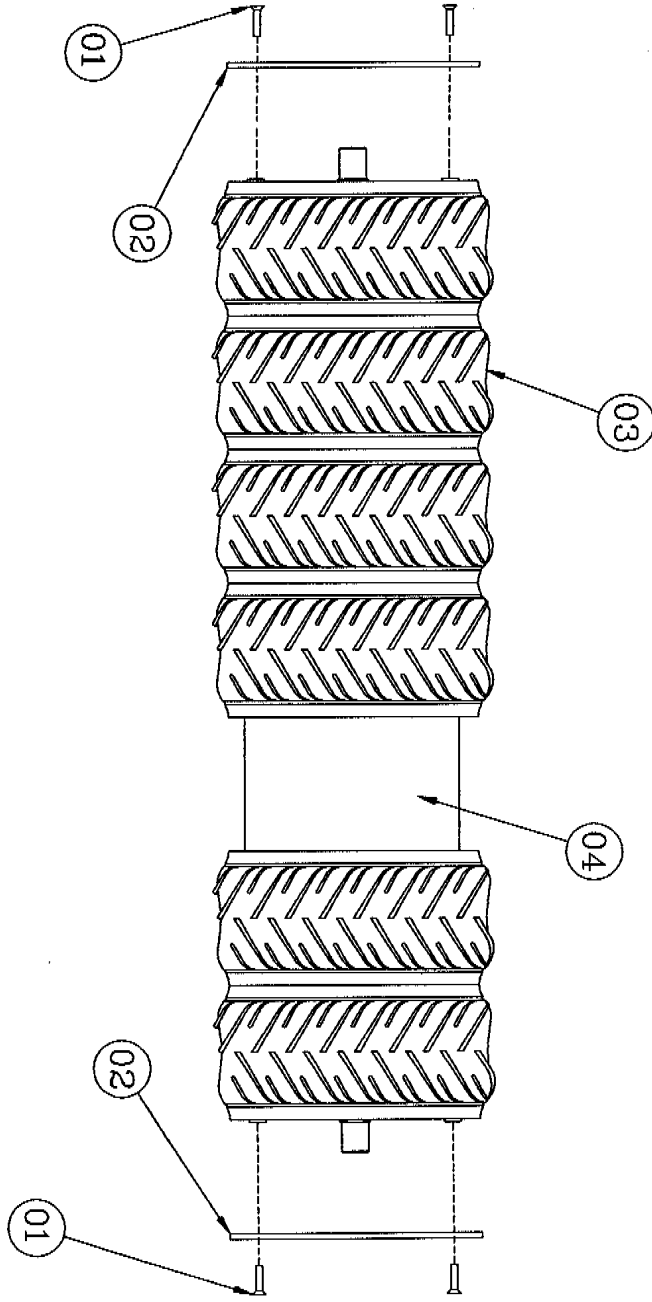
DRAWN 08/05/00  
 PART NUMBER FROM SERIAL NO. TO SERIAL NO. ISSUE  
 DRAWING NO. SP0721

SP0721		4+4.5m F/W Front Rubber Roll		
Ref. No.	Part No.	Description	M/C Qty.	M/C Qty.
			4m	4.5m
1	P11350	SIDE PLATE R/H	2	2
	P11351	SIDE PLATE L/H	2	2
2	-	SCRAPER RAIL - SEE WIRE ROPE ASSEMBLY FOR PART Nos	-	-
3	P05030	M12x55 CSK BOLT	16	16
	P02004	M12 FLAT WASHER	16	16
	P02007	M12 LOCK NUT	16	16
4	P07071	4m 18" RUBBER ROLL	1	1
	P07075	4.5m 18" RUBBER ROLL	1	1
	P09618	4m 20" OTICO ROLL	1	1
	P09708	4.5m 20" OTICO ROLL	1	1
5	-	SEE ITEM #3	-	-
6	P05026	NYLON SPACER	2	2
7	P04204	SCJ 50 BEARING	2	2
	P04202	CASTING	2	2
	P00036	M30x180 BOLT	2	2
8	P02608B	M30 FLAT WASHER	2	2
	P02011	M30 LOCK NUT	2	2



SP1136		Crary Fan	
Ref. No.	Part No.	Description	
1	P11522	MOTOR MOUNT	
2	P11523	REAR FAN COWLING	
3	P11524	IMPELLER	
4	P11525	BOLT 10-24x1"	
5	P11526	FRONT FAN COWLING	
6	P11527	FAN SPEED SENSOR MOUNTING BRACKET	
7	P11528	SCREEN	
8	P11529	M6x20 SELF TAP BOLT	
9	P11530	MAGNET MOUNT	
10	P07981	M6 LOCK NUT	
11	P11531	BUTTERFLY CONTROL ARM	
12	P11532	BUTTERFLY	
13	P11533	NUT 10-24	
14	P10293	M6x20 BOLT	

FREEFLOW 2000 - FRONT 20" OTICO ROLL



DRAWN  
02/05/00  
OPERATED

PART NUMBER

FROM SERIAL NO. TO SERIAL NO.

ISSUES

DRAWING NO.  
SP0726

SP0726		4+4.5m Front 20" Otico Roll		
Ref. No.	Part No.	Description	Qty.	
1	P05030	M12x55 SOCKET SCREW	8	
2	P09619	TYRE RETAINING RING	2	
3	P07860	OTICO TYRE - STEEL BANDED	-	
4	-	ROLL	1	

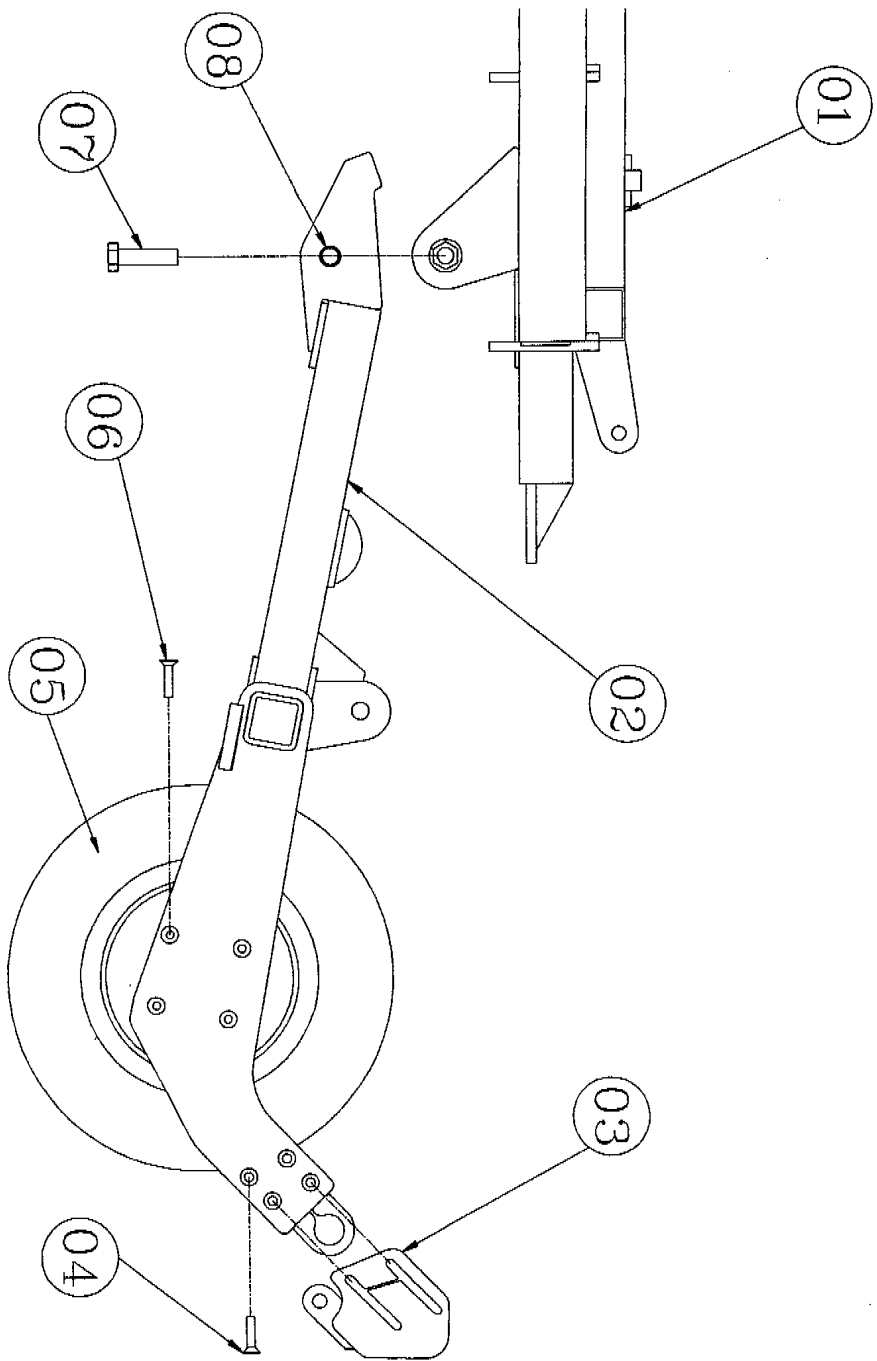
	TYRE QTY.	ROLL PART No.
4m FOLDING FREEFLOW	8	P9618
4.5m FOLDING FREEFLOW	9	P9708



SP0445

4+4.5m F/W Wing Roll

Ref. No.	Part No.	Description	Qty.
1	-	4+4.5m WING	-
2	P09634	4m WING AXLE R/H	1
	P09634	4m WING AXLE L/H	1
	P09643	4.5m WING AXLE R/H	1
	P09744	4.5m WING AXLE L/H	1
3	-	SCRAPER RAIL - SEE <i>WIRE ROPE ASSEMBLY</i> FOR PART NUMBERS	-
6	P05030	M12x55 CSK BOLT	64
	P02004	M12 FLAT WASHER	64
	P02007	M12 LOCK NUT	64
5	-	WING ROLL	-
6	P05030	M12x55 CSK BOLT	64
	P02004	M12 FLAT WASHER	64
	P02007	M12 LOCK NUT	64
7	P04025	M24x90 BOLT	8
	P02604	M24 FLAT WASHER	8
	P02010	M24 LOCK NUT	8
8	P07916	SPRUNG BUSH	8
N/I	P04204	SCJ 50 BEARING	2
	P04202	CASTING	2



4-4.5M F/W FREEFLOW 2000 - WING ROLL ASSEMBLY

DRAWN  
19/12/00

PART NUMBER

PROD SERIAL NO.

TO SERIAL NO.

ISSUE

DRAWING NO.  
SP0445

FREEFLOW WIRE ROPE SCRAPERS

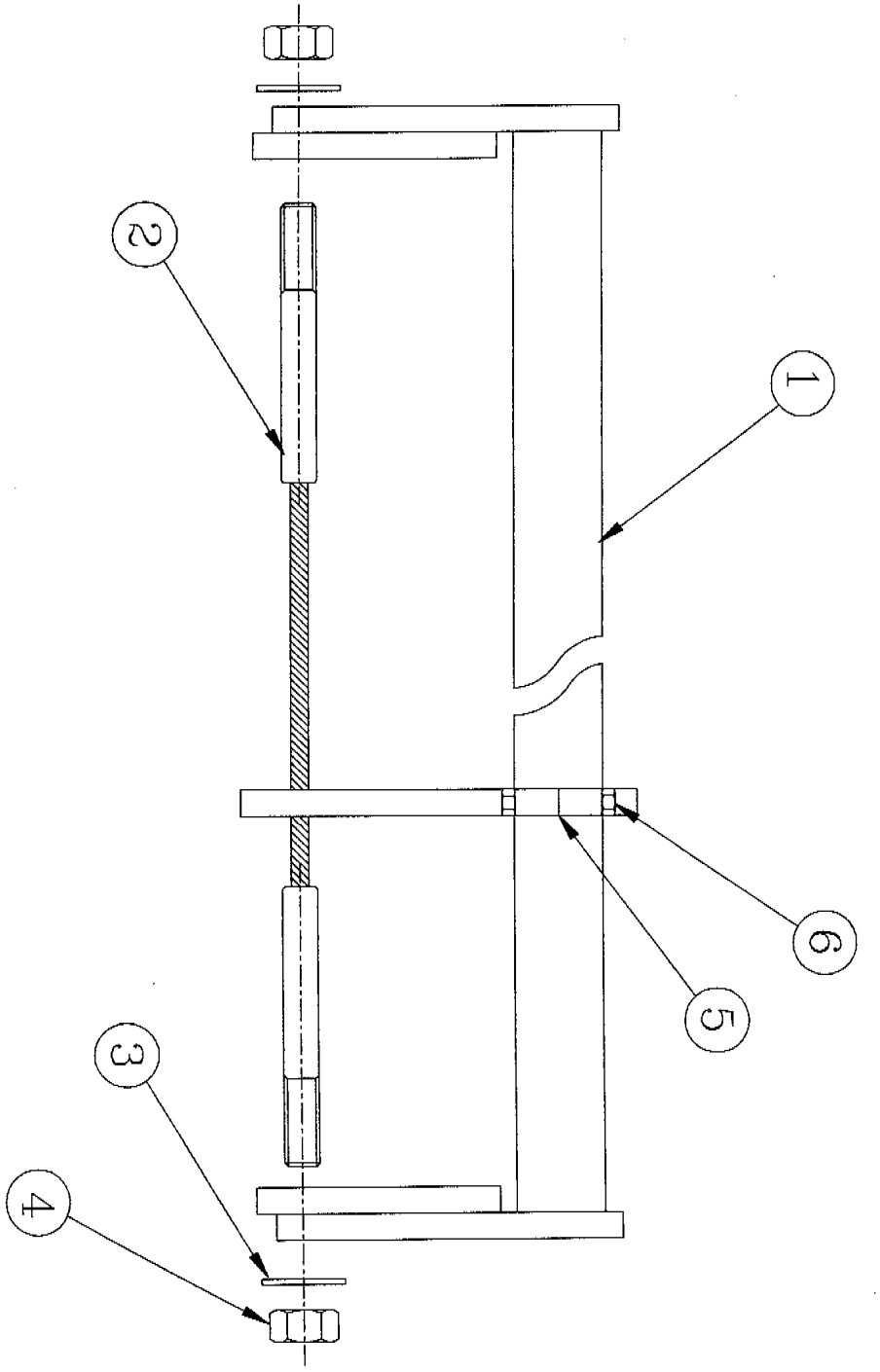
DRAWN  
20/03/08  
UPDATED

PART NUMBER

FROM SERIAL NO. TO SERIAL NO.

ISSUE

DRAWING NO.  
SP1157



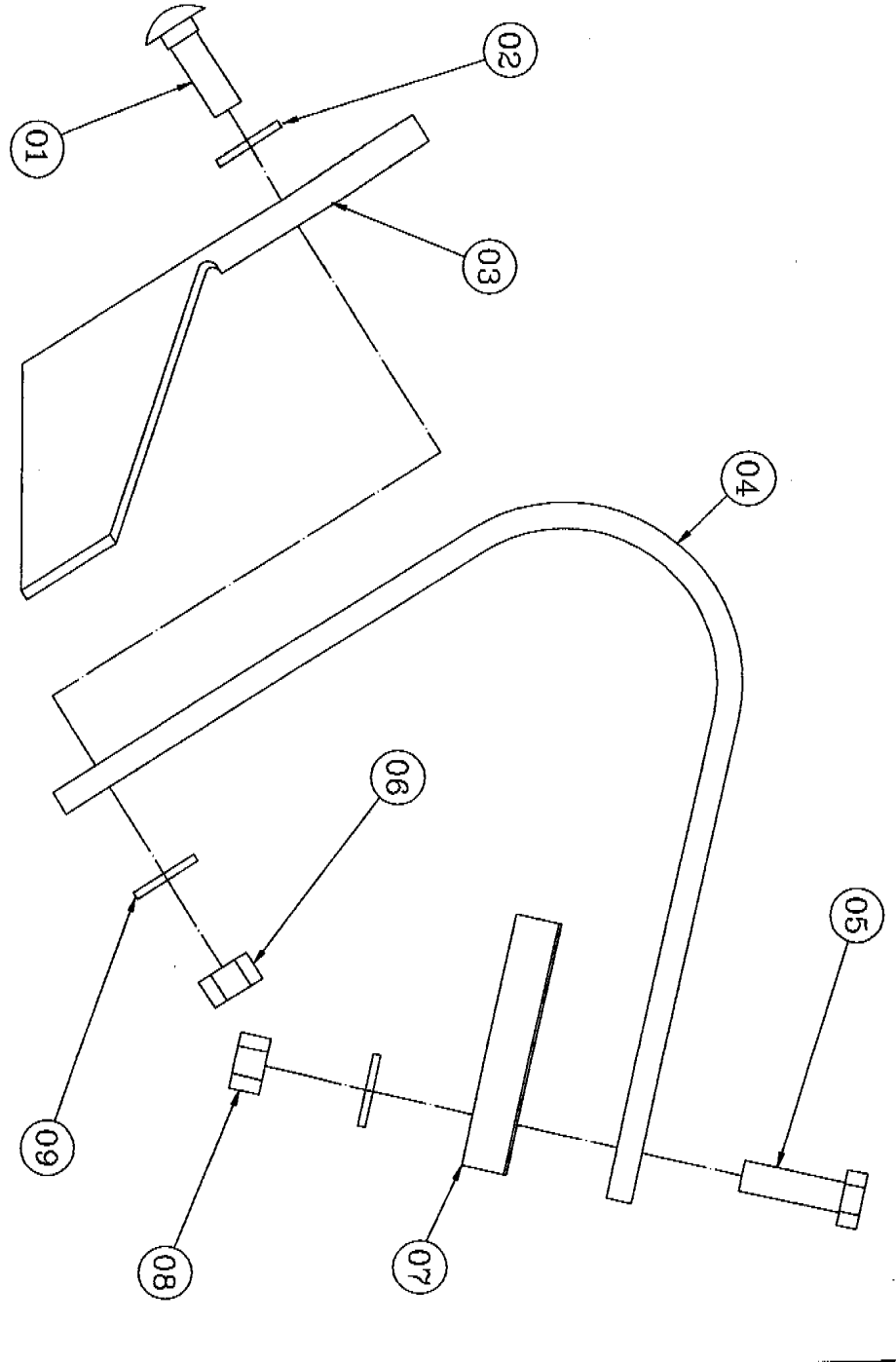
SP1157

4+4.5m F/W Wire Rope Scrapers



Ref. No.	Part No.	Description	4M Qty.	4.5M Qty.
1	P10641	FRONT SCRAPER RAIL	2	-
	P10642	FRONT SCRAPER RAIL	-	2
	P10703	CENTRE SCRAPER RAIL	1	1
	P10704	WING SCRAPER RAIL	2	-
	P10705	WING SCRAPER RAIL	-	2
2	P10445	WIRE ROPE - FRONT	2	-
	P10448	WIRE ROPE - FRONT	-	2
	P10446	CENTRE WIRE ROPE - REAR	1	1
	P10447	WING WIRE ROPE - REAR	2	-
	P10449	WING WIRE ROPE - REAR	-	2
3	P02603B	M20 FLAT WASHER	10	10
4	P02009	M20 LOCK NUT	10	10
5	P10711	FRONT WIRE ROPE SUPPORT	2	2
	P10712	REAR WIRE ROPE SUPPORT	2	2
6	P04754	M8x60 BOLT	8	8
	P04753	M8 LOCK NUT	8	8

FREEFLOW SPRUNG LEAF COVERER ASSEMBLY



DRAWN  
1/4/98  
UPDATED

PART NUMBER

FROM SERIAL NO. TO SERIAL NO.

ISSUE

DRAWING NO.

SP0509

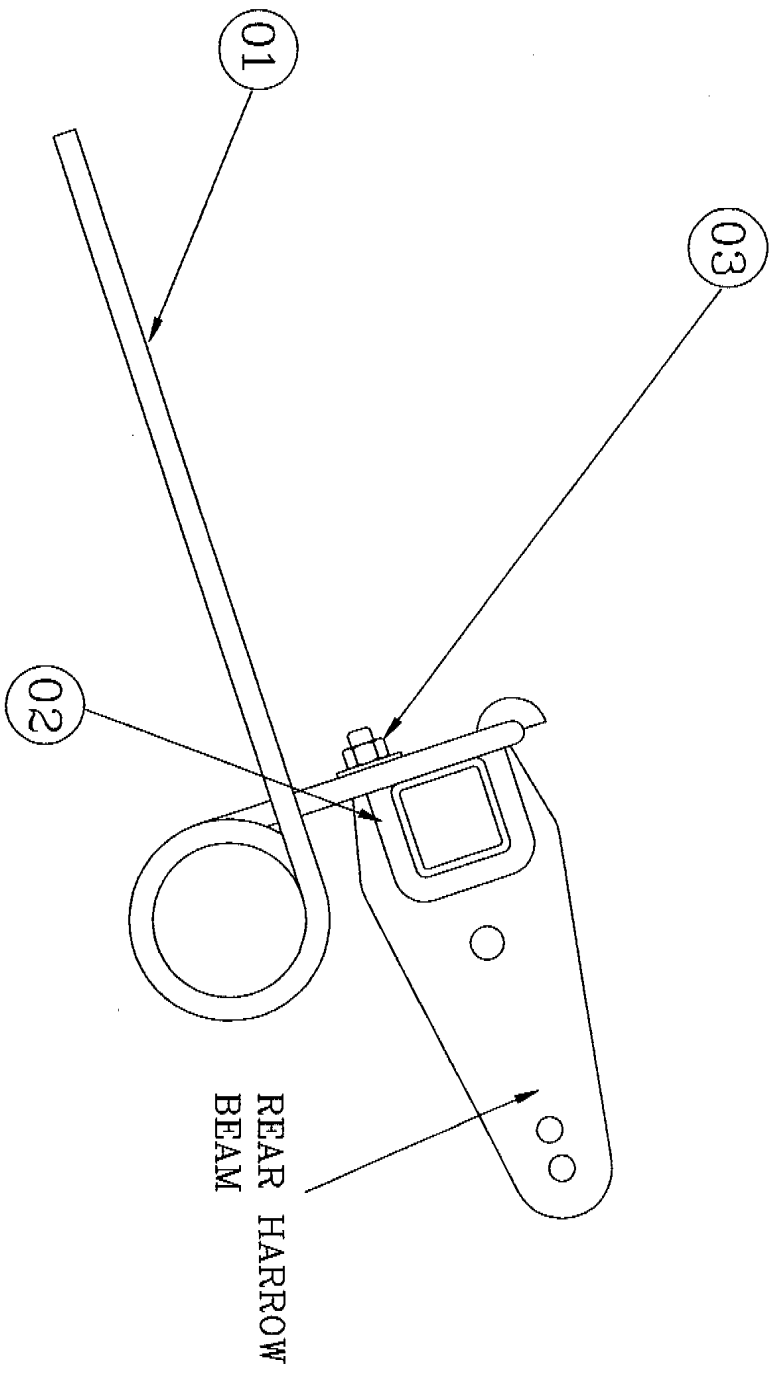
SP0509		Sprung Leaf Coverer Assembly (P08896)		<b>SIMBA</b>
Ref. No.	Part No.	Description	Qty. per unit	
1	P01737	M12x30 DOME BOLT	1	
2	P02602	M16 FLAT WASHER	1	
3	P08410	COVERER POINT	1	
4	P08409	SPRUNG LEAF	1	
5	P00003	M12x40 BOLT	1	
6	P02004	M12 PLAIN NUT	1	
7	P08435	MOUNTING	1	
8	P02007	M12 LOCK NUT	1	
9	P04179	M12 FLAT WASHER	2	

**Unit quantity per machine**

4m Freeflow	8
4.5m Freeflow	8



REAR HARROW WEEDER TINE ARRANGEMENT




DATE  
24/09/02  
DRAWN  
(UPDATED)

PART NUMBER

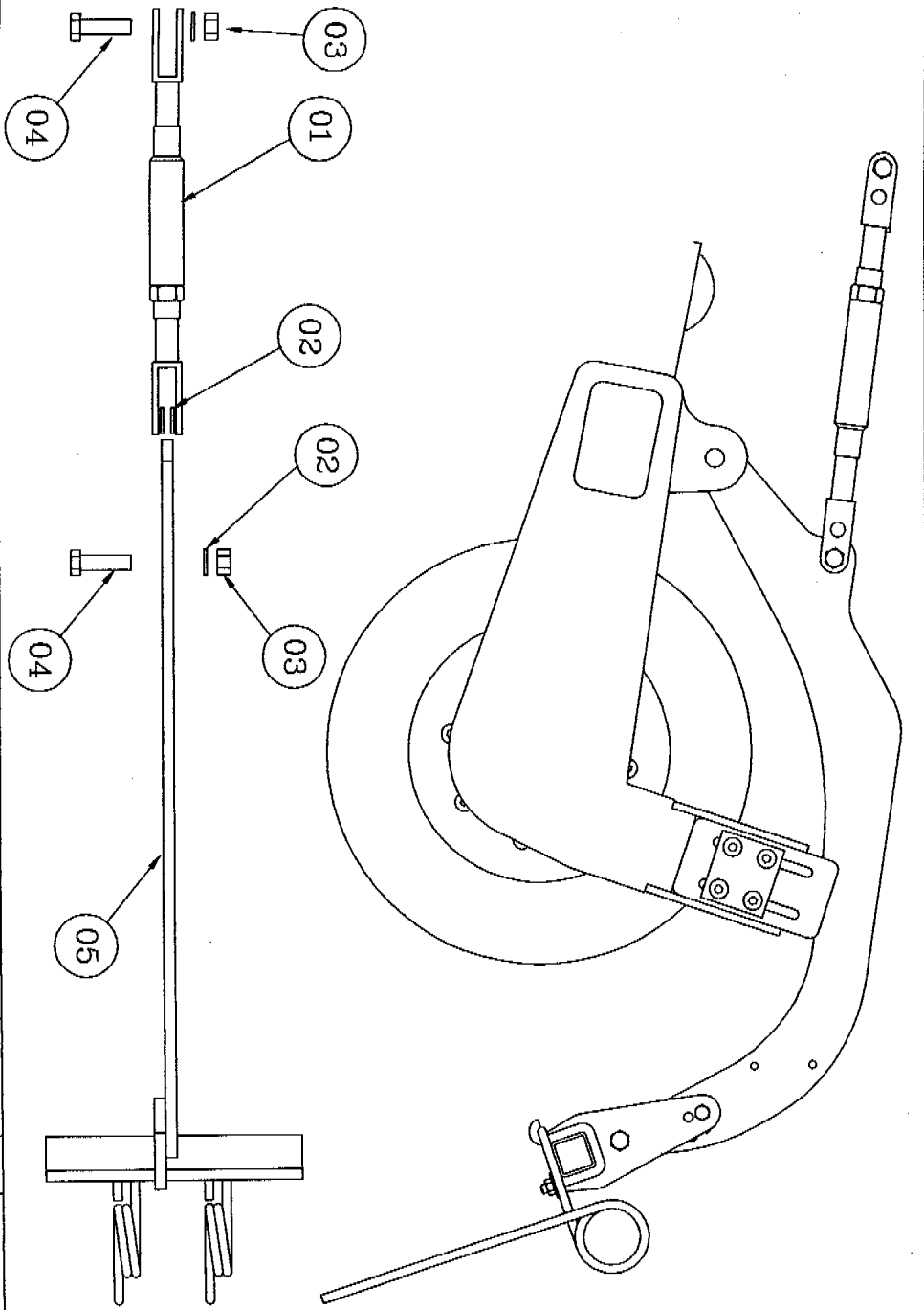
FROM SERIAL NO. TO SERIAL NO.  
7070

ISSUE

DRAWING NO.  
SP0133

SP0133		Weeder Tine Assembly		
Ref. No.	Part No.	Description	M/C Qty. 4m	M/C Qty. 4.5m
1	P01705	REAR WEEDER	32	32
2	P03923	M12 U BOLT COMPLETE WITH WASHER	32	32
3	P02007	M12 LOCK NUT	32	32

FREEFLOW - REAR HARROW TOPLINK MTG




UPDATED  
06/03/02

FROM SERIAL NO.

TO SERIAL NO.

ISSUE

DRAWING NO.  
SP0162

SP0162		Rear Harrow Toplink Mounting	
Ref. No.	Part No.	Description	Unit Qty.
1	P01845	CAT 1 TOPLINK	1
2	P02603	M20 WASHER	4
3	P02009	M20 LOCK NUT	2
4	P00874	M20x70 BOLT	2
5	P06836	REAR HARROW ARM	1

Units per machine = 4

FREEFLOW BOUTMARKER DISC ARM

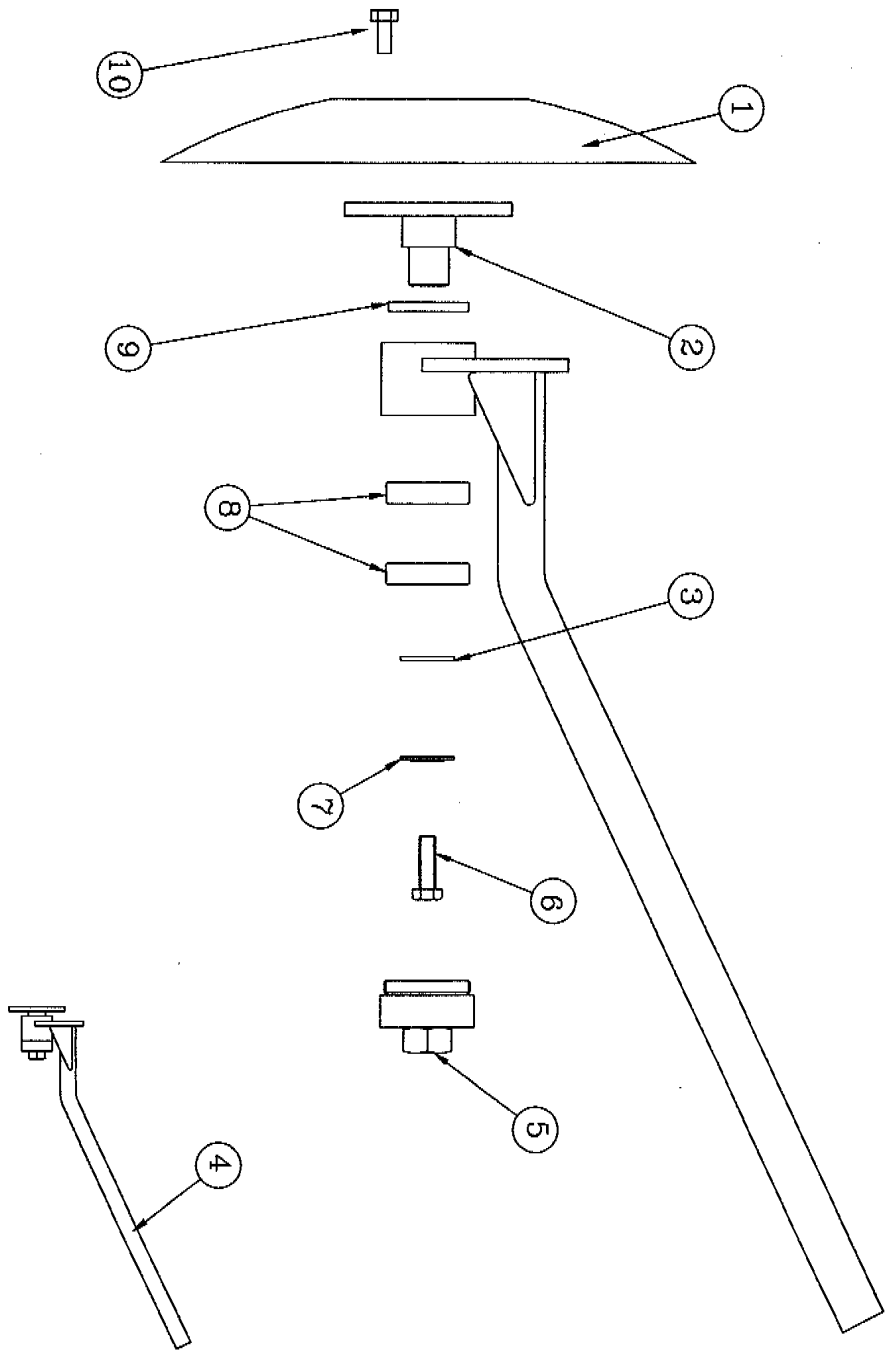
UPDATED  
28/07/00

FROM SERIAL NO.

TO SERIAL NO.

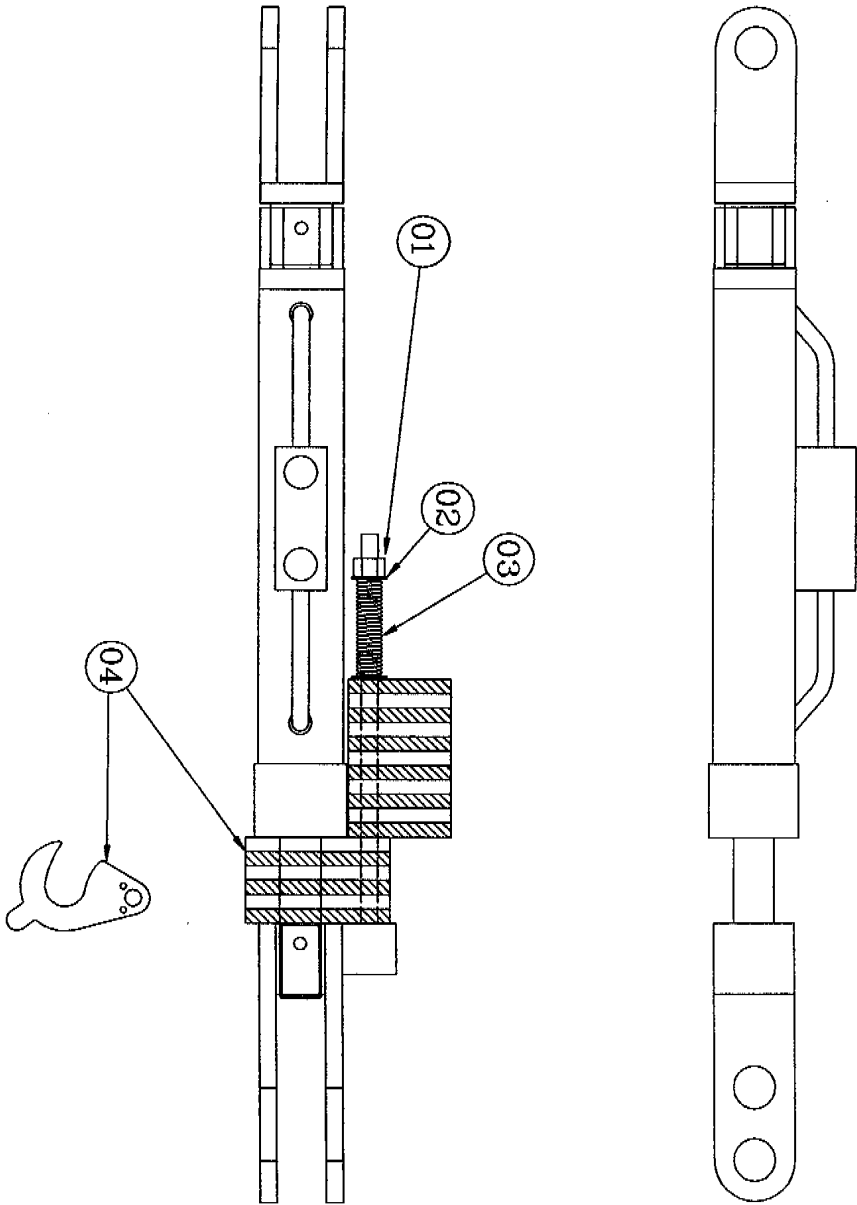
ISSUE


DRAWING NO.  
SP0177



SP0177		4+4.5m Freeflow Boutmarker Arm		<b>SIMBA</b>	
Ref. No.	Part No.	Description	Qty.		
1	P05452	Marker disc	1		
2	P06468	Hub spindle	1		
3	P02601	M12 flat washer	1		
4	P05356	Disc arm Complete (Not inc. Disc)	1		
5	P06469	Hub cap	1		
6	P06471	M12 set screw	1		
7	P06472	Belleville washer	1		
8	P06845	Bearing	2		
9	P06470	Seal	1		
10	P06651	M10 Disc bolt	4		

HYDRAULIC DEPTH ADJUSTER



SP1159		Hydraulic Depth Adjuster		
Ref. No.	Part No.	Description	Qty.	
1	P05534	M10 NYLOC NUT	1	
2	P02600	M10 FLAT WASHER	1	
3	P08803	SPRING	1	
4	P08775	YELLOW SHIM	8	
	P08776	BLACK SHIM	9	

DRAWN  
10/24/02  
UPDATED

PART NUMBER  
P8136

FROM SERIAL NO. TO SERIAL NO. ISSUE

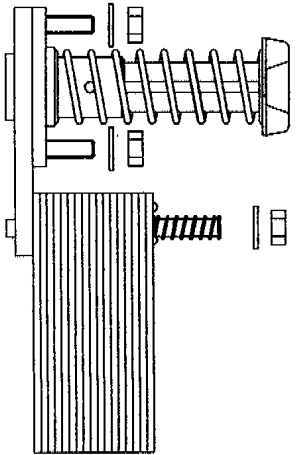
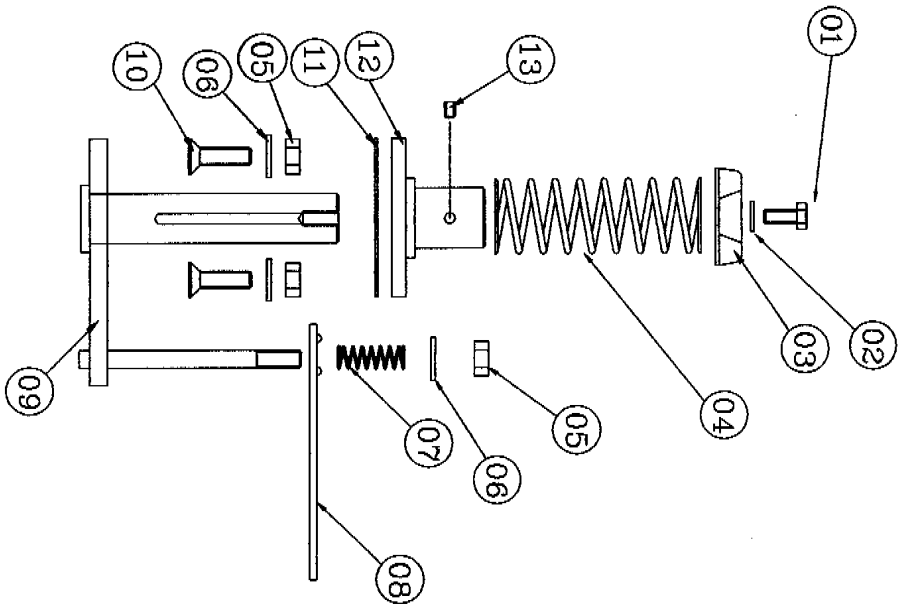
DRAWING NO.  
SP1159



### Rear Depth Control Bolt Assembly

SP0597

Ref. No.	Part No.	Description	Qty.
1	P02789	M8x20 BOLT	1
2	P08817	M8 SPRING WASHER	1
3	P08689	RUBBER PAD	1
4	P08688	SPRING	1
5	P05534	M10 LOCK NUT	3
6	P02600	M10 FLAT WASHER	3
7	P08803	SPRING	1
8	P08679	SHIM - YELLOW	8
	P08680	SHIM - BLACK	9
9	P08686	SHIM CARRIER	1
10	P08816	M10x35 CSK BOLT	2
11	P08807	PACKING SHIM	1
12	P08687	MOUNTING UNIT	1
13	P08818	M6x8 GRUBSCREW	1



FREEFLOW REAR DEPTH CONTROL BOLT ASSY.

DESIGN  
11/3/99  
UPDATED

PART NUMBER

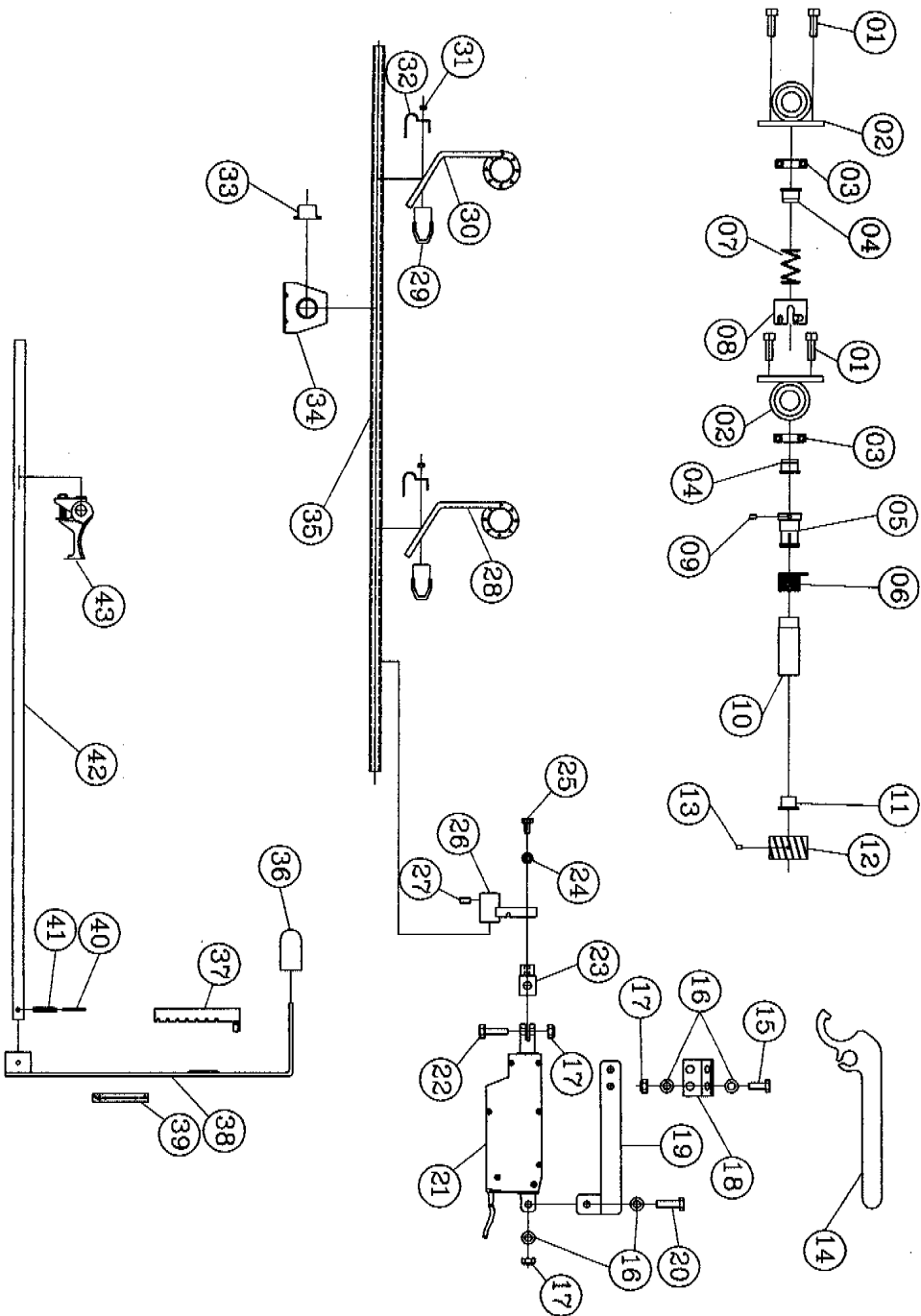
FROM SERIAL NO.

TO SERIAL NO.

ISSUE

DRAWING NO.  
SP0579

4+4.5m Folding Wing Freeflow Tramlining Parts



DRAWN  
12/05/02  
OPERATED

PART NUMBER

FROM SERIAL NO. TO SERIAL NO.

ISSUE

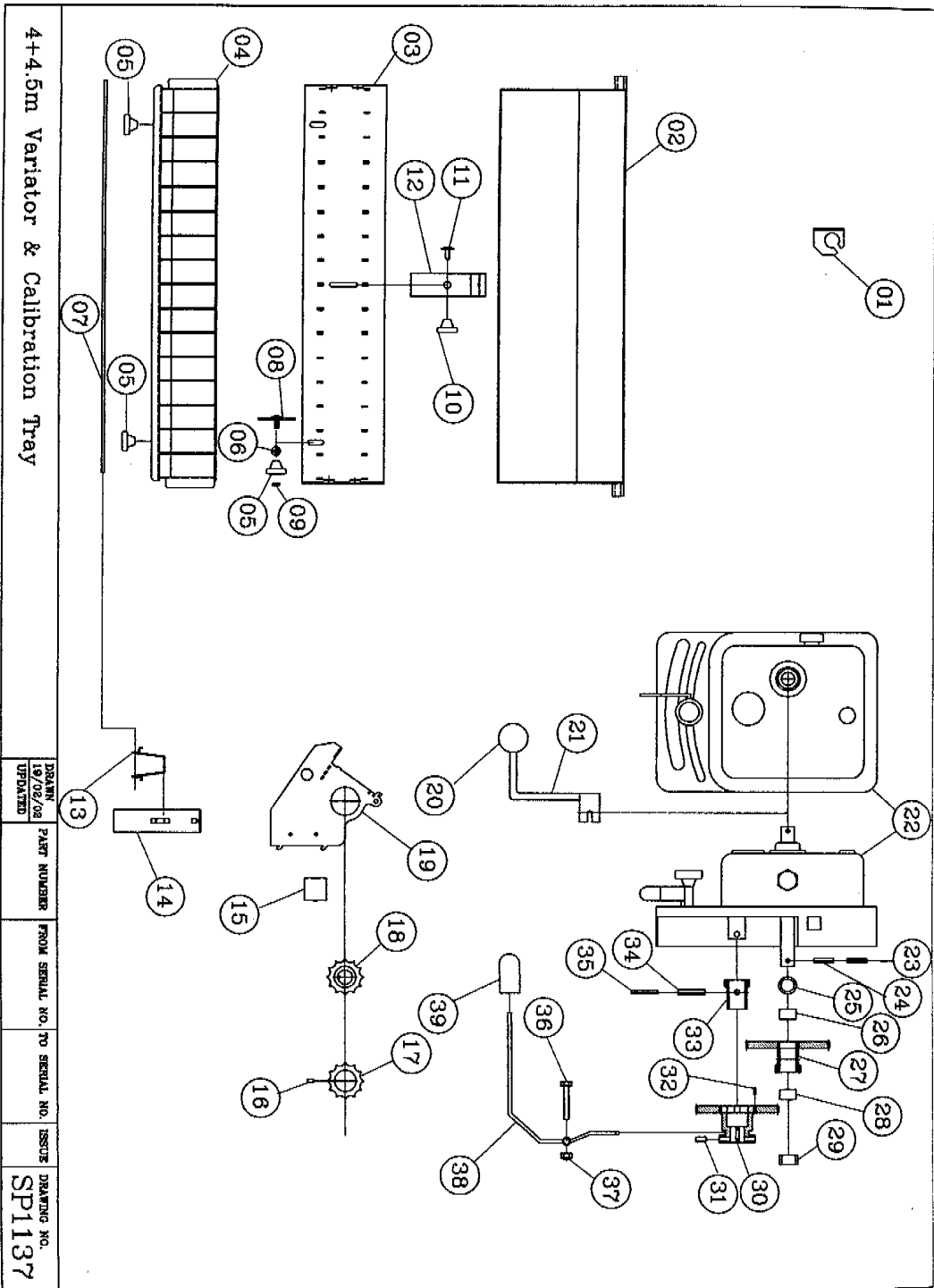
DRAWING NO.  
SP1140

SP1140

4+4.5m Tramlining Parts



Ref. No.	Part No.	Description
1	P06403	BOLT M10x20
2	P11309	BEARING HOUSING
3	P08349	BEARING
4	P11310	BEARING SLEEVE
5	P08780	TRAMLINE SPRING SLEEVE
6	P11311	TRAMLINE SPRING
7	P07715	TRAMLINE SPRING
8	P11312	HALF WIDTH DRIVE COLLAR
9	P09513	GRUB SCREW M6x10
10	P11313	TRAMLINE ROLLER SLEEVE
11	P08574	TRAMLINE ROLLER SLEEVE INTERNAL COLLAR
12	P08616	TRAMLINE FEED ROLLER
13	-	GRUB SCREW (PART OF P08616)
14	P11314	SPANNER
15	P11436	BOLT M14x25
16	P02600	M10 WASHER
17	P05534	M10 NUT
18	P11315	HOPPER MOUNTING BRACKET
19	P11316	LINEAR ACTUATOR BRACKET
20	P00003	BOLT M12x40
21	P07961	LINEAR ACTUATOR
22	P11437	BOLT M10x35
23	P11317	LINEAR ACTUATOR BRACKET ADAPTOR
24	P05535	M8 WASHER
25	P11438	BOLT M8x16
26	P09052	BRACKET
27	P09153	SCREW
28	P11318	TRAMLINE CONTROL LEVER
29	P11330	TRAMLINE CONTROL LEVER RETAINING CLIP
30	P11318	TRAMLINE CONTROL LEVER
31	P11439	M5 NUT
32	P11331	TRAMLINE CONTROL LEVER RETAINING CLIP
33	P11440	PLAIN BEARING
34	P11441	ACTUATOR ROD SUPPORT
35	P11319	KEYED DRIVE SHAFT
36	P11320	ADJUSTER LEVER KNOB
37	P11321	METERING FLAP POSITIONER
38	P11322	ADJUSTER LEVER
39	P11323	1-7 STICKER
40	P11443	ROLL PIN 3.5x35
41	P11442	ROLL PIN 6x35
42	P11324	METERING SHAFT
43	P11325	METERING ROLLER FLAP



4+4.5m Variator & Calibration Tray

DRAWN 19/02/08 UPDATED	PART NUMBER	FROM SERIAL NO.	TO SERIAL NO.	ISSUE	DRAWING NO. <b>SP1137</b>
------------------------------	-------------	-----------------	---------------	-------	------------------------------

SP1137		4+4.5m Calibration	
Ref. No.	Part No.	Description	
1	P11326	CALIBRATION TRAY HANGER L/H	
	P11327	CALIBRATION TRAY HANGER R/H	
2	P08343	CALIBRATION TRAY	
3	P11328	FACE PLATE	
4	P08345	AIR DRAWER	
5	P11329	KNOB	
6	P05400	M6 WASHER	
7	P11333	FOAM SEAL	
8	P11332	AIR DRAWER LOCK PLATE	
9	P07981	M6 NUT	
10	P11329	KNOB	
11	P11433	M6x16 BOLT	
12	P11334	CALIBRATION TRAY LOCK	
13	P08351	SPRING	
14	P08350	SHUT OFF SLIDE	
15	P11335	DIVIDER SPACER	
16	-	GRUB SCREW (PART OF P08616)	
17	P08616	TRAMLINE FEED ROLLER	
18	P08870	KEYED FEED ROLLER	
19	P11336	DIVIDER	
20*	P11337	CALIBRATION HANDLE KNOB	
21*	P07198	CALIBRATION HANDLE	
22*	P09962	VARIATOR	
23	P08877	ROLL PIN 6x30	
24	P11340	ROLL PIN 8x30	
25	P11341	SPACER	
26	P11342	SPACER	
27	P11343	LAY SHAFT PINION	
28	P11342	SPACER	
29	P11345	SPACER	
30	P11346	HI/LO SELECTOR PINION	
31	P11347	DÉTENTE ADJUSTER	
32	P11348	ROLL PIN 3x15	
33	P11349	DRIVE COLLAR	
34	P11344	ROLL PIN 8x40	
35	P11432	ROLL PIN 6x40	
36	P03482	M8x50 BOLT	
37	P05213	M8 NUT	
38	P11434	HI/LO SELECTOR HANDLE	
39	P11435	HI/LO SELECTOR HANDLE KNOB	

\* NOTE:- On Electric Drive models a gearbox (P11647) replaces these parts.

