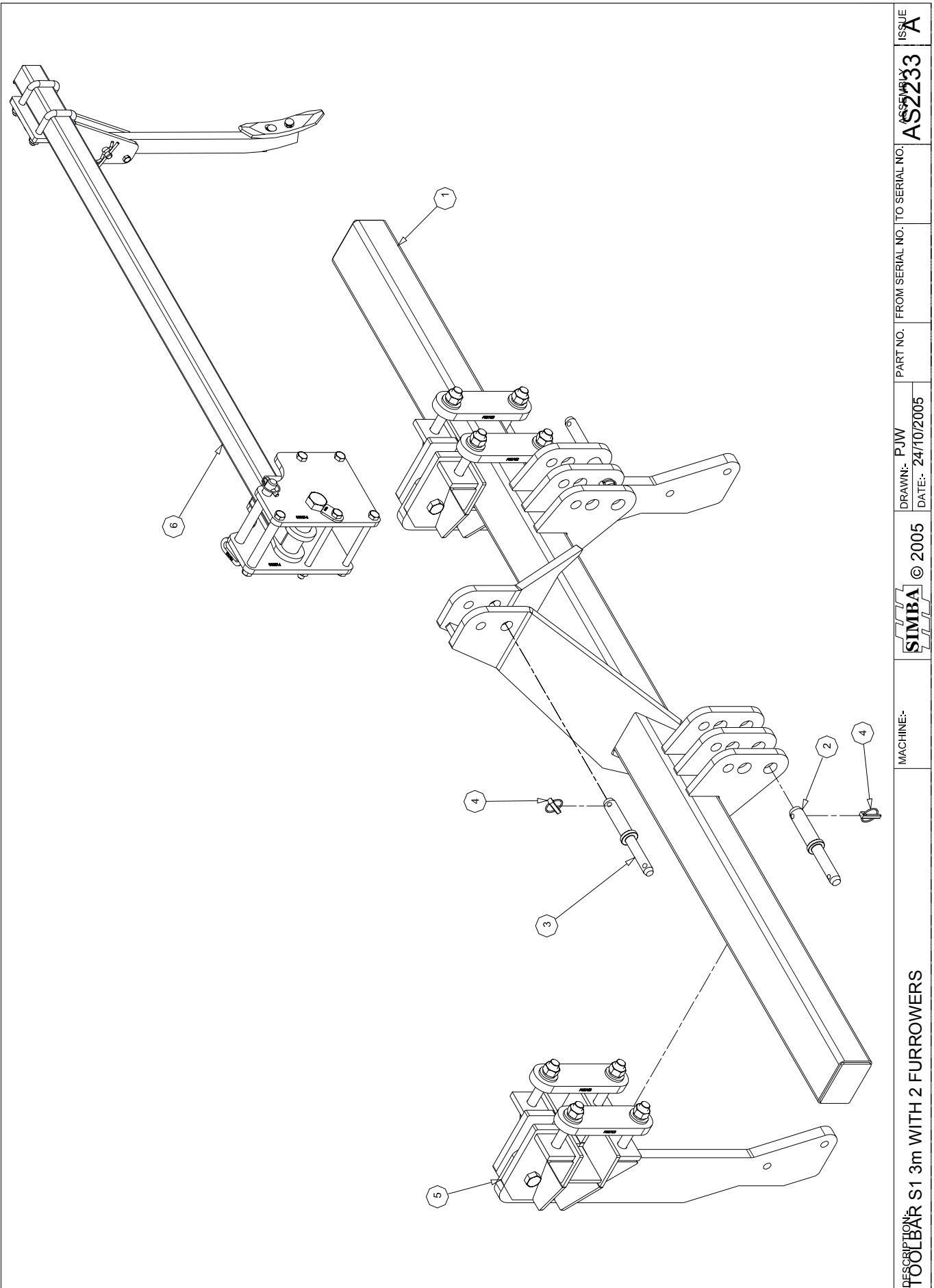



5. Parts & Assembly

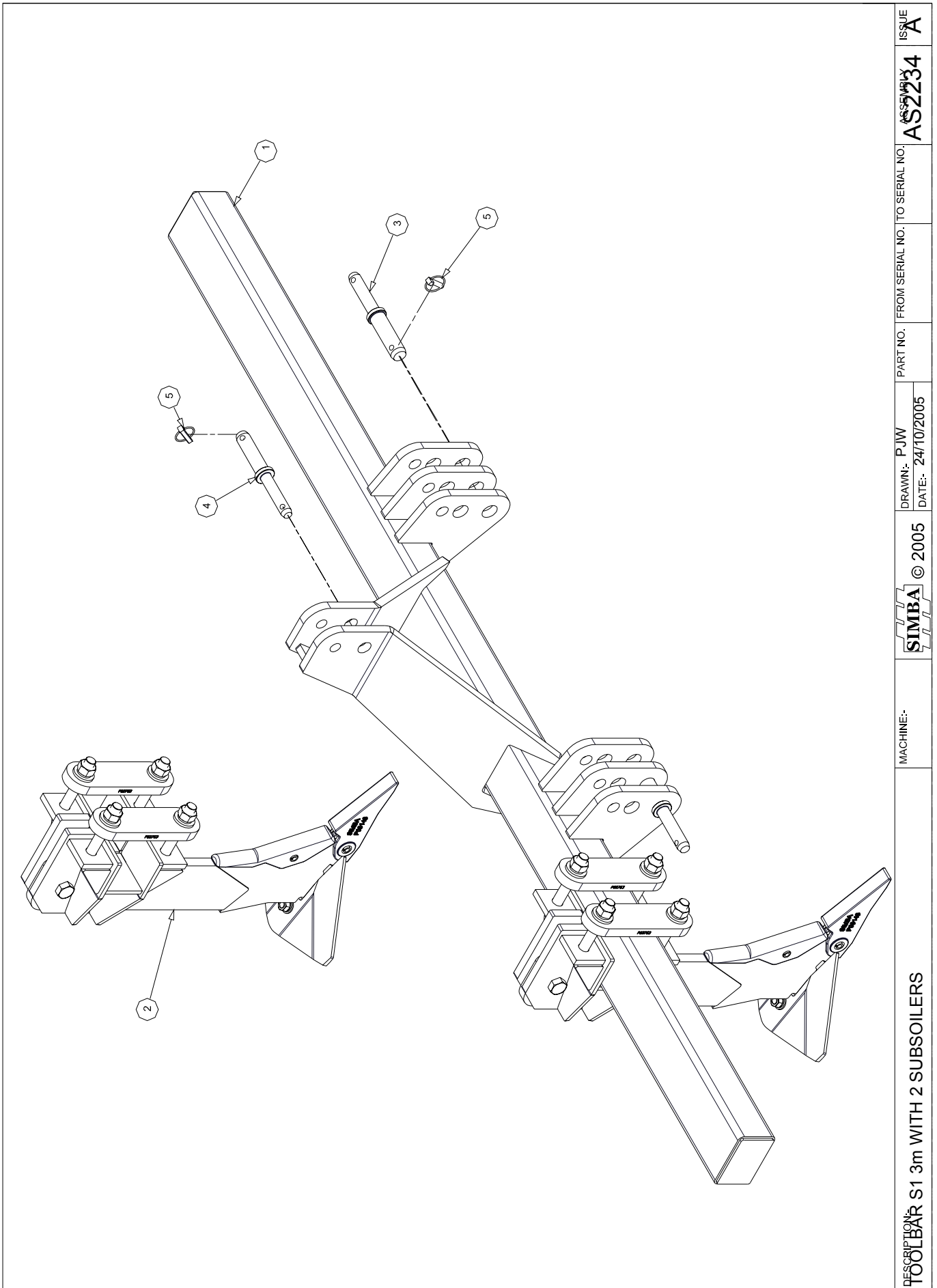
Table of contents

Toolbar 3.0m with 2 Furrowers	18
Toolbar 3.0m with 2 Subsoilers	20
Toolbar 4.6m with 3 Furrowers	22
Marker Assembly	24
Furrower Assembly	26
Subsoiler Assembly	30



ISSUE	ASZZ33	FROM SERIAL NO. TO SERIAL NO.	PART NO.	DRAWN: PJW	DATE: 24/10/2005	© 2005	SIMBA	MACHINE-	DESCRIPTION: TOOLBAR S1 3m WITH 2 FURROWERS
-------	--------	-------------------------------	----------	------------	------------------	--------	-------	----------	--

AS2233		TOOLBAR S1 3m WITH 2 FURROWERS		
ITEM	PART NO	DESCRIPTION	QTY	COMMENTS
1	P13885	TOOLBAR 150x100x3m	1	
2	P13887	PIN - L/LINK S1 T/BAR	2	
3	P13888	PIN - T/LINK S1 T/BAR	1	
4	P02484	LYNCH PIN CAT 2	3	
5	AS2231	FURROWER ASSEMBLY SERIES 1 150x1	2	
6	AS2229	MARKER ASSY S1 150x100	2	
7				
8				
9				
10				
11				
12				
13				
14				
15				
16				
17				
18				
19				
20				
21				
22				
23				
24				
25				
26				
27				
28				
29				
30				
31				
32				
33				
34				
35				
36				
37				
38				
39				
40				
41				
42				
43				
44				
45				
46				
47				
48				
49				
50				



DESCRIPTION:
TOOLBAR S1 3m WITH 2 SUBSOILERS

MACHINE:-




DRAWN:- PJW
DATE:- 24/10/2005

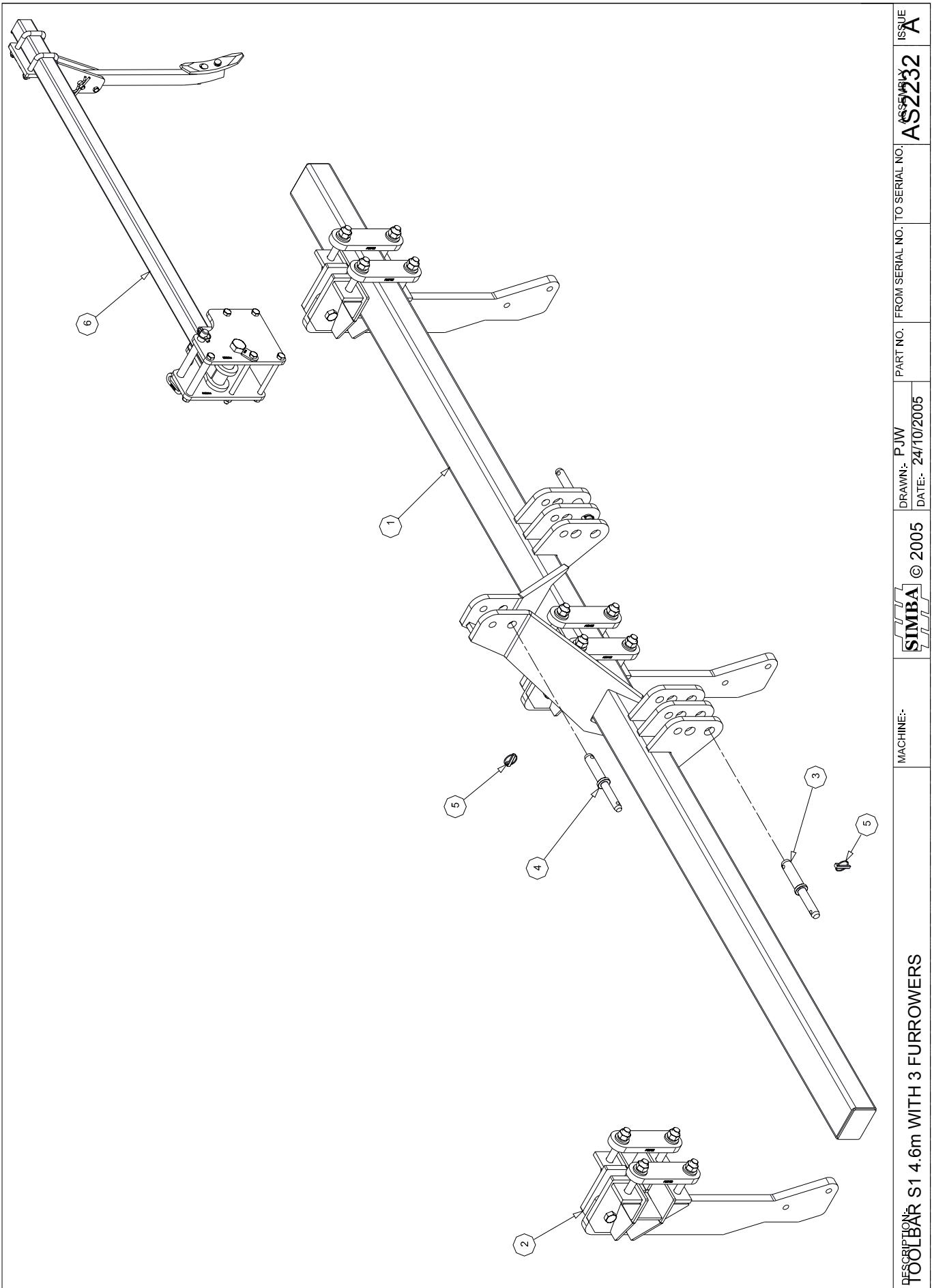
PART NO. FROM SERIAL NO. TO SERIAL NO.

ASSEMBLY
AS2234

ISSUE
A



AS2234		TOOLBAR S1 3m WITH 2 SUBSOILERS		
ITEM	PART NO	DESCRIPTION	QTY	COMMENTS
1	P13885	TOOLBAR 150x100x3m	1	
2	AS2230	SUB SOIL ASSEMBLY SERIES 1 150x100	2	
3	P13887	PIN - L/LINK S1 T/BAR	2	
4	P13888	PIN - T/LINK S1 T/BAR	1	
5	P02484	LYNCH PIN CAT 2	3	
6				
7				
8				
9				
10				
11				
12				
13				
14				
15				
16				
17				
18				
19				
20				
21				
22				
23				
24				
25				
26				
27				
28				
29				
30				
31				
32				
33				
34				
35				
36				
37				
38				
39				
40				
41				
42				
43				
44				
45				
46				
47				
48				
49				
50				



DESCRIPTION:
TOOLBAR S1 4.6m WITH 3 FURROWERS

MACHINE:-




DRAWN:- PJW
DATE:- 24/10/2005

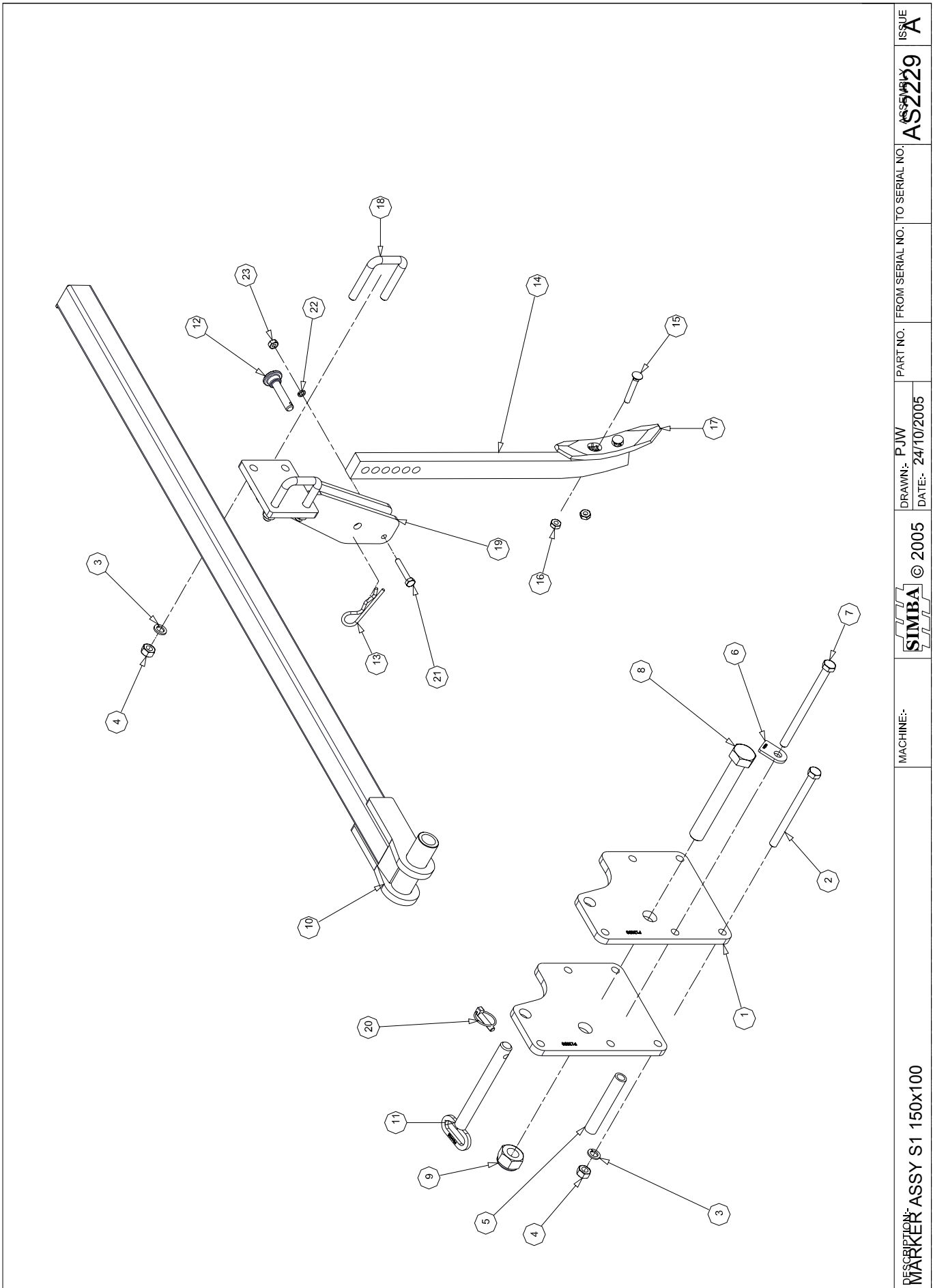
PART NO. FROM SERIAL NO. TO SERIAL NO.

ASSEMBLY
AS2232

ISSUE
A



AS2232		TOOLBAR S1 4.5m WITH 3 FURROWERS		
ITEM	PART NO	DESCRIPTION	QTY	COMMENTS
1	P13886	TOOLBAR 150x100x4.5m	1	
2	AS2231	FURROWER ASSEMBLY SERIES 1 150x1	3	
3	P13887	PIN - L/LINK S1 T/BAR	2	
4	P13888	PIN - T/LINK S1 T/BAR	1	
5	P02484	LYNCH PIN CAT 2	3	
6	AS2229	MARKER ASSY S1 150x100	2	
7				
8				
9				
10				
11				
12				
13				
14				
15				
16				
17				
18				
19				
20				
21				
22				
23				
24				
25				
26				
27				
28				
29				
30				
31				
32				
33				
34				
35				
36				
37				
38				
39				
40				
41				
42				
43				
44				
45				
46				
47				
48				
49				
50				



DESCRIPTION:
MARKER ASSY S1 150x100

MACHINE:-




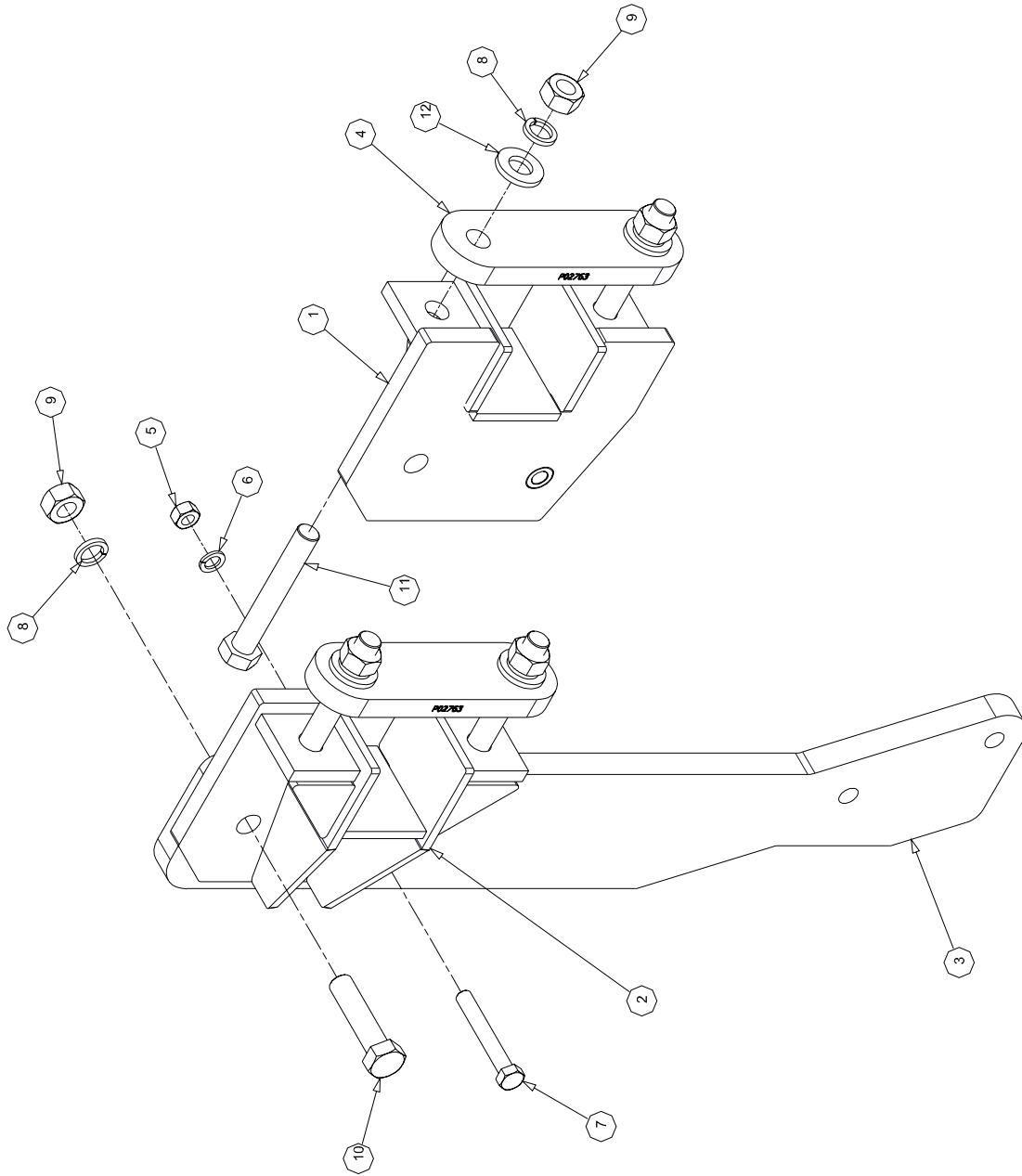
DRAWN: PJW
DATE: 24/10/2005

PART NO. FROM SERIAL NO. TO SERIAL NO.

ASSEMBLY
AS2229

ISSUE
A

AS2229		MARKER ASSY S1 150x100		
ITEM	PART NO	DESCRIPTION	QTY	COMMENTS
1	P13890	MARKER CLAMP S1	2	
2	P01548	BOLT M16x200 GR. 8.8	4	
3	P02038	WASHER SPRING M16	9	
4	P01358	NUT PLAIN M16	9	
5	P13914	BUSH - SPACER	1	
6	P13915	PLATE - ANTIROTATE	1	
7	P00962	BOLT M16x220 GR. 8.8	1	
8	P02793	BOLT M30x220 GR. 8.8	1	
9	P02011	NUT LOCK M30	1	
10	P13889	MARKER ARM	1	
11	P04418	PIN Ø25x230 B TYPE	1	
12	P05207	PIN Ø16x73	1	
13	P02485	R CLIP Ø6x120	1	
14	P05533	TINE - 2"x1" BENT 6 HOLE	1	
15	P03448	BOLT 7/16" UNFx75	2	
16	P07220	UNF 7/16" PLAIN NUT	2	
17	P03017	POINT 1½" REVERSIBLE	1	
18	P01613	BOLT U M16 GR8.8 100x78	2	
19	P13891	MARKER TINE CLAMP	1	
20	P02484	LYNCH PIN CAT 2	1	
21	P09138	BOLT M10x60 GR. 8.8	1	
22	P02035	WASHER SPRING M10	1	
23	P02003	NUT PLAIN M10	1	
24				
25				
26				
27				
28				
29				
30				
31				
32				
33				
34				
35				
36				
37				
38				
39				
40				
41				
42				
43				
44				
45				
46				
47				
48				
49				
50				



DESCRIPTION:
FURROWER ASSEMBLY SERIES 1 150x100

MACHINE:-




© 2005

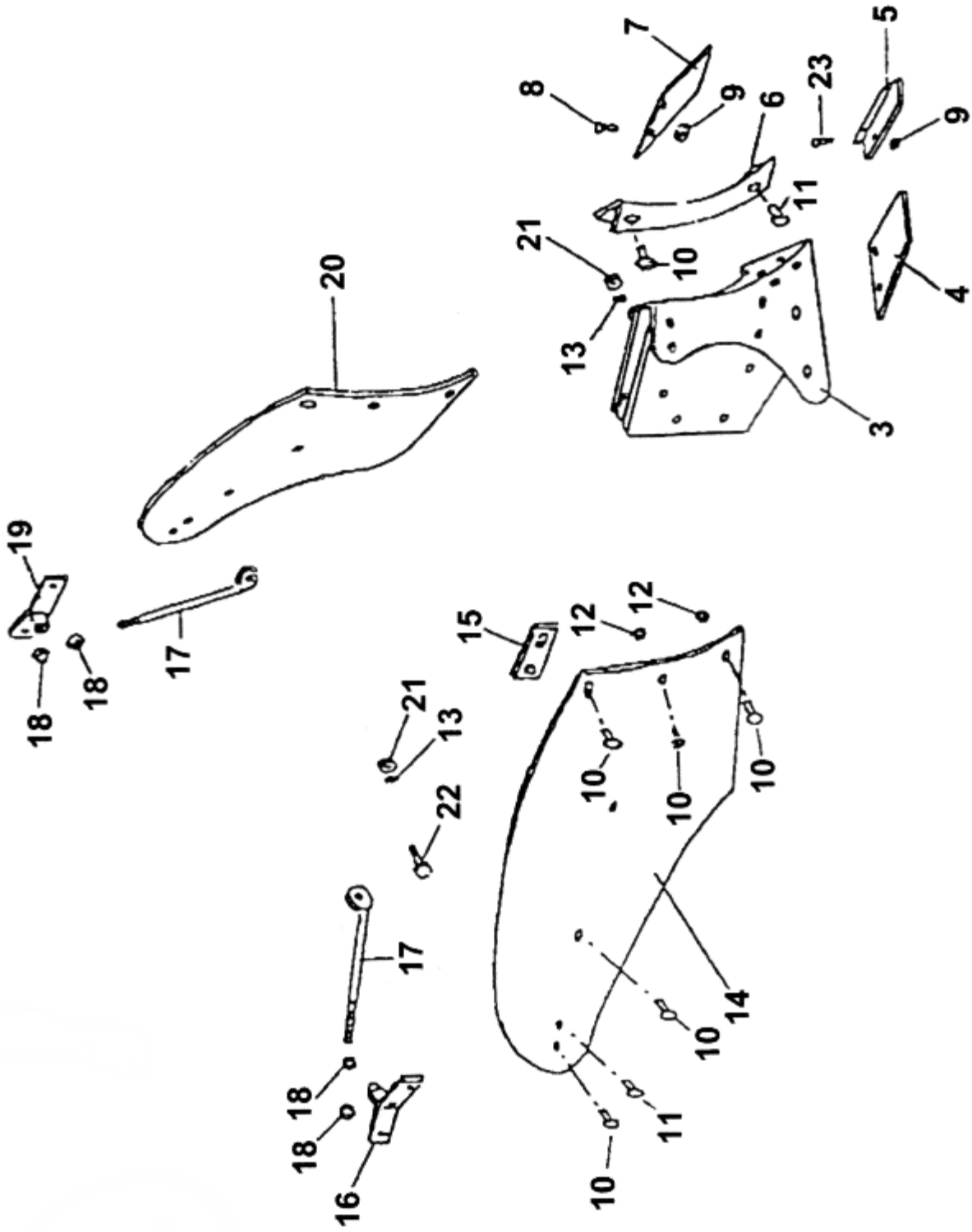
DRAWN: PJW
 DATE: 24/10/2005

PART NO. FROM SERIAL NO. TO SERIAL NO.


ASSEMBLY
AS2231

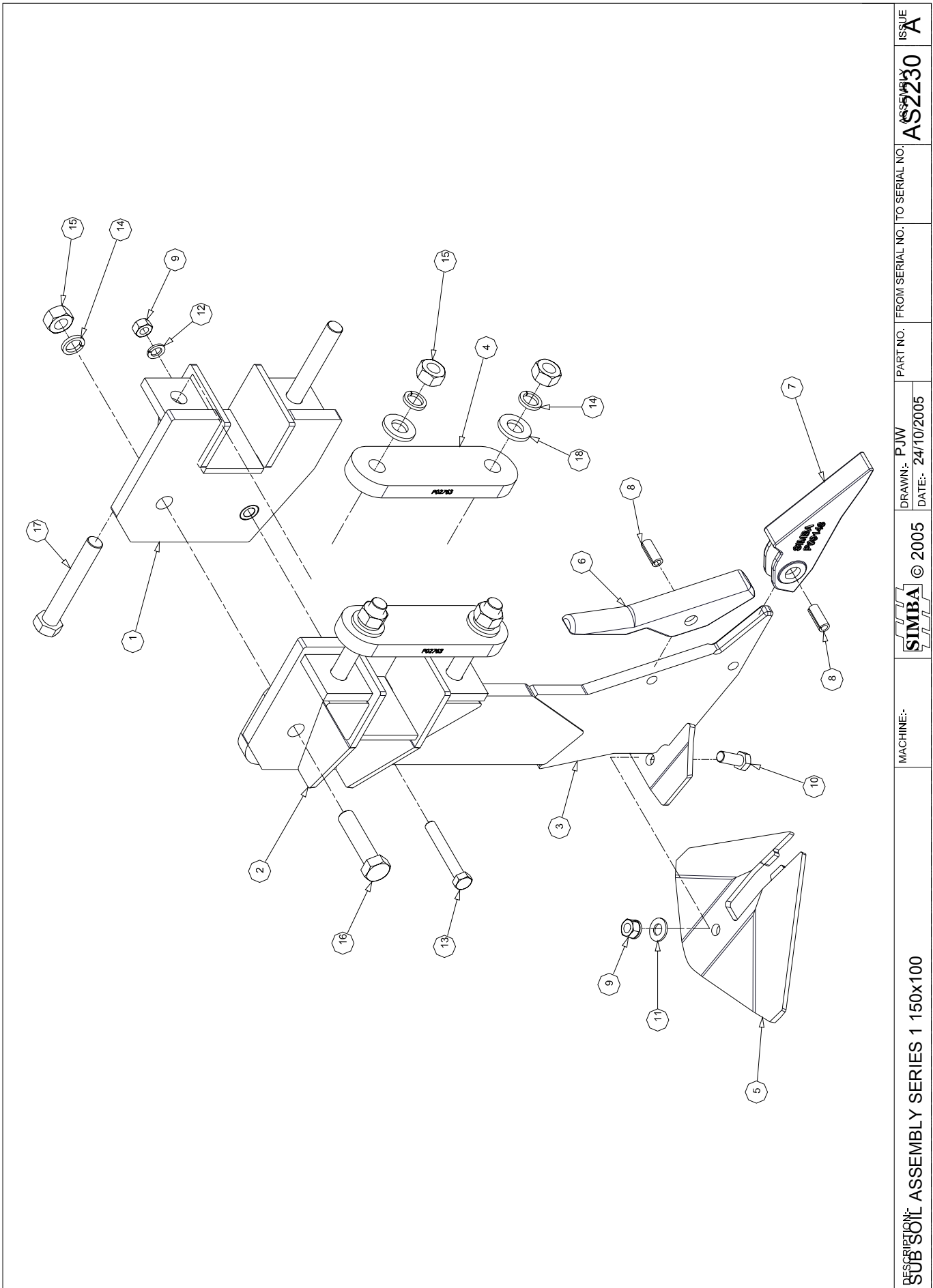
ISSUE
A

AS2231		FURROWER ASSEMBLY SERIES 1 150x100 RHS		
ITEM	PART NO	DESCRIPTION	QTY	COMMENTS
1	P13893	CLAMP - S1 - LH	1	
2	P13894	CLAMP - S1 - RH	1	
3	P06760	TINE - S1 FURROWER	1	
4	P02763	RTG PLATE M24x2/204 CTS	2	
5	P01358	NUT PLAIN M16	1	
6	P02038	WASHER SPRING M16	1	
7	P04718	BOLT M16x110 GR. 8.8	1	
8	P02593	WASHER SPRING M24	5	
9	P00717	NUT PLAIN M24	5	
10	P00017	BOLT M24x100 GR. 8.8	1	
11	P00023	BOLT M24x160 GR. 8.8	4	
12	P02604	WASHER FLAT M24 Ø50	4	
NI	F0014	FURROWER MOULDBOARD ASSY	1	DWS 13
13				
14				
15				
16				
17				
18				
19				
20				
21				
22				
23				
24				
25				
26				
27				
28				
29				
30				
31				
32				
33				
34				
35				
36				
37				
38				
39				
40				
41				
42				
43				
44				
45				
46				
47				
48				
49				
50				



PART NUMBER FURROWER ASSEMBLY	SIMBA © 2004	DRAWN:- 07/12/05	PART NO. FROM SERIAL NO. TO SERIAL NO.	DRAWING NO. AS2379	ISSUE
		UPDATED:-			

AS2379		FURROWER ASSEMBLY		
ITEM	PART NO	DESCRIPTION	QTY	COMMENTS
1	---			
2	---			
3	P07214	FROG ASSEMBLY		
4	P07215	WING R/H		
5	P00841	POINT		
6	P07216	SHIN		
7	P07217	WING L/H		
8	P07218	TAPER HD BOLT		
9	P07225	HEX NUT M12 NYLOC		
10	P07219	CSK HD NIBBED BOLT M12x30		
11	P07226	CSK HD NIBBED BOLT M12x35		
12	P07220	HEX NUT 7/16" UNF		
13	P07227	SPRING WASHER 3/4"		
14	P00847	MOULDBOARD R/H		
15	P07221	STRAP		
16	P07209	STAY BUCKET R/H		
17	P07210	ADJUSTABLE STAY		
18	P07211	HEX LOCK NUT 3/4" UNC		
19	P07212	STAY BUCKET L/H		
20	P00846	MOULDBOARD L/H		
21	P07213	HEX NUT 3/4" UNC		
22	P07222	HEX HEAD BOLT 3/4" UNC x 3 1/4"		
23	P07223	TAPER HEAD BOLT M12x37		
24				
25				
26				
27				
28				
29				
30				
31				
32				
33				
34				
35				
36				
37				
38				
39				
40				
41				
42				
43				
44				
45				
46				
47				
48				
49				
50				



DESCRIPTION: ASSEMBLY SERIES 1 150x100
SUB SOIL

MACHINE:-




DRAWN: PJW
DATE: 24/10/2005

PART NO. FROM SERIAL NO. TO SERIAL NO.

ASSEMBLY AS2230

ISSUE A

AS2230		SUBSOIL ASSEMBLY S1 150x100		
ITEM	PART NO	DESCRIPTION	QTY	COMMENTS
1	P13893	CLAMP - S1 - LH	1	
2	P13894	CLAMP - S1 - RH	1	
3	P13892	TINE - S1 SUBSOIL	1	
4	P02763	RTG PLATE M24x2/204 CTS	2	
5	P10411	WING - PROLIFT 350mm	1	
6	P10391	WEARSHIN NON REVERSIBLE	1	
7	P09148	POINT - PROLIFT CrFe	1	
8	P02481	ROLL PIN Ø16x40	2	
9	P01358	NUT PLAIN M16	2	
10	P00007	BOLT M16x40 GR. 8.8	1	
11	P02602	WASHER FLAT M16	1	
12	P02038	WASHER SPRING M16	2	
13	P04718	BOLT M16x110 GR. 8.8	1	
14	P02593	WASHER SPRING M24	5	
15	P00717	NUT PLAIN M24	5	
16	P00017	BOLT M24x100 GR. 8.8	1	
17	P00023	BOLT M24x160 GR. 8.8	4	
18	P02604	WASHER FLAT M24 Ø50	4	
19				
20				
21				
22				
23				
24				
25				
26				
27				
28				
29				
30				
31				
32				
33				
34				
35				
36				
37				
38				
39				
40				
41				
42				
43				
44				
45				
46				
47				
48				
49				
50				

